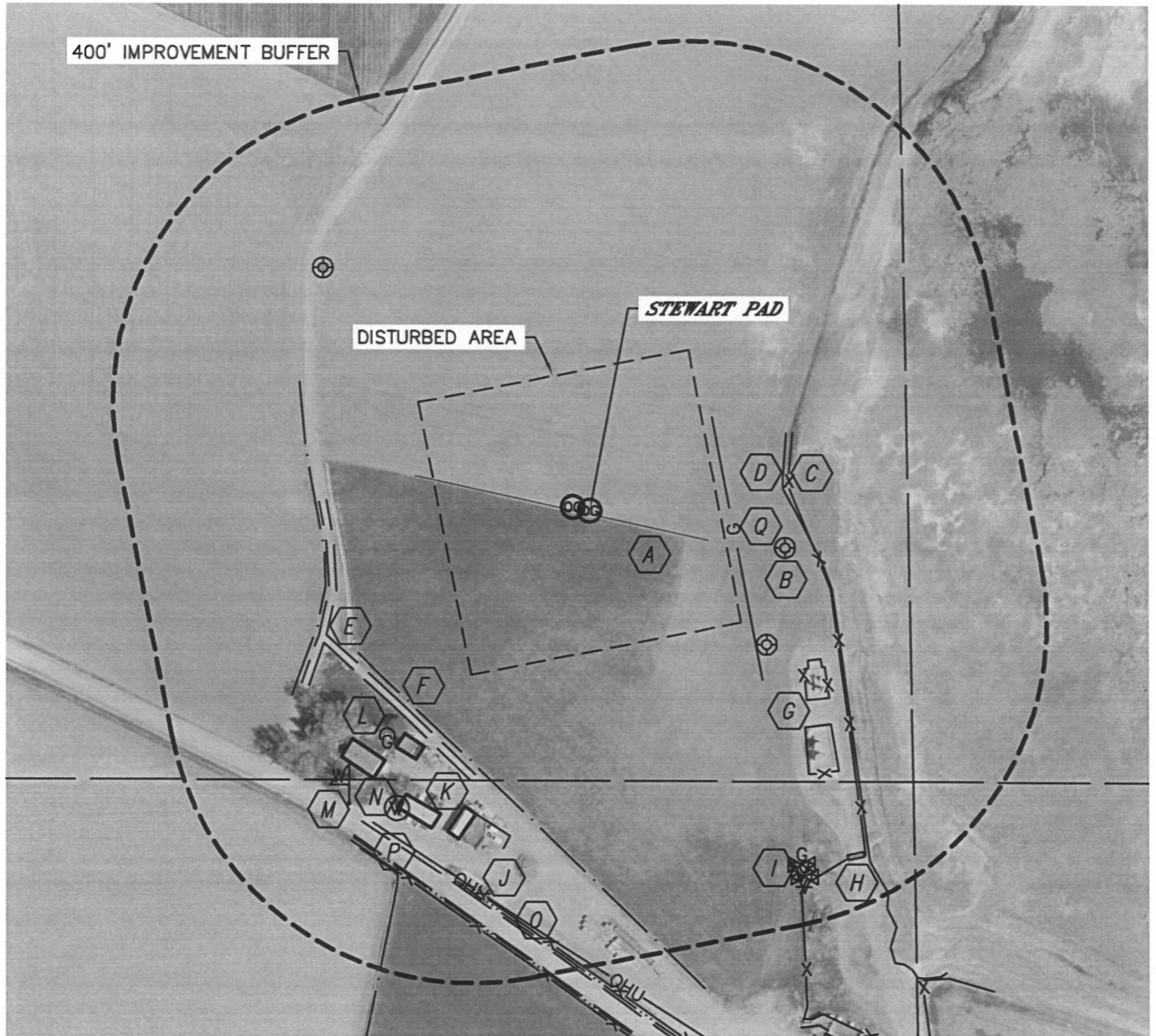


LOCATION DRAWING

STEWART G07-20D, STEWART FEDERAL G07-32D

SECTION: 7
TOWNSHIP: 4N
RANGE: 65W



IMPROVEMENTS:

(MEASURED FROM THE STEWART G07-20D LOCATION)

- | | | |
|--|--|--|
| A FIELD LINE 5' SW | G EX. PRODUCTION EQUIPMENT (NOBLE) 347' SE, 397' SE | M WATER MARKER 494' SW |
| B EX. WELLS 260' SE, 289' SE, 470' NW | H CATTLE GUARD 564' SE | N WATER WELL 462' SW |
| C FENCE 261' NE, 561' SE, 421' SW, 491' SW, 530' SW | I GAS VALVE 536' SE, 551' SE | O BARROW DITCH 495' SW, 513' SW |
| D EDGE OF WATER 255' NE | J OVERHEAD UTILITY 494' SW | P COUNTY ROAD 46 501' SW |
| E FIELD ROAD 351' SW, 338' W | K BUILDING 376' SW, 418' SW 421' SW, 440' SW | Q GAS LINE 180' NE |
| F DITCH 344' SW, 352' W, 535' SW | L PROPANE TANK 395' SW | |

NEAREST: BUILDING 376' SW, PUBLIC ROAD 501' SW (CR 46), ABOVE GROUND UTILITY 494' SW, RAILROAD 3295' NW, PROPERTY LINE 361' SW

