

---

**BILL BARRETT CORPORATION E-BILL**

---

**KAUFMAN 24D-24-692  
MAMM CREEK  
Garfield County , Colorado**

**Cement Surface Casing**  
14-Jun-2011

**Post Job Report**

*The Road to Excellence Starts with Safety*

<b>Sold To #:</b> 343492	<b>Ship To #:</b> 2858898	<b>Quote #:</b>	<b>Sales Order #:</b> 8235668
<b>Customer:</b> BILL BARRETT CORPORATION E-BILL		<b>Customer Rep:</b> Henderson, Josh	
<b>Well Name:</b> KAUFMAN	<b>Well #:</b> 24D-24-692	<b>API/UWI #:</b> 05-045-19647	
<b>Field:</b> MAMM CREEK	<b>City (SAP):</b> SILT	<b>County/Parish:</b> Garfield	<b>State:</b> Colorado
<b>Lat:</b> N 39.51 deg. OR N 39 deg. 30 min. 37.368 secs.		<b>Long:</b> W 107.615 deg. OR W -108 deg. 23 min. 6.914 secs.	
<b>Contractor:</b> Pro Petro		<b>Rig/Platform Name/Num:</b> Pro Petro	
<b>Job Purpose:</b> Cement Surface Casing			
<b>Well Type:</b> Development Well		<b>Job Type:</b> Cement Surface Casing	
<b>Sales Person:</b> METLI, MARSHALL		<b>Srvc Supervisor:</b> CHASTAIN, DERICK	<b>MBU ID Emp #:</b> 455848

**Job Personnel**

HES Emp Name	Exp Hrs	Emp #	HES Emp Name	Exp Hrs	Emp #	HES Emp Name	Exp Hrs	Emp #
BROWN, TRAVIS A	11	396848	CARTER, ERIC Earl	11	345598	CHASTAIN, DERICK Allan	11	455848
DEUSSEN, EDWARD Eric	6	485182						

**Equipment**

HES Unit #	Distance-1 way	HES Unit #	Distance-1 way	HES Unit #	Distance-1 way	HES Unit #	Distance-1 way
10551730C	120 mile	10713212	120 mile	10897849	120 mile	10951244	120 mile
10973571	120 mile						

**Job Hours**

Date	On Location Hours	Operating Hours	Date	On Location Hours	Operating Hours	Date	On Location Hours	Operating Hours
6/14/2011	11	2						
<b>TOTAL</b>	<i>Total is the sum of each column separately</i>							

**Job**

**Job Times**

Formation Name	Job			Date	Time	Time Zone
Formation Depth (MD)	Top	Bottom	Called Out			
Form Type	BHST			On Location		
Job depth MD	860. ft	Job Depth TVD	860. ft	Job Started	14 - Jun - 2011	14:25 MST
Water Depth		Wk Ht Above Floor	3. ft	Job Completed	14 - Jun - 2011	15:16 MST
Perforation Depth (MD)	From	To	Departed Loc			

**Well Data**

Description	New / Used	Max pressure psig	Size in	ID in	Weight lbm/ft	Thread	Grade	Top MD ft	Bottom MD ft	Top TVD ft	Bottom TVD ft
-------------	------------	-------------------	---------	-------	---------------	--------	-------	-----------	--------------	------------	---------------

**Sales/Rental/3<sup>rd</sup> Party (HES)**

Description	Qty	Qty uom	Depth	Supplier
PLUG,CMTG, TOP, 9 5/8, HWE, 8.16 MIN/9.06 MA	1	EA		

**Tools and Accessories**

Type	Size	Qty	Make	Depth	Type	Size	Qty	Make	Depth	Type	Size	Qty	Make
Guide Shoe					Packer					Top Plug	9 5/8	1	HES
Float Shoe					Bridge Plug					Bottom Plug			
Float Collar					Retainer					SSR plug set			
Insert Float										Plug Container	9 5/8	1	HES
Stage Tool										Centralizers			

**Miscellaneous Materials**

Gelling Agt	Conc	Surfactant	Conc	Acid Type	Qty	Conc %
Treatment Fld	Conc	Inhibitor	Conc	Sand Type	Size	Qty

**Fluid Data**

Stage/Plug #: 1									
Fluid #	Stage Type	Fluid Name	Qty	Qty uom	Mixing Density lbm/gal	Yield ft <sup>3</sup> /sk	Mix Fluid Gal/sk	Rate bbl/min	Total Mix Fluid Gal/sk

Stage/Plug #: 1										
Fluid #	Stage Type	Fluid Name	Qty	Qty uom	Mixing Density lbm/gal	Yield ft <sup>3</sup> /sk	Mix Fluid Gal/sk	Rate bbl/min	Total Mix Fluid Gal/sk	
1	Water Spacer		20.00	bbl	8.34	.0	.0	5		
2	Lead Cement	VERSACEM (TM) SYSTEM (452010)	120.0	sacks	12.3	2.38	13.75	5	13.75	
	13.75 Gal	FRESH WATER								
3	Tail Cement	SWIFTCEM (TM) SYSTEM (452990)	120.0	sacks	14.2	1.43	6.85	5	6.85	
	6.85 Gal	FRESH WATER								
4	Displacement		62.00	bbl	8.34	.0	.0	5		
Calculated Values			Pressures			Volumes				
Displacement	61.3	Shut In: Instant	Lost Returns		0	Cement Slurry	81.5	Pad		
Top Of Cement	SURFACE	5 Min	Cement Returns		25	Actual Displacement	61.3	Treatment		
Frac Gradient		15 Min	Spacers		20	Load and Breakdown		Total Job	163	
Rates										
Circulating		Mixing	5		Displacement	5		Avg. Job	5	
Cement Left In Pipe	Amount	44.5 ft	Reason	Shoe Joint						
Frac Ring # 1 @	ID	Frac ring # 2 @	ID	Frac Ring # 3 @	ID	Frac Ring # 4 @	ID			
The Information Stated Herein Is Correct				Customer Representative Signature						

*The Road to Excellence Starts with Safety*

<b>Sold To #:</b> 343492	<b>Ship To #:</b> 2858898	<b>Quote #:</b>	<b>Sales Order #:</b> 8235668
<b>Customer:</b> BILL BARRETT CORPORATION E-BILL		<b>Customer Rep:</b> Henderson, Josh	
<b>Well Name:</b> KAUFMAN		<b>Well #:</b> 24D-24-692	<b>API/UWI #:</b> 05-045-19647
<b>Field:</b> MAMM CREEK	<b>City (SAP):</b> SILT	<b>County/Parish:</b> Garfield	<b>State:</b> Colorado
<b>Legal Description:</b>			
<b>Lat:</b> N 39.51 deg. OR N 39 deg. 30 min. 37.368 secs.		<b>Long:</b> W 107.615 deg. OR W -108 deg. 23 min. 6.914 secs.	
<b>Contractor:</b> Pro Petro		<b>Rig/Platform Name/Num:</b> Pro Petro	
<b>Job Purpose:</b> Cement Surface Casing			<b>Ticket Amount:</b>
<b>Well Type:</b> Development Well		<b>Job Type:</b> Cement Surface Casing	
<b>Sales Person:</b> METLI, MARSHALL		<b>Srvc Supervisor:</b> CHASTAIN, DERICK	<b>MBU ID Emp #:</b> 455848

Activity Description	Date/Time	Cht #	Rate bbl/min	Volume bbl		Pressure psig		Comments
				Stage	Total	Tubing	Casing	
Other	06/14/2011 14:00							SPOT EQUIPMENT
Pre-Rig Up Safety Meeting	06/14/2011 14:05							WITH ALL HES PERSONNEL, JSA UTILIZED
Rig-Up Equipment	06/14/2011 14:10							1 HT 400 PUMP, 1 660 BULK TRAILER, 1 F-450 PICK-UP, 1 PLUG CONTAINER
Pre-Job Safety Meeting	06/14/2011 14:20							WITH ALL PERSONNEL ON LOCATION
Start Job	06/14/2011 14:25							TD 860', TP 837.5', SJ 44.5', FC 793', 9 5/8" 36# CASING, 12 3/8" AIR DRILLED HOLE
Pump Water	06/14/2011 14:26		2	2			15.0	FILL LINES
Test Lines	06/14/2011 14:28							3000 PSI, HELD PRESSURE FOR 2 MIN, NO LEAKS
Pump Spacer 1	06/14/2011 14:36		5	20			50.0	PUMP FRESH WATER AT 2 BPM UNTIL TUB WEIGHED UP, THEN BROUGHT RATE UP TO 5 BPM.
Pump Lead Cement	06/14/2011 14:43		5	50.9			145.0	120 SKS, 12.3 PPG, 2.38 FT3/SK, 13.77 GAL/SK
Pump Tail Cement	06/14/2011 14:53		5	30.6			180.0	120 SKS, 14.2 PPG, 1.43 FT3/SK, 6.85 GAL/SK
Shutdown	06/14/2011 14:59							
Drop Top Plug	06/14/2011 15:00							LAUNCH PLUG, VERIFIED PLUG LEFT CONTAINER

Activity Description	Date/Time	Cht #	Rate bbl/min	Volume bbl		Pressure psig		Comments
				Stage	Total	Tubing	Casing	
Pump Displacement	06/14/2011 15:01		5	61.3			250.0	FRESH WATER, CEMENT RETURNS TO SURFACE AT 35 BBLS AWAY ON DISPLACEMENT, 25 BBLS CEMENT TO SURFACE.
Slow Rate	06/14/2011 15:12		2	51			205.0	SLOW RATE 10 BBLS PRIOR TO CALCULATED DISPLACEMENT
Bump Plug	06/14/2011 15:16		2	61.3			740.0	PLUG BUMPED AT 230 PSI, PRESSURED UP TO 740 PSI
Check Floats	06/14/2011 15:18							FLOATS DID NOT HOLD.
Pressure Up Well	06/14/2011 15:19						250.0	
Shut In Well	06/14/2011 15:20						250.0	SHUT IN WELL AT 250 PSI
End Job	06/14/2011 15:20							NO SUGAR USED, NO ADD HOURS
Pre-Rig Down Safety Meeting	06/14/2011 15:30							WITH ALL HES PERSONNEL
Rig-Down Equipment	06/14/2011 15:35							RIGGED DOWN ENOUGH TO ALLOW RIG TO MOVE

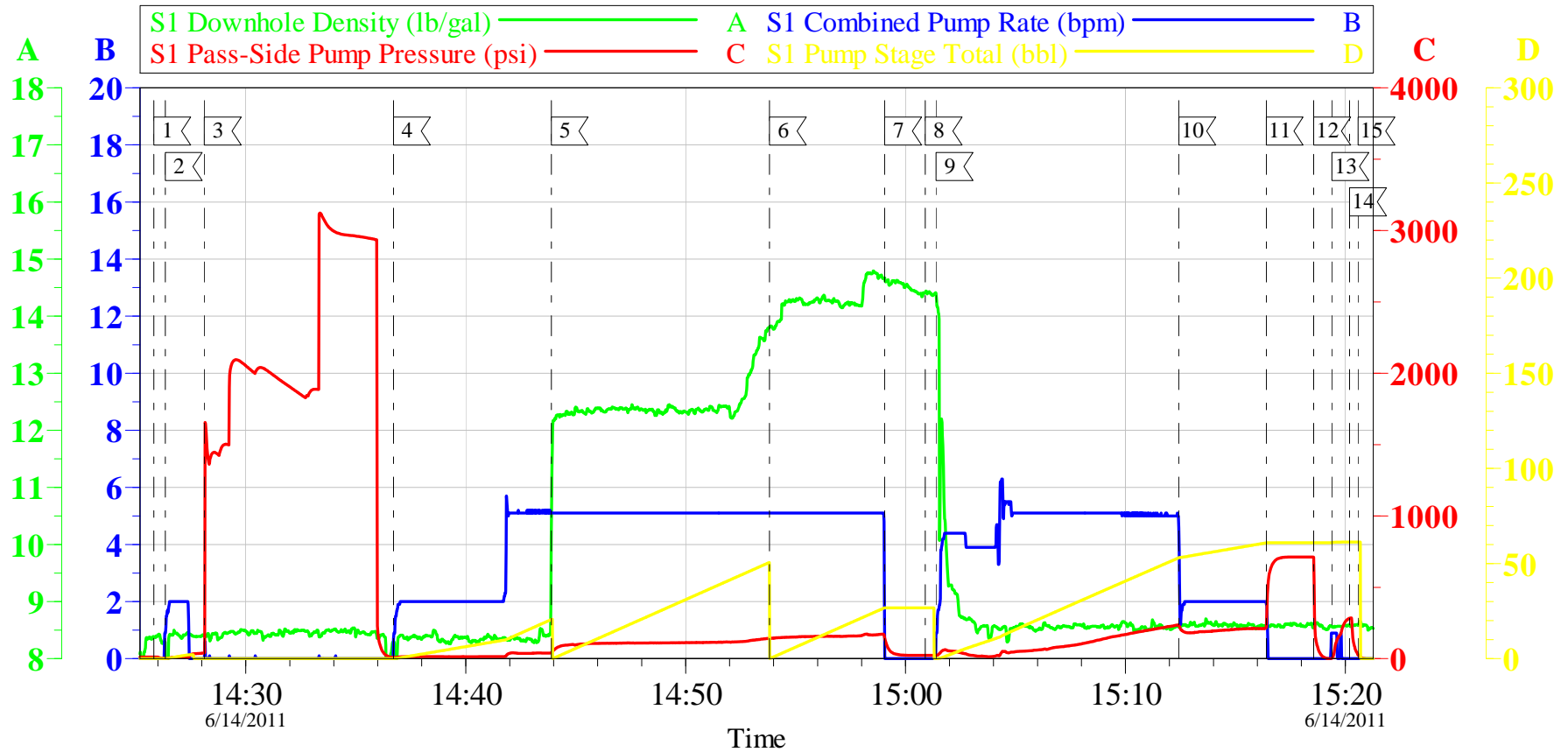
# JOB PROCEDURE

## Pro Petro

<u>Pre-Planned Job Procedure Surface</u>						
EVENT #	EVENT	VOLUME	SACKS	WEIGHT	YIELD	GAL/ SK
<b>1</b>	START JOB		<b>DENSITY OVER RATE</b>			
	FILL LINES	<b>2</b>				
<b>6</b>	TEST LINES	<b>2000 PSI</b>				
<b>9</b>	H2O SPACER	<b>20</b>				
<b>14</b>	LEAD CEMENT	<b>50.9</b>	<b>120</b>	<b>12.3</b>	<b>2.38</b>	<b>13.77</b>
<b>15</b>	TAIL CEMENT	<b>30.6</b>	<b>120</b>	<b>14.2</b>	<b>1.43</b>	<b>6.85</b>
	SHUTDOWN			MUD WT.	<b>0</b>	
<b>22</b>	DROP PLUG			CASING	<b>9.625</b>	<b>36</b>
<b>23</b>	DISPLACE WITH H2O	<b>61.3</b>		OPEN HOLE	<b>12.375</b>	
	SLOW RATE	<b>51</b>		<b>2 BBM</b>		
<b>26</b>	BUMP PLUG	<b>204</b>	<b>+500</b>	DISP FLUID	<b>8.34</b>	
	CHECK FLOATS					
<b>2</b>	END JOB					
			<b>Do Not Overdisplace</b>			
DISPLACEMENT	TOTAL PIPE	SHOE JOINT LENGTH		ANN FACTOR	BBL/FT	H2O REQ.
<b>61.40</b>	<b>837.5</b>	<b>44.50</b>		<b>0.0588</b>	<b>0.0773</b>	<b>172</b>
PSI TO LIFT	<b>0</b>	<b>*****Use Mud Scales on Each Tier*****</b>				
PSI TO LAND	<b>205</b>					
CEMENT TO SURFACE		<b>28.7</b>		TOTAL FLUID PUMPED		<b>163</b>
Collapse	<b>1616</b>	Burst	<b>2816</b>		SO#	<b>8235668</b>
HOT	461	TOT	376	CO REP	JOSH HENDERSON	

# BILL BARRETT

## KAUFMAN 24D-24-692 SURFACE



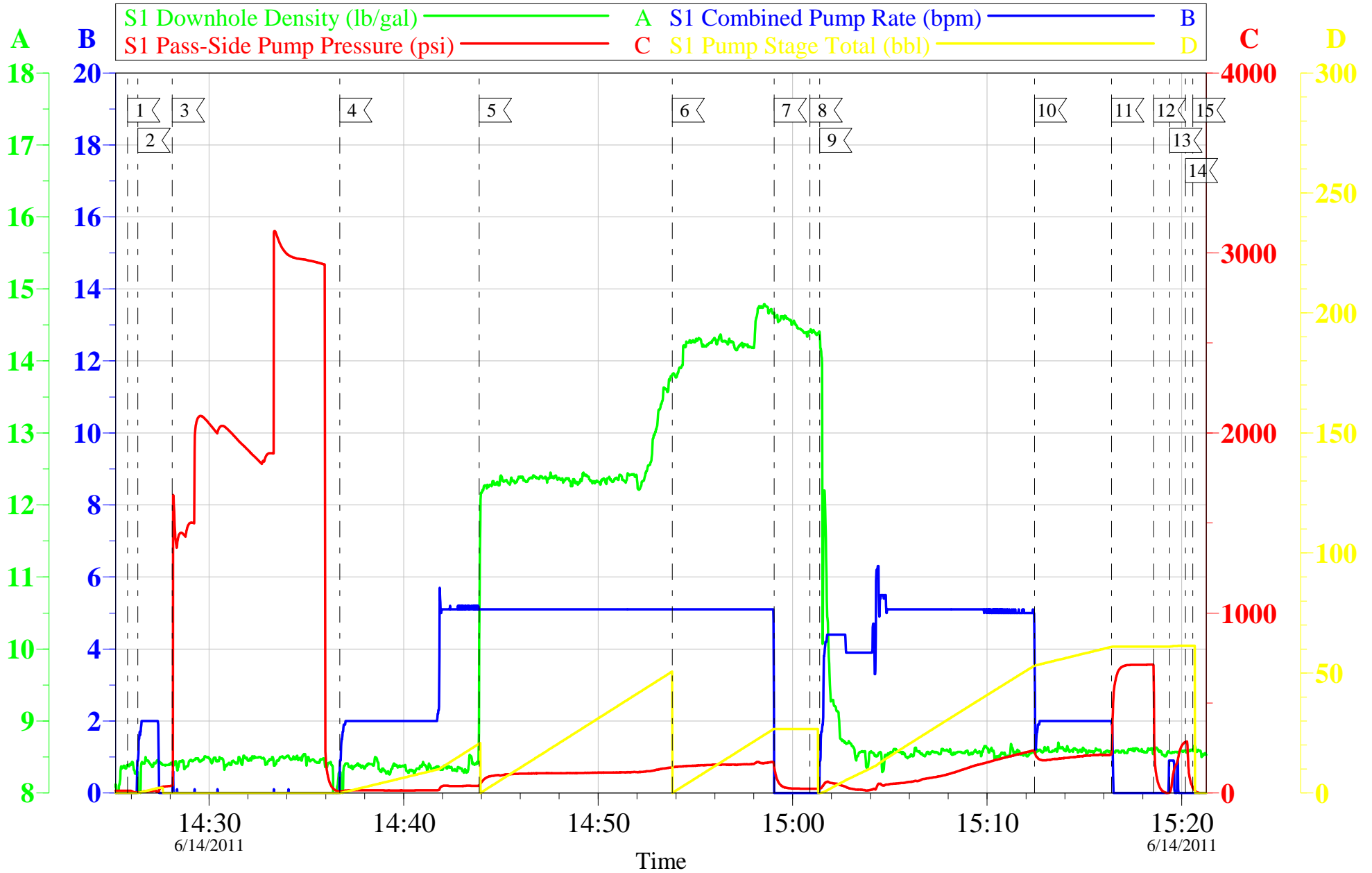
1	START JOB	14:25:49	2	FILL LINES	14:26:20	3	TEST LINES	14:28:07
4	PUMP H2O SPACER	14:36:43	5	PUMP LEAD CEMENT	14:43:53	6	PUMP TAIL CEMENT	14:53:49
7	SHUT DOWN	14:59:03	8	DROP PLUG	15:00:53	9	PUMP DISPLACEMENT	15:01:23
10	SLOW RATE	15:12:26	11	BUMP PLUG	15:16:24	12	CHECK FLOATS	15:18:34
13	PRESSURE UP WELL	15:19:23	14	SHUT IN WELL	15:20:11	15	END JOB	15:20:35

Customer:	BILL BARRETT	Job Date:	14-Jun-2011	Sales Order #:	8235668
Well Description:	KAUFMAN 24D-24-692	Job Type:	SURFACE	ADC Used:	YES
Customer Rep:	JOSH HENDERSON	Service Supervisor:	DERICK CHASTAIN	Pump # 2 / Operator:	TRAVIS BROWN

OptiCem v6.4.10  
14-Jun-11 15:44

# BILL BARRETT

## KAUFMAN 24D-24-692 SURFACE



Customer: BILL BARRETT	Job Date: 14-Jun-2011	Sales Order #: 8235668
Well Description: KAUFMAN 24D-24-692	Job Type: SURFACE	ADC Used: YES
Customer Rep: JOSH HENDERSON	Service Supervisor: DERICK CHASTAIN	Pump # 2 / Operator: TRAVIS BROWN

OptiCem v6.4.10  
14-Jun-11 15:51

# HALLIBURTON

## Water Analysis Report

Company: HES Date: 6/15/2011  
Submitted by: DERICK CHASTAIN Date Rec.: 6/15/2011  
Attention: J. Trout S.O.# 8235668  
Lease KAUFMAN Job Type: SURFACE  
Well # 24D-24-692

Specific Gravity	<i>MAX</i>	<b>1</b>
pH	<i>8</i>	<b>6</b>
Potassium (K)	<i>5000</i>	<b>0</b> Mg / L
Calcium (Ca)	<i>500</i>	<b>200</b> Mg / L
Iron (FE2)	<i>300</i>	<b>100</b> Mg / L
Chlorides (Cl)	<i>3000</i>	<b>200</b> Mg / L
Sulfates (SO <sub>4</sub> )	<i>1500</i>	<b>below 200</b> Mg / L
Chlorine (Cl <sub>2</sub> )		<b>0</b> Mg / L
Temp	<i>40-80</i>	<b>50</b> Deg
Total Dissolved Solids		<b>500</b> Mg / L

Respectfully: DERICK CHASTAIN

Title: CEMENTING SUPERVISOR

Location: Grand Junction, CO

NOTICE:

This report is limited to the described sample tested. Any person using or relying on this report agrees that Halliburton shall not be liable for any loss or damage whether due to act or omission resulting from such report or