
BILL BARRETT CORPORATION E-BILL

**KAUFMAN 23C-24-692
MAMM CREEK
Garfield County , Colorado**

Cement Surface Casing
15-Jun-2011

Job Site Documents

The Road to Excellence Starts with Safety

Sold To #: 343492		Ship To #: 2858926		Quote #:		Sales Order #: 8235676	
Customer: BILL BARRETT CORPORATION E-BILL				Customer Rep: Henderson, Josh			
Well Name: KAUFMAN			Well #: 23C-24-692			API/UWI #: 05-045-19649	
Field: MAMM CREEK		City (SAP): SILT		County/Parish: Garfield		State: Colorado	
Lat: N 39.51 deg. OR N 39 deg. 30 min. 37.523 secs.				Long: W 107.615 deg. OR W -108 deg. 23 min. 6.868 secs.			
Contractor: Pro Petro			Rig/Platform Name/Num: Pro Petro				
Job Purpose: Cement Surface Casing							
Well Type: Development Well			Job Type: Cement Surface Casing				
Sales Person: METLI, MARSHALL			Srvs Supervisor: CHASTAIN, DERICK			MBU ID Emp #: 455848	

Job Personnel

HES Emp Name	Exp Hrs	Emp #	HES Emp Name	Exp Hrs	Emp #	HES Emp Name	Exp Hrs	Emp #
BROWN, TRAVIS A	13	396848	CARTER, ERIC Earl	13	345598	CHASTAIN, DERICK Allan	13	455848
DEUSSEN, EDWARD Eric	13	485182						

Equipment

HES Unit #	Distance-1 way	HES Unit #	Distance-1 way	HES Unit #	Distance-1 way	HES Unit #	Distance-1 way
10551730C	120 mile	10784080	120 mile	10804579	120 mile	10951244	120 mile
10973571	120 mile						

Job Hours

Date	On Location Hours	Operating Hours	Date	On Location Hours	Operating Hours	Date	On Location Hours	Operating Hours
6/14/2011	8	0	6/15/2011	5	2			

TOTAL Total is the sum of each column separately

Job

Formation Name	Top	Bottom	Called Out	Date	Time	Time Zone
Formation Depth (MD)			On Location			
Form Type	BHST		Job Started	15 - Jun - 2011	03:06	MST
Job depth MD	850. ft	Job Depth TVD	850. ft	Job Completed	15 - Jun - 2011	03:58
Water Depth		Wk Ht Above Floor	3. ft	Departed Loc	15 - Jun - 2011	05:00
Perforation Depth (MD)	From	To				

Well Data

Description	New / Used	Max pressure psig	Size in	ID in	Weight lbm/ft	Thread	Grade	Top MD ft	Bottom MD ft	Top TVD ft	Bottom TVD ft
Open Hole				12.25				.	850		
Surface Casing	New		9.625	8.921	36.		J-55	.	850		

Sales/Rental/3rd Party (HES)

Description	Qty	Qty uom	Depth	Supplier
PLUG,CMTG,TOP,9 5/8,HWE,8.16 MIN/9.06 MA	1	EA		

Tools and Accessories

Type	Size	Qty	Make	Depth	Type	Size	Qty	Make	Depth	Type	Size	Qty	Make
Guide Shoe					Packer					Top Plug	9 5/8	1	HES
Float Shoe					Bridge Plug					Bottom Plug			
Float Collar					Retainer					SSR plug set			
Insert Float										Plug Container	9 5/8	1	HES
Stage Tool										Centralizers			

Miscellaneous Materials

Gelling Agt	Conc	Surfactant	Conc	Acid Type	Qty	Conc	%
Treatment Fld	Conc	Inhibitor	Conc	Sand Type	Size		Qty

Fluid Data

Stage/Plug #: 1

Fluid #	Stage Type	Fluid Name	Qty	Qty uom	Mixing Density lbm/gal	Yield ft ³ /sk	Mix Fluid Gal/sk	Rate bbl/min	Total Mix Fluid Gal/sk
1	Water Spacer		20.00	bbl	8.34	.0	.0	5	
2	Lead Cement	VERSACEM (TM) SYSTEM (452010)	120.0	sacks	12.31	2.38	13.77	5	13.77
	13.77 Gal	FRESH WATER							
3	Tail Cement	SWIFTCEM (TM) SYSTEM (452990)	120.0	sacks	14.2	1.43	6.85	5	6.85
	6.85 Gal	FRESH WATER							
4	Displacement		61.00	bbl	8.34	.0	.0	5	
Calculated Values		Pressures		Volumes					
Displacement	60.8	Shut In: Instant		Lost Returns	0	Cement Slurry	81.5	Pad	
Top Of Cement	SURFACE	5 Min		Cement Returns	23	Actual Displacement	60.8	Treatment	
Frac Gradient		15 Min		Spacers	20	Load and Breakdown		Total Job	163
Rates									
Circulating	0	Mixing	5	Displacement	5	Avg. Job			5
Cement Left In Pipe	Amount	0 ft	Reason	Shoe Joint					
Frac Ring # 1 @	ID	Frac ring # 2 @	ID	Frac Ring # 3 @	ID	Frac Ring # 4 @	ID		
The Information Stated Herein Is Correct				Customer Representative Signature					

The Road to Excellence Starts with Safety

Sold To #: 343492	Ship To #: 2858926	Quote #:	Sales Order #: 8235676
Customer: BILL BARRETT CORPORATION E-BILL		Customer Rep: Henderson, Josh	
Well Name: KAUFMAN	Well #: 23C-24-692	API/UWI #: 05-045-19649	
Field: MAMM CREEK	City (SAP): SILT	County/Parish: Garfield	State: Colorado
Legal Description:			
Lat: N 39.51 deg. OR N 39 deg. 30 min. 37.523 secs.		Long: W 107.615 deg. OR W -108 deg. 23 min. 6.868 secs.	
Contractor: Pro Petro		Rig/Platform Name/Num: Pro Petro	
Job Purpose: Cement Surface Casing			Ticket Amount:
Well Type: Development Well		Job Type: Cement Surface Casing	
Sales Person: METLI, MARSHALL		Srvc Supervisor: CHASTAIN, DERICK	MBU ID Emp #: 455848

Activity Description	Date/Time	Cht #	Rate bbl/min	Volume bbl		Pressure psig		Comments
				Stage	Total	Tubing	Casing	
Other	06/15/2011 02:00							SPOT EQUIPMENT
Pre-Rig Up Safety Meeting	06/15/2011 02:15							WITH ALL HES PERSONNEL
Rig-Up Equipment	06/15/2011 02:30							1 HT 400 PUMP, 1 660 BULK TRAILER, 1 F-450 PICK-UP, 1 PLUG CONTAINER
Pre-Job Safety Meeting	06/15/2011 02:50							WITH ALL PERSONNEL ON LOCATION
Start Job	06/15/2011 03:06							TD 850', TP 830.3', SJ 43.5', FC 786.8', 9 5/8" 36# CASING, 12 3/8" AIR DRILLED HOLE
Pump Water	06/15/2011 03:06		2	2			37.0	FILL LINES
Test Lines	06/15/2011 03:09							2300 PSI, HELD PRESSURE FOR 2 MIN, NO LEAKS
Pump Spacer 1	06/15/2011 03:15		5	20			95.0	PUMP FRESH WATER AT 2 BPM UNTIL TUB WEIGHED UP, THEN SPED RATE TO 5 BPM
Pump Lead Cement	06/15/2011 03:23		5	50.9			150.0	120 SKS, 12.3 PPG, 2.38 FT3/SK, 13.77 GAL/SK
Pump Tail Cement	06/15/2011 03:33		5	30.6			165.0	120 SKS, 14.2 PPG, 1.43 FT3/SK, 6.85 GAL/SK
Shutdown	06/15/2011 03:39							
Drop Top Plug	06/15/2011 03:42							LAUNCH PLUG, VERIFY PLUG LEFT CONTAINER
Activity Description	Date/Time	Cht	Rate bbl/min	Volume bbl		Pressure psig		Comments

Sold To # : 343492

Ship To # :2858926

Quote # :

Sales Order # :

8235676

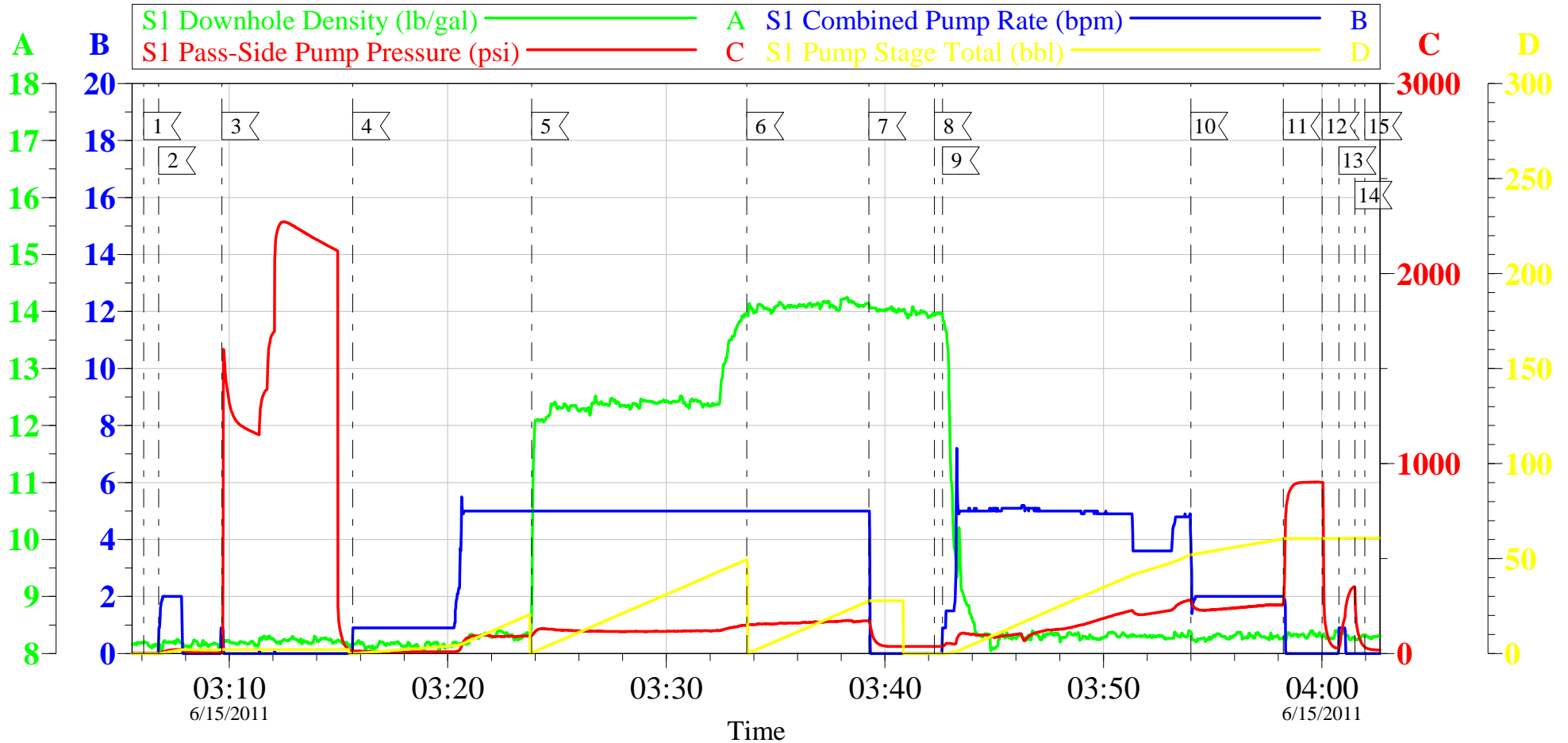
SUMMIT Version: 7.2.27

Wednesday, November 30, 2011 06:22:00

		#		Stage	Total	Tubing	Casing	
Pump Displacement	06/15/2011 03:42		5	60.8			277.0	FRESH WATER, CEMENT RETURNS TO SURFACE AT 37.8 BBLS AWAY ON DISPLACEMENT, 23 BBLS CEMENT TO SURFACE.
Slow Rate	06/15/2011 03:54		2	50			260.0	SLOW RATE 10 BBLS PRIOR TO CALCULATED DISPLACEMENT
Bump Plug	06/15/2011 03:58		2	60.8			900.0	PLUG BUMPED PLUG AT 260 PSI, PRESSURED UP TO 900 PSI
Check Floats	06/15/2011 04:00							FLOATS DID NOT HOLD
Pressure Up Well	06/15/2011 04:00						250.0	
Shut In Well	06/15/2011 04:01						250.0	SHUT IN WELL AT PSI
End Job	06/15/2011 04:01							NO SUGAR USED, NO ADD HOURS
Pre-Rig Down Safety Meeting	06/15/2011 04:10							WITH ALL HES PERSONNEL
Rig-Down Equipment	06/15/2011 04:15							
Pre-Convoy Safety Meeting	06/15/2011 04:50							WITH ALL HES PERSONNEL
Depart Location for Service Center or Other Site	06/15/2011 05:00							THANK YOU FOR USING HALLIBURTON CEMENT DEPARTMENT. DERICK CHASTAIN AND CREW

BILL BARRETT

KAUFMAN 23C-24-692 SURFACE

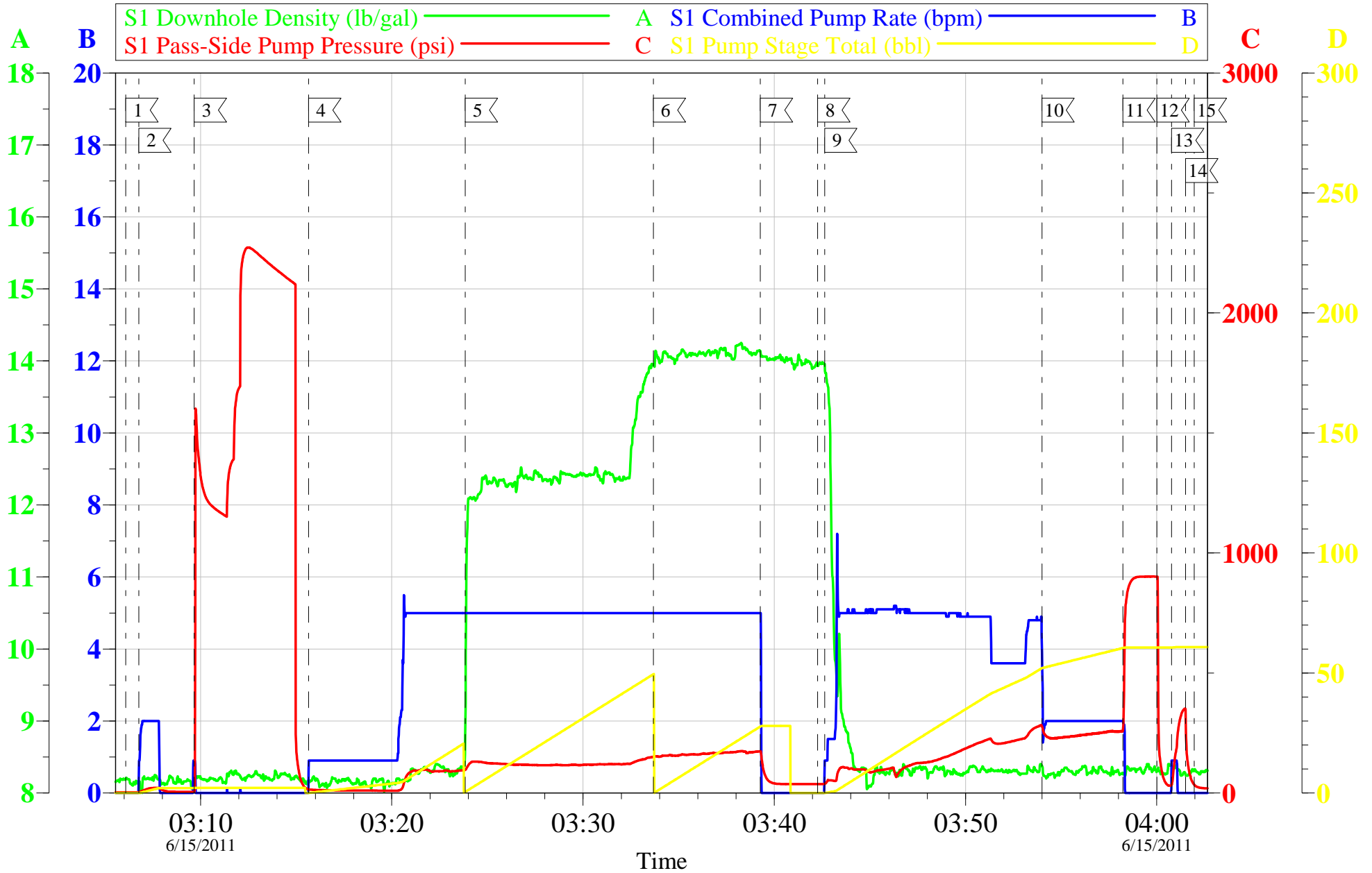


Customer: BILL BARRETT	Job Date: 15-Jun-2011	Sales Order #: 8235676
Well Description: KAUFMAN 23C-24-692	Job Type: SURFACE	ADC Used: YES
Customer Rep: JOSH HENDERSON	Service Supervisor: DERICK CHASTAIN	Pump # 2/Operator: ED DEUSSEN

OptiCem v6.4.10
15-Jun-11 04:28

BILL BARRETT

KAUFMAN 23C-24-692 SURFACE



Customer: BILL BARRETT	Job Date: 15-Jun-2011	Sales Order #: 8235676
Well Description: KAUFMAN 23C-24-692	Job Type: SURFACE	ADC Used: YES
Customer Rep: JOSH HENDERSON	Service Supervisor: DERICK CHASTAIN	Pump # 2/Operator: ED DEUSSEN

OptiCem v6.4.10
15-Jun-11 04:27

HALLIBURTON

Water Analysis Report

Company: HES

Submitted by: DERICK CHASTAIN

Attention: J. Trout

Lease KAUFMAN

Well # 23C-24-692

Date: 6/14/2011

Date Rec.: 6/14/2011

S.O.# 8235676

Job Type: SURFACE

Specific Gravity	<i>MAX</i>	1
pH	<i>8</i>	6
Potassium (K)	<i>5000</i>	0 Mg / L
Calcium (Ca)	<i>500</i>	200 Mg / L
Iron (FE2)	<i>300</i>	100 Mg / L
Chlorides (Cl)	<i>3000</i>	200 Mg / L
Sulfates (SO ₄)	<i>1500</i>	below 200 Mg / L
Chlorine (Cl ₂)		0 Mg / L
Temp	<i>40-80</i>	50 Deg
Total Dissolved Solids		500 Mg / L

Respectfully: DERICK CHASTAIN

Title: CEMENTING SUPERVISOR

Location: Grand Junction, CO

NOTICE:

This report is limited to the described sample tested. Any person using or relying on this report agrees that Halliburton shall not be liable for any loss or damage whether due to act or omission resulting from such report or