

HALLIBURTON**Cementing Job Log***The Road to Excellence Starts with Safety*

Sold To #: 346707	Ship To #: 2881011	Quote #:	Sales Order #: 8541104
Customer: QUICKSILVER RESOURCES INC-EBUSINESS		Customer Rep: Hord, Ryan	
Well Name: Bret Grandbouche	Well #: 24-02H	API/UWI #:	
Field:	City (SAP): CRAIG	County/Parish: Moffat	State: Colorado
Legal Description: Section 12 Township 6N Range 93W			
Lat:		Long:	
Contractor: DHS		Rig/Platform Name/Num: 6	
Job Purpose: Cement Production Casing		Ticket Amount:	
Well Type: Exploratory / Wildcat		Job Type: Cement Production Casing	
Sales Person: SCOTT, KYLE		Srv Supervisor: PAUU, SEMISI	
		MBU ID Emp #: 445202	

Activity Description	Date/Time	Cht #	Rate bbl/ min	Volume bbl		Pressure psig		Comments
				Stage	Total	Tubing	Casing	
Call Out	10/21/2011 15:30							
Pre-Convoy Safety Meeting	10/21/2011 18:15							
Depart from Service Center or Other Site	10/21/2011 18:30							
Arrive At Loc	10/21/2011 20:00							
Safety Meeting - Assessment of Location	10/21/2011 20:15							
Pre-Rig Up Safety Meeting	10/21/2011 21:15							
Rig-Up Equipment	10/21/2011 22:00							
Rig-Up Completed	10/21/2011 23:00							
Pre-Job Safety Meeting	10/21/2011 23:40							
Pressure Test	10/21/2011 23:45		0.5		2		5000. 0	Pressure tested lines to 5000 psi, no leaks
Pump Spacer 1	10/21/2011 23:53		4		20		670.0	Pumped 20 bbl TSIII with Musol and Sem-7
Pump Spacer	10/22/2011 00:17		4		70		670.0	Pumped 70 bbl of Mud Recovery
Shutdown	10/22/2011 00:20							Shutdown during Mud Recovery due to Company Man at shakers informing us that they lost returns.
Prime Pumps	10/22/2011 00:24							Primed Pumps again due to aerated spacer causing us to lose prime
Pump Spacer	10/22/2011 00:35		4		70		670.0	Continued Pumping Mud Recovery (Returns Back to Pit)

Sold To #: 346707

Ship To #: 2881011

Quote #:

Sales Order #: 8541104

SUMMIT Version: 7.2.27

Saturday, October 22, 2011 04:10:00

HALLIBURTON**Cementing Job Log**

Activity Description	Date/Time	Cht #	Rate bbl/ min	Volume bbl		Pressure psig		Comments
				Stage	Total	Tubing	Casing	
Pump Spacer 1	10/22/2011 00:47		4		10		700.0	Pumped 10 bbl MudFlush
Shutdown	10/22/2011 00:57							Finished Pumping Spacer Train, Prepared to drop plug
Drop Plug	10/22/2011 00:58							4.5" HWE Bottom Plug dropped by Semisi Pauu
Pump Cement	10/22/2011 01:00		3		157		600.0	Pumped 156.8 bbl LifeCem (595 SKS) at 13.5#/gal 1.48 Yield 6.05 gal/sks
Shutdown	10/22/2011 01:37		3	120	157		600.0	Shutdown due to issues getting product back to Truck. Shutdown to build density back up before continuing.
Pump Cement	10/22/2011 01:40		3	120	157		600.0	Continued Pump Cement
Other	10/22/2011 01:52							Finished pumping Cement.
Clean Lines	10/22/2011 01:53							
Drop Plug	10/22/2011 01:57							4.5" HWE Top Plug Dropped By Semisi Pauu
Pump Displacement	10/22/2011 01:58		5		185		200.0	Started 185.3 bbl Displacement with 7% Pottasium Chloride
Slow Rate	10/22/2011 02:15		2	170	185		3200. 0	Slowed Rate in preparation to landing the plug
Bump Plug	10/22/2011 02:30		2	182	185		3950. 0	Bumped plug at 3250 psi, pressured up to 3900 psi as per company man request. Pressure Immediately Dropped off when pumps kicked out. Pumped additional 3 bbls of displacment as per company mans request due to landing 3 bbls early.
Check Floats	10/22/2011 02:40							Checked floats back to Truck. Floats held, 1bbl Back
Safety Meeting - Pre Rig-Down	10/22/2011 02:45							

Sold To #: 346707

Ship To #: 2881011

Quote #:

Sales Order #: 8541104

SUMMIT Version: 7.2.27

Saturday, October 22, 2011 04:10:00

HALLIBURTON***Cementing Job Log***

Activity Description	Date/Time	Cht #	Rate bbl/ min	Volume bbl		Pressure psig		Comments
				Stage	Total	Tubing	Casing	
Rig-Down Equipment	10/22/2011 02:50							
Rig-Down Completed	10/22/2011 03:50							
Pre-Convoy Safety Meeting	10/22/2011 03:55							
Depart from Service Center or Other Site	10/22/2011 04:00							This Job was completed safely by Semisi Pauu and crew. Thank you for choosing Halliburton Cementing

Sold To #: 346707

Ship To #: 2881011

Quote #:

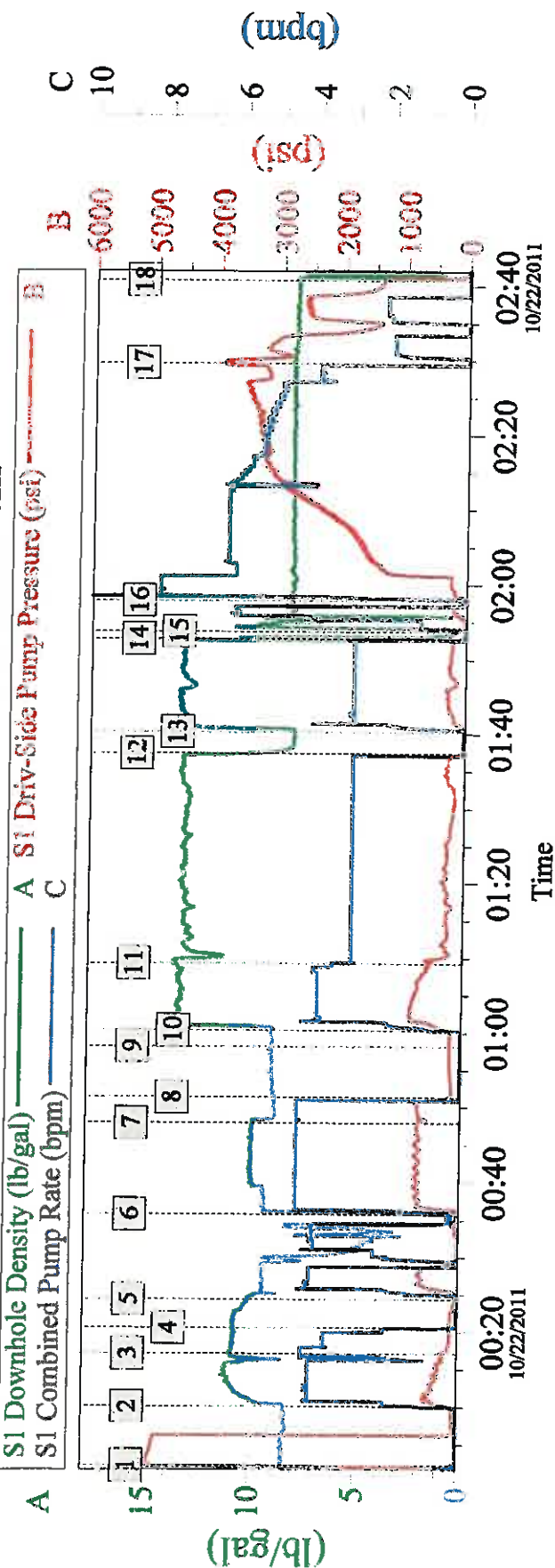
Sales Order #: 8541104

SUMMIT Version: 7.2.27

Saturday, October 22, 2011 04:10:00

QUICKSILVER 4.5" PRODUCTION HORIZONTAL

OCTOBER-22-2011 SO# 8541104 BRET GRANDBOUCHE 24-02H



Intersection	SDPP	Intersection	SDPP
1 Pressure Test	00:02:11	2 Pump TSHH	00:10:07
3 Pump MudRec	00:17:08	4 Shutdown	00:20:34
5 Prime Pumps	00:24:19	6 Pump Mud Rec	00:35:46
7 Pump MudFlush	00:47:53	8 Finish Spacers	00:51:18
9 Drop Bottom Plug	00:58:13	10 Pump Cement	01:00:19
11 SlowRate/Build Dens	01:09:14	12 Shutdown/ Build Tub	01:37:21
13 Pump Cement	01:40:14	14 Shutdown/Drop Plug	01:52:41
15 Clean Lines	01:53:43	16 Pump Displacement	01:57:47
17 Bump Plug	02:29:36	18 Check Floats	02:40:44
			1407

Customer: BILL BARRET	Job Date: 21-Oct-2011	Sales Order #: 8541104
Well Description: BRET GRAND BOUCHE	RIG NAME: DHS 6	PUMP TRUCK: 10872113
SVC LDR: TERRY BERECE	SVC SUP: SEMISI PAU	SVC OPR: ERIC FUCHS