

**HALLIBURTON**

---

**BILL BARRETT CORPORATION E-BILL**

---

**KAUFMAN 23B-24-692  
MAMM CREEK  
Garfield County , Colorado**

**Cement Surface Casing  
15-Jun-2011**

**Post Job Report**

## The Road to Excellence Starts with Safety

Sold To #: 343492	Ship To #: 2858925	Quote #:	Sales Order #: 8235673
Customer: BILL BARRETT CORPORATION E-BILL	Customer Rep: Henderson, Josh		
Well Name: KAUFMAN	Well #: 23B-24-692	API/UWI #: 05-045-19646	
Field: MAMM CREEK	City (SAP): SILT	County/Parish: Garfield	State: Colorado
Lat: N 39.51 deg. OR N 39 deg. 30 min. 37.469 secs.	Long: W 107.615 deg. OR W -108 deg. 23 min. 7.015 secs.		
Contractor: PATTERSON 307	Rig/Platform Name/Num: PATTERSON 307		
Job Purpose: Cement Surface Casing			
Well Type: Development Well	Job Type: Cement Surface Casing		
Sales Person: METLI, MARSHALL	Srv Supervisor: KUKUS, CRAIG	MBU ID Emp #: 369124	

## Job Personnel

HES Emp Name	Exp Hrs	Emp #	HES Emp Name	Exp Hrs	Emp #	HES Emp Name	Exp Hrs	Emp #
BECK, MICHAEL George	3.5	489151	BURKE, BRENDAN Patrick	3.5	487782	KUKUS, CRAIG A	3.5	369124
WYCKOFF, RYAN Scott	3.5	476117						

## Equipment

HES Unit #	Distance-1 way	HES Unit #	Distance-1 way	HES Unit #	Distance-1 way	HES Unit #	Distance-1 way
10784080	120 mile	10804579	120 mile	10829469	120 mile	10872429	120 mile
11360883	120 mile						

## Job Hours

Date	On Location Hours	Operating Hours	Date	On Location Hours	Operating Hours	Date	On Location Hours	Operating Hours
6/15/11	3.5							

TOTAL	Total is the sum of each column separately							
-------	--	--	--	--	--	--	--	--

## Job

Formation Name						Date	Time	Time Zone	
Formation Depth (MD)	Top			Bottom		Called Out	15 - Jun - 2011	10:00	MST
Form Type			BHST			On Location	15 - Jun - 2011	15:00	MST
Job depth MD	840. ft		Job Depth TVD		840. ft	Job Started	15 - Jun - 2011	16:24	MST
Water Depth			Wk Ht Above Floor		4. ft	Job Completed	15 - Jun - 2011	17:18	MST
Perforation Depth (MD)	From			To		Departed Loc			

## Well Data

Description	New / Used	Max pressure psig	Size in	ID in	Weight lbm/ft	Thread	Grade	Top MD ft	Bottom MD ft	Top TVD ft	Bottom TVD ft
open hole				12.25				.	800.		
Surface Casing	New		9.625	8.921	36.		J-55	.	800.		

Sales/Rental/3<sup>rd</sup> Party (HES)

Description	Qty	Qty uom	Depth	Supplier
PLUG,CMTG,TOP,9 5/8,HWE,8.16 MIN/9.06 MA	1	EA		

## Tools and Accessories

Type	Size	Qty	Make	Depth	Type	Size	Qty	Make	Depth	Type	Size	Qty	Make
Guide Shoe					Packer					Top Plug	9 5/8	1	HES
Float Shoe					Bridge Plug					Bottom Plug			
Float Collar					Retainer					SSR plug set			
Insert Float										Plug Container	9 5/8	1	HES
Stage Tool										Centralizers			

## Miscellaneous Materials

Gelling Agt	Conc	Surfactant	Conc	Acid Type	Qty	Conc	%
Treatment Fld	Conc	Inhibitor	Conc	Sand Type	Size		Qty

## Fluid Data

Stage/Plug #: 1

Fluid #	Stage Type	Fluid Name	Qty	Qty uom	Mixing Density lbm/gal	Yield ft <sup>3</sup> /sk	Mix Fluid Gal/sk	Rate bbl/min	Total Mix Fluid Gal/sk
1	Water Spacer		20.00	bbl	.	.0	.0	4	
2	Lead Cement	VERSACEM (TM) SYSTEM (452010)	120.0	sacks	12.31	2.38	13.77	4	13.77
	13.77 Gal	FRESH WATER							
3	Tail Cement	SWIFTCEM (TM) SYSTEM (452990)	120.0	sacks	14.2	1.43	6.85	4	6.85
	6.85 Gal	FRESH WATER							
4	Displacement		60.00	bbl	.	.0	.0	6	
<b>Calculated Values</b>		<b>Pressures</b>		<b>Volumes</b>					
Displacement	60	Shut In: Instant		Lost Returns	0	Cement Slurry	81.3	Pad	
Top Of Cement	SURFACE	5 Min		Cement Returns	25	Actual Displacement	60	Treatment	
Frac Gradient		15 Min		Spacers	20	Load and Breakdown		Total Job	162
<b>Rates</b>									
Circulating	NONE	Mixing	4	Displacement	6	Avg. Job	5		
Cement Left In Pipe	Amount	44.75 ft	Reason	Shoe Joint					
Frac Ring # 1 @	ID	Frac ring # 2 @	ID	Frac Ring # 3 @	ID	Frac Ring # 4 @	ID		
The Information Stated Herein Is Correct				Customer Representative Signature					

*The Road to Excellence Starts with Safety*

<b>Sold To #:</b> 343492	<b>Ship To #:</b> 2858925	<b>Quote #:</b>	<b>Sales Order #:</b> 8235673
<b>Customer:</b> BILL BARRETT CORPORATION E-BILL		<b>Customer Rep:</b> Henderson, Josh	
<b>Well Name:</b> KAUFMAN	<b>Well #:</b> 23B-24-692	<b>API/UWI #:</b> 05-045-19646	
<b>Field:</b> MAMM CREEK	<b>City (SAP):</b> SILT	<b>County/Parish:</b> Garfield	<b>State:</b> Colorado
<b>Legal Description:</b>			
<b>Lat:</b> N 39.51 deg. OR N 39 deg. 30 min. 37.469 secs.		<b>Long:</b> W 107.615 deg. OR W -108 deg. 23 min. 7.015 secs.	
<b>Contractor:</b> PATTERSON 307		<b>Rig/Platform Name/Num:</b> PATTERSON 307	
<b>Job Purpose:</b> Cement Surface Casing			<b>Ticket Amount:</b>
<b>Well Type:</b> Development Well		<b>Job Type:</b> Cement Surface Casing	
<b>Sales Person:</b> METLI, MARSHALL		<b>Srv Supervisor:</b> KUKUS, CRAIG	<b>MBU ID Emp #:</b> 369124

Activity Description	Date/Time	Cht #	Rate bbl/min	Volume bbl		Pressure psig		Comments
				Stage	Total	Tubing	Casing	
Call Out	06/15/2011 10:00							
Depart Yard Safety Meeting	06/15/2011 11:45							SAFETY MEETING INVOLVING THE ENTIRE CMT CREW
Circulate Well	06/15/2011 15:00							NO CIRCULATION
Arrive At Loc	06/15/2011 15:00							RIG WAS DONE RUNNING CSG
Assessment Of Location Safety Meeting	06/15/2011 15:10							ASSESSMENT OF LOCATION INVOLVING THE ENTIRE CMT CREW
Pre-Rig Up Safety Meeting	06/15/2011 15:20							SAFETY MEETING INVOLVING THE ENTIRE CMT CREW
Rig-Up Equipment	06/15/2011 15:30							RESET HEAD AND RIG UP TO HEAD AND LINE TO PIT / RIG UP TO UP RIGHT FOR WATER
Pre-Job Safety Meeting	06/15/2011 16:15							SAFETY MEETING INVOLVING EVERYONE ON LOCATION
Start Job	06/15/2011 16:24							T D 840 FT TP 818.6 FT SJ 44.75 FT OH 12 1/4 IN MUD WT 8.3# PIPE 9 5/8 IN 36 # J-55
Other	06/15/2011 16:25		2	2			14.0	FILL LINES WITH FRESH WATER
Pressure Test	06/15/2011 16:27		0.5			4000.0		PRESSURE TEST GOOD
Pump Spacer 1	06/15/2011 16:30		4	20			32.0	FRESH WATER SPACER
Activity Description	Date/Time	Cht	Rate bbl/min	Volume bbl		Pressure psig		Comments

Sold To # : 343492

Ship To # :2858925

Quote # :

Sales Order # :

8235673

SUMMIT Version: 7.20.130

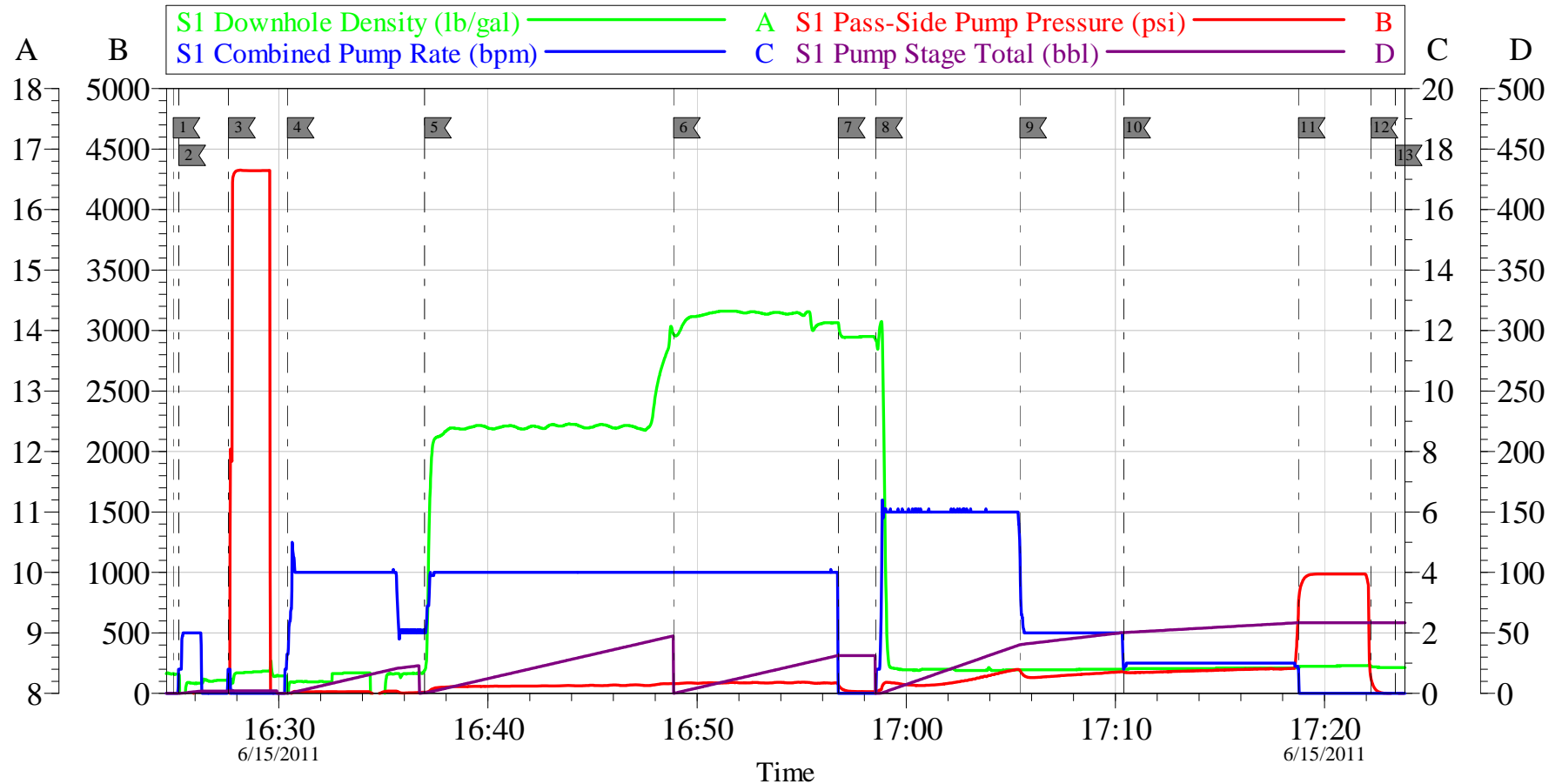
Saturday, June 18, 2011 10:53:00

		#		Stage	Total	Tubing	Casing	
Pump Lead Cement	06/15/2011 16:36		4	50.8			85.0	PUMP 120 SKS LEAD CEMENT AT 12.3 PPG 2.38 Y 13.75 GAL/SK
Pump Tail Cement	06/15/2011 16:48		4	30.5			101.0	PUMP 120 SKS TAIL CEMENT AT 14.2 PPG 1.43 Y 6.85 GAL/SK GOT RETURNS AT 5 BBLs TAIL CEMENT GONE
Shutdown	06/15/2011 16:56							
Drop Top Plug	06/15/2011 16:56							PLUG LEFT THE PLUG CONTAINER
Pump Displacement	06/15/2011 16:58		6	59.8			213.0	PUMP H20 DISPLACEMENT / HAD RETURNS
Slow Rate	06/15/2011 17:05		2	40			192.0	SLOWED RATED TO 2 BBL MIN AND LAST 10 BBLs SLOWED TO 1 BBL MIN
Bump Plug	06/15/2011 17:18		1	60			970.0	PLUG LANDED AT 225 PSI / GOT CEMENT BACK TO SURFACE AT 36 BBLs DISPLACEMENT GONE TOTAL TO SURFACE 25 BBLs
Check Floats	06/15/2011 17:22							FLOATS HELD / GOT 1.5BBLs BACK TO TANKS AND SHUT IN WELL
End Job	06/15/2011 17:23							
Pre-Rig Down Safety Meeting	06/15/2011 17:30							SAFETY MEETING INVOLVING THE ENTIRE CMT CREW
Rig-Down Equipment	06/15/2011 17:35							RIG DOWN TO CLEAN UP LINE AND SHUT DOWN / CREW TO BE STAYING ON LOCATION FOR NEXT JOB
Comment	06/15/2011 18:30							THANK YOU FOR USING HALLIBURTON, CRAIG KUKUS AND CREW

EVENT #	EVENT	VOLUME	SACKS	WEIGHT	YIELD	GAL/ SK
1	Start Job		<b>MAX</b> <u><b>1616</b></u>			
	FILL LINES	2				
6	Test Lines	3500.0				
9	H2O Spacer	20.0		8.3		
13	LEAD CEMENT	50.8	120	12.3	2.38	13.75
15	TAIL CEMENT	30.5	120	14.2	1.43	6.85
	SHUTDOWN					
	DROP TOP PLUG					
25	H2O DISPLACE	59.8		8.3		
	SLOW RATE	40.0		slow	2BBL	
	LAND PLUG	210.0	PLUS	500	OVER	
	CHECK FLOATS					
	END JOB		Do Not Overdisplace			
DISPLACEMENT	TOTAL PIPE	SHOE JOINT LENGTH		FLOAT COLLAR	BBL/FT	H2O REQ.
59.80	818.6	44.75		773.85	.0773	200
PSI TO LIFT	354	<u>*****Use Mud Scales on Each Tier*****</u>				
Total Displacement	59.80					
CALCULATED PSI LAND		210		TOTAL FLUID PUMPED		162
Collapse	2020	Burst	3520		SO#	8235673

# BARRETT

## SURFACE KAUFMAN 23A-24-692



### Local Event Log

1 START JOB	16:24:57	2 PRIME LINES	16:25:13	3 PRESSURE TEST	16:27:36
4 PUMP H2O SPACER	16:30:25	5 PUMP LEAD CEMENT	16:36:58	6 PUMP TAIL CEMENT	16:48:53
7 SHUT DOWN/DROP PLUG	16:56:45	8 PUMP H2O DISPLACEMENT	16:58:33	9 SLOW RATE	17:05:26
10 SLOW RATE	17:10:24	11 BUMP PLUG	17:18:45	12 CHECKFLOATS	17:22:14
13 END JOB	17:23:23				

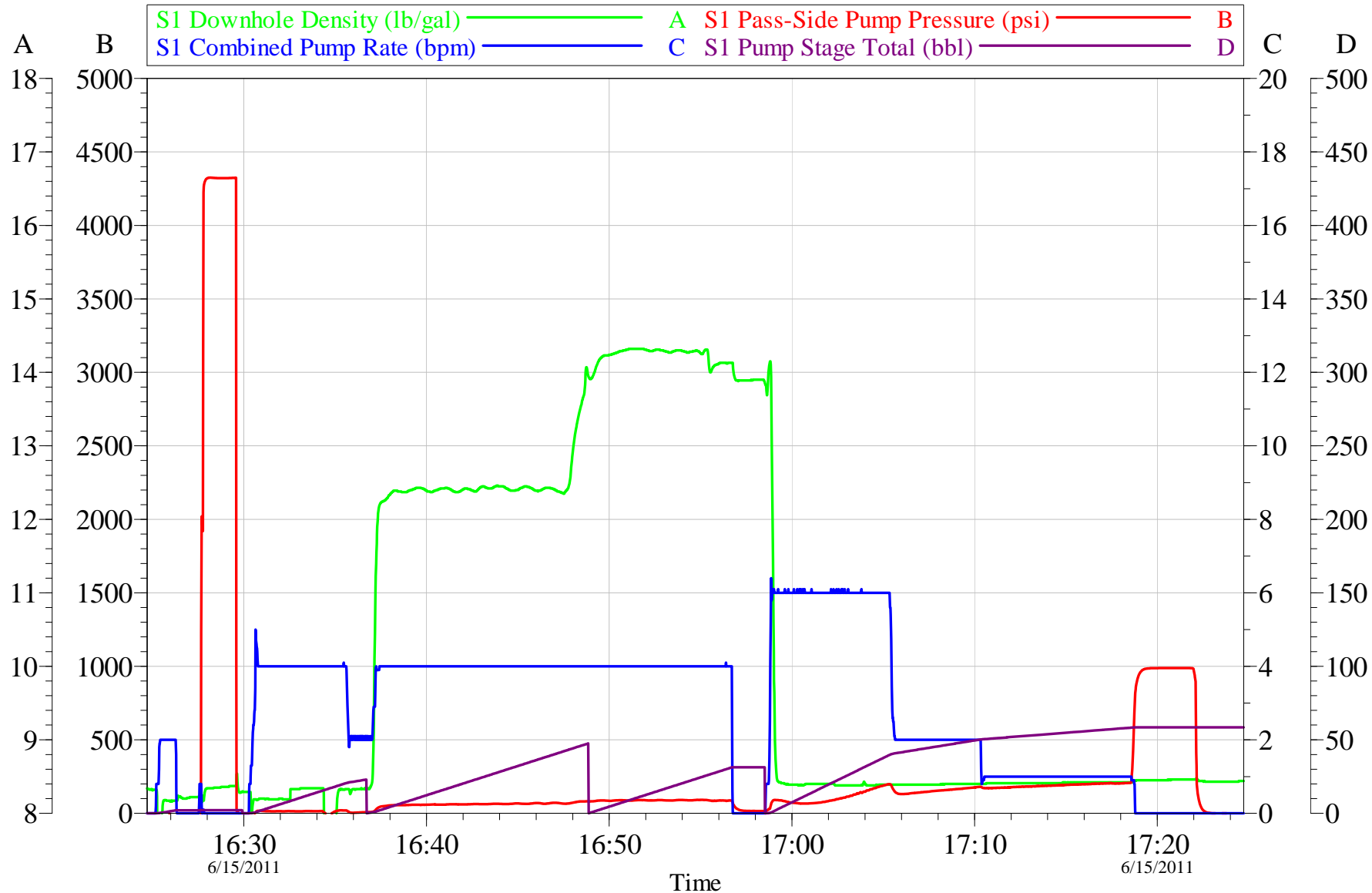
Customer: **BARRETT**  
 Well Description: **KAUFMAN 23A-24-692**  
 Company Rep: **JOSH HENDERSON**

Job Date: **15-Jun-2011**  
 Job Type: **SURFACE**  
 Cement Supervisor: **CRAIG KUKUS**

Sales Order #: **8235673**  
 ADC Used: **YES**  
 Elite #/Operator: **ELITE 7 RYAN WYCKOFF**

OptiCem v6.4.8  
 15-Jun-11 17:31

Customer  
Job Type



Customer:  
Well Description:

Job Date: 15-Jun-2011  
Job Type:

Sales Order #: 8235673  
ADC Used:

OptiCem v6.4.8  
15-Jun-11 18:08



<b>Sales Order #:</b> 8235673	<b>Line Item:</b> 10	<b>Survey Conducted Date:</b> 6/15/2011
<b>Customer:</b> BILL BARRETT CORPORATION E-BILL		<b>Job Type (BOM):</b> CMT SURFACE CASING BOM
<b>Customer Representative:</b> JOSH HENDERSON		<b>API / UWI: (leave blank if unknown)</b> 05-045-19646
<b>Well Name:</b> KAUFMAN		<b>Well Number:</b> 23B-24-692
<b>Well Type:</b> Development Well	<b>Well Country:</b> United States of America	
<b>H2S Present:</b> No	<b>Well State:</b> Colorado	<b>Well County:</b> Garfield

Dear Customer,

We hope that you were satisfied with the service quality of this job performed by Halliburton. It is the aim of our management and service personnel to deliver equipment and service of a standard unmatched in the service sector of the energy industry.

Please take the time to let us know if our performance met with your satisfaction. Please be as critical as possible to ensure we constantly improve our service. Your comments are of great value to us and are intended for the exclusive use of Halliburton.

### CUSTOMER SATISFACTION SURVEY

CATEGORY	CUSTOMER SATISFACTION RESPONSE	
Survey Conducted Date	The date the survey was conducted	6/15/2011
Survey Interviewer	The survey interviewer is the person who initiated the survey.	CRAIG KUKUS (HX19742)
Customer Participation	Did the customer participate in this survey? (Y/N)	Yes
Customer Representative	Enter the Customer representative name	JOSH HENDERSON
HSE	Was our HSE performance satisfactory? Circle Y or N	Yes
Equipment	Were you satisfied with our Equipment? Circle Y or N	Yes
Personnel	Were you satisfied with our people? Circle Y or N	Yes
Customer Comment	Customer's Comment	
Job DVA	Did we provide job DVA above our normal service today? Circle Y or N	No
Time	Please enter hours in decimal format to nearest quarter hour.	
Other	Enter short text for other efficiencies gained.	
Customer Initials	Customer's Initials	
Please provide details	Please describe how the job efficiencies were gained.	

CUSTOMER SIGNATURE

<b>Sales Order #:</b> 8235673	<b>Line Item:</b> 10	<b>Survey Conducted Date:</b> 6/15/2011
<b>Customer:</b> BILL BARRETT CORPORATION E-BILL		<b>Job Type (BOM):</b> CMT SURFACE CASING BOM
<b>Customer Representative:</b> JOSH HENDERSON		<b>API / UWI: (leave blank if unknown)</b> 05-045-19646
<b>Well Name:</b> KAUFMAN		<b>Well Number:</b> 23B-24-692
<b>Well Type:</b> Development Well	<b>Well Country:</b> United States of America	
<b>H2S Present:</b> No	<b>Well State:</b> Colorado	<b>Well County:</b> Garfield

*KEY PERFORMANCE INDICATORS*

General	
<b>Survey Conducted Date</b> The date the survey was conducted	6/15/2011

Cementing KPI Survey	
<b>Type of Job</b> Select the type of job. (Cementing or Non-Cementing)	0
<b>Select the Maximum Deviation range for this Job</b> What is the highest deviation for the job you just completed? This may not be the maximum well deviation.	Vertical
<b>Total Operating Time (hours)</b> Total Operating Hours Including Rig-up, Pumping, Rig-down. Enter in decimal format.	3.5
<b>HSE Incident, Accident, Injury</b> HSE Incident, Accident, Injury. This should be recordable incidents only.	No
<b>Was the job purpose achieved?</b> Was the job delivered correctly as per customer agreed design?	Yes
<b>Operating Hours (Pumping Hours)</b> Total number of hours pumping fluid on this job. Enter in decimal format.	1
<b>Customer Non-Productive Rig Time (hrs)</b> Lost time due to Halliburton in the start, execution, or completion of an ordered service or product, or delays in a follow-on service. Enter in decimal format. 0 if none.	0
<b>Type of Rig Classification Job Was Performed</b> Type Of Rig (classification) Job Was Performed On	Drilling Rig (Portable)
<b>Number Of JSAs Performed</b> Number Of Jsas Performed	6
<b>Number of Unplanned Shutdowns</b> Unplanned shutdown is when injection stops for any period of time.	0
<b>Was this a Primary Cement Job (Yes / No)</b>	Yes

<b>Sales Order #:</b> 8235673	<b>Line Item:</b> 10	<b>Survey Conducted Date:</b> 6/15/2011
<b>Customer:</b> BILL BARRETT CORPORATION E-BILL		<b>Job Type (BOM):</b> CMT SURFACE CASING BOM
<b>Customer Representative:</b> JOSH HENDERSON		<b>API / UWI: (leave blank if unknown)</b> 05-045-19646
<b>Well Name:</b> KAUFMAN		<b>Well Number:</b> 23B-24-692
<b>Well Type:</b> Development Well	<b>Well Country:</b> United States of America	
<b>H2S Present:</b> No	<b>Well State:</b> Colorado	<b>Well County:</b> Garfield

Primary Cement Job= Casing job, Liner job, or Tie-back job.	
<b>Did We Run Wiper Plugs?</b> Did We Run Top And Bottom Casing Wiper Plugs?	Top
<b>Mixing Density of Job Stayed in Designed Density Range (0-100%)</b> Density Range defined as +/- .20 ppg. Calculation: Total BBLs cement mixed at designed density divided by total BBLs of cement multiplied by 100	98
<b>Was Automated Density Control Used?</b> Was Automated Density Control (ADC) Used ?	Yes
<b>Pump Rate (percent) of Job Stayed At Designed Pump Rate</b> Pump Rate range defined as +/- 1bbl/min. Calculation: Total BBLs of fluid pumped at the designed rate divided by Total BBLs of fluid pumped, multiplied by 100	98
<b>Nbr of Remedial Sqz Jobs Rqd - Competition</b> Number Of Remedial Squeeze Jobs Required After Primary Job Performed By Competition	0
<b>Nbr of Remedial Plug Jobs Rqd - HES</b> Number Of Remedial Plug Jobs Needed After Primary Plug Pumped By HES	0
<b>Nbr of Remedial Sqz Jobs Rqd - HES</b> Number Of Remedial Squeeze Jobs Required After Primary Job Performed By HES	0