

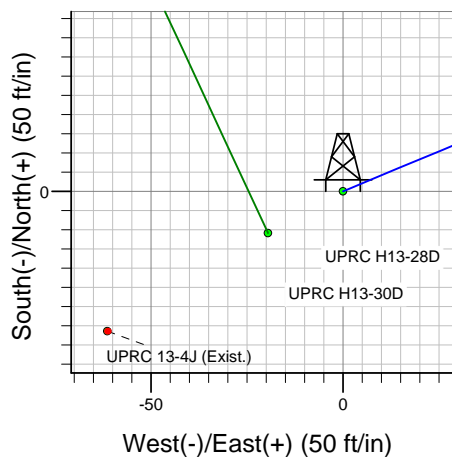
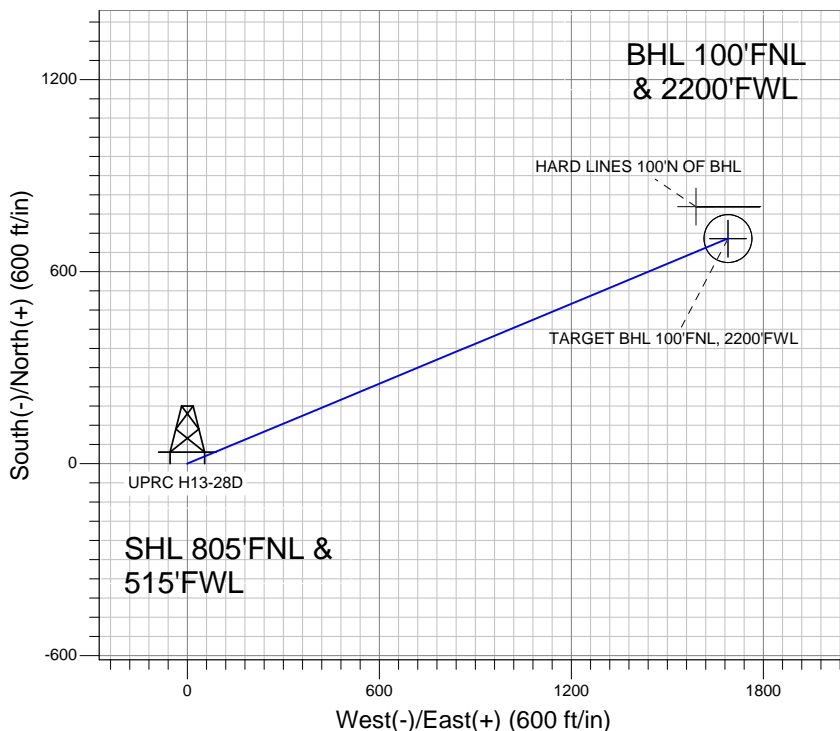
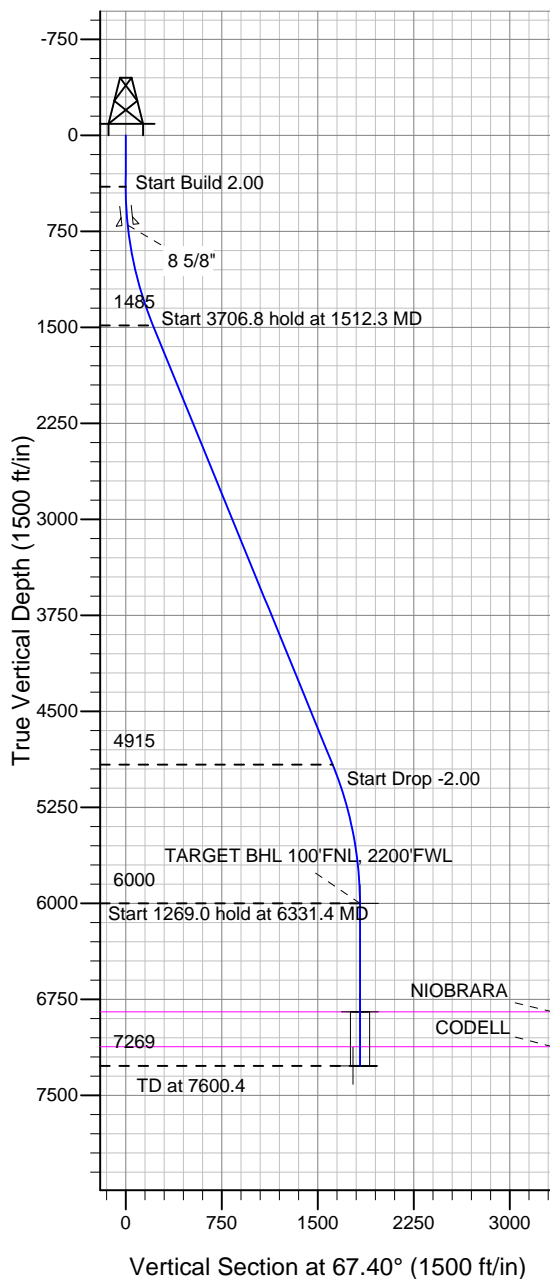
Well Name: UPRC H13-28D

Surface Location: UPRC H13-30D Pad Sec.13-T3N-R65W
 North American Datum 1983, US State Plane 1983 Colorado Northern Zone
 Ground Elevation: 4841.0

+N/-S	+E/-W	Northing	Easting	Latitude	Longitude	Slot
0.0	0.0	1327936.52	3245961.27	40.230230	-104.619060	

Original Well EleWELL @ 4854.0ft (Original Well Elev)

NOBLE ENERGY INC WELD COUNTY CO



UPRC H13-30D Pad Sec.13-T3N-R65W
 UPRC H13-28D
 Noble UPRC H13-28D Plan #1 (10-18-11)
 15:12, October 20 2011



Azimuths to True North
 Magnetic North: 8.72°
 Magnetic Field
 Strength: 53021.7snT
 Dip Angle: 66.93°
 Date: 10/18/2011
 Model: IGRF2010

WELLBORE TARGET DETAILS (LAT/LONG)

Name	TVD	+N/-S	+E/-W	Latitude	Longitude	Shape
TARGET BHL 100'FNL, 2200'FWL	6000.0	703.2	1689.2	40.232160	-104.613010	Point
TARGET CIRCLE 100'FNL & 2200'FWL	6848.0	703.2	1689.2	40.232160	-104.613010	Circle (Radius: 75.0)
HARD LINES 100'N OF BHL	7269.0	803.2	1589.2	40.232435	-104.613368	Polygon

SECTION DETAILS

Sec	MD	Inc	Azi	TVD	+N/-S	+E/-W	DLeg	TFace	VSec	Target
1	0.0	0.00	0.00	0.0	0.0	0.0	0.00	0.00	0.0	
2	400.0	0.00	0.00	400.0	0.0	0.0	0.00	0.00	0.0	
3	1512.3	22.25	67.40	1484.5	81.9	196.8	2.00	67.40	213.2	
4	5219.1	22.25	67.40	4915.5	621.2	1492.4	0.00	0.00	1616.5	
5	6331.4	0.00	0.00	6000.0	703.2	1689.2	2.00	180.00	1829.7	TARGET BHL 100'FNL, 2200'FWL
6	7600.4	0.00	0.00	7269.0	703.2	1689.2	0.00	0.00	1829.7	