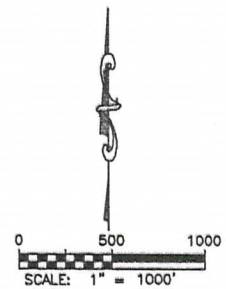
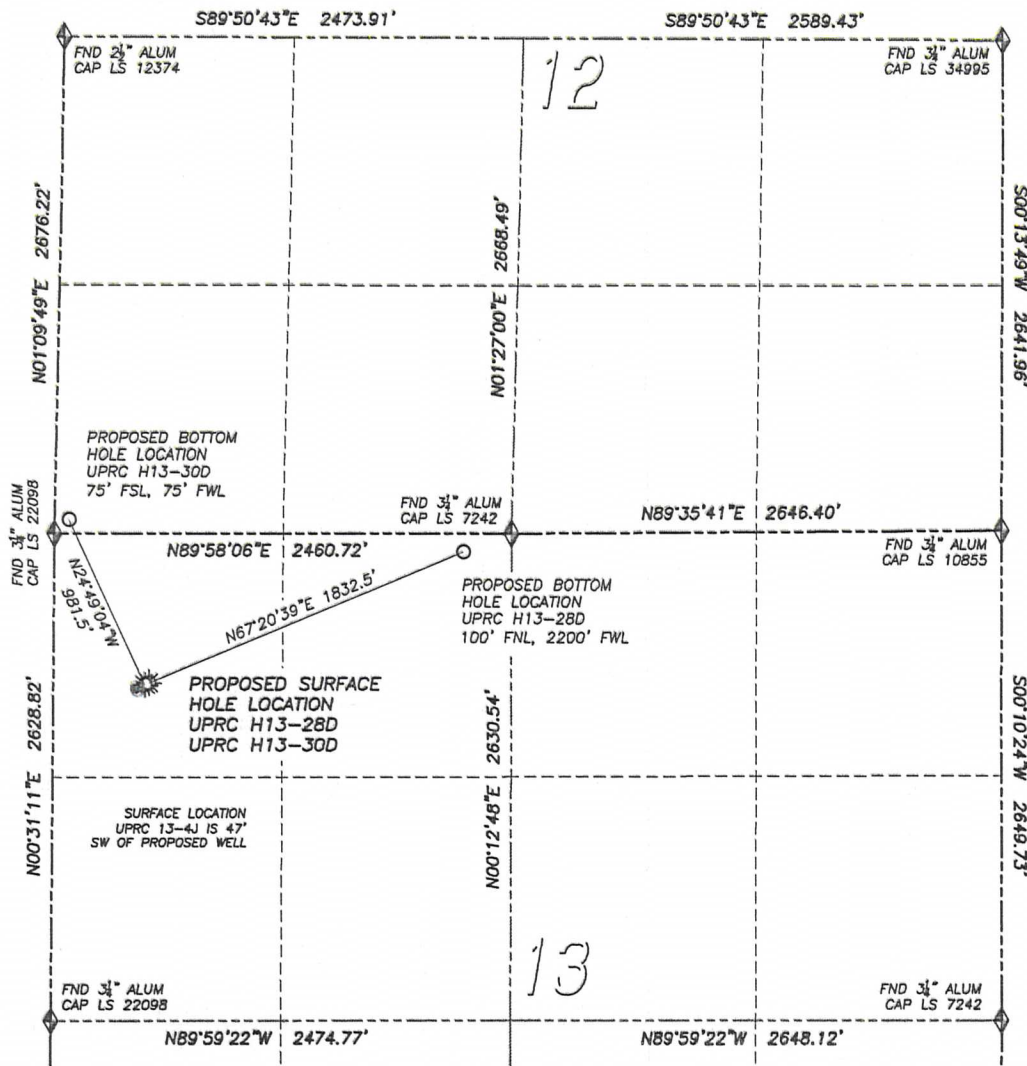







303 953 9841

MULTI-WELL PAD DIRECTIONAL LAYOUT
UPRC H13-28D & UPRC H13-30D

SECTION 13, TOWNSHIP 3 NORTH, RANGE 65 WEST OF THE 6TH PRINCIPAL MERIDIAN



LEGEND

-  FOUND MONUMENT
 AS DESCRIBED
 PROPOSED WELL
 EXISTING WELL
 BOTTOM HOLE
 ABANDONED WELL

NAD 83 LATITUDE AND LONGITUDE

UPRC H13-28D SURFACE HOLE:

LATITUDE: N40.23023°

LONGITUDE: W104.61906°

ELEVATION: 4841'

FOOTAGE: 805' FNL, 515' FWL

PDOP:

QTR/QTR: NW4/NW4

PROP LINE: 510'± SOUTH

BOTTOM HOLE:

LATITUDE: N40.23216°

LATITUDE: N40.25210
LONGITUDE: W104.61301'

FOOTAGE: 100' FNL, 2200' FWL,

NEAREST EXISTING WELL:

UPRC 13-4J SURFACE HOLE

LATITUDE: N40.23013°

LONGITUDE: W104.61928°

ELEVATION: 4840'

69' SOUTHWEST

NAD 83 LATITUDE AND LONGITUDE

UPRC H13-30D SURFACE HOLE:

LATITUDE: N40.23020°

LONGITUDE: W104.61913°

ELEVATION: 4841'

FOOTAGE: 816' FNL, 496' FWL

PDOP: 1.5

QTR/QTR: NW4/NW4

PROP LINE: 496'± WEST

BOTTOM HOLE:

LATITUDE: N40.23264°

LONGITUDE: W104.62061°

FOOTAGE: 75' FSL, 75' FWL,
OF SECTION 12

NEAREST EXISTING WELL:

UPRC 13-4J SURFACE HOLE

LATITUDE: N40.23013°

LONGITUDE: W104.61928°

ELEVATION: 4840'

47' SOUTHWEST

DALEY LAND SURVEYING, INC. PARKER, CO. 80134 303 953 9841

MULTI-WELL PAD LOCATION DRAWING UPRC H13-28D & UPRC H13-30D

SECTION 13, TOWNSHIP 3 NORTH, RANGE 65 WEST OF THE 6TH PRINCIPAL MERIDIAN

