

HALLIBURTON

BILL BARRETT CORPORATION E-BILL

**KAUFMAN 23A-24-692
MAMM CREEK
Garfield County , Colorado**

Cement Surface Casing
17-Jun-2011

Post Job Report

The Road to Excellence Starts with Safety

Sold To #: 343492	Ship To #: 2858924	Quote #:	Sales Order #: 8235672
Customer: BILL BARRETT CORPORATION E-BILL		Customer Rep: South, Jody	
Well Name: KAUFMAN	Well #: 23A-24-692	API/UWI #: 05-045-19651	
Field: MAMM CREEK	City (SAP): SILT	County/Parish: Garfield	State: Colorado
Lat: N 39.51 deg. OR N 39 deg. 30 min. 37.444 secs.		Long: W 107.615 deg. OR W -108 deg. 23 min. 6.893 secs.	
Contractor: PATTERSON 307	Rig/Platform Name/Num: PATTERSON 307		
Job Purpose: Cement Surface Casing			
Well Type: Development Well		Job Type: Cement Surface Casing	
Sales Person: METLI, MARSHALL		Srvc Supervisor: KUKUS, CRAIG	MBU ID Emp #: 369124

Job Personnel

HES Emp Name	Exp Hrs	Emp #	HES Emp Name	Exp Hrs	Emp #	HES Emp Name	Exp Hrs	Emp #
BECK, MICHAEL George	12	489151	KUKUS, CRAIG A	12	369124	WYCKOFF, RYAN Scott	12	476117

Equipment

HES Unit #	Distance-1 way	HES Unit #	Distance-1 way	HES Unit #	Distance-1 way	HES Unit #	Distance-1 way
10784080	120 mile	10804579	120 mile	10829469	120 mile	10872429	120 mile
11360883	120 mile						

Job Hours

Date	On Location Hours	Operating Hours	Date	On Location Hours	Operating Hours	Date	On Location Hours	Operating Hours
6/17/11	12	3						

TOTAL Total is the sum of each column separately

Job

Job Times

Formation Name	Date	Time	Time Zone
Formation Depth (MD) Top	Bottom	Called Out	17 - Jun - 2011 05:01 MST
Form Type	BHST	On Location	17 - Jun - 2011 12:30 MST
Job depth MD	850. ft	Job Started	17 - Jun - 2011 14:08 MST
Water Depth	Wk Ht Above Floor	Job Completed	17 - Jun - 2011 14:53 MST
Perforation Depth (MD) From	To	Departed Loc	17 - Jun - 2011 18:00 MST

Well Data

Description	New / Used	Max pressure psig	Size in	ID in	Weight lbm/ft	Thread	Grade	Top MD ft	Bottom MD ft	Top TVD ft	Bottom TVD ft
-------------	------------	-------------------	---------	-------	---------------	--------	-------	-----------	--------------	------------	---------------

Sales/Rental/3rd Party (HES)

Description	Qty	Qty uom	Depth	Supplier
PLUG,CMTG, TOP, 9 5/8, HWE, 8.16 MIN/9.06 MA	1	EA		

Tools and Accessories

Type	Size	Qty	Make	Depth	Type	Size	Qty	Make	Depth	Type	Size	Qty	Make
Guide Shoe					Packer					Top Plug	9 5/8	1	HES
Float Shoe					Bridge Plug					Bottom Plug			
Float Collar					Retainer					SSR plug set			
Insert Float										Plug Container	9 5/8	1	HES
Stage Tool										Centralizers			

Miscellaneous Materials

Gelling Agt	Conc	Surfactant	Conc	Acid Type	Qty	Conc	%
Treatment Fld	Conc	Inhibitor	Conc	Sand Type	Size	Qty	

Fluid Data

Stage/Plug #: 1													
Fluid #	Stage Type	Fluid Name	Qty	Qty uom	Mixing Density lbm/gal	Yield ft ³ /sk	Mix Fluid Gal/sk	Rate bbl/min	Total Mix Fluid Gal/sk				

Stage/Plug #: 1

Stage/Plug #: 1										
Fluid #	Stage Type	Fluid Name	Qty	Qty uom	Mixing Density lbm/gal	Yield ft ³ /sk	Mix Fluid Gal/sk	Rate bbl/min	Total Mix Fluid Gal/sk	
1	Water Spacer		20.00	bbl	.	.0	.0	4		
2	Lead Cement	VERSACEM (TM) SYSTEM (452010)	120.0	sacks	12.3	2.38	13.77	4	13.77	
	13.77 Gal	FRESH WATER								
3	Tail Cement	SWIFTCEM (TM) SYSTEM (452990)	120.0	sacks	14.2	1.43	6.85	4	6.85	
	6.85 Gal	FRESH WATER								
4	Displacement		61.00	bbl	.	.0	.0	6		
Calculated Values			Pressures			Volumes				
Displacement	62	Shut In: Instant		Lost Returns	0	Cement Slurry	135.3	Pad		
Top Of Cement		5 Min		Cement Returns	0	Actual Displacement	62	Treatment		
Frac Gradient		15 Min		Spacers	20	Load and Breakdown		Total Job	217	
Rates										
Circulating	NONE	Mixing	4	Displacement	6	Avg. Job	5			
Cement Left In Pipe	Amount	44.10ft	Reason	Shoe Joint						
Frac Ring # 1 @	ID	Frac ring # 2 @	ID	Frac Ring # 3 @	ID	Frac Ring # 4 @	ID			
The Information Stated Herein Is Correct				Customer Representative Signature						

The Road to Excellence Starts with Safety

Sold To #: 343492	Ship To #: 2858924	Quote #:	Sales Order #: 8235672
Customer: BILL BARRETT CORPORATION E-BILL		Customer Rep: South, Jody	
Well Name: KAUFMAN		Well #: 23A-24-692	API/UWI #: 05-045-19651
Field: MAMM CREEK	City (SAP): SILT	County/Parish: Garfield	State: Colorado
Legal Description:			
Lat: N 39.51 deg. OR N 39 deg. 30 min. 37.444 secs.		Long: W 107.615 deg. OR W -108 deg. 23 min. 6.893 secs.	
Contractor: PATTERSON 307		Rig/Platform Name/Num: PATTERSON 307	
Job Purpose: Cement Surface Casing			Ticket Amount:
Well Type: Development Well		Job Type: Cement Surface Casing	
Sales Person: METLI, MARSHALL		Srvc Supervisor: KUKUS, CRAIG	MBU ID Emp #: 369124

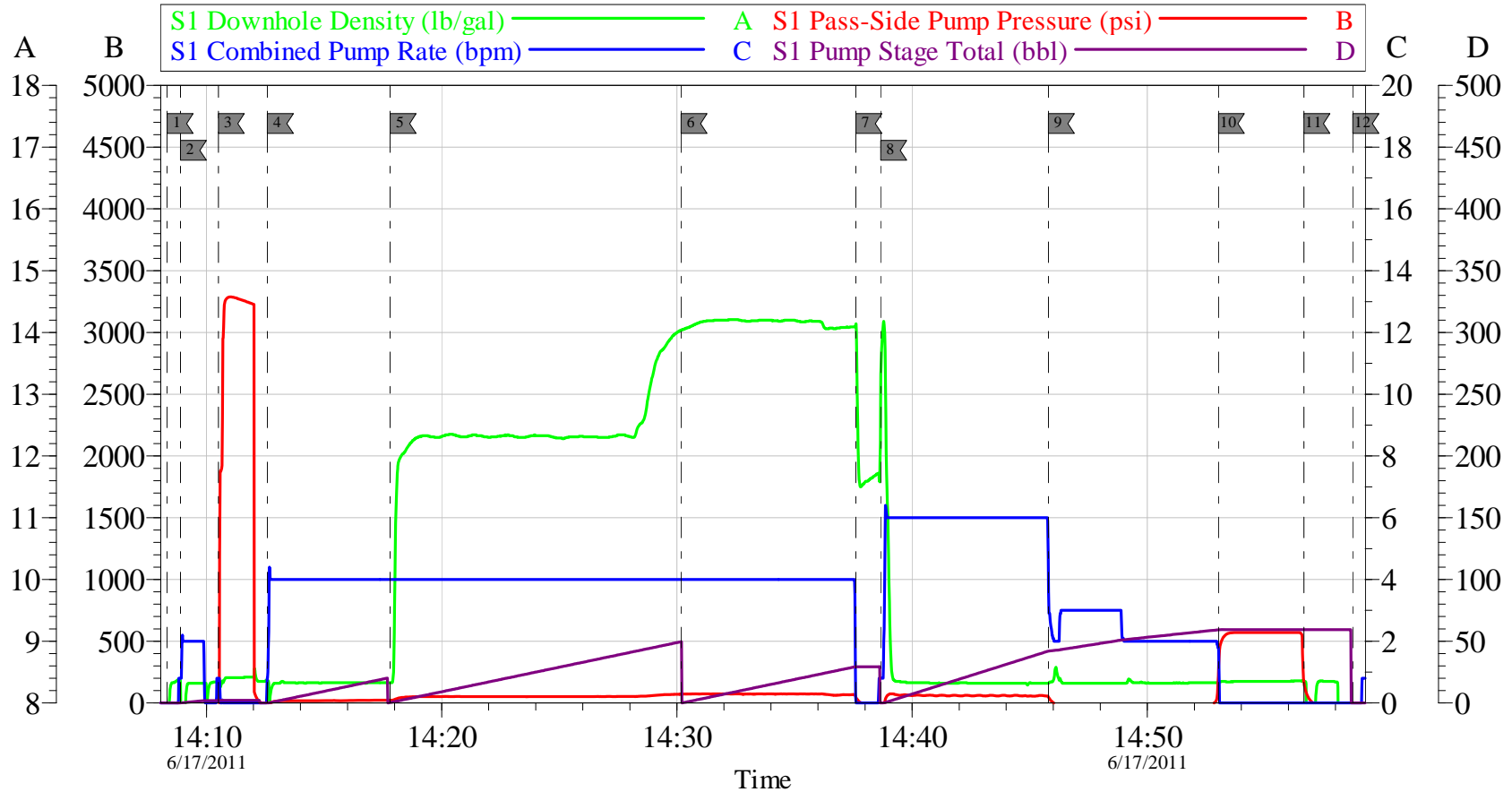
Activity Description	Date/Time	Cht #	Rate bbl/min	Volume bbl		Pressure psig		Comments
				Stage	Total	Tubing	Casing	
Call Out	06/17/2011 05:01							CREW STAYED ON LOCATION FOR NEXT JOB
Depart Yard Safety Meeting	06/17/2011 10:00							SAFETY MEETING INVOLVING THE ENTIRE CMT CREW / CEMENT LEFT HES LOCTION
Arrive At Loc	06/17/2011 12:30							RIG WAS RUNNING CSG
Assessment Of Location Safety Meeting	06/17/2011 12:45							ASSESSMENT OF LOCATION INVOLVING THE ENTIRE CMT CREW
Circulate Well	06/17/2011 13:00							RIG DONE RUNNING CSG/NO CIRCULATION/DRILLE R SAID THEY HIT WATER AT 660 FT
Pre-Rig Up Safety Meeting	06/17/2011 13:15							SAFETY MEETING INVOLVING THE ENTIRE CMT CREW
Rig-Up Equipment	06/17/2011 13:30							RESET HEAD / RIG IRON TO HEAD
Pre-Job Safety Meeting	06/17/2011 13:50							SAFETY MEETING INVOLVING EVERYONE ON LOCATION
Start Job	06/17/2011 14:08							TD 850 FT TP 836.58 FT SJ 44.10 FT OH 12 1/4 IN MUD WT 8.3# PIPE 9 5/8 IN J-55
Other	06/17/2011 14:08		2	2			14.0	FILL LINES FRESH WATER
Pressure Test	06/17/2011 14:10		0.5			3500.0		PRESSURE TEST GOOD

Activity Description	Date/Time	Cht #	Rate bbl/min	Volume bbl		Pressure psig		Comments
				Stage	Total	Tubing	Casing	
Pump Spacer 1	06/17/2011 14:12		4	20			33.0	FRESH WATER SPACER
Pump Lead Cement	06/17/2011 14:17		4	50.8			83.0	PUMP 120 SKS LEAD CEMENT AT 12.3 PPG 2.38 Y 13.77 GAL/SK
Pump Tail Cement	06/17/2011 14:30		4	30.5			89.0	PUMP 120 SKS TAIL CEMENT AT 14.2 PPG 1.43 Y 6.85 GAL/SK
Shutdown	06/17/2011 14:37							HAD NO RETURNS THRU OUT CEMENT
Drop Top Plug	06/17/2011 14:37							PLUG LEFT THE PLUG CONTAINER
Pump Displacement	06/17/2011 14:38		6	61.3			78.0	PUMP H2O DISPLACEMENT
Slow Rate	06/17/2011 14:45		3	40			15.0	SLOWED RATE AT 40 BBLS GONE / AT 50 BBLS GONE SLOWED TO 2 BBLS / NO RETURNS / NO CEMENT TO SURFACE
Bump Plug	06/17/2011 14:53		2	61			596.0	PLUG LANDED AT 245 PSI
Check Floats	06/17/2011 14:56							FLOATS HELD / GOT .5 BBLS BACK TO TANKS AND SHUT IN WELL / NO CEMENT TO SURFACE
Start Job	06/17/2011 16:03							RIGGED UP TO PUMP TOP OUT
Other	06/17/2011 16:05		1	0.5				PRIME LINES
Pump Cement	06/17/2011 16:06		2	54			53.0	PUMP 154 SKS TOP OUT CEMENT AT 12.5 PPG 1.97 Y 10.96 GAL/SK
End Job	06/17/2011 16:33							DID NOT GET CEMENT TO SURFACE / CO-MAN SAID WERE DONE
Shutdown	06/17/2011 16:33							SHUT DOWN AND CLEAN UP / RIG DOWN
Pre-Rig Down Safety Meeting	06/17/2011 16:40							SAFETY MEETING INVOLVING THE ENTIRE CMT CREW
Rig-Down Equipment	06/17/2011 16:45							HEAD WAS LEFT ON WELL / WILL HAVE TO BE PICKED UP LATER

Activity Description	Date/Time	Cht #	Rate bbl/ min	Volume bbl		Pressure psig		Comments
				Stage	Total	Tubing	Casing	
Safety Meeting - Departing Location	06/17/2011 17:45							SAFETY MEETING INVOLVING THE ENTIRE CMT CREW
Comment	06/17/2011 18:00							THANK YOU FOR USING HALLIBURTON, CRAIG KUKUS AND CREW

BARRETT

SURFACE KAUFMAN 23A-24-692



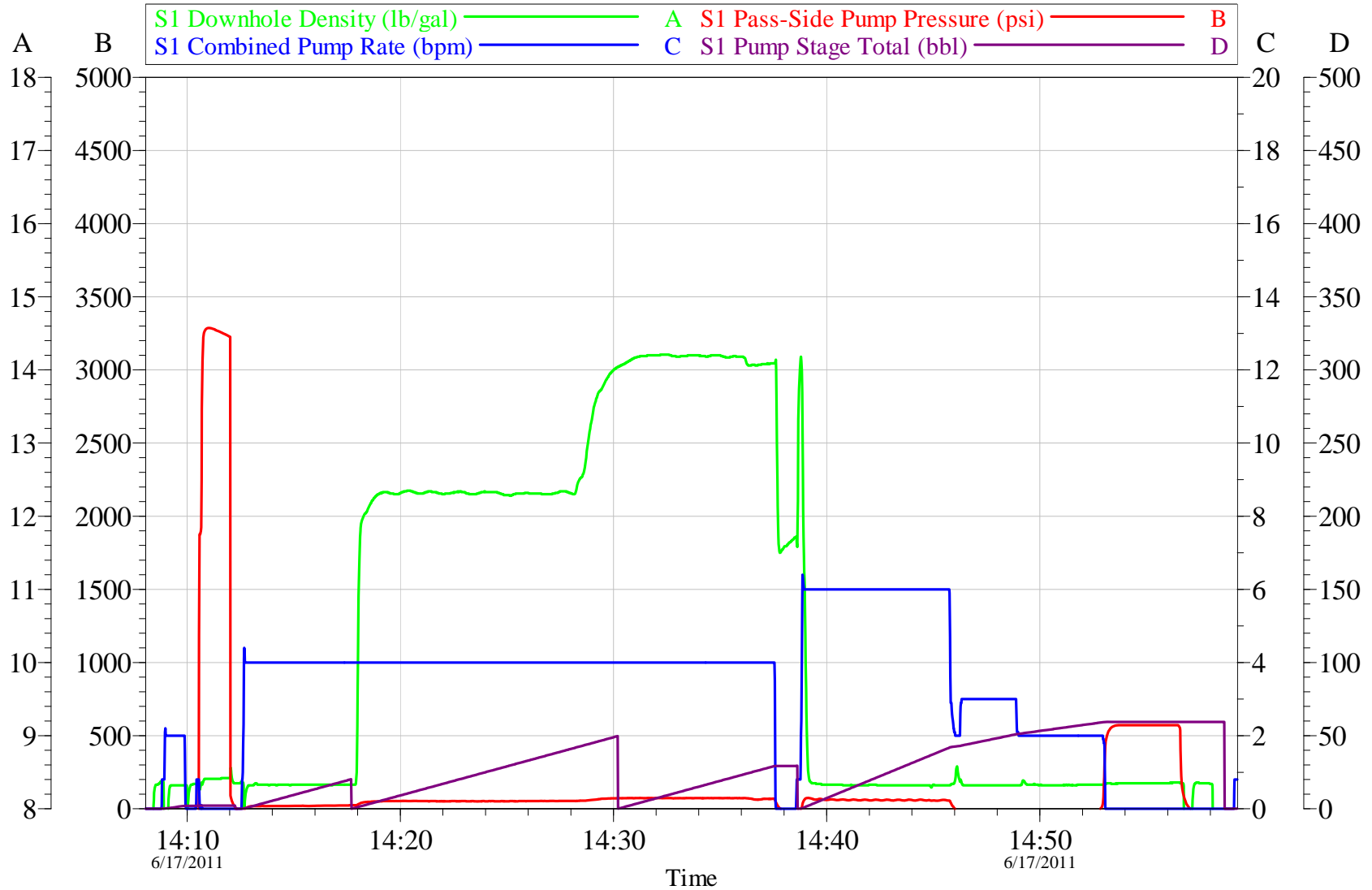
Local Event Log			
1 START JOB	14:08:20	2 PRIME LINES	14:08:54
3 PRESSURE TEST	14:10:30	4 PUMP H2O SPACER	14:12:35
5 PUMP LEAD CEMENT	14:17:49	6 PUMP TAIL CEMENT	14:30:11
7 SHUT DOWN/DROP PLUG	14:37:37	8 PUMP H2O DISPLACEMENT	14:38:40
9 SLOW RATE	14:45:48	10 BUMP PLUG	14:53:01
11 CHECK FLOATS	14:56:40	12 END JOB	14:58:44

Customer: BARRETT	Job Date: 17-Jun-2011	Sales Order #: 8235672
Well Description: KAUFMAN 23A-24-692	Job Type: SURFACE	ADC Used: YES
Company Rep: JOSH HENDERSON	Cement Supervisor: CRAIGKUKUS	Elite #/Operator: ELITE 7 RYAN WYCKOFF

OptiCem v6.4.8
17-Jun-11 15:08

BARRETT

SURFACE KAUFMAN 23A-24-692

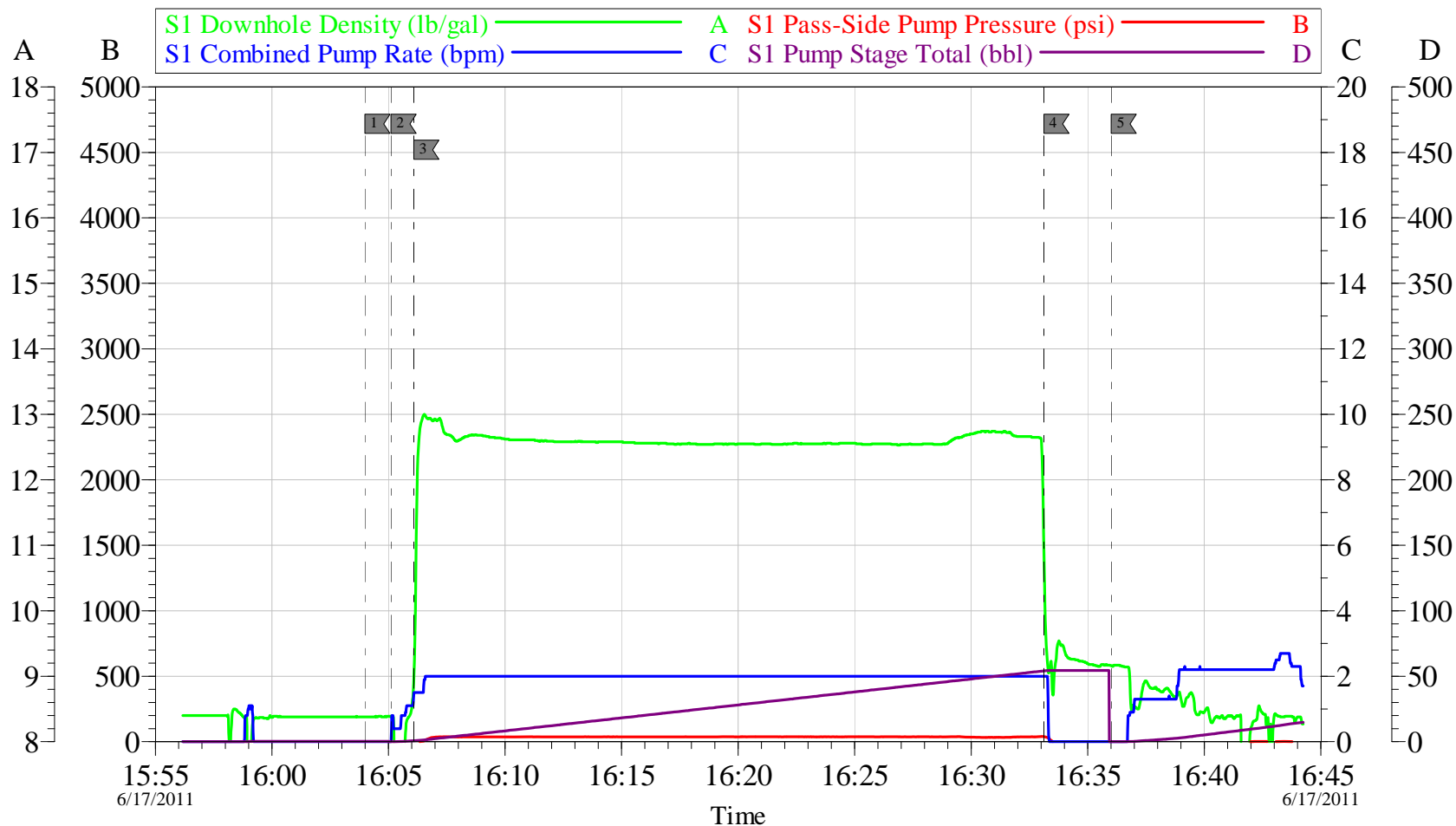


Customer: BARRETT	Job Date: 17-Jun-2011	Sales Order #: 8235672
Well Description: KAUFMAN 23A-24-692	Job Type: SURFACE	ADC Used: YES
Company Rep: JOSH HENDERSON	Cement Supervisor: CRAIGKUKUS	Elite #/Operator: ELITE 7 RYAN WYCKOFF

OptiCem v6.4.8
17-Jun-11 15:15

BARRETT

TOP OUT KAUFMAN23A-24-692



Local Event Log			
1	START JOB	16:03:59	2
2	PRIME LINES	16:05:06	3
3	PUMP CEMENT	16:06:05	
4	SHUT DOWN	16:33:07	5
5	CLEAN UP	16:36:01	

Customer: BARRETT	Job Date: 17-Jun-2011	Sales Order #: 8235672
Well Description: KAUFMAN 23A-24-692	Job Type: TOP OUT	ADC Used: YES
Company Rep: JOSH HENDERSON	Cement Supervisor: CRAIG KUKUS	Elite #/Operator: ELITE 7 RYAN WYCKOFF

OptiCem v6.4.8
17-Jun-11 17:00

EVENT #	EVENT	VOLUME	SACKS	WEIGHT	YIELD	GAL/ SK
1	Start Job		MAX			
	FILL LINES	2				
6	Test Lines	3500.0				
9	H2O Spacer	20.0		8.3		
13	LEAD CEMENT	50.8	120	12.3	2.38	13.75
15	TAIL CEMENT	30.5	120	14.2	1.43	6.85
	SHUTDOWN					
	DROP TOP PLUG					
25	H2O DISPLACE	61.3		8.3		
	SLOW RATE	40.0		slow	2BBL	
	LAND PLUG	218.0	PLUS	500	OVER	
	CHECK FLOATS					
	END JOB		Do Not Overdisplace			
DISPLACEMENT	TOTAL PIPE	SHOE JOINT LENGTH		FLOAT COLLAR	BBL/FT	H2O REQ.
61.30	836.58	44.10		792.48	.0773	200
PSI TO LIFT	363	*****Use Mud Scales on Each Tier*****				
Total Displacement	61.30					
CALCULATED PSI LAND		218	TOTAL FLUID PUMPED		163	
Collapse	2020	Burst	3520		SO#	8235672

HALLIBURTON

Water Analysis Report

Company: BARRETT
Submitted by: CRAIGKUKUS
Attention: _____
Lease KAUFMAN
Well # 24A-24-692

Date: 6/17/2011
Date Rec.: 6/17/2011
S.O.# 8235672
Job Type: SURFACE

Specific Gravity	<i>MAX</i>	
pH	<i>8</i>	<i>7</i>
Potassium (K)	<i>5000</i>	<i>250</i> Mg / L
Calcium (Ca)	<i>500</i>	<i>0</i> Mg / L
Iron (FE2)	<i>300</i>	<i>0</i> Mg / L
Chlorides (Cl)	<i>3000</i>	<i>0</i> Mg / L
Sulfates (SO ₄)	<i>1500</i>	<i>below200</i> Mg / L
Chlorine (Cl ₂)		<i>120</i> Mg / L
Temp	<i>40-80</i>	<i>65</i> Deg
Total Dissolved Solids		<i>240</i> Mg / L

Respectfully: CRAIGKUKUS

Title: CEMENTING SUPERVISOR

Location: GRANDJUNCTION CO

NOTICE:

This report is limited to the described sample tested. Any person using or relying on this report agrees that Halliburton shall not be liable for any loss or damage whether due to act or omission resulting from such report or

Sales Order #: 8235672	Line Item: 10	Survey Conducted Date: 6/17/2011
Customer: BILL BARRETT CORPORATION E-BILL		Job Type (BOM): CMT SURFACE CASING BOM
Customer Representative: JOSH HENDERSON		API / UWI: (leave blank if unknown) 05-045-19651
Well Name: KAUFMAN		Well Number: 23A-24-692
Well Type: Development Well	Well Country: United States of America	
H2S Present:	Well State: Colorado	Well County: Garfield

Dear Customer,

We hope that you were satisfied with the service quality of this job performed by Halliburton. It is the aim of our management and service personnel to deliver equipment and service of a standard unmatched in the service sector of the energy industry.

Please take the time to let us know if our performance met with your satisfaction. Please be as critical as possible to ensure we constantly improve our service. Your comments are of great value to us and are intended for the exclusive use of Halliburton.

CUSTOMER SATISFACTION SURVEY

CATEGORY	CUSTOMER SATISFACTION RESPONSE	
Survey Conducted Date	The date the survey was conducted	6/17/2011
Survey Interviewer	The survey interviewer is the person who initiated the survey.	CRAIG KUKUS (HX19742)
Customer Participation	Did the customer participate in this survey? (Y/N)	Yes
Customer Representative	Enter the Customer representative name	JOSH HENDERSON
HSE	Was our HSE performance satisfactory? Circle Y or N	Yes
Equipment	Were you satisfied with our Equipment? Circle Y or N	Yes
Personnel	Were you satisfied with our people? Circle Y or N	Yes
Customer Comment	Customer's Comment	
Job DVA	Did we provide job DVA above our normal service today? Circle Y or N	No
Time	Please enter hours in decimal format to nearest quarter hour.	
Other	Enter short text for other efficiencies gained.	
Customer Initials	Customer's Initials	
Please provide details	Please describe how the job efficiencies were gained.	

CUSTOMER SIGNATURE

Sales Order #: 8235672	Line Item: 10	Survey Conducted Date: 6/17/2011
Customer: BILL BARRETT CORPORATION E-BILL		Job Type (BOM): CMT SURFACE CASING BOM
Customer Representative: JOSH HENDERSON		API / UWI: (leave blank if unknown) 05-045-19651
Well Name: KAUFMAN		Well Number: 23A-24-692
Well Type: Development Well	Well Country: United States of America	
H2S Present:	Well State: Colorado	Well County: Garfield

KEY PERFORMANCE INDICATORS

General	
Survey Conducted Date	6/17/2011
The date the survey was conducted	

Cementing KPI Survey	
Type of Job	0
Select the type of job. (Cementing or Non-Cementing)	
Select the Maximum Deviation range for this Job	Vertical
What is the highest deviation for the job you just completed? This may not be the maximum well deviation.	
Total Operating Time (hours)	4
Total Operating Hours Including Rig-up, Pumping, Rig-down. Enter in decimal format.	
HSE Incident, Accident, Injury	No
HSE Incident, Accident, Injury. This should be recordable incidents only.	
Was the job purpose achieved?	Yes
Was the job delivered correctly as per customer agreed design?	
Operating Hours (Pumping Hours)	3
Total number of hours pumping fluid on this job. Enter in decimal format.	
Customer Non-Productive Rig Time (hrs)	0
Lost time due to Halliburton in the start, execution, or completion of an ordered service or product, or delays in a follow-on service. Enter in decimal format. 0 if none.	
Type of Rig Classification Job Was Performed	Drilling Rig (Portable)
Type Of Rig (classification) Job Was Performed On	
Number Of JSAs Performed	6
Number Of Jsas Performed	
Number of Unplanned Shutdowns	0
Unplanned shutdown is when injection stops for any period of time.	
Was this a Primary Cement Job (Yes / No)	Yes

Sales Order #: 8235672	Line Item: 10	Survey Conducted Date: 6/17/2011
Customer: BILL BARRETT CORPORATION E-BILL		Job Type (BOM): CMT SURFACE CASING BOM
Customer Representative: JOSH HENDERSON		API / UWI: (leave blank if unknown) 05-045-19651
Well Name: KAUFMAN		Well Number: 23A-24-692
Well Type: Development Well	Well Country: United States of America	
H2S Present:	Well State: Colorado	Well County: Garfield

Primary Cement Job= Casing job, Liner job, or Tie-back job.	
Did We Run Wiper Plugs? Did We Run Top And Bottom Casing Wiper Plugs?	Top
Mixing Density of Job Stayed in Designed Density Range (0-100%) Density Range defined as +/- .20 ppg. Calculation: Total BBLs cement mixed at designed density divided by total BBLs of cement multiplied by 100	98
Was Automated Density Control Used? Was Automated Density Control (ADC) Used ?	Yes
Pump Rate (percent) of Job Stayed At Designed Pump Rate Pump Rate range defined as +/- 1bbl/min. Calculation: Total BBLs of fluid pumped at the designed rate divided by Total BBLs of fluid pumped, multiplied by 100	98
Nbr of Remedial Sqz Jobs Rqd - Competition Number Of Remedial Squeeze Jobs Required After Primary Job Performed By Competition	0
Nbr of Remedial Plug Jobs Rqd - HES Number Of Remedial Plug Jobs Needed After Primary Plug Pumped By HES	0
Nbr of Remedial Sqz Jobs Rqd - HES Number Of Remedial Squeeze Jobs Required After Primary Job Performed By HES	0