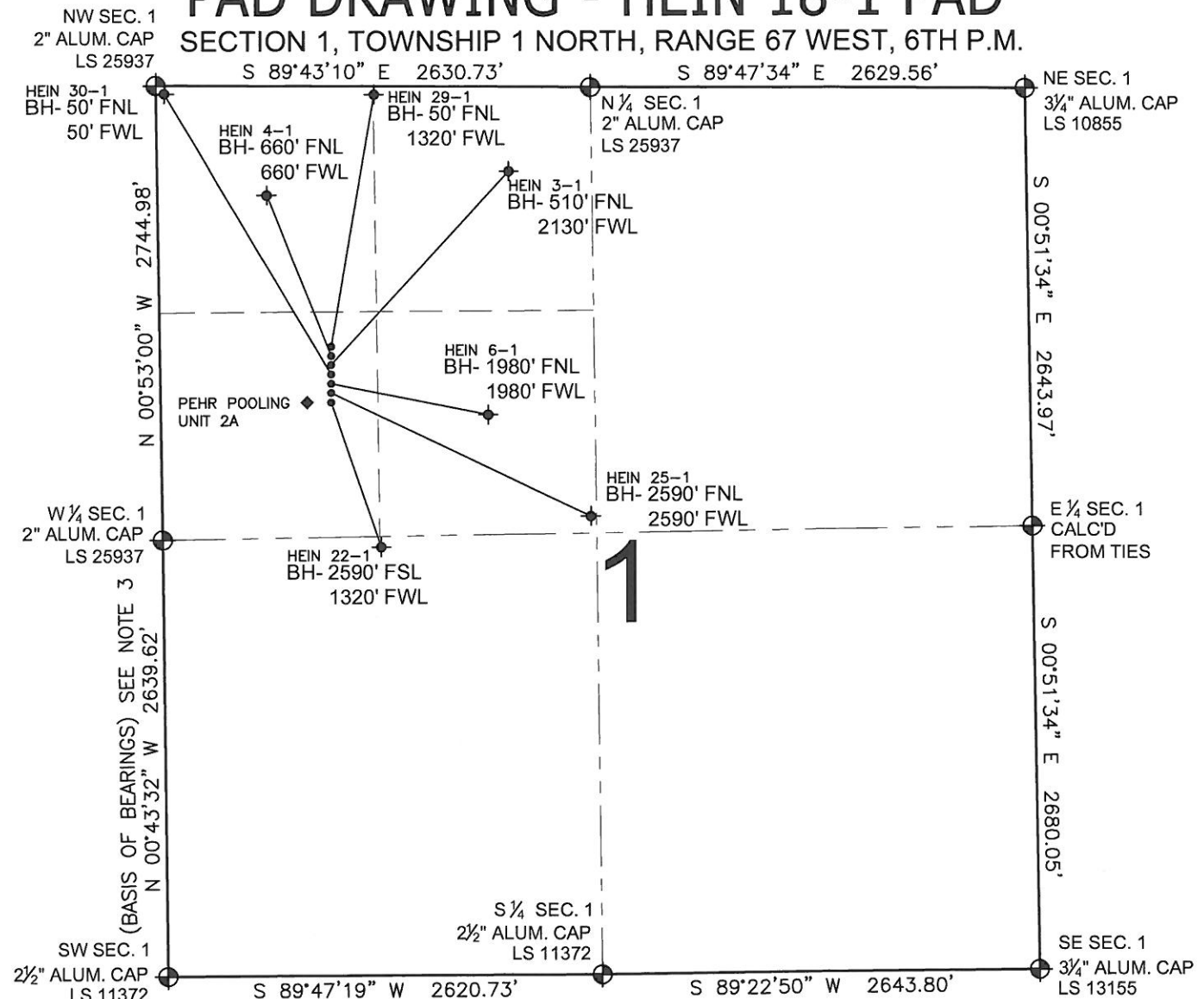


PAD DRAWING - HEIN 18-1 PAD

SECTION 1, TOWNSHIP 1 NORTH, RANGE 67 WEST, 6TH P.M.



LEGEND

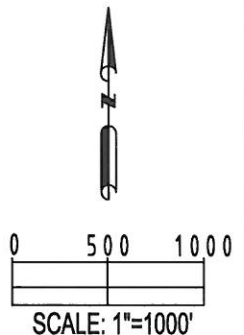
- = EXISTING MONUMENT
 = BOTTOM HOLE
 BH= BOTTOM HOLE
 = PROPOSED WELL
 = EXISTING WELL

NOTES:

- THIS SURVEY WAS DONE BY GPS METHODS AND CONFORMS TO THE MINIMUM STANDARDS SET BY THE C.O.G.C.C., RULE NO. 215
- ELEVATIONS SHOWN AT THE WELL HEAD, AS WELL AS HORIZONTAL CONTROL, ARE BASED ON GPS-RTK VALUES DERIVED FROM DOING 2-HOUR STATIC GPS SESSIONS AND REDUCTIONS USING O.P.U.S. SOLUTIONS.
VERTICAL = NAVD88; HORIZONTAL = NAD83/92
- THE BEARINGS SHOWN HEREON ARE BASED ON GPS OBSERVATIONS BETWEEN THE MONUMENTS SHOWN HEREON AS FOUND ON THE FIELD DATE BELOW.
- DISTANCES SHOWN ARE AT GROUND LEVEL, AS MEASURED IN THE FIELD, WITH TIES TO WELLS MEASURED AT A PERPENDICULAR TO SECTION LINES.

NOTES:

HEIN 29-1 TO BE AT 1709' FNL, 1032' FWL.
 BOTTOM HOLE AT 50' FNL & 1320' FWL.
 HEIN 4-1 TO BE AT 1719' FNL, 1032' FWL.
 BOTTOM HOLE AT 660' FNL & 660' FWL.
 HEIN 3-1 TO BE AT 1729' FNL, 1032' FWL.
 BOTTOM HOLE AT 510' FNL & 2130' FWL.
 HEIN 30-1 TO BE AT 1739' FNL, 1032' FWL.
 BOTTOM HOLE AT 50' FNL & 50' FWL.
 HEIN 6-1 TO BE AT 1749' FNL, 1032' FWL.
 BOTTOM HOLE AT 1980' FNL & 1980' FWL.
 HEIN 25-1 TO BE AT 1759' FNL, 1032' FWL.
 BOTTOM HOLE AT 2590' FNL & 2590' FWL.
 HEIN 22-1 TO BE AT 1769' FNL, 1032' FWL.
 BOTTOM HOLE AT 2590' FNL & 1320' FWL.
 PEHR POOLING UNIT 2A IS AT 1769' FNL & 985' FWL.



REVISIONS

INITIAL	DATE
SMF	12-08-10

PREPARED BY:

PFS

Petroleum Field Services, LLC
1801 W. 13th Ave.
Denver, CO 80204



KERR-MCGEE OIL & GAS ONSHORE LP

FIELD DATE:
11-23-10

DRAWING DATE:
11-26-10

BY:
TJN

PAD NAME:

HEIN 18-1 PAD

SURFACE LOCATION:

WELD COUNTY, COLORADO
SW 1/4 NW 1/4, SEC. 1, T1N, R67W