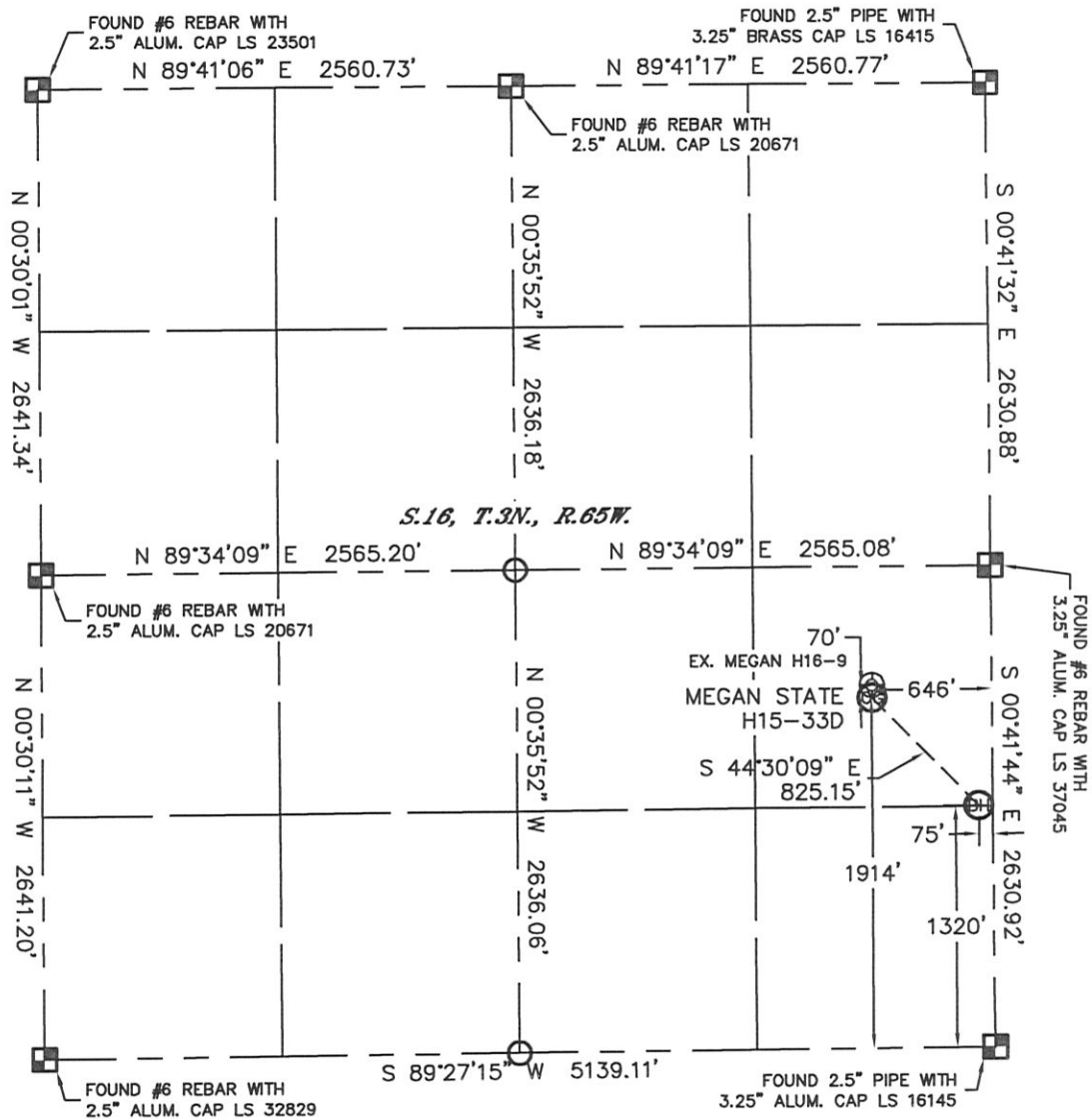


WELL LOCATION CERTIFICATE

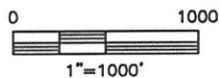
SECTION: 16
TOWNSHIP: 3N
RANGE: 65W

THIS MAP DOES NOT REPRESENT A BOUNDARY SURVEY



In accordance with a request from Ryan Hawkins with Noble Energy Inc. Lat40°, Inc. has determined the surface location of the MEGAN STATE H15-33D to be 1914' from the SOUTH line and 646' from the EAST line and the bottom hole to be 1320' from the SOUTH line and 75' from the EAST line as measured at right angles from the section lines of Section 16, Township 3 North, Range 65 West of the Sixth Principal Meridian, County of Weld, State of Colorado.

I hereby state that this Well Location Certificate was prepared by me, or under my direct supervision, that the fieldwork was completed on 9/16/11, for and on behalf of Noble Energy Inc. That this is not a Land Survey Plat or an Improvement Survey Plat, and that it is not to be relied upon for establishment of fence, building, or other future improvement lines.



NOTE:

- 1) Bearings shown are Grid Bearings of the Colorado State Plane Coordinate System, North Zone, North American Datum 1983/2007. The lineal dimensions as contained herein are based upon the "U.S. Survey Foot."
- 2) Ground elevations are based on an observed GPS elevation (NAVD 1988 DATUM).
- 3) NEAREST EXISTING WELL: MEGAN H16-9, 70'
- 4) IMPROVEMENTS: See LOCATION DRAWING for all visible improvements within 400' of disturbed area.
- 5) SURFACE USE: RANGELAND/EX. WELL SITE
- 6) INSTRUMENT OPERATOR: ADAM KELLY

SURFACE LOCATION
LATITUDE: 40.22342°N
LONGITUDE: 104.66169°W
PDOP: 1.9
ELEV: 4818'
1/4, 1/4: NE1/4SE1/4
NEAREST PROPERTY LINE: 646' E

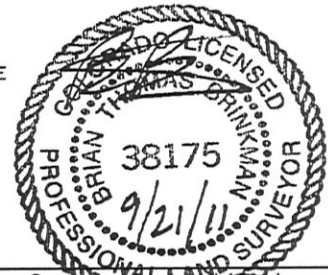
BOTTOM HOLE
LATITUDE: 40.22179°N
LONGITUDE: 104.65964°W

NOTE

According to Colorado law, you must commence any legal action based upon any defect in this W.L.C. within three years after you discover such defect. In no event, may any action based upon any defect in this survey be commenced more than ten years after the date of the certificate shown hereon. (13-80-105 C.R.S.)

LEGEND

- = ALIQUOT MONUMENT AS DESCRIBED
- = CALCULATED POSITION



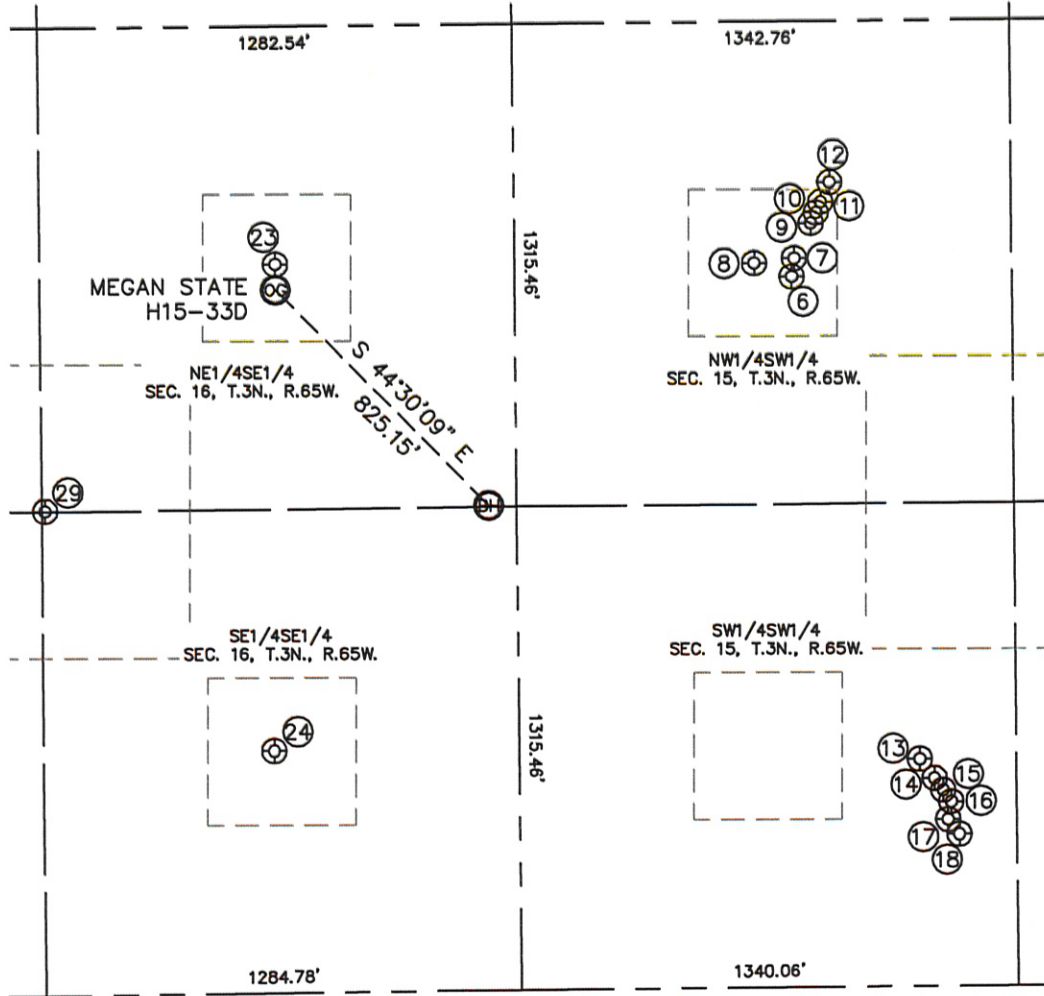
Brian T. Brinkman—On behalf of Lat40°, Inc.
Colorado Licensed Professional
Land Surveyor No. 38175

PROJECT#: 2011237

SITE SKETCH

MEGAN STATE H15-33D

SECTION: 16
TOWNSHIP: 3N
RANGE: 65W



⑥

FRICO 20-15
NW1/4SW1/4
1936' FSL
749' FWL
LAT-40.22348°N
LONG-104.65670°W
PDOP: 1.4
ELEV: 4803'

⑦

FRICO 19-15
NW1/4SW1/4
1986' FSL
756' FWL
LAT-40.22362°N
LONG-104.65667°W
PDOP: 1.9
ELEV: 4803'

⑧

HSR-FRICO 12-15
NW1/4SW1/4
1973' FSL
648' FWL
LAT-40.22358°N
LONG-104.65706°W
PDOP: 1.4
ELEV: 4805'

⑨

FRICO 11-15
NW1/4SW1/4
2081' FSL
802' FWL
LAT-40.22388°N
LONG-104.65651°W
PDOP: 1.4
ELEV: 4803'

⑩

FRICO 10-15
NW1/4SW1/4
2110' FSL
816' FWL
LAT-40.22396°N
LONG-104.65646°W
PDOP: 1.1
ELEV: 4803'

⑪

FRICO 9-15
NW1/4SW1/4
2139' FSL
829' FWL
LAT-40.22404°N
LONG-104.65641°W
PDOP: 1.9
ELEV: 4803'

⑫

FRICO 22-15
NW1/4SW1/4
2193' FSL
853' FWL
LAT-40.22418°N
LONG-104.65632°W
PDOP: 1.1
ELEV: 4803'

⑬

FRICO 23-15
SW1/4SW1/4
619' FSL
1081' FWL
LAT-40.21986°N
LONG-104.65549°W
PDOP: 1.5
ELEV: 4804'

⑭

FRICO 14-15
SW1/4SW1/4
567' FSL
1120' FWL
LAT-40.21972°N
LONG-104.65536°W
PDOP: 1.5
ELEV: 4803'

⑮

FRICO 15-15
SW1/4SW1/4
534' FSL
1143' FWL
LAT-40.21963°N
LONG-104.65527°W
PDOP: 1.5
ELEV: 4803'

⑯

FRICO 16-15
SW1/4SW1/4
503' FSL
1164' FWL
LAT-40.21954°N
LONG-104.65519°W
PDOP: 1.2
ELEV: 4803'

⑰

FRICO 36-15
SW1/4SW1/4
454' FSL
1155' FWL
LAT-40.21941°N
LONG-104.65523°W
PDOP: 1.5
ELEV: 4803'

⑱

FRICO 37-15
SW1/4SW1/4
414' FSL
1186' FWL
LAT-40.21929°N
LONG-104.65512°W
PDOP: 2.2
ELEV: 4803'

⑳

MEGAN H16-9
NE1/4SE1/4
1983' FSL
646' FEL
LAT-40.22361°N
LONG-104.66169°W
PDOP: 2.0
ELEV: 4815'

㉑

MEGAN H16-16
SE1/4SE1/4
660' FSL
662' FEL
LAT-40.21998°N
LONG-104.66173°W
PDOP: 1.3
ELEV: 4815'

㉒

MEGAN H16-4J
NE1/4SE1/4
1318' FSL
1275' FEL
LAT-40.22179°N
LONG-104.66393°W
PDOP: 1.6
ELEV: 4822'

