

## DRILL STEM TEST REPORT

Prepared For: **Mull Drilling Co, Inc**

1700 N Waterfront Pkwy B #1200  
Wichita, KS 67206

ATTN: Mac Armstrong

### **APC Medford State1-9**

### **9-18s-46w Cheyenne,CO**

Start Date: 2011.10.31 @ 22:20:00

End Date: 2011.11.01 @ 05:15:30

Job Ticket #: 44500                      DST #: 1

Trilobite Testing, Inc

PO Box 362 Hays, KS 67601

ph: 785-625-4778 fax: 785-625-5620

Printed: 2011.11.10 @ 11:09:34



**TRILOBITE  
TESTING, INC**

## DRILL STEM TEST REPORT

Mull Drilling Co, Inc

1700 N Waterfront Pkwy B #1200  
Wichita, KS 67206

ATTN: Mac Armstrong

**9-18s-46w Cheyenne, CO**

**APC Medford State 1-9**

Job Ticket: 44500

**DST#: 1**

Test Start: 2011.10.31 @ 22:20:00

### GENERAL INFORMATION:

Formation: **Ft Scott**

Deviated: No Whipstock: ft (KB)

Time Tool Opened: 00:49:15

Time Test Ended: 05:15:30

Test Type: Conventional Bottom Hole (Initial)

Tester: Bradley Walter

Unit No: 40

**Interval: 4533.00 ft (KB) To 4574.00 ft (KB) (TVD)**

Total Depth: 4574.00 ft (KB) (TVD)

Hole Diameter: 7.88 inches Hole Condition: Good

Reference Elevations: 4213.00 ft (KB)

4202.00 ft (CF)

KB to GR/CF: 11.00 ft

**Serial #: 8652 Inside**

Press @ Run Depth: 22.65 psig @ 4534.00 ft (KB)

Start Date: 2011.10.31

End Date:

2011.11.01

Start Time: 22:20:05

End Time:

05:15:29

Capacity: 8000.00 psig

Last Calib.: 2011.11.01

Time On Btm: 2011.11.01 @ 00:49:00

Time Off Btm: 2011.11.01 @ 03:01:30

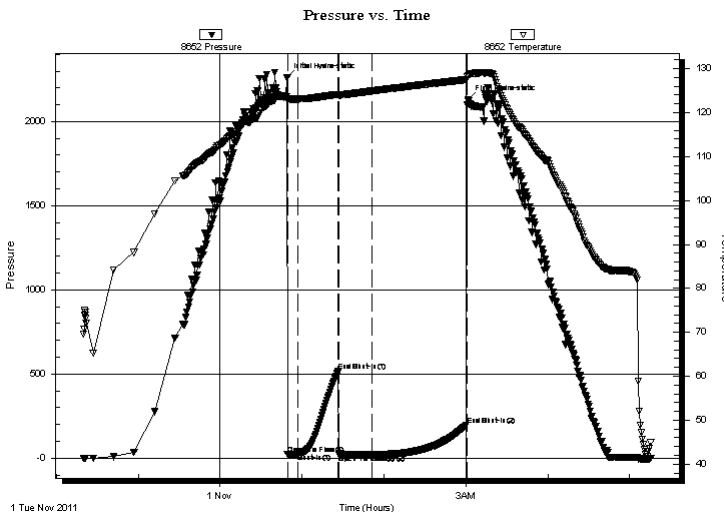
TEST COMMENT: IF: Surface blow .

IS: No return.

FF: No blow .

FS: No return.

### PRESSURE SUMMARY



Time (Min.)	Pressure (psig)	Temp (deg F)	Annotation
0	2262.57	123.71	Initial Hydro-static
1	23.71	122.69	Open To Flow (1)
8	25.49	123.10	Shut-In(1)
38	516.03	124.17	End Shut-In(1)
38	23.65	123.97	Open To Flow (2)
62	22.65	124.91	Shut-In(2)
132	195.87	127.51	End Shut-In(2)
133	2130.51	128.28	Final Hydro-static

### Recovery

Length (ft)	Description	Volume (bbl)
5.00	Mud 100m	0.02

### Gas Rates

	Choke (inches)	Pressure (psig)	Gas Rate (Mcf/d)
--	----------------	-----------------	------------------



**TRILOBITE**  
**TESTING, INC**

## DRILL STEM TEST REPORT

**TOOL DIAGRAM**

Mull Drilling Co, Inc

**9-18s-46w Cheyenne, CO**

1700 N Waterfront Pkwy B #1200  
Wichita, KS 67206

**APC Medford State1-9**

Job Ticket: 44500

**DST#: 1**

ATTN: Mac Armstrong

Test Start: 2011.10.31 @ 22:20:00

### Tool Information

Drill Pipe:	Length: 4353.00 ft	Diameter: 3.80 inches	Volume: 61.06 bbl	Tool Weight: 2500.00 lb
Heavy Wt. Pipe:	Length: 0.00 ft	Diameter: 0.00 inches	Volume: 0.00 bbl	Weight set on Packer: 25000.00 lb
Drill Collar:	Length: 182.00 ft	Diameter: 2.25 inches	Volume: 0.90 bbl	Weight to Pull Loose: 73000.00 lb
		Total Volume:	61.96 bbl	Tool Chased 0.00 ft
Drill Pipe Above KB:	30.00 ft			String Weight: Initial 60000.00 lb
Depth to Top Packer:	4533.00 ft			Final 60000.00 lb
Depth to Bottom Packer:	ft			
Interval between Packers:	41.00 ft			
Tool Length:	69.00 ft			
Number of Packers:	2	Diameter: 6.75 inches		
Tool Comments:				

Tool Description	Length (ft)	Serial No.	Position	Depth (ft)	Accum. Lengths
------------------	-------------	------------	----------	------------	----------------

Change Over Sub	1.00			4506.00	
Shut In Tool	5.00			4511.00	
Hydraulic tool	5.00			4516.00	
Jars	5.00			4521.00	
Safety Joint	2.00			4523.00	
Packer	5.00			4528.00	28.00 Bottom Of Top Packer
Packer	5.00			4533.00	
Stubb	1.00			4534.00	
Recorder	0.00	8652	Inside	4534.00	
Recorder	0.00	8360	Outside	4534.00	
Perforations	4.00			4538.00	
Change Over Sub	1.00			4539.00	
Drill Pipe	31.00			4570.00	
Change Over Sub	1.00			4571.00	
Bullnose	3.00			4574.00	41.00 Bottom Packers & Anchor

**Total Tool Length: 69.00**



**TRILOBITE**  
**TESTING, INC**

## DRILL STEM TEST REPORT

### FLUID SUMMARY

Mull Drilling Co, Inc

**9-18s-46w Cheyenne, CO**

1700 N Waterfront Pkwy B #1200  
Wichita, KS 67206

**APC Medford State1-9**

Job Ticket: 44500

**DST#: 1**

ATTN: Mac Armstrong

Test Start: 2011.10.31 @ 22:20:00

### Mud and Cushion Information

Mud Type: Gel Chem

Cushion Type:

Oil API:

0 deg API

Mud Weight: 9.00 lb/gal

Cushion Length:

ft

Water Salinity:

0 ppm

Viscosity: 52.00 sec/qt

Cushion Volume:

bbl

Water Loss: 7.91 in<sup>3</sup>

Gas Cushion Type:

Resistivity: ohm.m

Gas Cushion Pressure:

psig

Salinity: 1900.00 ppm

Filter Cake: 1.00 inches

### Recovery Information

Recovery Table

Length ft	Description	Volume bbl
5.00	Mud 100m	0.025

Total Length: 5.00 ft

Total Volume: 0.025 bbl

Num Fluid Samples: 0

Num Gas Bombs: 0

Serial #:

Laboratory Name:

Laboratory Location:

Recovery Comments:

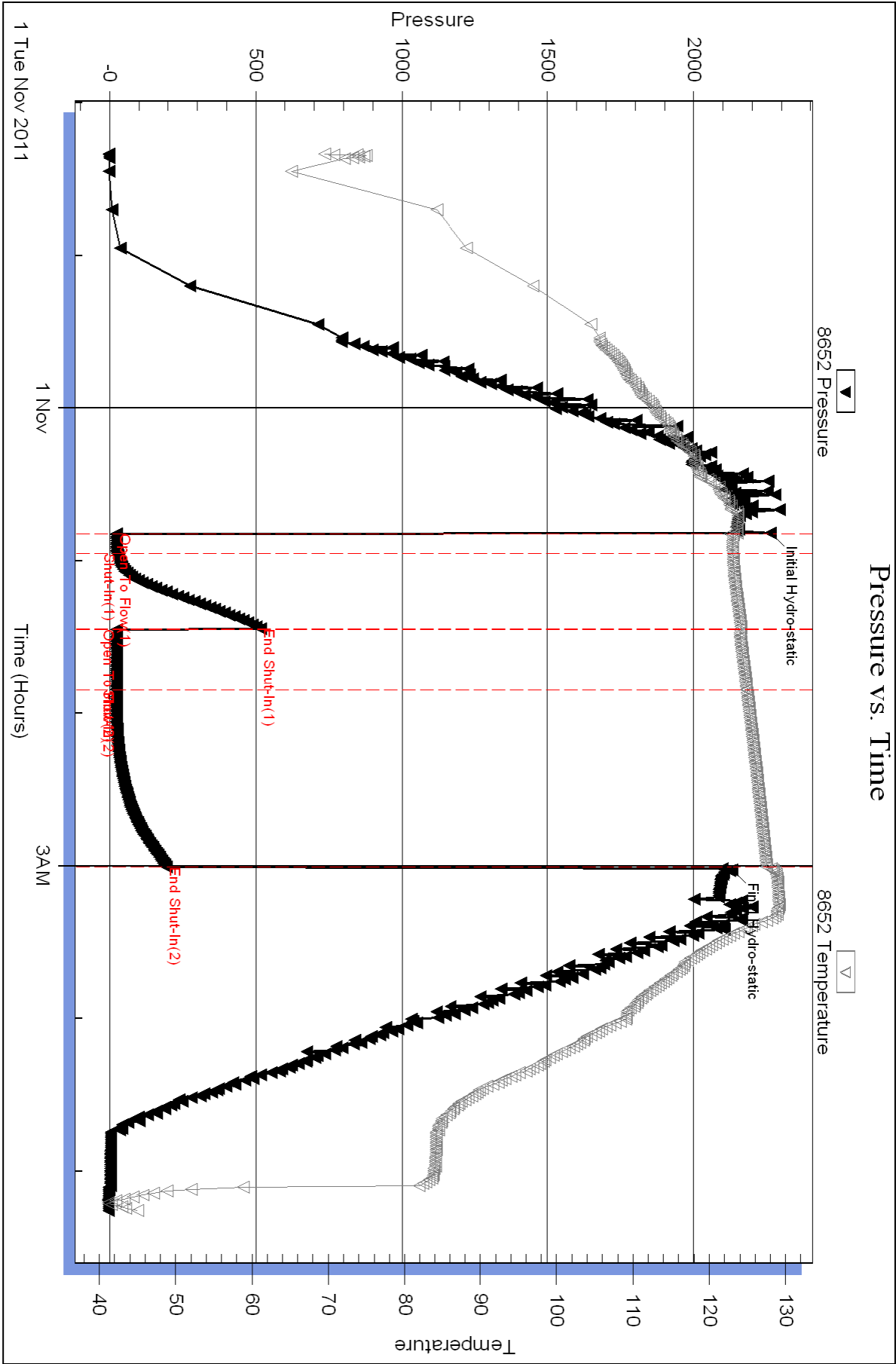
Serial #: 8652

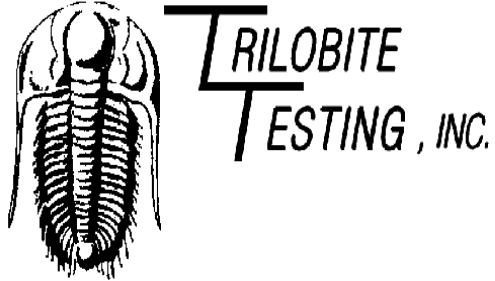
Inside

Mull Drilling Co., Inc

APC Medford State-1-9

DST Test Number: 1





## DRILL STEM TEST REPORT

Prepared For: **Mull Drilling Co, Inc**

1700 N Waterfront Pkwy B #1200  
Wichita, KS 67206

ATTN: Mac Armstrong

### **APC Medford State1-9**

### **9-18s-46w Cheyenne,CO**

Start Date: 2011.11.04 @ 03:33:15

End Date: 2011.11.04 @ 11:01:00

Job Ticket #: 45326                      DST #: 2

Trilobite Testing, Inc

PO Box 362 Hays, KS 67601

ph: 785-625-4778 fax: 785-625-5620

Printed: 2011.11.10 @ 11:10:30

Mull Drilling Co, Inc

9-18s-46w Cheyenne,CO

APC Medford State1-9

DST # 2

Miss-St.Gen.

2011.11.04



**TRILOBITE  
TESTING, INC.**

## DRILL STEM TEST REPORT

Mull Drilling Co, Inc

1700 N Waterfront Pkwy B #1200  
Wichita, KS 67206

ATTN: Mac Armstrong

**9-18s-46w Cheyenne, CO**

**APC Medford State 1-9**

Job Ticket: 45326

**DST#: 2**

Test Start: 2011.11.04 @ 03:33:15

### GENERAL INFORMATION:

Formation: **Miss-St.Gen.**

Deviated: No Whipstock: ft (KB)

Time Tool Opened: 06:34:15

Time Test Ended: 11:01:00

Test Type: Conventional Bottom Hole (Reset)

Tester: Mike Roberts

Unit No: 48

**Interval: 5136.00 ft (KB) To 5230.00 ft (KB) (TVD)**

Total Depth: 5230.00 ft (KB) (TVD)

Hole Diameter: 7.88 inches Hole Condition: Good

Reference Elevations: 4213.00 ft (KB)

4202.00 ft (CF)

KB to GR/CF: 11.00 ft

**Serial #: 6668 Outside**

Press @ Run Depth: 82.36 psig @ 5137.00 ft (KB)

Start Date: 2011.11.04

End Date:

2011.11.04

Start Time: 03:33:15

End Time:

11:01:00

Capacity: 8000.00 psig

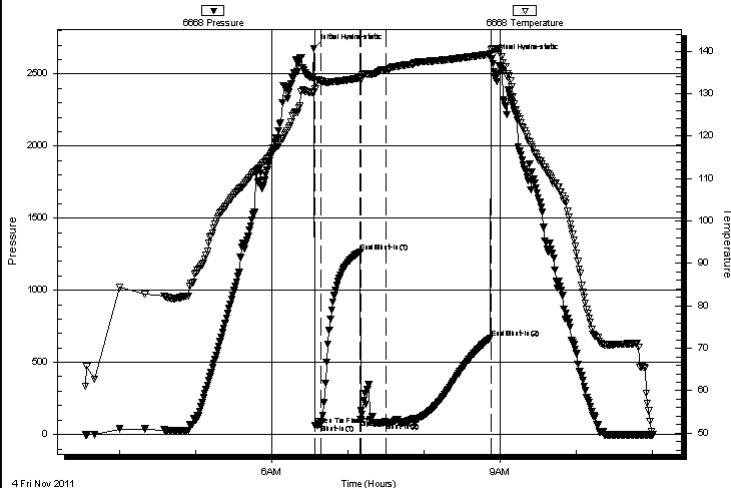
Last Calib.: 2011.11.04

Time On Btm: 2011.11.04 @ 06:33:15

Time Off Btm: 2011.11.04 @ 08:53:15

**TEST COMMENT:** IF: Built to weak surface blow and died in 3 min  
IS: No return blow  
FF: Built to surface blow and died in 6 min.  
FS: No return blow

Pressure vs. Time



PRESSURE SUMMARY

Time (Min.)	Pressure (psig)	Temp (deg F)	Annotation
0	2677.56	130.30	Initial Hydro-static
1	63.85	131.05	Open To Flow (1)
6	72.28	132.88	Shut-In (1)
37	1268.05	133.69	End Shut-In (1)
37	102.16	133.08	Open To Flow (2)
57	82.36	135.58	Shut-In (2)
140	670.09	139.28	End Shut-In (2)
140	2604.32	140.23	Final Hydro-static

Recovery

Length (ft)	Description	Volume (bbl)
60.00	mud w ith oil spots	0.30

Gas Rates

	Choke (inches)	Pressure (psig)	Gas Rate (Mcf/d)
--	----------------	-----------------	------------------

\* Recovery from multiple tests



**TRILOBITE**  
**TESTING, INC.**

## DRILL STEM TEST REPORT

### TOOL DIAGRAM

Mull Drilling Co, Inc

**9-18s-46w Cheyenne, CO**

1700 N Waterfront Pkwy B #1200  
Wichita, KS 67206

**APC Medford State1-9**

Job Ticket: 45326

**DST#: 2**

ATTN: Mac Armstrong

Test Start: 2011.11.04 @ 03:33:15

### Tool Information

Drill Pipe:	Length: 4956.00 ft	Diameter: 3.80 inches	Volume: 69.52 bbl	Tool Weight: 2500.00 lb
Heavy Wt. Pipe:	Length: 0.00 ft	Diameter: 0.00 inches	Volume: 0.00 bbl	Weight set on Packer: 20000.00 lb
Drill Collar:	Length: 182.00 ft	Diameter: 2.25 inches	Volume: 0.90 bbl	Weight to Pull Loose: 70000.00 lb
		Total Volume:	70.42 bbl	Tool Chased 0.00 ft
Drill Pipe Above KB:	30.00 ft			String Weight: Initial 63000.00 lb
Depth to Top Packer:	5136.00 ft			Final 63000.00 lb
Depth to Bottom Packer:	ft			
Interval between Packers:	94.00 ft			
Tool Length:	122.00 ft			
Number of Packers:	2	Diameter: 6.75 inches		
Tool Comments:				

### Tool Description

Tool Description	Length (ft)	Serial No.	Position	Depth (ft)	Accum. Lengths
Change Over Sub	1.00			5109.00	
Shut In Tool	5.00			5114.00	
Hydraulic tool	5.00			5119.00	
Jars	5.00			5124.00	
Safety Joint	2.00			5126.00	
Packer	5.00			5131.00	28.00 Bottom Of Top Packer
Packer	5.00			5136.00	
Stubb	1.00			5137.00	
Recorder	0.00	8358	Inside	5137.00	
Recorder	0.00	6668	Outside	5137.00	
Perforations	3.00			5140.00	
Change Over Sub	1.00			5141.00	
Drill Pipe	63.00			5204.00	
Change Over Sub	1.00			5205.00	
Perforations	20.00			5225.00	
Bullnose	5.00			5230.00	94.00 Bottom Packers & Anchor
<b>Total Tool Length:</b>	<b>122.00</b>				





**TRILOBITE**  
**TESTING, INC**

## DRILL STEM TEST REPORT

### FLUID SUMMARY

Mull Drilling Co, Inc

**9-18s-46w Cheyenne, CO**

1700 N Waterfront Pkwy B #1200  
Wichita, KS 67206

**APC Medford State1-9**

Job Ticket: 45326

**DST#: 2**

ATTN: Mac Armstrong

Test Start: 2011.11.04 @ 03:33:15

### Mud and Cushion Information

Mud Type: Gel Chem

Cushion Type:

Oil API:

0 deg API

Mud Weight: 9.00 lb/gal

Cushion Length:

ft

Water Salinity:

0 ppm

Viscosity: 55.00 sec/qt

Cushion Volume:

bbl

Water Loss: 7.94 in<sup>3</sup>

Gas Cushion Type:

Resistivity: ohm.m

Gas Cushion Pressure:

psig

Salinity: 2300.00 ppm

Filter Cake: 1.00 inches

### Recovery Information

Recovery Table

Length ft	Description	Volume bbl
60.00	mud w ith oil spots	0.295

Total Length: 60.00 ft

Total Volume: 0.295 bbl

Num Fluid Samples: 0

Num Gas Bombs: 0

Serial #:

Laboratory Name:

Laboratory Location:

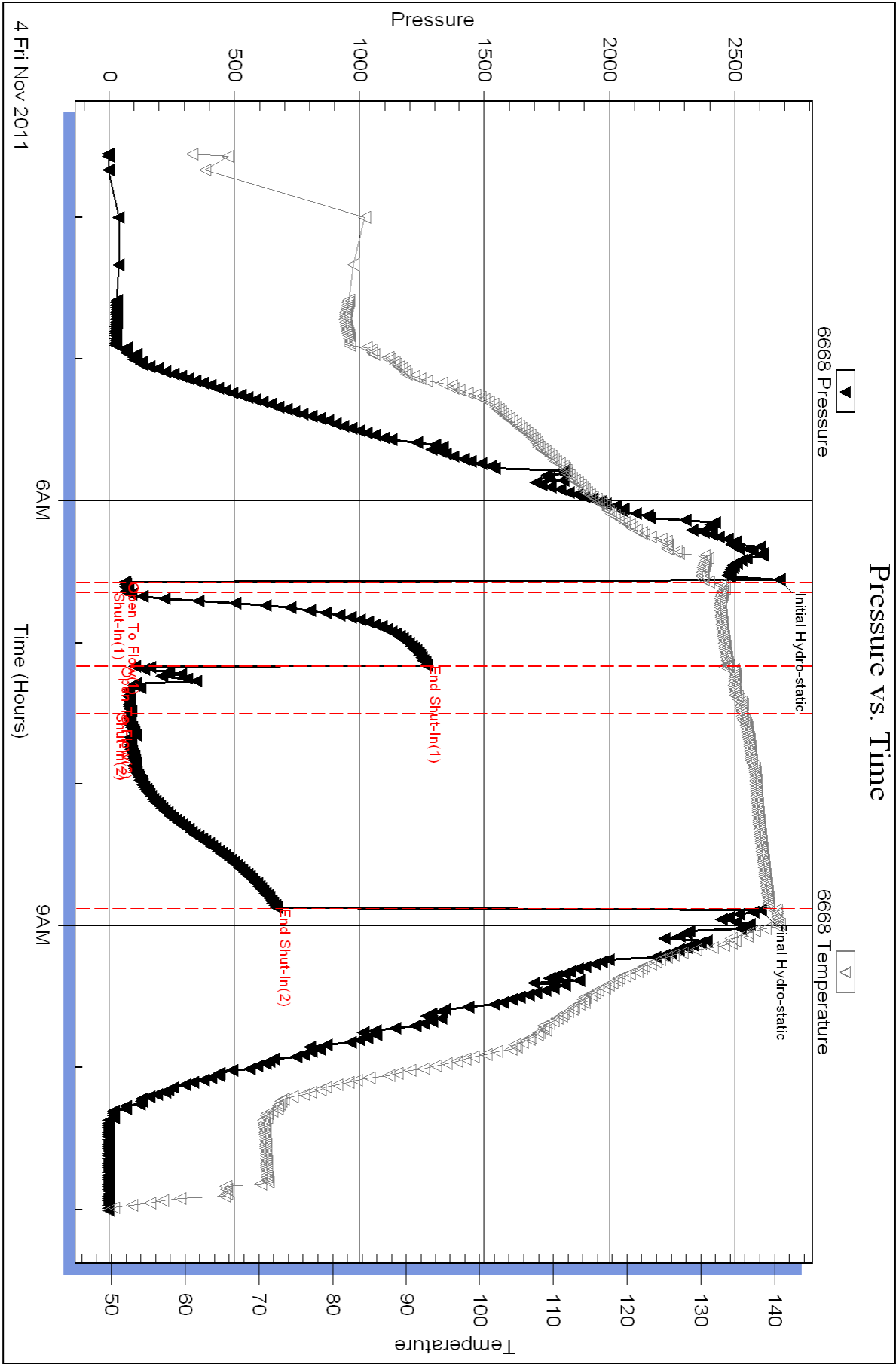
Recovery Comments:

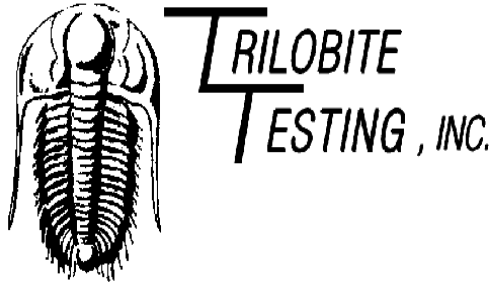
Serial #: 6668

Outside Mull Drilling Co. Inc

APC Medford State-1-9

DST Test Number: 2





## DRILL STEM TEST REPORT

Prepared For: **Mull Drilling Co, Inc**

1700 N Waterfront Pkwy B #1200  
Wichita, KS 67206

ATTN: Mac Armstrong

**APC Medford State1-9**

**9-18s-46w Cheyenne,CO**

Start Date: 2011.11.04 @ 01:02:00

End Date: 2011.11.04 @ 09:37:30

Job Ticket #: 45327                      DST #: 3

Trilobite Testing, Inc

PO Box 362 Hays, KS 67601

ph: 785-625-4778 fax: 785-625-5620

Printed: 2011.11.10 @ 11:11:29

Mull Drilling Co, Inc

9-18s-46w Cheyenne,CO

APC Medford State1-9

DST # 3

Miss- St.Gen.

2011.11.04



**TRILOBITE**  
**TESTING, INC.**

## DRILL STEM TEST REPORT

Mull Drilling Co, Inc

1700 N Waterfront Pkwy B #1200  
Wichita, KS 67206

ATTN: Mac Armstrong

**9-18s-46w Cheyenne, CO**

**APC Medford State 1-9**

Job Ticket: 45327

**DST#: 3**

Test Start: 2011.11.04 @ 01:02:00

### GENERAL INFORMATION:

Formation: **Miss- St.Gen.**

Deviated: No Whipstock: ft (KB)

Time Tool Opened: 03:55:45

Time Test Ended: 09:37:30

Test Type: Conventional Bottom Hole (Reset)

Tester: Mike Roberts

Unit No: 48

**Interval: 5233.00 ft (KB) To 5304.00 ft (KB) (TVD)**

Total Depth: 4574.00 ft (KB) (TVD)

Hole Diameter: 7.88 inches Hole Condition: Fair

Reference Elevations: 4213.00 ft (KB)

4202.00 ft (CF)

KB to GR/CF: 11.00 ft

**Serial #: 6668 Outside**

Press @ Run Depth: 100.56 psig @ 5237.00 ft (KB)

Start Date: 2011.11.04

End Date:

2011.11.04

Start Time: 01:02:15

End Time:

09:37:30

Capacity: 8000.00 psig

Last Calib.: 2011.11.05

Time On Btm: 2011.11.04 @ 03:55:15

Time Off Btm: 2011.11.04 @ 07:30:30

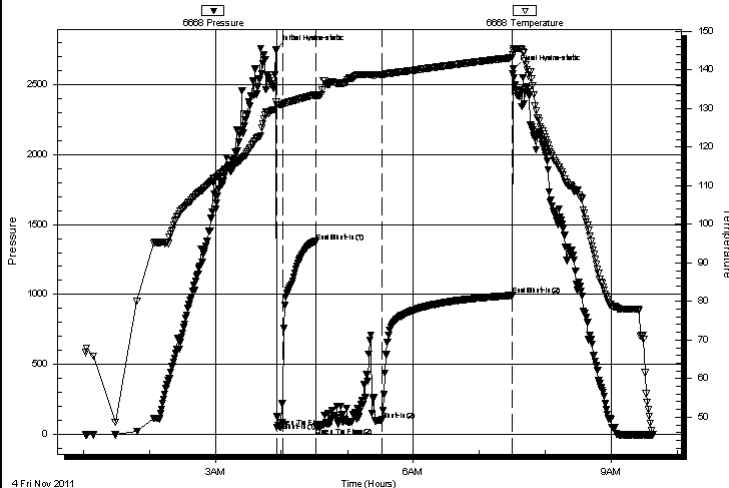
TEST COMMENT: IF: Built to surface blow

IS: No return blow

FF: Built to 1/2" blow

FS: No return blow

Pressure vs. Time



PRESSURE SUMMARY

Time (Min.)	Pressure (psig)	Temp (deg F)	Annotation
0	2747.47	131.73	Initial Hydro-static
1	49.25	131.04	Open To Flow (1)
6	84.35	131.00	Shut-In (1)
36	1378.17	133.63	End Shut-In (1)
37	54.62	133.13	Open To Flow (2)
96	100.56	138.81	Shut-In (2)
215	993.39	143.21	End Shut-In (2)
216	2609.95	144.94	Final Hydro-static

Recovery

Length (ft)	Description	Volume (bbl)
124.00	mud with oil spots	0.61

Gas Rates

	Choke (inches)	Pressure (psig)	Gas Rate (Mcf/d)
--	----------------	-----------------	------------------

\* Recovery from multiple tests



**TRILOBITE**  
**TESTING, INC.**

## DRILL STEM TEST REPORT

### TOOL DIAGRAM

Mull Drilling Co, Inc

**9-18s-46w Cheyenne, CO**

1700 N Waterfront Pkwy B #1200  
Wichita, KS 67206

**APC Medford State1-9**

Job Ticket: 45327

**DST#: 3**

ATTN: Mac Armstrong

Test Start: 2011.11.04 @ 01:02:00

### Tool Information

Drill Pipe:	Length: 5043.00 ft	Diameter: 3.80 inches	Volume: 70.74 bbl	Tool Weight: 2500.00 lb
Heavy Wt. Pipe:	Length: 0.00 ft	Diameter: 0.00 inches	Volume: 0.00 bbl	Weight set on Packer: 20000.00 lb
Drill Collar:	Length: 182.00 ft	Diameter: 2.25 inches	Volume: 0.90 bbl	Weight to Pull Loose: 80000.00 lb
		Total Volume:	71.64 bbl	Tool Chased 0.00 ft
Drill Pipe Above KB:	20.00 ft			String Weight: Initial 64000.00 lb
Depth to Top Packer:	5233.00 ft			Final 65000.00 lb
Depth to Bottom Packer:	ft			
Interval between Packers:	71.00 ft			
Tool Length:	99.00 ft			
Number of Packers:	2	Diameter: 6.75 inches		
Tool Comments:				

### Tool Description

Tool Description	Length (ft)	Serial No.	Position	Depth (ft)	Accum. Lengths
Change Over Sub	1.00			5206.00	
Shut In Tool	5.00			5211.00	
Hydraulic tool	5.00			5216.00	
Jars	5.00			5221.00	
Safety Joint	2.00			5223.00	
Packer	5.00			5228.00	28.00 Bottom Of Top Packer
Packer	5.00			5233.00	
Stubb	1.00			5234.00	
Perforations	3.00			5237.00	
Recorder	0.00	8358	Inside	5237.00	
Recorder	0.00	6668	Outside	5237.00	
Change Over Sub	1.00			5238.00	
Drill Pipe	32.00			5270.00	
Change Over Sub	1.00			5271.00	
Perforations	28.00			5299.00	
Bullnose	5.00			5304.00	71.00 Bottom Packers & Anchor
<b>Total Tool Length:</b>	<b>99.00</b>				



**TRILOBITE**  
**TESTING, INC**

## DRILL STEM TEST REPORT

### FLUID SUMMARY

Mull Drilling Co, Inc

**9-18s-46w Cheyenne, CO**

1700 N Waterfront Pkwy B #1200  
Wichita, KS 67206

**APC Medford State1-9**

Job Ticket: 45327

**DST#: 3**

ATTN: Mac Armstrong

Test Start: 2011.11.04 @ 01:02:00

### Mud and Cushion Information

Mud Type: Gel Chem

Cushion Type:

Oil API:

0 deg API

Mud Weight: 9.00 lb/gal

Cushion Length:

ft

Water Salinity:

0 ppm

Viscosity: 45.00 sec/qt

Cushion Volume:

bbl

Water Loss: 7.94 in<sup>3</sup>

Gas Cushion Type:

Resistivity: ohm.m

Gas Cushion Pressure:

psig

Salinity: 2400.00 ppm

Filter Cake: 1.00 inches

### Recovery Information

Recovery Table

Length ft	Description	Volume bbl
124.00	mud with oil spots	0.610

Total Length: 124.00 ft

Total Volume: 0.610 bbl

Num Fluid Samples: 0

Num Gas Bombs: 0

Serial #:

Laboratory Name:

Laboratory Location:

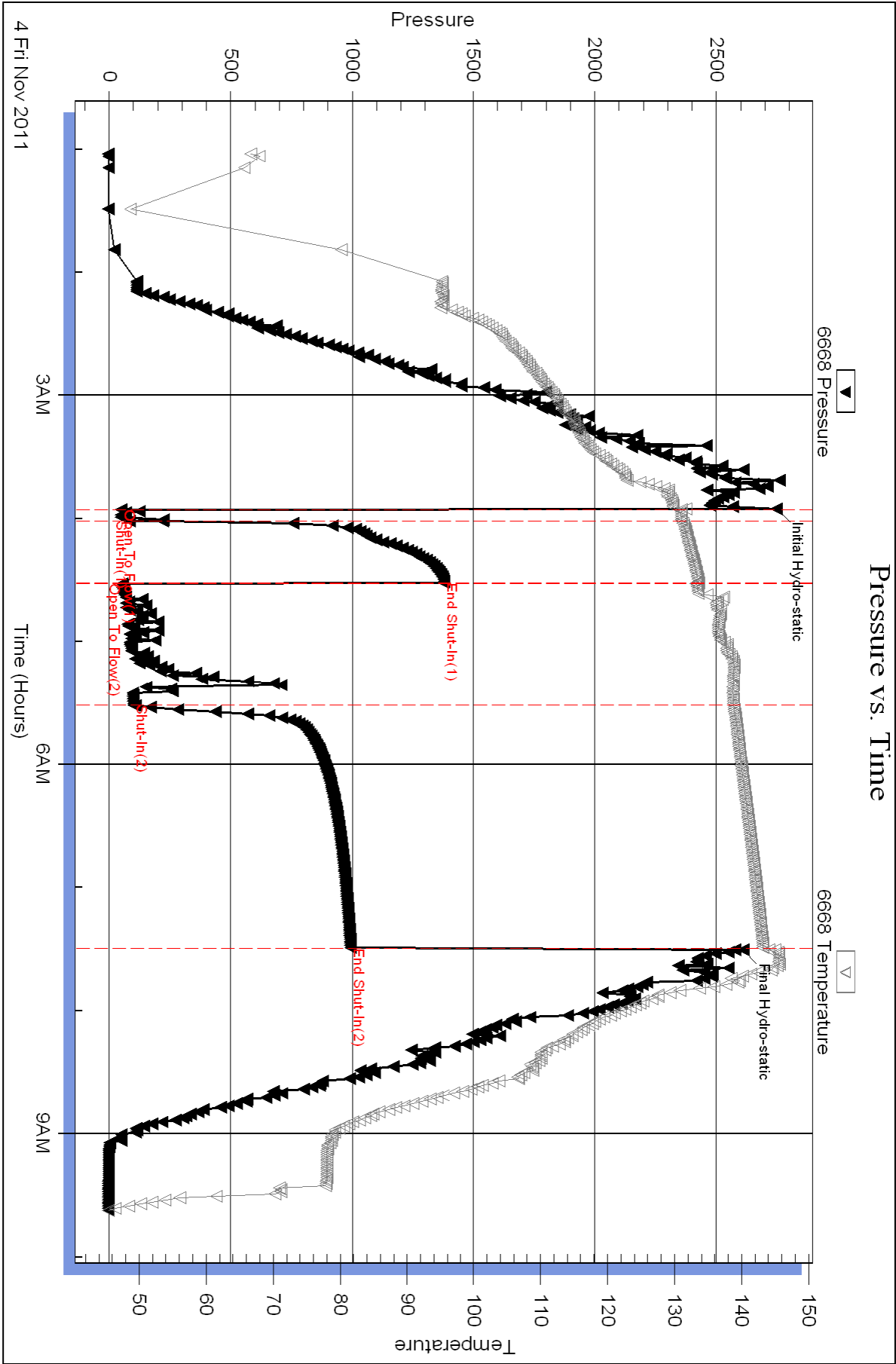
Recovery Comments:

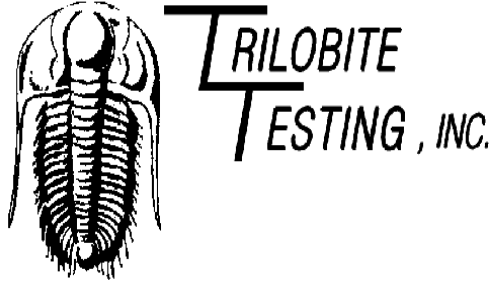
Serial #: 6668

Outside Mull Drilling Co. Inc

APC Medford State-1-9

DST Test Number: 3





## DRILL STEM TEST REPORT

Prepared For: **Mull Drilling Co, Inc**

1700 N Waterfront Pkwy B #1200  
Wichita, KS 67206

ATTN: Mac Armstrong

**APC Medford State1-9**

**9-18s-46w Cheyenne,CO**

Start Date: 2011.11.05 @ 23:52:15

End Date: 2011.11.06 @ 07:10:45

Job Ticket #: 45328                      DST #: 4

Trilobite Testing, Inc

PO Box 362 Hays, KS 67601

ph: 785-625-4778 fax: 785-625-5620

Printed: 2011.11.10 @ 11:12:12





**TRILOBITE**  
**TESTING, INC.**

## DRILL STEM TEST REPORT

Mull Drilling Co, Inc

1700 N Waterfront Pkwy B #1200  
Wichita, KS 67206

ATTN: Mac Armstrong

**9-18s-46w Cheyenne, CO**

**APC Medford State1-9**

Job Ticket: 45328

**DST#: 4**

Test Start: 2011.11.05 @ 23:52:15

### GENERAL INFORMATION:

Formation: **Miss-Spergen**

Deviated: No Whipstock: ft (KB)

Time Tool Opened: 02:42:30

Time Test Ended: 07:10:45

Test Type: Conventional Bottom Hole (Reset)

Tester: Mike Roberts

Unit No: 48

**Interval: 5320.00 ft (KB) To 5356.00 ft (KB) (TVD)**

Reference Elevations: 4213.00 ft (KB)

Total Depth: 5356.00 ft (KB) (TVD)

4202.00 ft (CF)

Hole Diameter: 7.88 inches Hole Condition: Fair

KB to GR/CF: 11.00 ft

**Serial #: 6668 Outside**

Press @ Run Depth: 40.93 psig @ 5321.00 ft (KB)

Capacity: 8000.00 psig

Start Date: 2011.11.05

End Date:

2011.11.06

Last Calib.: 2011.11.06

Start Time: 23:52:15

End Time:

07:10:45

Time On Btm: 2011.11.06 @ 02:42:15

Time Off Btm: 2011.11.06 @ 04:49:45

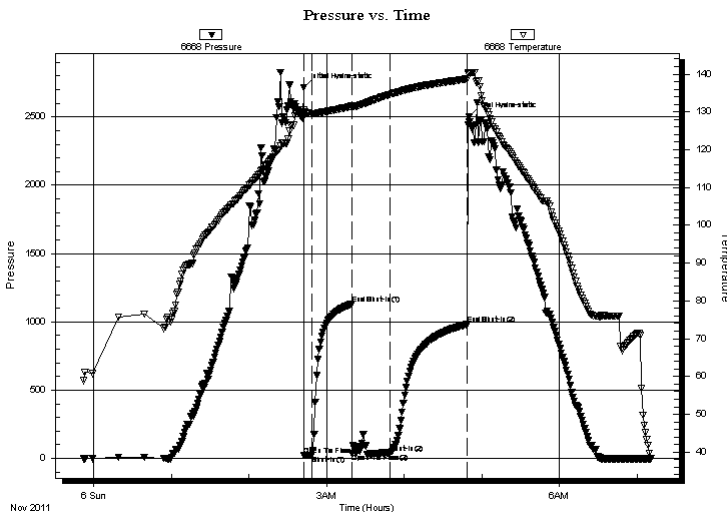
TEST COMMENT: IF: Built to weak surface blow

IS: No return blow

FF: No blow

FS: No return blow

### PRESSURE SUMMARY



Time (Min.)	Pressure (psig)	Temp (deg F)	Annotation
0	2714.32	130.41	Initial Hydro-static
1	20.44	129.11	Open To Flow (1)
6	24.17	129.48	Shut-In(1)
38	1132.50	131.51	End Shut-In(1)
38	35.81	131.14	Open To Flow (2)
67	40.93	134.62	Shut-In(2)
127	981.64	138.69	End Shut-In(2)
128	2499.25	140.32	Final Hydro-static

### Recovery

Length (ft)	Description	Volume (bbl)
20.00	mud 100% m	0.10

### Gas Rates

	Choke (inches)	Pressure (psig)	Gas Rate (Mcf/d)
--	----------------	-----------------	------------------

\* Recovery from multiple tests



**TRILOBITE**  
**TESTING, INC**

## DRILL STEM TEST REPORT

**TOOL DIAGRAM**

Mull Drilling Co, Inc

**9-18s-46w Cheyenne, CO**

1700 N Waterfront Pkwy B #1200  
Wichita, KS 67206

**APC Medford State1-9**

Job Ticket: 45328

**DST#: 4**

ATTN: Mac Armstrong

Test Start: 2011.11.05 @ 23:52:15

### Tool Information

Drill Pipe:	Length: 5140.00 ft	Diameter: 3.80 inches	Volume: 72.10 bbl	Tool Weight: 2500.00 lb
Heavy Wt. Pipe:	Length: 0.00 ft	Diameter: 0.00 inches	Volume: 0.00 bbl	Weight set on Packer: 20000.00 lb
Drill Collar:	Length: 182.00 ft	Diameter: 2.25 inches	Volume: 0.90 bbl	Weight to Pull Loose: 80000.00 lb
		Total Volume:	73.00 bbl	Tool Chased 0.00 ft
Drill Pipe Above KB:	30.00 ft			String Weight: Initial 64000.00 lb
Depth to Top Packer:	5320.00 ft			Final 64000.00 lb
Depth to Bottom Packer:	ft			
Interval between Packers:	36.00 ft			
Tool Length:	64.00 ft			
Number of Packers:	2	Diameter:	6.75 inches	
Tool Comments:				

Tool Description	Length (ft)	Serial No.	Position	Depth (ft)	Accum. Lengths
------------------	-------------	------------	----------	------------	----------------

Change Over Sub	1.00			5293.00	
Shut In Tool	5.00			5298.00	
Hydraulic tool	5.00			5303.00	
Jars	5.00			5308.00	
Safety Joint	2.00			5310.00	
Packer	5.00			5315.00	28.00 Bottom Of Top Packer
Packer	5.00			5320.00	
Stubb	1.00			5321.00	
Recorder	0.00	8358	Inside	5321.00	
Recorder	0.00	6668	Outside	5321.00	
Perforations	30.00			5351.00	
Bullnose	5.00			5356.00	36.00 Bottom Packers & Anchor

**Total Tool Length: 64.00**



**TRILOBITE**  
**TESTING, INC**

## DRILL STEM TEST REPORT

### FLUID SUMMARY

Mull Drilling Co, Inc

**9-18s-46w Cheyenne, CO**

1700 N Waterfront Pkwy B #1200  
Wichita, KS 67206

**APC Medford State1-9**

Job Ticket: 45328

**DST#: 4**

ATTN: Mac Armstrong

Test Start: 2011.11.05 @ 23:52:15

### Mud and Cushion Information

Mud Type: Gel Chem

Cushion Type:

Oil API:

0 deg API

Mud Weight: 9.00 lb/gal

Cushion Length:

ft

Water Salinity:

0 ppm

Viscosity: 45.00 sec/qt

Cushion Volume:

bbl

Water Loss: 7.96 in<sup>3</sup>

Gas Cushion Type:

Resistivity: 0.00 ohm.m

Gas Cushion Pressure:

psig

Salinity: 2400.00 ppm

Filter Cake: 1.00 inches

### Recovery Information

Recovery Table

Length ft	Description	Volume bbl
20.00	mud 100% m	0.098

Total Length: 20.00 ft

Total Volume: 0.098 bbl

Num Fluid Samples: 0

Num Gas Bombs: 0

Serial #:

Laboratory Name:

Laboratory Location:

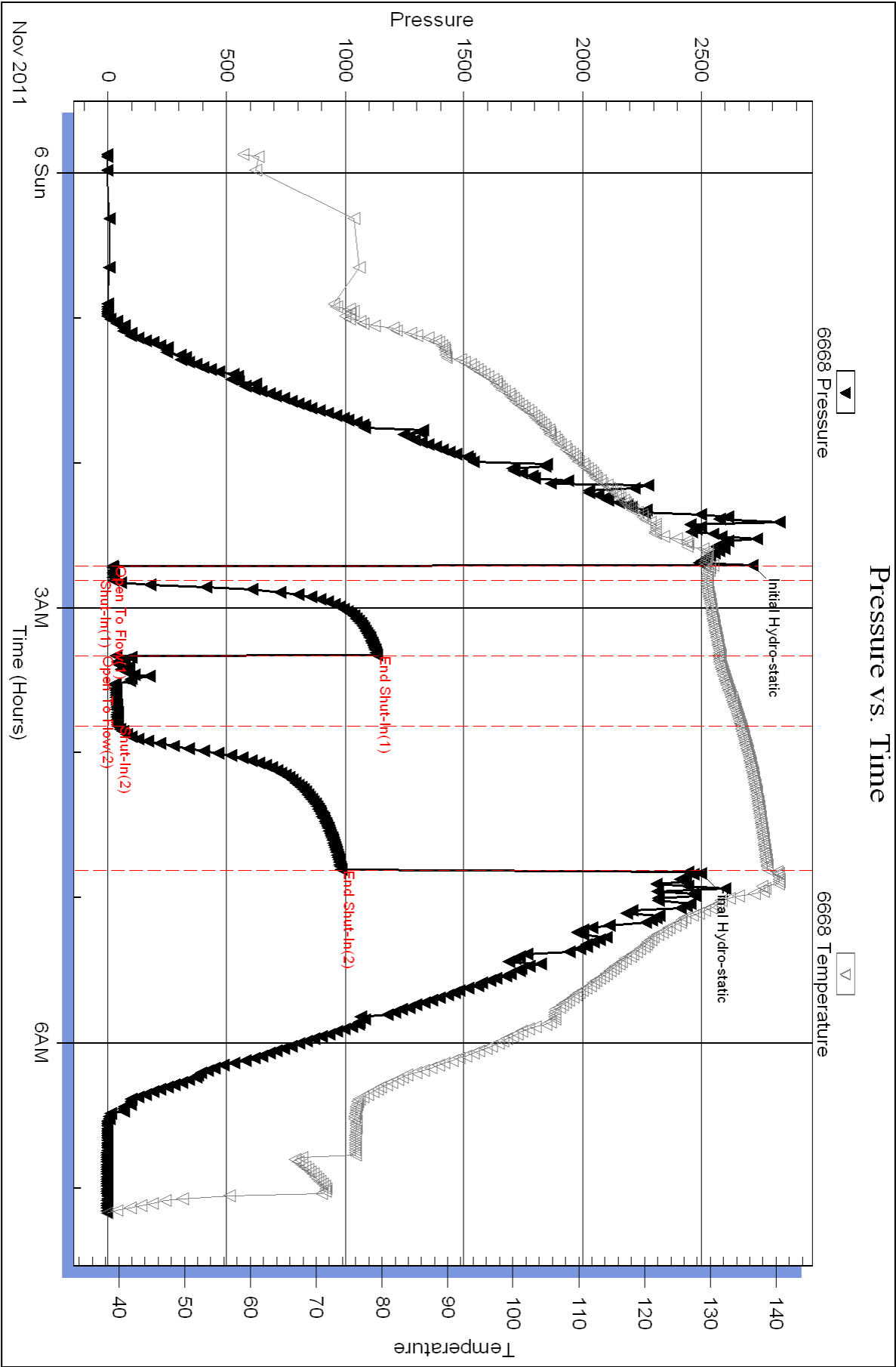
Recovery Comments:

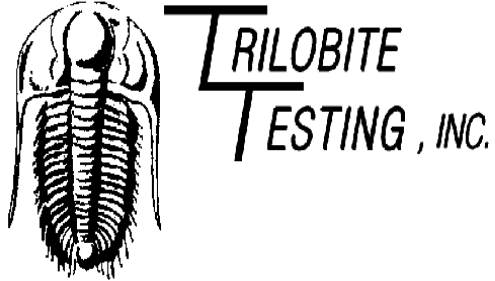
Serial #: 6668

Outside Mull Drilling Co. Inc

APC Medford State-1-9

DST Test Number: 4





## DRILL STEM TEST REPORT

Prepared For: **Mull Drilling Co, Inc**

1700 N Waterfront Pkwy B #1200  
Wichita, KS 67206

ATTN: Mac Armstrong

**APC Medford State1-9**

**9-18s-46w Cheyenne,CO**

Start Date: 2011.11.06 @ 16:23:15

End Date: 2011.11.07 @ 01:14:45

Job Ticket #: 45329                      DST #: 5

Trilobite Testing, Inc

PO Box 362 Hays, KS 67601

ph: 785-625-4778 fax: 785-625-5620

Printed: 2011.11.10 @ 11:12:53

Mull Drilling Co, Inc

9-18s-46w Cheyenne,CO

APC Medford State1-9

DST # 5

Miss-Spergen

2011.11.06



**TRILOBITE  
TESTING, INC.**

## DRILL STEM TEST REPORT

Mull Drilling Co, Inc

1700 N Waterfront Pkwy B #1200  
Wichita, KS 67206

ATTN: Mac Armstrong

**9-18s-46w Cheyenne, CO**

**APC Medford State 1-9**

Job Ticket: 45329

**DST#: 5**

Test Start: 2011.11.06 @ 16:23:15

### GENERAL INFORMATION:

Formation: **Miss- Spergen**

Deviated: No Whipstock: ft (KB)

Time Tool Opened: 19:02:00

Time Test Ended: 01:14:45

Test Type: Conventional Bottom Hole (Reset)

Tester: Mike Roberts

Unit No: 48

**Interval: 5360.00 ft (KB) To 5386.00 ft (KB) (TVD)**

Total Depth: 5386.00 ft (KB) (TVD)

Hole Diameter: 7.88 inches Hole Condition: Poor

Reference Elevations: 4213.00 ft (KB)

4202.00 ft (CF)

KB to GR/CF: 11.00 ft

**Serial #: 6668 Outside**

Press@RunDepth: 172.97 psig @ 5361.00 ft (KB)

Start Date: 2011.11.06

End Date:

2011.11.07

Start Time: 16:23:15

End Time:

01:14:45

Capacity: 8000.00 psig

Last Calib.: 2011.11.07

Time On Btm: 2011.11.06 @ 19:00:45

Time Off Btm: 2011.11.06 @ 22:38:00

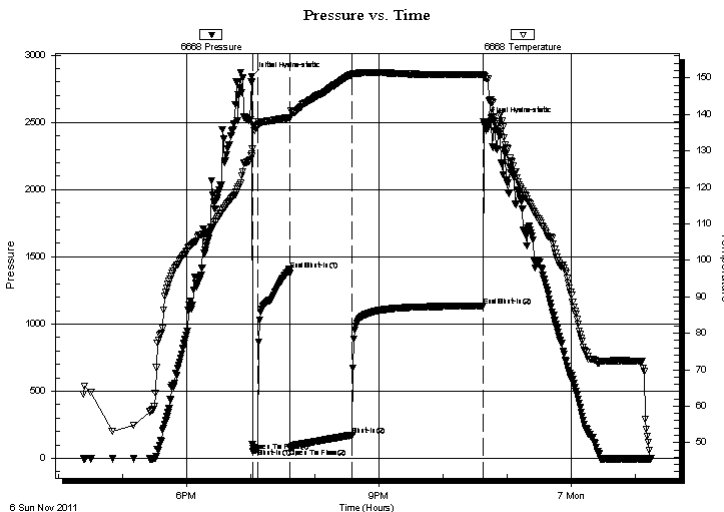
TEST COMMENT: IF: Built to 2 1/2" blow

IS: No return blow

FF: BOB in 52 min.

FS: No return blow

### PRESSURE SUMMARY



Time (Min.)	Pressure (psig)	Temp (deg F)	Annotation
0	2842.92	129.16	Initial Hydro-static
2	54.36	138.03	Open To Flow (1)
6	74.01	136.76	Shut-In(1)
36	1405.09	139.15	End Shut-In(1)
36	77.53	138.76	Open To Flow (2)
94	172.97	150.98	Shut-In(2)
217	1134.40	150.90	End Shut-In(2)
218	2504.21	150.04	Final Hydro-static

### Recovery

Length (ft)	Description	Volume (bbl)
386.00	mud w with a few oil spots	3.76

### Gas Rates

	Choke (inches)	Pressure (psig)	Gas Rate (Mcf/d)
--	----------------	-----------------	------------------

\* Recovery from multiple tests



**TRILOBITE**  
**TESTING, INC.**

## DRILL STEM TEST REPORT

**TOOL DIAGRAM**

Mull Drilling Co, Inc

**9-18s-46w Cheyenne, CO**

1700 N Waterfront Pkwy B #1200  
Wichita, KS 67206

**APC Medford State1-9**

Job Ticket: 45329

**DST#: 5**

ATTN: Mac Armstrong

Test Start: 2011.11.06 @ 16:23:15

### Tool Information

Drill Pipe:	Length: 5172.00 ft	Diameter: 3.80 inches	Volume: 72.55 bbl	Tool Weight: 2500.00 lb
Heavy Wt. Pipe:	Length: 0.00 ft	Diameter: 0.00 inches	Volume: 0.00 bbl	Weight set on Packer: 20000.00 lb
Drill Collar:	Length: 182.00 ft	Diameter: 2.25 inches	Volume: 0.90 bbl	Weight to Pull Loose: 80000.00 lb
		Total Volume:	73.45 bbl	Tool Chased 0.00 ft
Drill Pipe Above KB:	22.00 ft			String Weight: Initial 64000.00 lb
Depth to Top Packer:	5360.00 ft			Final 67000.00 lb
Depth to Bottom Packer:	ft			
Interval between Packers:	26.00 ft			
Tool Length:	54.00 ft			
Number of Packers:	2	Diameter:	6.75 inches	
Tool Comments:				

Tool Description	Length (ft)	Serial No.	Position	Depth (ft)	Accum. Lengths
------------------	-------------	------------	----------	------------	----------------

Change Over Sub	1.00			5333.00	
Shut In Tool	5.00			5338.00	
Hydraulic tool	5.00			5343.00	
Jars	5.00			5348.00	
Safety Joint	2.00			5350.00	
Packer	5.00			5355.00	28.00 Bottom Of Top Packer
Packer	5.00			5360.00	
Stubb	1.00			5361.00	
Recorder	0.00	8358	Inside	5361.00	
Recorder	0.00	6668	Outside	5361.00	
Perforations	20.00			5381.00	
Bullnose	5.00			5386.00	26.00 Bottom Packers & Anchor

**Total Tool Length: 54.00**



**TRILOBITE**  
**TESTING, INC**

## DRILL STEM TEST REPORT

### FLUID SUMMARY

Mull Drilling Co, Inc

**9-18s-46w Cheyenne, CO**

1700 N Waterfront Pkwy B #1200  
Wichita, KS 67206

**APC Medford State1-9**

Job Ticket: 45329

**DST#: 5**

ATTN: Mac Armstrong

Test Start: 2011.11.06 @ 16:23:15

### Mud and Cushion Information

Mud Type: Gel Chem

Cushion Type:

Oil API:

0 deg API

Mud Weight: 9.00 lb/gal

Cushion Length:

ft

Water Salinity:

0 ppm

Viscosity: 65.00 sec/qt

Cushion Volume:

bbl

Water Loss: 7.97 in<sup>3</sup>

Gas Cushion Type:

Resistivity: ohm.m

Gas Cushion Pressure:

psig

Salinity: 2100.00 ppm

Filter Cake: 1.00 inches

### Recovery Information

Recovery Table

Length ft	Description	Volume bbl
386.00	mud with a few oil spots	3.757

Total Length: 386.00 ft

Total Volume: 3.757 bbl

Num Fluid Samples: 0

Num Gas Bombs: 0

Serial #:

Laboratory Name:

Laboratory Location:

Recovery Comments:

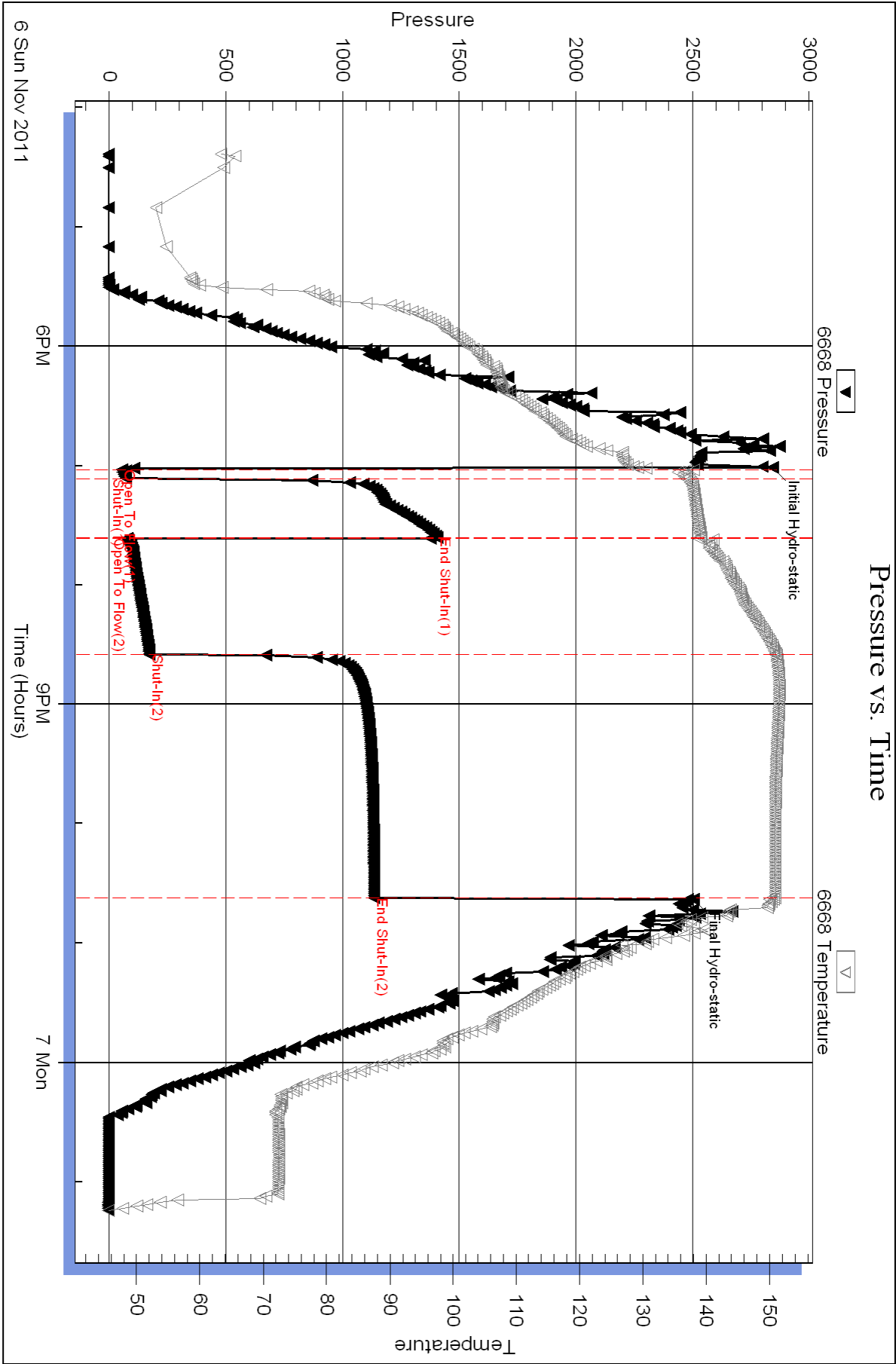


Serial #: 6668

Outside Mull Drilling Co., Inc

APC Medford State-1-9

DST Test Number: 5

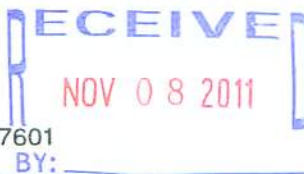




4/10

**TRILOBITE  
TESTING INC.**

P.O. Box 1733 • Hays, Kansas 67601

**Test Ticket**NO. **44500**

Well Name & No. APC Medford State #1-9 Test No. 1 Date 11/1/11  
 Company Mull Drilling Co, Inc. Elevation 4213 KB 4202 GL  
 Address 1700 N Waterfront Pkwy B #1200 Wichita, ks 67206  
 Co. Rep / Geo. Mac Armstrong Rig Murfin 20  
 Location: Sec. 9 Twp. 16s Rge. 46w Co. Cheyenne State Co

Interval Tested 4533 4574 Zone Tested Ft Scott  
 Anchor Length 41 Drill Pipe Run 4353 Mud Wt. 9.2  
 Top Packer Depth 4528 Drill Collars Run 182 Vis 52  
 Bottom Packer Depth 4533 Wt. Pipe Run 0 WL 8.0  
 Total Depth 4574 Chlorides 1900 ppm System LCM 8 #

Blow Description IF! Surface b6w  
ISI! No return.  
FF! No blow  
FSI! No return.

Rec	Feet of	%gas	%oil	%water	%mud
<u>5</u>	<u>MUD</u>			<u>100</u>	
Rec	Feet of	%gas	%oil	%water	%mud
Rec	Feet of	%gas	%oil	%water	%mud
Rec	Feet of	%gas	%oil	%water	%mud
Rec	Feet of	%gas	%oil	%water	%mud

Rec Total 5 BHT 125 Gravity — API RW — @ — °F Chlorides — ppm

(A) Initial Hydrostatic	<u>2263</u>	<input checked="" type="checkbox"/> Test	<u>1225</u>	T-On Location	<u>2045</u>
(B) First Initial Flow	<u>24</u>	<input checked="" type="checkbox"/> Jars	<u>250</u>	T-Started	<u>2220</u>
(C) First Final Flow	<u>25</u>	<input checked="" type="checkbox"/> Safety Joint	<u>75</u>	T-Open	<u>0045</u>
(D) Initial Shut-In	<u>516</u>	<input checked="" type="checkbox"/> Circ Sub	<u>NK</u>	T-Pulled	<u>0250</u>
(E) Second Initial Flow	<u>24</u>	<input type="checkbox"/> Hourly Standby		T-Out	<u>0315</u>
(F) Second Final Flow	<u>23</u>	<input checked="" type="checkbox"/> Mileage	<u>220 RT 308</u>	Comments	
(G) Final Shut-In	<u>196</u>	<input type="checkbox"/> Sampler			
(H) Final Hydrostatic	<u>2131</u>	<input type="checkbox"/> Straddle			

Initial Open	<u>5</u>	<input type="checkbox"/> Shale Packer		<input type="checkbox"/> Ruined Shale Packer	
Initial Shut-In	<u>30</u>	<input type="checkbox"/> Extra Packer		<input type="checkbox"/> Ruined Packer	
Final Flow	<u>30</u>	<input type="checkbox"/> Extra Recorder		<input type="checkbox"/> Extra Copies	
Final Shut-In	<u>60</u>	<input type="checkbox"/> Day Standby		Sub Total	<u>0</u>
		<input type="checkbox"/> Accessibility		Total	<u>1858</u>
		Sub Total	<u>1858</u>	MP/DST Disc't	

Approved By \_\_\_\_\_ Our Representative [Signature]  
 Trilobite Testing Inc. shall not be liable for damaged of any kind of the property or personnel of the one for whom a test is made, or for any loss suffered or sustained, directly or indirectly, through the use of its equipment, or its statements or opinion concerning the results of any test, tools lost or damaged in the hole shall be paid for at cost by the party for whom the test is made.



# TRILOBITE TESTING INC.

P.O. Box 1733 • Hays, Kansas 67601

## Test Ticket

NOV 08 2011

NO. 45326

Well Name & No. APC-Medford State Unit #1-9 Test No. 2 Date 11-4-11  
 Company Mull Drilling Co Elevation 4213 KB 4203 GL  
 Address 1700 N. Waterfront Pkwy B#1200 Wichita KS 67206  
 Co. Rep / Geo. Mac Armstrong Rig Martin 20  
 Location: Sec. 9 Twp. 16S Rge. 46W Co. Cheyenne State CO

Interval Tested 5136-5230 Zone Tested Miss-St. Gen  
 Anchor Length 94 Drill Pipe Run 4956 Mud Wt. 9.3  
 Top Packer Depth 5132 Drill Collars Run 180 Vis 55  
 Bottom Packer Depth 5136 Wt. Pipe Run 9 WL 8.0  
 Total Depth 5230 Chlorides 2300 ppm System LCM 8

Blow Description IF: Weak Surface Blow Died in 3 Min  
IS: No Return Blow  
FF: Weak Surface Blow Died in 6 Min.  
FS: No Return Blow

Rec	Feet of	%gas	%oil	%water	%mud
<u>60</u>	<u>mod with oil spots</u>			<u>100</u>	
Rec	Feet of	%gas	%oil	%water	%mud
Rec	Feet of	%gas	%oil	%water	%mud
Rec	Feet of	%gas	%oil	%water	%mud
Rec	Feet of	%gas	%oil	%water	%mud

Rec Total	BHT	Gravity	API RW	@	° F	Chlorides	ppm
<u>60</u>	<u>121</u>	<u>1</u>	<u>1</u>	<u>1</u>	<u>1</u>	<u>1</u>	<u>1</u>
(A) Initial Hydrostatic	<u>2677</u>	<input checked="" type="checkbox"/> Test	<u>1325.00</u>			T-On Location	<u>01:30 KS</u>
(B) First Initial Flow	<u>63</u>	<input checked="" type="checkbox"/> Jars	<u>250.00</u>			T-Started	<u>03:33 KS</u>
(C) First Final Flow	<u>72</u>	<input checked="" type="checkbox"/> Safety Joint	<u>75.00</u>			T-Open	<u>06:15</u>
(D) Initial Shut-In	<u>1268</u>	<input checked="" type="checkbox"/> Circ Sub	<u>NL</u>			T-Pulled	<u>08:30</u>
(E) Second Initial Flow	<u>102</u>	<input type="checkbox"/> Hourly Standby				T-Out	<u>11:01</u>
(F) Second Final Flow	<u>82</u>	<input checked="" type="checkbox"/> Mileage	<u>220=308</u>			Comments	
(G) Final Shut-In	<u>670</u>	<input type="checkbox"/> Sampler					
(H) Final Hydrostatic	<u>2604</u>	<input type="checkbox"/> Straddle					

Initial Open	<u>5</u>	<input type="checkbox"/> Shale Packer		<input type="checkbox"/> Ruined Shale Packer	
Initial Shut-In	<u>30</u>	<input type="checkbox"/> Extra Packer		<input type="checkbox"/> Ruined Packer	
Final Flow	<u>30</u>	<input type="checkbox"/> Extra Recorder		<input type="checkbox"/> Extra Copies	
Final Shut-In	<u>60</u>	<input type="checkbox"/> Day Standby		Sub Total	<u>0</u>
		<input type="checkbox"/> Accessibility		Total	<u>1958</u>
		Sub Total	<u>1958</u>	MP/DST Disc't	

Approved By Manuel M. Almeyda

Our Representative Mike Roberts

Triobite Testing Inc. shall not be liable for damaged of any kind of the property or personnel of the one for whom a test is made, or for any loss suffered or sustained, directly or indirectly, through the use of its equipment, or its statements or opinion concerning the results of any test, tools lost or damaged in the hole shall be paid for at cost by the party for whom the test is made.

armstrong.mae@gmail.com





# TRILOBITE TESTING INC.

P.O. Box 1733 • Hays, Kansas 67601

RECEIVED  
NOV 08 2011

## Test Ticket

NO. 45327

Well Name & No. APC - Medford State Unit #1-9 Test No. 3 Date 11-4-11  
Company Mull Drilling Co Elevation 4213 KB 4203 GL  
Address 1700 N. Waterfront Pkwy B# 1200 Wichita KS 67206  
Co. Rep / Geo. Mac Armstrong Rig Murfin 20  
Location: Sec. 9 Twp. 16S Rge. 46W Co. Cherokee State CO

Interval Tested 5233-5304 Zone Tested Miss  
Anchor Length 71' Drill Pipe Run 5043 Mud Wt. 9.3  
Top Packer Depth 5229 Drill Collars Run 182 Vis 45  
Bottom Packer Depth 5233 Wt. Pipe Run 0 WL 8.0  
Total Depth 5304 Chlorides 2400 ppm System LCM 8.

Blow Description IF: Built to Surface Blow  
IS: No Return Blow  
FF: Built to 1/2" Blow  
FS: No Return Blow

Rec	Feet of	%gas	%oil	%water	%mud
<u>124</u>	<u>Feet of M with oil spots</u>			<u>100</u>	
Rec	Feet of	%gas	%oil	%water	%mud
Rec	Feet of	%gas	%oil	%water	%mud
Rec	Feet of	%gas	%oil	%water	%mud
Rec	Feet of	%gas	%oil	%water	%mud

Rec Total 124 BHT 147 Gravity 1 API RW 1325.00 @ 1 °F Chlorides 1 ppm  
(A) Initial Hydrostatic 2747 2645 ☒ Test 1325.00 T-On Location 11:30 KS  
(B) First Initial Flow 49 63 ☒ Jars 250.00 T-Started 1:02 KS  
(C) First Final Flow 84 22 ☒ Safety Joint 75.00 T-Open 02:55 CO  
(D) Initial Shut-In 1328 1268 ☒ Circ Sub NL T-Pulled 06:30 CO  
(E) Second Initial Flow 54 102 ☐ Hourly Standby 08:37 T-Out 08:37  
(F) Second Final Flow 100 93 ☒ Mileage 220- # 308 00 Comments  
(G) Final Shut-In 993 670 ☐ Sampler  
(H) Final Hydrostatic 2609 2609 ☐ Straddle

☐ Shale Packer ☒ Ruined Shale Packer  
☐ Extra Packer ☒ Ruined Packer 320  
☐ Extra Recorder ☐ Extra Copies  
☐ Day Standby Sub Total 320  
☐ Accessibility Total 2278  
Sub Total 11958 MP/DST Disc't

Approved By \_\_\_\_\_ Our Representative Mike Roberts

Trilobite Testing Inc. shall not be liable for damaged of any kind of the property or personnel of the one for whom a test is made, or for any loss suffered or sustained, directly or indirectly, through the use of its equipment, or its statements or opinion concerning the results of any test, tools lost or damaged in the hole shall be paid for at cost by the party for whom the test is made.



# TRILOBITE TESTING INC.

P.O. Box 1733 • Hays, Kansas 67601

RECEIVED  
NOV 08 2011

## Test Ticket

NO. 45328

Well Name & No. APC - Medford State Unit #19 Test No. 4 Date 11-5-11  
Company Mull Drilling Co. Elevation 4213 KB 4203 GL  
Address 1700 N. Waterfront Pkwy B# 1200 Wichita KS 67206  
Co. Rep / Geo. MAC Armstrong Rig Murfin 20  
Location: Sec. 9 Twp. 16S Rge. 46W Co. Cheyenne State KS

Interval Tested 5320-5356 Zone Tested Miss-Spergen  
Anchor Length 36' Drill Pipe Run 5140 Mud Wt. 9.3  
Top Packer Depth 5316 Drill Collars Run 182 Vis 45  
Bottom Packer Depth 5320 Wt. Pipe Run Ø WL 8.0  
Total Depth 5356 Chlorides 2400 ppm System LCM 10  
Blow Description IF: Built to Weak Surface Blow  
IS: No Return Blow  
FF: No Blow  
FS: No Return Blow

Rec	Feet of	%gas	%oil	%water	%mud
<u>20</u>	<u>MUD</u>			<u>100%</u>	<u>mud</u>
Rec	Feet of	%gas	%oil	%water	%mud
Rec	Feet of	%gas	%oil	%water	%mud
Rec	Feet of	%gas	%oil	%water	%mud
Rec	Feet of	%gas	%oil	%water	%mud

Rec Total 20 BHT 135 Gravity 1 API RW 1 @ 1 °F Chlorides 1 ppm

(A) Initial Hydrostatic	<u>2714</u>	<input checked="" type="checkbox"/> Test	<u>1325.00</u>	T-On Location	<u>22:00</u>
(B) First Initial Flow	<u>20</u>	<input checked="" type="checkbox"/> Jars	<u>250.00</u>	T-Started	<u>11:52 KS</u>
(C) First Final Flow	<u>24</u>	<input checked="" type="checkbox"/> Safety Joint	<u>75.00</u>	T-Open	<u>01:42 KS</u>
(D) Initial Shut-In	<u>1132</u>	<input checked="" type="checkbox"/> Circ Sub	<u>NC</u>	T-Pulled	<u>03:49 KS</u>
(E) Second Initial Flow	<u>35</u>	<input type="checkbox"/> Hourly Standby		T-Out	<u>06:10 KS</u>
(F) Second Final Flow	<u>40</u>	<input checked="" type="checkbox"/> Mileage	<u>220 = \$308.00</u>	Comments	<u>High LCM content</u>
(G) Final Shut-In	<u>961</u>	<input type="checkbox"/> Sampler			
(H) Final Hydrostatic	<u>2499</u>	<input type="checkbox"/> Straddle		<input type="checkbox"/> Ruined Shale Packer	

Initial Open	<u>5</u>	<input type="checkbox"/> Shale Packer	<input checked="" type="checkbox"/> Ruined Packer	<u>320</u>
Initial Shut-In	<u>30</u>	<input type="checkbox"/> Extra Packer	<input type="checkbox"/> Extra Copies	
Final Flow	<u>30</u>	<input type="checkbox"/> Extra Recorder	Sub Total	<u>320</u>
Final Shut-In	<u>60</u>	<input type="checkbox"/> Day Standby	Total	<u>2278</u>
		<input type="checkbox"/> Accessibility	MP/DST Disc't	
		Sub Total	<u>\$1958.00</u>	

Approved By

Our Representative

Trilobite Testing Inc. shall not be liable for damaged of any kind of the property or personnel of the one for whom a test is made, or for any loss suffered or sustained, directly or indirectly, through the use of its equipment, or its statements or opinion concerning the results of any test, tools lost or damaged in the hole shall be paid for at cost by the party for whom the test is made.





# TRILOBITE TESTING INC.

P.O. Box 1733 • Hays, Kansas 67601

RECEIVED  
NOV 08 2011

## Test Ticket

NO. 45329

BY:

Well Name & No. APC - Medford State Unit #1-9 Test No. 5 Date 11-6-11  
Company Mull Drilling Co. Elevation 4213 KB 4203 GL  
Address 1700 N. Waterfront Pkwy B#1200 Wichita KS 67206  
Co. Rep / Geo. Mac Armstrong Rig Murfin 20  
Location: Sec. 9 Twp. 16S Rge. 4W Co. Cheyenne State CO

Interval Tested 5360 - 5386 Zone Tested Miss-Spergen  
Anchor Length 26' Drill Pipe Run 5172 Mud Wt. 9.3  
Top Packer Depth 5354 Drill Collars Run 182 Vis 65  
Bottom Packer Depth ~~5386~~ 5360 Wt. Pipe Run Ø WL 8.0  
Total Depth 5386 Chlorides 2100 ppm System LCM 12

Blow Description TF: Built to 2 1/2" Blow  
IS: No Return Blow  
FF: BOB in 52 Min.  
FS: No Return Blow

Rec	Feet of	%gas	%oil	%water	%mud
386	Feet of	Mud with a few oil spots		100	
Rec	Feet of	%gas	%oil	%water	%mud
Rec	Feet of	%gas	%oil	%water	%mud
Rec	Feet of	%gas	%oil	%water	%mud
Rec	Feet of	%gas	%oil	%water	%mud

Rec Total 386 BHT 151 Gravity 1 API RW 1 @ 1 °F Chlorides 1 ppm  
(A) Initial Hydrostatic 2842 ☒ Test 1325.00 T-On Location 14:30  
(B) First Initial Flow 54 ☒ Jars 250.00 T-Started 16:23  
(C) First Final Flow 74 ☒ Safety Joint 75.00 T-Open 19:00  
(D) Initial Shut-In 1405 ☒ Circ Sub 22:35 T-Pulled 01:15  
(E) Second Initial Flow 77 ☐ Hourly Standby 308.00 T-Out 01:15  
(F) Second Final Flow 172 ☒ Mileage 220 = 4' - 308.00 Comments  
(G) Final Shut-In 1134 ☐ Sampler  
(H) Final Hydrostatic 2504 ☐ Straddle  
☐ Shale Packer  
☐ Ruined Shale Packer  
☐ Ruined Packer  
☐ Extra Copies

Initial Open 5 ☐ Extra Packer  
Initial Shut-In 30 ☐ Extra Recorder  
Final Flow 60 ☐ Day Standby  
Final Shut-In 120 ☐ Accessibility  
Sub Total 1958.00 MP/DST Disc't

Approved By Marklin M. Armstrong

Our Representative Mike Roberts

TriLOBITE TESTING Inc. shall not be liable for damaged of any kind of the property or personnel of the one for whom a test is made, or for any loss suffered or sustained, directly or indirectly, through the use of its equipment, or its statements or opinion concerning the results of any test, tools lost or damaged in the hole shall be paid for at cost by the party for whom the test is made.