
WILLIAMS PRODUCTION RMT INC - EBUS

**TR 41-34-597
TRAIL RIDGE
Garfield County , Colorado**

**Cement Surface Casing
26-Jul-2011**

Post Job Summary

The Road to Excellence Starts with Safety

Sold To #: 300721	Ship To #: 2864479	Quote #:	Sales Order #: 8307535
Customer: WILLIAMS PRODUCTION RMT INC - EBUS	Customer Rep: Geary, Scott		
Well Name: TR	Well #: 41-34-597	API/UWI #: 05-045-18342	
Field: TRAIL RIDGE	City (SAP): PARACHUTE	County/Parish: Garfield	State: Colorado
Lat: N 39.578 deg. OR N 39 deg. 34 min. 40.62 secs.	Long: W 108.256 deg. OR W -109 deg. 44 min. 38.994 secs.		
Contractor: H&P 278	Rig/Platform Name/Num: H&P 278		
Job Purpose: Cement Surface Casing			
Well Type: Development Well	Job Type: Cement Surface Casing		
Sales Person: SCOTT, KYLE	Srvc Supervisor: KUKUS, CRAIG	MBU ID Emp #: 369124	

Job Personnel

HES Emp Name	Exp Hrs	Emp #	HES Emp Name	Exp Hrs	Emp #	HES Emp Name	Exp Hrs	Emp #
BATH, KYLE Thomas	12	477632	BONE, JEFFERSON Eldon	12	491216	BURKE, BRENDAN Patrick	12	487782
HARDRICK, RAYMOND Frank	12	391324	HONE, AARON D	12	381285	KUKUS, CRAIG A	12	369124
WILKISON, KEVIN	12	891065						

Equipment

HES Unit #	Distance-1 way	HES Unit #	Distance-1 way	HES Unit #	Distance-1 way	HES Unit #	Distance-1 way
10829469	90 mile	10871245	90 mile	11360881	90 mile	11710582	90 mile
HBL-2000-3	90 mile						

Job Hours

Date	On Location Hours	Operating Hours	Date	On Location Hours	Operating Hours	Date	On Location Hours	Operating Hours
7/25/11	10	6	7/26/11	2				
TOTAL			Total is the sum of each column separately					

Job

Formation Name	Formation Depth (MD)	Top	Bottom	Form Type	Job depth MD	Job Depth TVD	Water Depth	Perforation Depth (MD)	From	To
				BHST	2891. ft	2891. ft				
				110 degF						

Well Data

Description	New / Used	Max pressure psig	Size in	ID in	Weight lbm/ft	Thread	Grade	Top MD ft	Bottom MD ft	Top TVD ft	Bottom TVD ft
-------------	------------	-------------------	---------	-------	---------------	--------	-------	-----------	--------------	------------	---------------

Sales/Rental/3rd Party (HES)

Description	Qty	Qty uom	Depth	Supplier
PLUG,CMTG,TOP,9 5/8,HWE,8.16 MIN/9.06 MA	1	EA		

Tools and Accessories

Type	Size	Qty	Make	Depth	Type	Size	Qty	Make	Depth	Type	Size	Qty	Make
Guide Shoe					Packer					Top Plug	9 5/8	1	HES
Float Shoe					Bridge Plug					Bottom Plug			
Float Collar					Retainer					SSR plug set			
Insert Float										Plug Container	9 5/8	1	HES
Stage Tool										Centralizers			

Miscellaneous Materials

Gelling Agt	Conc	Surfactant	Conc	Acid Type	Qty	Conc	%
Treatment Fld	Conc	Inhibitor	Conc	Sand Type	Size		Qty

Fluid Data

Stage/Plug #: 1

Fluid #	Stage Type	Fluid Name	Qty	Qty uom	Mixing Density lbm/gal	Yield ft ³ /sk	Mix Fluid Gal/sk	Rate bbl/min	Total Mix Fluid Gal/sk
1	Fresh Water		10.00	bbl	8.34	.0	.0	4	
2	SUPER FLUSH - XLC	SUPERFLUSH-XLC - SBM (549694)	50.00	bbl	11.	.0	.0	4	
3	Fresh Water		10.00	bbl	8.33	.0	.0	4	
4	Lead Cement	EXTENDACEM (TM) SYSTEM (452981)	1045.0	sacks	12.3	2.23	12.21	4	12.21
		POLY-E-FLAKE (101216940)							
		STEELSEAL, 50 LB BAG (101236842)							
		PHENO SEAL MEDIUM, 40 LB BAG (101307743)							
		WALL-NUT COARSE - 50 LB BAG (201097)							
	12.21	FRESH WATER							
5	Tail Cement	EXTENDACEM (TM) SYSTEM (452981)	250.0	sacks	12.6	2.07	11.04	4	11.04
		POLY-E-FLAKE (101216940)							
		STEELSEAL, 50 LB BAG (101236842)							
		PHENO SEAL MEDIUM, 40 LB BAG (101307743)							
		WALL-NUT COARSE - 50 LB BAG (201097)							
	11.04 Gal	FRESH WATER							
6	Displacement		220.00	bbl	8.34	.0	.0	4	
7	SUPER FLUSH 100	SUPER FLUSH 100 - SBM (12191)		bbl	11.7	.0	.0	1	
8	Top Out Cement	HALCEM (TM) SYSTEM (452986)	175.0	sacks	15.8	1.15	5.0	2	5.0
	5 Gal	FRESH WATER							
Calculated Values		Pressures		Volumes					
Displacement	220	Shut In: Instant		Lost Returns	0	Cement Slurry	542	Pad	
Top Of Cement	SURFACE	5 Min		Cement Returns	7	Actual Displacement	220	Treatment	
Frac Gradient		15 Min		Spacers	80	Load and Breakdown		Total Job	842
Rates									
Circulating	RIG	Mixing	4	Displacement	4	Avg. Job	4		
Cement Left In Pipe	Amount	44.1 ft	Reason	Shoe Joint					
Frac Ring # 1 @	ID	Frac ring # 2 @	ID	Frac Ring # 3 @	ID	Frac Ring # 4 @	ID		
The Information Stated Herein Is Correct				Customer Representative Signature					

The Road to Excellence Starts with Safety

Sold To #: 300721	Ship To #: 2864479	Quote #:	Sales Order #: 8307535
Customer: WILLIAMS PRODUCTION RMT INC - EBUS		Customer Rep: Geary, Scott	
Well Name: TR	Well #: 41-34-597	API/UWI #: 05-045-18342	
Field: TRAIL RIDGE	City (SAP): PARACHUTE	County/Parish: Garfield	State: Colorado
Legal Description:			
Lat: N 39.578 deg. OR N 39 deg. 34 min. 40.62 secs.		Long: W 108.256 deg. OR W -109 deg. 44 min. 38.994 secs.	
Contractor: H&P 278		Rig/Platform Name/Num: H&P 278	
Job Purpose: Cement Surface Casing			Ticket Amount:
Well Type: Development Well		Job Type: Cement Surface Casing	
Sales Person: SCOTT, KYLE		Srvc Supervisor: KUKUS, CRAIG	MBU ID Emp #: 369124

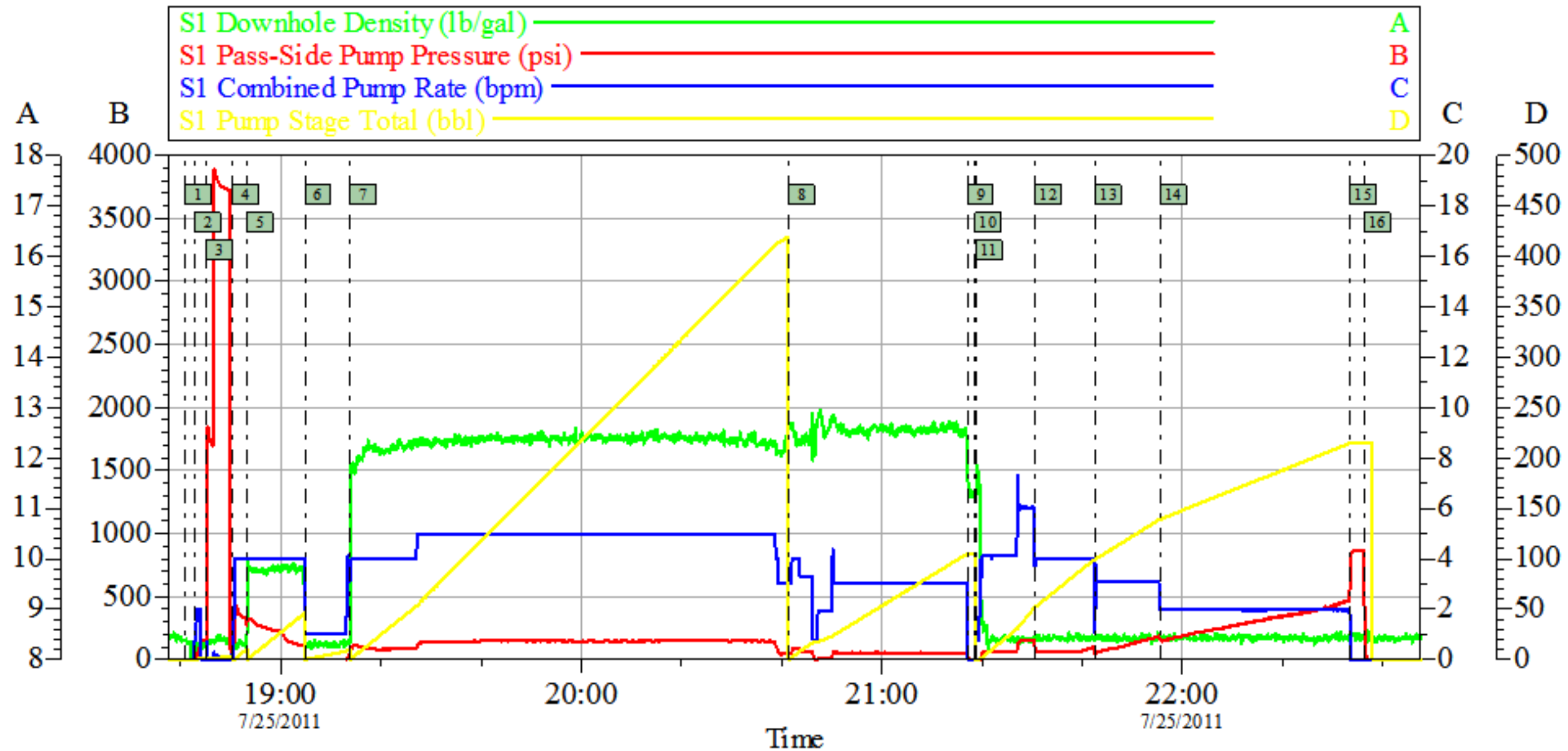
Activity Description	Date/Time	Cht #	Rate bbl/min	Volume bbl		Pressure psig		Comments
				Stage	Total	Tubing	Casing	
Call Out	07/25/2011 07:00							
Depart Yard Safety Meeting	07/25/2011 10:15							SAFETY MEETING INVOLVING THE ENTIRE CMT CREW
Arrive At Loc	07/25/2011 13:30							RIG WAS RUNNING CSG
Assessment Of Location Safety Meeting	07/25/2011 13:45							ASSESSMENT OF LOCATION INVOLVING THE ENTIRE CMT CREW
Pre-Rig Up Safety Meeting	07/25/2011 14:50							SAFETY MEETING INVOLVING THE ENTIRE CMT CREW
Rig-Up Equipment	07/25/2011 15:00							RIG UP IRON TO STAND PIPE AND WATER TO UP RIGHT AND DAY TANK
Circulate Well	07/25/2011 18:08							RIG CIRCULATED WELL/ PSI AT 1700 AND 2165 PSI
Pre-Job Safety Meeting	07/25/2011 18:25							SAFETY MEETING INVOLVING EVERYONE ON LOCATION
Start Job	07/25/2011 18:41							T.D 2891 FT TP 2890 FT SJ 44.10 FT OH 14 3/4 IN MUD WT 9.4 # PIPE 9 5/8 IN 36# J-55
Other	07/25/2011 18:42		2	2			168.0	FILL LINES WITH FRESH WATER
Pressure Test	07/25/2011 18:45		0.5			3500.0		PRESSURE TEST GOOD
Pump Spacer 1	07/25/2011 18:50		4	10			416.0	FRESH WATER SPACER

Activity Description	Date/Time	Cht #	Rate bbl/ min	Volume bbl		Pressure psig		Comments
				Stage	Total	Tubing	Casing	
Pump Spacer 1	07/25/2011 18:53		4	50			317.0	PUMP SUPER FLUSH XLC
Pump Spacer 1	07/25/2011 19:04		4	10			75.0	PUMP FRESH WATER SPACER
Pump Lead Cement	07/25/2011 19:13		4	415			170.0	PUMP 1045 SKS LEAD CEMENT AT 12.3 PPG 2.23 Y 12.21 GAL/SK
Pump Tail Cement	07/25/2011 20:41		3	92.2			75.0	PUMP 250 SKS TAIL CEMENT AT 12.6 PPG 2.07 Y 11.04 GAL/SK
Pump Displacement	07/25/2011 21:08		4	220			116.0	PUMP FRESH WATER DISPLACEMENT
Slow Rate	07/25/2011 21:30		3	110			197.0	SLOW RATE TO 2 BBL MIN AT 150 BBLS GONE PSI AT 165
Bump Plug	07/25/2011 22:33		2	220			875.0	PLUG LANDED AT 480 PSI / SUPER FLUSH WITH XLC DONE
Check Floats	07/25/2011 22:36							FLOATS HELD GOT 1 BBL BACK TO TANKS
Other	07/25/2011 22:51		2	10			131.0	PUMP SUGAR WATER THRU PARASITE LINE
Shutdown	07/25/2011 23:01							SWAP IRON TO PIT TO WASH UP
Other	07/25/2011 23:16							CLEAN UP
Pump Spacer 1	07/26/2011 00:07		1	10				START SUPER FLUSH 100 ON GRAVITY FEED
Pump Cement	07/26/2011 00:15		2	35			43.0	PUMP 175 SKS TOP OUT CEMENT AT 15.8 PPG 1.15 Y 5.0 GAL/SK
Pump Spacer 1	07/26/2011 00:53		2	1.5			43.0	WATER BEHIND
Shutdown	07/26/2011 00:55							SHUT DOWN/WASH UP TOPIT
End Job	07/26/2011 01:14							GOT 7 BBLS CEMENT TO SURFACE / SUPER FLUSH 100 DONE
Pre-Rig Down Safety Meeting	07/26/2011 01:30							SAFETY MEETING INVOLVING THE ENTIRE CMT CREW
Rig-Down Equipment	07/26/2011 01:40							USED 3 BAGS CAL CI AND REMAINDER TUF FIBER DOWN BACK SIDE WITH TOP OUT

Cementing Job Log

Activity Description	Date/Time	Cht #	Rate bbl/ min	Volume bbl		Pressure psig		Comments
				Stage	Total	Tubing	Casing	
Safety Meeting - Departing Location	07/26/2011 02:35							SAFETY MEETING INVOLVING THE ENTIRE CMT CREW
Comment	07/26/2011 02:40							THANK YOU FOR USING HALLIBURTON, CRAIG KUKUS AND CREW

WILLIAMS SURFACE HP 278



Local Event Log

1 START JOB	18:41:00	2 FILL LINES	18:42:47	3 TEST LINES	18:45:10
4 WATER SPACER	18:50:23	5 XLC SPACER	18:53:13	6 PUMP H2O SPACER	19:04:48
7 PUMP LEAD CEMENT	19:13:50	8 PUMP TAIL CEMENT	20:41:24	9 SHUT DOWN	21:17:09
10 DROP PLUG	21:18:37	11 PUMP DISPLACEMENT	21:18:49	12 SLOW RATE	21:30:43
13 SLOW RATE	21:42:41	14 SLOW RATE	21:55:36	15 BUMP PLUG	22:33:33
16 CHECK FLOATS	22:36:20				

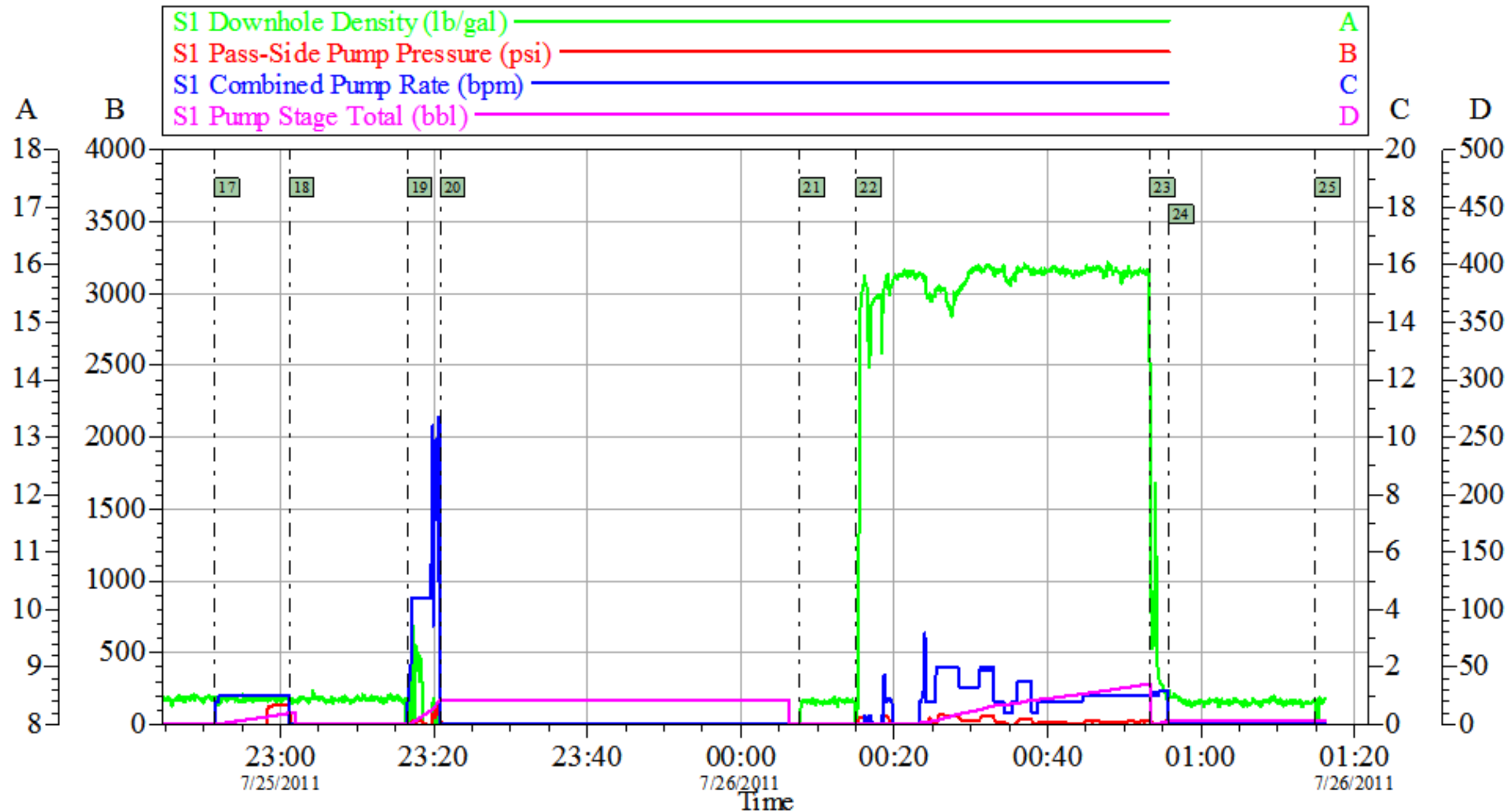
Customer: **WILLIAMS**
Well Description: **TR-41-34-597**
Company Rep: **SCOTT GEARY**

Job Date: **25-Jul-2011**
Job Type: **SURFACE**
Cement Supervisor: **CRAIG KUKUS**

Sales Order #: **8307535**
ADC Used: **YES**
Elite #/Operator: **ELITE 8 KYLE BATH**

OptiCem v6.4.8
26-Jul-11 01:07

WILLIAMS SURFACE HP 278



Local Event Log

17 PUMP SUGAR WATER PARASITE	7/25/2011 22:51:25	18 SHUT DOWN	7/25/2011 23:01:10	19 CLEAN UP	7/25/2011 23:16:31
20 SHUT DOWN	7/25/2011 23:20:51	21 START SUPER FLUSH	7/26/2011 00:07:41	22 PUMP TOP OUT CEMENT	7/26/2011 00:15:03
23 WATER BEHIND	7/26/2011 00:53:21	24 SHUT DOWN	7/26/2011 00:55:47	25 END JOB	7/26/2011 01:14:53

Customer: **WILLIAMS**
Well Description: **TR-41-34-597**
Company Rep: **SCOTT GEARY**

Job Date: **25-Jul-2011**
Job Type: **SURFACE**
Cement Supervisor: **CRAIG KUKUS**

Sales Order #: **8307535**
ADC Used: **YES**
Elite #/Operator: **ELITE 8 KYLE BATH**

OptiCem v6.4.8
26-Jul-11 01:16

Sales Order #: 8307535	Line Item: 10	Survey Conducted Date: 7/26/2011
Customer: WILLIAMS PRODUCTION RMT INC - EBUS		Job Type (BOM): CMT SURFACE CASING BOM
Customer Representative: SCOTT GEARY		API / UWI: (leave blank if unknown) 05-045-18342
Well Name: TR		Well Number: 41-34-597
Well Type: Development Well	Well Country: United States of America	
H2S Present:	Well State: Colorado	Well County: Garfield

Dear Customer,

We hope that you were satisfied with the service quality of this job performed by Halliburton. It is the aim of our management and service personnel to deliver equipment and service of a standard unmatched in the service sector of the energy industry.

Please take the time to let us know if our performance met with your satisfaction. Please be as critical as possible to ensure we constantly improve our service. Your comments are of great value to us and are intended for the exclusive use of Halliburton.

CUSTOMER SATISFACTION SURVEY

CATEGORY	CUSTOMER SATISFACTION RESPONSE	
Survey Conducted Date	The date the survey was conducted	7/26/2011
Survey Interviewer	The survey interviewer is the person who initiated the survey.	CRAIG KUKUS (HX19742)
Customer Participation	Did the customer participate in this survey? (Y/N)	Yes
Customer Representative	Enter the Customer representative name	SCOTT GEARY
HSE	Was our HSE performance satisfactory? Circle Y or N	Yes
Equipment	Were you satisfied with our Equipment? Circle Y or N	Yes
Personnel	Were you satisfied with our people? Circle Y or N	Yes
Customer Comment	Customer's Comment	GREAT JOB!
Job DVA	Did we provide job DVA above our normal service today? Circle Y or N	No
Time	Please enter hours in decimal format to nearest quarter hour.	
Other	Enter short text for other efficiencies gained.	
Customer Initials	Customer's Initials	
Please provide details	Please describe how the job efficiencies were gained.	

CUSTOMER SIGNATURE

Sales Order #: 8307535	Line Item: 10	Survey Conducted Date: 7/26/2011
Customer: WILLIAMS PRODUCTION RMT INC - EBUS		Job Type (BOM): CMT SURFACE CASING BOM
Customer Representative: SCOTT GEARY		API / UWI: (leave blank if unknown) 05-045-18342
Well Name: TR		Well Number: 41-34-597
Well Type: Development Well	Well Country: United States of America	
H2S Present:	Well State: Colorado	Well County: Garfield

KEY PERFORMANCE INDICATORS

General	
Survey Conducted Date The date the survey was conducted	7/26/2011

Cementing KPI Survey	
Type of Job Select the type of job. (Cementing or Non-Cementing)	0
Select the Maximum Deviation range for this Job What is the highest deviation for the job you just completed? This may not be the maximum well deviation.	Vertical
Total Operating Time (hours) Total Operating Hours Including Rig-up, Pumping, Rig-down. Enter in decimal format.	8.5
HSE Incident, Accident, Injury HSE Incident, Accident, Injury. This should be recordable incidents only.	No
Was the job purpose achieved? Was the job delivered correctly as per customer agreed design?	Yes
Operating Hours (Pumping Hours) Total number of hours pumping fluid on this job. Enter in decimal format.	7
Customer Non-Productive Rig Time (hrs) Lost time due to Halliburton in the start, execution, or completion of an ordered service or product, or delays in a follow-on service. Enter in decimal format. 0 if none.	0
Type of Rig Classification Job Was Performed Type Of Rig (classification) Job Was Performed On	Drilling Rig (Portable)
Number Of JSAs Performed Number Of Jsas Performed	6
Number of Unplanned Shutdowns Unplanned shutdown is when injection stops for any period of time.	0
Was this a Primary Cement Job (Yes / No)	Yes

Sales Order #: 8307535	Line Item: 10	Survey Conducted Date: 7/26/2011
Customer: WILLIAMS PRODUCTION RMT INC - EBUS		Job Type (BOM): CMT SURFACE CASING BOM
Customer Representative: SCOTT GEARY		API / UWI: (leave blank if unknown) 05-045-18342
Well Name: TR		Well Number: 41-34-597
Well Type: Development Well	Well Country: United States of America	
H2S Present:	Well State: Colorado	Well County: Garfield

Primary Cement Job= Casing job, Liner job, or Tie-back job.	
Did We Run Wiper Plugs? Did We Run Top And Bottom Casing Wiper Plugs?	Top
Mixing Density of Job Stayed in Designed Density Range (0-100%) Density Range defined as +/- .20 ppg. Calculation: Total BBLs cement mixed at designed density divided by total BBLs of cement multiplied by 100	97
Was Automated Density Control Used? Was Automated Density Control (ADC) Used ?	Yes
Pump Rate (percent) of Job Stayed At Designed Pump Rate Pump Rate range defined as +/- 1bbl/min. Calculation: Total BBLs of fluid pumped at the designed rate divided by Total BBLs of fluid pumped, multiplied by 100	97
Nbr of Remedial Sqz Jobs Rqd - Competition Number Of Remedial Squeeze Jobs Required After Primary Job Performed By Competition	0
Nbr of Remedial Plug Jobs Rqd - HES Number Of Remedial Plug Jobs Needed After Primary Plug Pumped By HES	0
Nbr of Remedial Sqz Jobs Rqd - HES Number Of Remedial Squeeze Jobs Required After Primary Job Performed By HES	0