

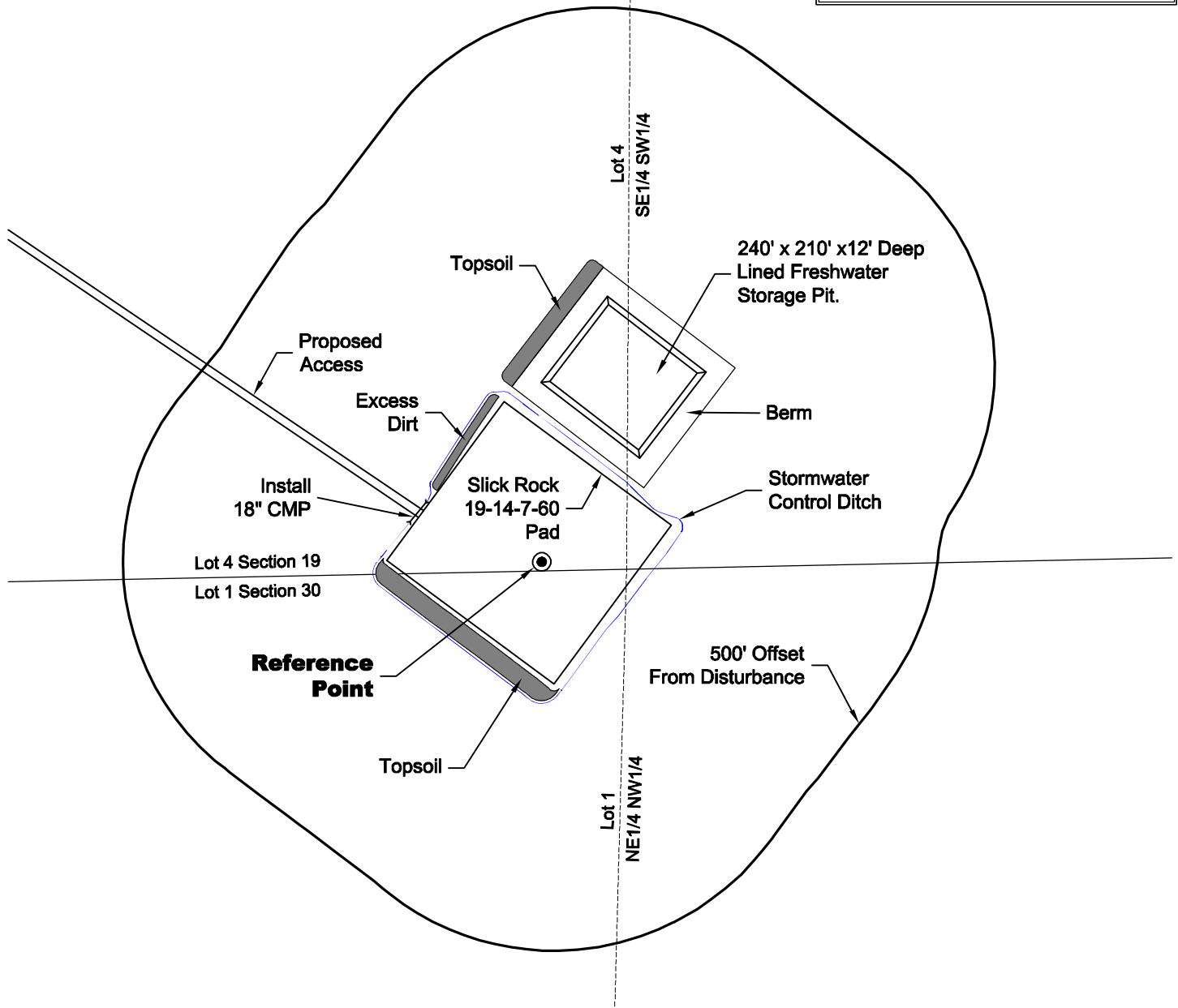
# LOCATION DRAWING

**VEGETATION:**  
PASTURE

**SURFACE USE:**  
GRAZING

## REFERENCE POINT

LATITUDE: 40.55341
LONGITUDE: -104.14245
FOOTAGE: 17 FSL 1243 FWL
GROUND ELEVATION: 5021.3
PDOP: 1.5 DATE: 11/4/2011
INSTRUMENT OPERATOR: MARC WOODARD



North

0 300 600

Graphic Scale in Feet  
1 inch = 300 feet

**DISTURBANCE ACREAGE:**  
4.7± DRILLING OPERATIONS  
2.3± FRESHWATER STORAGE PIT  
1.0± INTERIM RECLAIM

## NOTE:

ALL PRODUCTION FACILITIES WILL BE ON PAD.

11/10/11



LAND SURVEYING AND MAPPING  
LAFAYETTE - WINTER PARK  
Ph 303 666 0379 Fx 303 665 6320

**CARRIZO OIL & GAS, INC**  
**SLICK ROCK 19-14-7-60 PAD**

**LOT 4 SECTION 19 T7N R60W**  
**6th PM WELD COUNTY COLORADO**