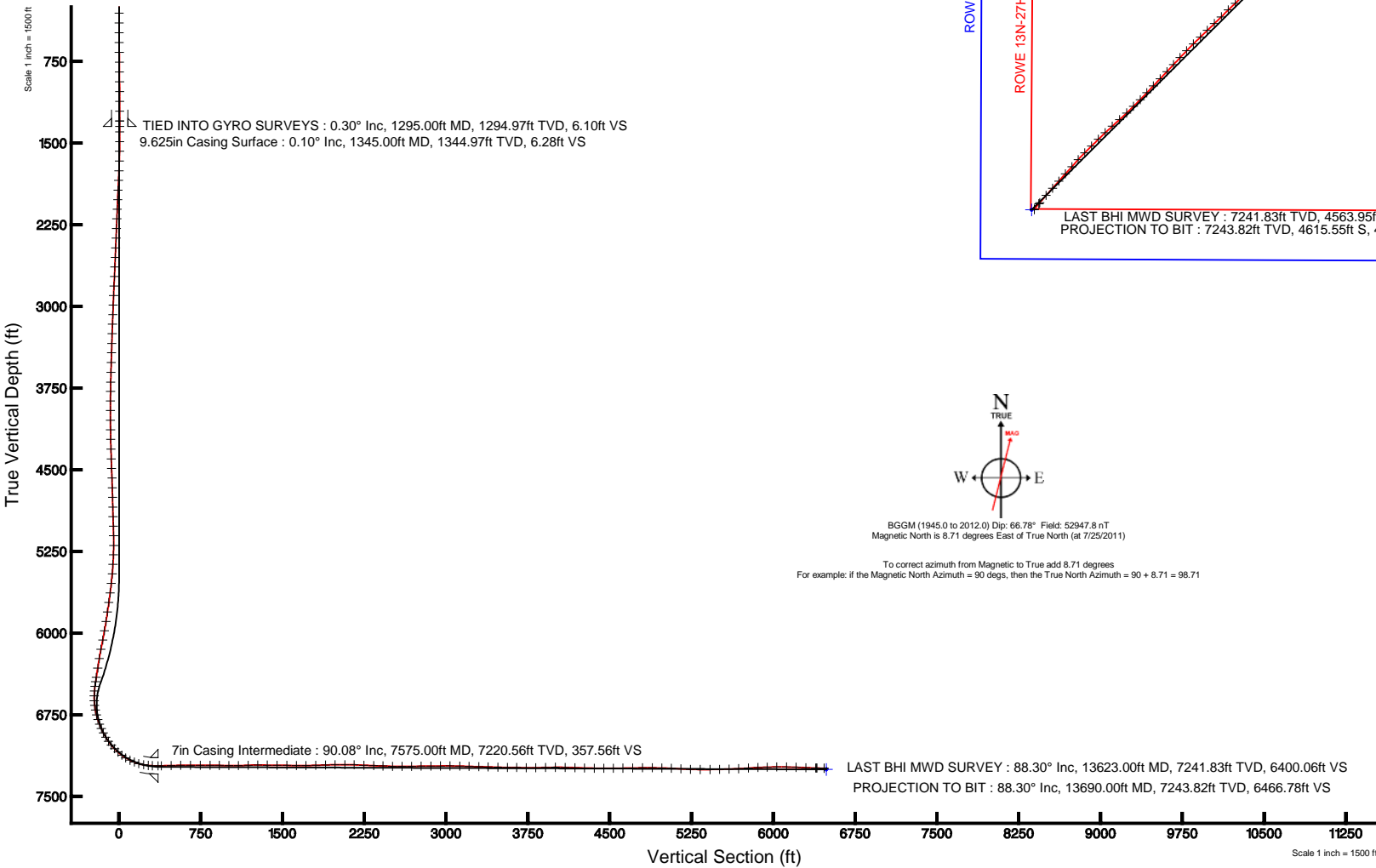


ANADARKO E&P COMPANY LP

Location: COLORADO Slot: SLOT#01 ROWE 13N-27HZ (200'FNL & 286'FEL, SEC.27)
 Field: WELD COUNTY (KERR MCGEE) Well: ROWE 13N-27HZ
 Facility: SEC.27-T1N-R65W Wellbore: ROWE 13N-27HZ PWB

Plot reference wellpath is ROWE 13N-27HZ (REV-C.0) PWP	
True vertical depths are referenced to XTREME 8 (RKB)	Grid System: NAD83 / Lambert Colorado SP, Northern Zone (501), US feet
Measured depths are referenced to XTREME 8 (RKB)	North Reference: True north
XTREME 8 (RKB) to Mean Sea Level: 5106 feet	Scale: True distance
Mean Sea Level to Mud line (At Slot: SLOT#01 ROWE 13N-27HZ (200'FNL & 286'FEL, SEC.27)): 0 feet	Depths are in feet
Coordinates are in feet referenced to Slot	Created by: cookdarm on 9/9/2011

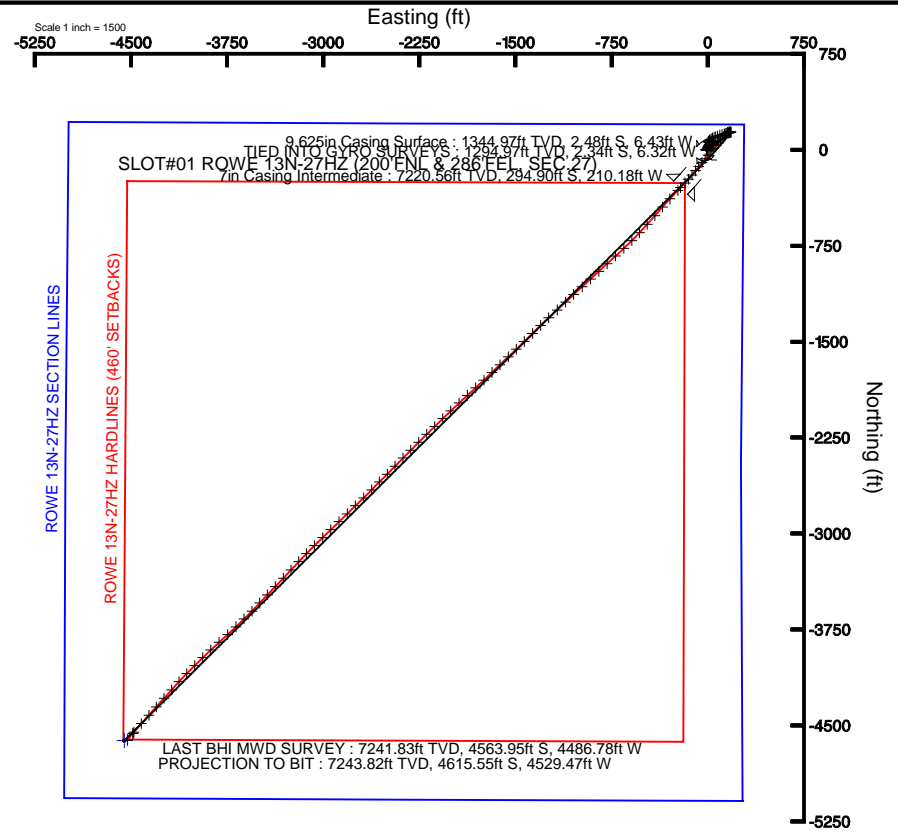


TIED INTO GYRO SURVEYS : 0.30° Inc, 1295.00ft MD, 1294.97ft TVD, 6.10ft VS
 9.625in Casing Surface : 0.10° Inc, 1345.00ft MD, 1344.97ft TVD, 6.28ft VS

7in Casing Intermediate : 90.08° Inc, 7575.00ft MD, 7220.56ft TVD, 357.56ft VS

LAST BHI MWD SURVEY : 88.30° Inc, 13623.00ft MD, 7241.83ft TVD, 6400.06ft VS
 PROJECTION TO BIT : 88.30° Inc, 13690.00ft MD, 7243.82ft TVD, 6466.78ft VS

Azimuth 224.59° with reference 0.00 N, 0.00 E



9.625in Casing Surface : 1344.97ft TVD, 2.48ft S, 6.43ft W
 TIED INTO GYRO SURVEYS : 0.30° Inc, 1294.97ft MD, 1294.97ft TVD, 2.34ft S, 6.32ft W
 7in Casing Intermediate : 7220.56ft TVD, 294.90ft S, 210.18ft W

ROWE 13N-27HZ SECTION LINES

ROWE 13N-27HZ HARDLINES (460' SETBACKS)

LAST BHI MWD SURVEY : 7241.83ft TVD, 4563.95ft S, 4486.78ft W
 PROJECTION TO BIT : 7243.82ft TVD, 4615.55ft S, 4529.47ft W



BGGM (1945.0 to 2012.0) Dip: 66.78° Field: 52947.8 nT
 Magnetic North is 8.71 degrees East of True North (at 7/25/2011)

To correct azimuth from Magnetic to True add 8.71 degrees
 For example: if the Magnetic North Azimuth = 90 degs, then the True North Azimuth = 90 + 8.71 = 98.71



Actual Wellpath Report

ROWE 13N-27HZ AWP

Page 1 of 7



REFERENCE WELLPATH IDENTIFICATION

Operator	ANADARKO E&P COMPANY LP	Slot	SLOT#01 ROWE 13N-27HZ (200'FNL & 286'FEL, SEC.27)
Area	COLORADO	Well	ROWE 13N-27HZ
Field	WELD COUNTY (KERR MCGEE)	Wellbore	ROWE 13N-27HZ AWB
Facility	SEC.27-T1N-R65W		

REPORT SETUP INFORMATION

Projection System	NAD83 / Lambert Colorado SP, Northern Zone (501), US feet	Software System	WellArchitect® 3.0.1
North Reference	True	User	Cookdanm
Scale	0.999964	Report Generated	9/9/2011 at 2:29:57 PM
Convergence at slot	0.55° East	Database/Source file	WellArchitectDB/ROWE_13N-27HZ_AWB.xml

WELLPATH LOCATION

	Local coordinates		Grid coordinates		Geographic coordinates	
	North[ft]	East[ft]	Easting[US ft]	Northing[US ft]	Latitude	Longitude
Slot Location	0.00	0.00	3240327.40	1254608.38	40°01'44.742"N	104°38'30.404"W
Facility Reference Pt			3240327.40	1254608.38	40°01'44.742"N	104°38'30.404"W
Field Reference Pt			3197771.84	1268891.29	40°04'09.600"N	104°47'36.000"W

WELLPATH DATUM

Calculation method	Minimum curvature	XTREME 8 (RKB) to Facility Vertical Datum	5106.00ft
Horizontal Reference Pt	Slot	XTREME 8 (RKB) to Mean Sea Level	5106.00ft
Vertical Reference Pt	XTREME 8 (RKB)	XTREME 8 (RKB) to Mud Line at Slot (SLOT#01 ROWE 13N-27HZ (200'FNL & 286'FEL, SEC.27))	5106.00ft
MD Reference Pt	XTREME 8 (RKB)	Section Origin	N 0.00, E 0.00 ft
Field Vertical Reference	Mean Sea Level	Section Azimuth	224.59°



Actual Wellpath Report

ROWE 13N-27HZ AWP

Page 2 of 7



REFERENCE WELLPATH IDENTIFICATION				
Operator	ANADARKO E&P COMPANY LP		Slot	SLOT#01 ROWE 13N-27HZ (200'FNL & 286'FEL, SEC.27)
Area	COLORADO		Well	ROWE 13N-27HZ
Field	WELD COUNTY (KERR MCGEE)		Wellbore	ROWE 13N-27HZ AWB
Facility	SEC.27-T1N-R65W			

WELLPATH DATA (157 stations) † = interpolated/extrapolated station

MD [ft]	Inclination [°]	Azimuth [°]	TVD [ft]	Vert Sect [ft]	North [ft]	East [ft]	Latitude	Longitude	DLS [°/100ft]	Comments
1295.00	0.300	218.110	1294.97	6.10	-2.34	-6.32	40°01'44.719"N	104°38'30.485"W	0.15	TIED INTO GYRO SURVEYS
1345.00†	0.101	222.270	1344.97	6.28	-2.48	-6.43	40°01'44.718"N	104°38'30.487"W	0.40	SURFACE 9.625" CASING
1395.00	0.100	29.700	1394.97	6.28	-2.47	-6.43	40°01'44.718"N	104°38'30.487"W	0.40	
1484.00	0.700	1.700	1483.97	5.80	-1.86	-6.38	40°01'44.724"N	104°38'30.486"W	0.69	
1573.00	1.300	8.700	1572.96	4.59	-0.32	-6.21	40°01'44.739"N	104°38'30.484"W	0.69	
1662.00	1.900	25.200	1661.92	2.38	2.01	-5.43	40°01'44.762"N	104°38'30.474"W	0.84	
1752.00	2.500	21.400	1751.85	-0.83	5.19	-4.08	40°01'44.793"N	104°38'30.456"W	0.69	
1841.00	2.600	28.700	1840.77	-4.56	8.77	-2.40	40°01'44.829"N	104°38'30.435"W	0.38	
1931.00	2.800	26.800	1930.67	-8.62	12.52	-0.43	40°01'44.866"N	104°38'30.410"W	0.24	
2019.00	2.700	28.800	2018.56	-12.66	16.26	1.54	40°01'44.903"N	104°38'30.384"W	0.16	
2107.00	2.700	24.500	2106.47	-16.60	19.96	3.40	40°01'44.939"N	104°38'30.360"W	0.23	
2195.00	2.500	25.500	2194.38	-20.36	23.58	5.08	40°01'44.975"N	104°38'30.339"W	0.23	
2283.00	2.300	24.000	2282.30	-23.83	26.92	6.63	40°01'45.008"N	104°38'30.319"W	0.24	
2371.00	2.600	28.900	2370.22	-27.40	30.28	8.31	40°01'45.041"N	104°38'30.297"W	0.42	
2461.00	2.800	23.800	2460.12	-31.42	34.08	10.18	40°01'45.079"N	104°38'30.273"W	0.35	
2550.00	2.200	30.800	2549.03	-35.11	37.54	11.94	40°01'45.113"N	104°38'30.251"W	0.76	
2638.00	2.200	38.500	2636.97	-38.43	40.31	13.85	40°01'45.140"N	104°38'30.226"W	0.34	
2726.00	2.900	33.100	2724.88	-42.29	43.50	16.12	40°01'45.172"N	104°38'30.197"W	0.84	
2813.00	2.700	42.600	2811.78	-46.50	46.85	18.71	40°01'45.205"N	104°38'30.164"W	0.58	
2901.00	2.300	47.400	2899.69	-50.33	49.57	21.41	40°01'45.232"N	104°38'30.129"W	0.51	
2988.00	2.100	56.200	2986.63	-53.64	51.64	24.02	40°01'45.252"N	104°38'30.095"W	0.45	
3076.00	2.200	45.700	3074.57	-56.91	53.71	26.57	40°01'45.273"N	104°38'30.062"W	0.46	
3163.00	2.100	53.300	3161.51	-60.15	55.83	29.04	40°01'45.294"N	104°38'30.031"W	0.35	
3251.00	1.900	61.400	3249.45	-63.14	57.50	31.62	40°01'45.310"N	104°38'29.998"W	0.39	
3340.00	1.800	51.800	3338.41	-65.94	59.07	34.01	40°01'45.326"N	104°38'29.967"W	0.37	
3427.00	2.000	61.100	3425.36	-68.75	60.64	36.41	40°01'45.341"N	104°38'29.936"W	0.42	
3517.00	1.600	56.000	3515.32	-71.49	62.11	38.83	40°01'45.356"N	104°38'29.905"W	0.48	
3607.00	1.600	57.000	3605.28	-73.95	63.49	40.92	40°01'45.369"N	104°38'29.878"W	0.03	
3696.00	1.200	53.000	3694.25	-76.08	64.73	42.71	40°01'45.382"N	104°38'29.855"W	0.46	
3783.00	1.000	68.500	3781.24	-77.68	65.56	44.14	40°01'45.390"N	104°38'29.837"W	0.41	
3869.00	1.100	74.700	3867.22	-79.08	66.05	45.64	40°01'45.395"N	104°38'29.817"W	0.18	
3957.00	0.400	113.700	3955.22	-79.92	66.15	46.74	40°01'45.396"N	104°38'29.803"W	0.94	
4047.00	1.000	207.300	4045.21	-79.28	65.33	46.66	40°01'45.388"N	104°38'29.804"W	1.22	
4135.00	0.900	229.000	4133.20	-77.86	64.19	45.79	40°01'45.376"N	104°38'29.815"W	0.42	
4223.00	1.200	225.000	4221.18	-76.25	63.08	44.62	40°01'45.365"N	104°38'29.830"W	0.35	
4313.00	1.600	246.600	4311.16	-74.14	61.92	42.80	40°01'45.354"N	104°38'29.854"W	0.73	
4402.00	2.200	249.700	4400.11	-71.44	60.83	40.05	40°01'45.343"N	104°38'29.889"W	0.68	
4490.00	2.700	265.200	4488.03	-68.34	60.07	36.40	40°01'45.336"N	104°38'29.936"W	0.94	
4579.00	2.700	262.100	4576.93	-65.08	59.61	32.24	40°01'45.331"N	104°38'29.990"W	0.16	
4668.00	1.800	255.900	4665.86	-62.23	58.98	28.81	40°01'45.325"N	104°38'30.034"W	1.05	
4756.00	2.000	262.300	4753.81	-59.83	58.44	25.94	40°01'45.320"N	104°38'30.070"W	0.33	
4845.00	2.200	274.900	4842.75	-57.51	58.38	22.70	40°01'45.319"N	104°38'30.112"W	0.56	
4934.00	2.500	273.900	4931.68	-55.16	58.65	19.06	40°01'45.322"N	104°38'30.159"W	0.34	
5021.00	3.000	274.900	5018.58	-52.46	58.98	14.90	40°01'45.325"N	104°38'30.212"W	0.58	
5109.00	2.400	295.300	5106.48	-50.39	59.96	10.94	40°01'45.335"N	104°38'30.263"W	1.28	



Actual Wellpath Report

ROWE 13N-27HZ AWP

Page 3 of 7



REFERENCE WELLPATH IDENTIFICATION				
Operator	ANADARKO E&P COMPANY LP		Slot	SLOT#01 ROWE 13N-27HZ (200'FNL & 286'FEL, SEC.27)
Area	COLORADO		Well	ROWE 13N-27HZ
Field	WELD COUNTY (KERR MCGEE)		Wellbore	ROWE 13N-27HZ AWB
Facility	SEC.27-T1N-R65W			

WELLPATH DATA (157 stations) † = interpolated/extrapolated station										
MD [ft]	Inclination [°]	Azimuth [°]	TVD [ft]	Vert Sect [ft]	North [ft]	East [ft]	Latitude	Longitude	DLS [°/100ft]	Comments
5198.00	2.100	316.700	5195.41	-49.83	61.95	8.14	40°01'45.354"N	104°38'30.299"W	1.00	
5285.00	2.700	359.500	5282.34	-51.34	65.15	7.03	40°01'45.386"N	104°38'30.314"W	2.11	
5373.00	3.800	32.900	5370.21	-55.65	69.68	8.59	40°01'45.431"N	104°38'30.294"W	2.44	
5461.00	5.200	42.900	5457.94	-62.50	75.05	12.89	40°01'45.484"N	104°38'30.238"W	1.82	
5547.00	6.600	55.500	5543.48	-71.25	80.70	19.62	40°01'45.540"N	104°38'30.152"W	2.21	
5635.00	7.500	60.900	5630.82	-81.72	86.36	28.81	40°01'45.595"N	104°38'30.034"W	1.27	
5725.00	7.900	56.300	5720.01	-93.42	92.65	39.08	40°01'45.658"N	104°38'29.902"W	0.82	
5813.00	9.200	63.200	5807.03	-106.01	99.17	50.40	40°01'45.722"N	104°38'29.756"W	1.88	
5901.00	10.200	73.500	5893.78	-119.50	104.56	64.15	40°01'45.775"N	104°38'29.579"W	2.27	
5989.00	11.500	72.400	5980.20	-134.08	109.43	79.98	40°01'45.823"N	104°38'29.376"W	1.50	
6075.00	12.400	72.200	6064.34	-149.84	114.84	96.94	40°01'45.877"N	104°38'29.158"W	1.05	
6163.00	11.700	69.400	6150.40	-166.31	120.87	114.29	40°01'45.936"N	104°38'28.935"W	1.04	
6250.00	10.900	75.300	6235.71	-181.39	126.06	130.51	40°01'45.988"N	104°38'28.726"W	1.61	
6339.00	10.500	80.000	6323.17	-195.24	129.60	146.63	40°01'46.023"N	104°38'28.519"W	1.08	
6426.00	11.000	78.900	6408.64	-208.55	132.58	162.58	40°01'46.052"N	104°38'28.314"W	0.62	
6467.00	11.300	79.900	6448.87	-215.06	134.04	170.38	40°01'46.067"N	104°38'28.214"W	0.87	
6510.00	8.200	76.200	6491.24	-221.11	135.51	177.51	40°01'46.081"N	104°38'28.122"W	7.35	
6553.00	4.100	54.100	6533.99	-225.24	137.14	181.73	40°01'46.097"N	104°38'28.068"W	10.84	
6597.00	3.500	351.100	6577.91	-227.59	139.39	182.80	40°01'46.119"N	104°38'28.054"W	9.09	
6641.00	5.800	291.400	6621.79	-227.52	141.53	180.52	40°01'46.141"N	104°38'28.083"W	11.45	
6685.00	9.200	270.200	6665.41	-224.18	142.35	174.93	40°01'46.149"N	104°38'28.155"W	9.84	
6729.00	13.500	257.600	6708.55	-217.41	141.26	166.39	40°01'46.138"N	104°38'28.265"W	11.23	
6774.00	15.900	243.400	6752.08	-207.17	137.37	155.74	40°01'46.100"N	104°38'28.402"W	9.58	
6819.00	18.800	227.300	6795.06	-194.08	129.69	144.89	40°01'46.024"N	104°38'28.541"W	12.41	
6864.00	20.500	214.900	6837.45	-179.06	118.30	135.05	40°01'45.911"N	104°38'28.668"W	9.98	
6908.00	24.000	213.800	6878.17	-162.67	104.54	125.66	40°01'45.775"N	104°38'28.789"W	8.01	
6953.00	26.400	217.800	6918.89	-143.74	89.03	114.44	40°01'45.622"N	104°38'28.933"W	6.54	
6998.00	30.900	220.000	6958.37	-122.28	72.27	100.87	40°01'45.456"N	104°38'29.107"W	10.27	
7043.00	35.400	221.000	6996.04	-97.74	53.57	84.88	40°01'45.271"N	104°38'29.313"W	10.07	
7087.00	40.400	220.600	7030.75	-70.78	33.11	67.23	40°01'45.069"N	104°38'29.540"W	11.38	
7132.00	43.700	220.300	7064.16	-40.72	10.18	47.68	40°01'44.843"N	104°38'29.791"W	7.35	
7176.00	48.500	220.200	7094.66	-9.12	-14.02	27.21	40°01'44.603"N	104°38'30.054"W	10.91	
7221.00	53.200	219.700	7123.06	25.65	-40.76	4.81	40°01'44.339"N	104°38'30.342"W	10.48	
7265.00	58.400	219.100	7147.78	61.88	-68.88	-18.28	40°01'44.061"N	104°38'30.639"W	11.87	
7310.00	63.400	218.900	7169.66	101.00	-99.43	-43.01	40°01'43.759"N	104°38'30.957"W	11.12	
7353.00	69.300	219.300	7186.90	140.20	-129.98	-67.85	40°01'43.458"N	104°38'31.276"W	13.75	
7397.00	74.000	218.200	7200.75	181.73	-162.54	-93.97	40°01'43.136"N	104°38'31.612"W	10.94	
7441.00	79.400	219.600	7210.87	224.32	-195.85	-120.86	40°01'42.807"N	104°38'31.958"W	12.66	
7486.00	84.000	220.900	7217.37	268.71	-229.82	-149.62	40°01'42.471"N	104°38'32.327"W	10.61	
7524.00	88.400	223.400	7219.88	306.58	-257.92	-175.06	40°01'42.193"N	104°38'32.654"W	13.31	
7575.00†	90.079	223.649	7220.56	357.56	-294.90	-210.18	40°01'41.828"N	104°38'33.106"W	3.33	INTERMEDIATE 7" CASING
7606.00	91.100	223.800	7220.24	388.56	-317.30	-231.60	40°01'41.606"N	104°38'33.381"W	3.33	
7696.00	91.300	222.900	7218.36	478.52	-382.73	-293.37	40°01'40.960"N	104°38'34.175"W	1.02	
7782.00	90.700	221.100	7216.86	564.41	-446.63	-350.90	40°01'40.328"N	104°38'34.915"W	2.21	
7872.00	90.600	221.800	7215.83	654.27	-514.08	-410.48	40°01'39.662"N	104°38'35.681"W	0.79	



Actual Wellpath Report

ROWE 13N-27HZ AWP

Page 4 of 7



REFERENCE WELLPATH IDENTIFICATION

Operator	ANADARKO E&P COMPANY LP	Slot	SLOT#01 ROWE 13N-27HZ (200'FNL & 286'FEL, SEC.27)
Area	COLORADO	Well	ROWE 13N-27HZ
Field	WELD COUNTY (KERR MCGEE)	Wellbore	ROWE 13N-27HZ AWB
Facility	SEC.27-T1N-R65W		

WELLPATH DATA (157 stations)

MD [ft]	Inclination [°]	Azimuth [°]	TVD [ft]	Vert Sect [ft]	North [ft]	East [ft]	Latitude	Longitude	DLS [°/100ft]	Comments
7962.00	90.000	221.900	7215.36	744.17	-581.12	-470.52	40°01'38.999"N	104°38'36.452"W	0.68	
8052.00	89.100	222.700	7216.07	834.09	-647.68	-531.09	40°01'38.341"N	104°38'37.231"W	1.34	
8138.00	89.300	225.000	7217.27	920.07	-709.69	-590.66	40°01'37.729"N	104°38'37.997"W	2.68	
8225.00	89.100	227.000	7218.49	1007.03	-770.12	-653.23	40°01'37.131"N	104°38'38.801"W	2.31	
8313.00	90.900	228.600	7218.49	1094.88	-829.23	-718.42	40°01'36.547"N	104°38'39.639"W	2.74	
8402.00	92.400	227.000	7215.92	1183.70	-888.98	-784.32	40°01'35.957"N	104°38'40.486"W	2.46	
8490.00	89.700	226.800	7214.31	1271.61	-949.09	-848.56	40°01'35.363"N	104°38'41.312"W	3.08	
8578.00	89.500	227.300	7214.92	1359.52	-1009.05	-912.97	40°01'34.770"N	104°38'42.140"W	0.61	
8668.00	89.900	227.600	7215.40	1449.41	-1069.91	-979.27	40°01'34.169"N	104°38'42.992"W	0.56	
8757.00	88.300	226.500	7216.79	1538.31	-1130.54	-1044.40	40°01'33.569"N	104°38'43.829"W	2.18	
8845.00	89.700	226.900	7218.33	1626.24	-1190.88	-1108.43	40°01'32.973"N	104°38'44.652"W	1.65	
8934.00	90.600	227.200	7218.10	1715.15	-1251.52	-1173.57	40°01'32.374"N	104°38'45.490"W	1.07	
9024.00	91.700	226.700	7216.29	1805.06	-1312.95	-1239.33	40°01'31.767"N	104°38'46.335"W	1.34	
9112.00	92.000	225.700	7213.45	1892.98	-1373.82	-1302.81	40°01'31.165"N	104°38'47.151"W	1.19	
9201.00	90.900	225.700	7211.20	1981.93	-1435.96	-1366.48	40°01'30.551"N	104°38'47.969"W	1.24	
9289.00	90.200	225.800	7210.35	2069.91	-1497.36	-1429.52	40°01'29.944"N	104°38'48.779"W	0.80	
9376.00	88.100	226.000	7211.64	2156.87	-1557.90	-1491.98	40°01'29.346"N	104°38'49.582"W	2.42	
9464.00	87.000	226.700	7215.40	2244.75	-1618.58	-1555.60	40°01'28.746"N	104°38'50.400"W	1.48	
9554.00	88.300	226.500	7219.10	2334.61	-1680.37	-1620.93	40°01'28.136"N	104°38'51.240"W	1.46	
9640.00	87.700	225.800	7222.10	2420.53	-1739.91	-1682.91	40°01'27.547"N	104°38'52.036"W	1.07	
9728.00	87.900	226.200	7225.47	2508.44	-1800.99	-1746.17	40°01'26.943"N	104°38'52.850"W	0.51	
9816.00	90.800	227.700	7226.47	2596.34	-1861.05	-1810.46	40°01'26.350"N	104°38'53.676"W	3.71	
9903.00	90.500	227.200	7225.49	2683.23	-1919.88	-1874.55	40°01'25.769"N	104°38'54.500"W	0.67	
9991.00	91.100	227.100	7224.26	2771.13	-1979.72	-1939.06	40°01'25.177"N	104°38'55.329"W	0.69	
10081.00	90.200	225.900	7223.24	2861.07	-2041.67	-2004.34	40°01'24.565"N	104°38'56.168"W	1.67	
10168.00	91.000	226.000	7222.33	2948.04	-2102.16	-2066.86	40°01'23.967"N	104°38'56.971"W	0.93	
10256.00	89.300	225.500	7222.09	3036.02	-2163.56	-2129.89	40°01'23.360"N	104°38'57.782"W	2.01	
10344.00	88.700	225.900	7223.63	3123.99	-2225.01	-2192.86	40°01'22.753"N	104°38'58.591"W	0.82	
10431.00	88.000	224.700	7226.14	3210.95	-2286.18	-2254.68	40°01'22.148"N	104°38'59.385"W	1.60	
10519.00	89.000	224.500	7228.44	3298.91	-2348.81	-2316.44	40°01'21.529"N	104°39'00.179"W	1.16	
10605.00	87.700	224.000	7230.92	3384.88	-2410.39	-2376.43	40°01'20.921"N	104°39'00.950"W	1.62	
10695.00	88.300	224.600	7234.06	3474.82	-2474.76	-2439.25	40°01'20.285"N	104°39'01.758"W	0.94	
10782.00	90.200	225.600	7235.20	3561.80	-2536.16	-2500.86	40°01'19.678"N	104°39'02.550"W	2.47	
10868.00	88.400	224.500	7236.25	3647.79	-2596.91	-2561.72	40°01'19.077"N	104°39'03.332"W	2.45	
10955.00	88.200	223.900	7238.83	3734.75	-2659.26	-2622.35	40°01'18.461"N	104°39'04.111"W	0.73	
11043.00	91.700	226.100	7238.90	3822.73	-2721.47	-2684.56	40°01'17.846"N	104°39'04.910"W	4.70	
11132.00	91.700	226.100	7236.26	3911.66	-2783.15	-2748.66	40°01'17.237"N	104°39'05.734"W	0.00	
11222.00	90.500	225.200	7234.54	4001.62	-2846.05	-2813.00	40°01'16.615"N	104°39'06.561"W	1.67	
11311.00	88.500	226.400	7235.31	4090.59	-2908.09	-2876.80	40°01'16.002"N	104°39'07.381"W	2.62	
11401.00	88.400	225.600	7237.75	4180.53	-2970.59	-2941.52	40°01'15.384"N	104°39'08.213"W	0.90	
11490.00	88.100	226.000	7240.46	4269.47	-3032.61	-3005.29	40°01'14.771"N	104°39'09.033"W	0.56	
11579.00	89.000	225.800	7242.72	4358.42	-3094.52	-3069.18	40°01'14.159"N	104°39'09.854"W	1.04	
11668.00	89.900	223.300	7243.57	4447.41	-3157.94	-3131.61	40°01'13.532"N	104°39'10.656"W	2.99	
11755.00	90.500	223.800	7243.27	4534.39	-3221.00	-3191.55	40°01'12.909"N	104°39'11.426"W	0.90	
11842.00	90.700	222.300	7242.36	4621.35	-3284.57	-3250.94	40°01'12.281"N	104°39'12.190"W	1.74	



Actual Wellpath Report

ROWE 13N-27HZ AWP

Page 5 of 7



REFERENCE WELLPATH IDENTIFICATION				
Operator	ANADARKO E&P COMPANY LP		Slot	SLOT#01 ROWE 13N-27HZ (200'FNL & 286'FEL, SEC.27)
Area	COLORADO		Well	ROWE 13N-27HZ
Field	WELD COUNTY (KERR MCGEE)		Wellbore	ROWE 13N-27HZ AWB
Facility	SEC.27-T1N-R65W			

WELLPATH DATA (157 stations)										
MD [ft]	Inclination [°]	Azimuth [°]	TVD [ft]	Vert Sect [ft]	North [ft]	East [ft]	Latitude	Longitude	DLS [°/100ft]	Comments
11932.00	91.200	223.600	7240.86	4711.30	-3350.43	-3312.25	40°01'11.630"N	104°39'12.978"W	1.55	
12021.00	90.900	223.800	7239.23	4800.27	-3414.76	-3373.73	40°01'10.994"N	104°39'13.768"W	0.41	
12111.00	89.100	223.300	7239.23	4890.25	-3479.99	-3435.73	40°01'10.349"N	104°39'14.565"W	2.08	
12199.00	88.500	223.100	7241.08	4978.21	-3544.13	-3495.96	40°01'09.716"N	104°39'15.338"W	0.72	
12287.00	87.200	225.000	7244.38	5066.14	-3607.33	-3557.10	40°01'09.091"N	104°39'16.124"W	2.61	
12374.00	86.800	225.700	7248.93	5153.01	-3668.38	-3618.91	40°01'08.487"N	104°39'16.919"W	0.93	
12462.00	87.800	225.800	7253.08	5240.89	-3729.72	-3681.87	40°01'07.881"N	104°39'17.728"W	1.14	
12551.00	89.600	227.600	7255.10	5329.80	-3790.74	-3746.62	40°01'07.278"N	104°39'18.560"W	2.86	
12641.00	90.600	227.700	7254.94	5419.67	-3851.36	-3813.13	40°01'06.679"N	104°39'19.415"W	1.12	
12730.00	91.300	226.500	7253.46	5508.57	-3911.94	-3878.32	40°01'06.080"N	104°39'20.252"W	1.56	
12817.00	91.900	226.000	7251.03	5595.50	-3972.08	-3941.14	40°01'05.486"N	104°39'21.060"W	0.90	
12905.00	93.300	225.100	7247.04	5683.40	-4033.64	-4003.89	40°01'04.877"N	104°39'21.866"W	1.89	
12993.00	94.000	224.900	7241.44	5771.21	-4095.73	-4065.99	40°01'04.264"N	104°39'22.664"W	0.83	
13081.00	92.400	222.600	7236.53	5859.06	-4159.20	-4126.74	40°01'03.636"N	104°39'23.445"W	3.18	
13167.00	91.800	221.500	7233.38	5944.92	-4223.01	-4184.30	40°01'03.006"N	104°39'24.184"W	1.46	
13255.00	90.500	221.900	7231.61	6032.78	-4288.70	-4242.83	40°01'02.356"N	104°39'24.937"W	1.55	
13345.00	88.900	221.900	7232.08	6122.68	-4355.69	-4302.93	40°01'01.694"N	104°39'25.709"W	1.78	
13433.00	87.900	222.300	7234.54	6210.56	-4420.96	-4361.91	40°01'01.049"N	104°39'26.467"W	1.22	
13521.00	87.600	221.300	7237.99	6298.39	-4486.51	-4420.52	40°01'00.401"N	104°39'27.220"W	1.19	
13611.00	88.000	220.000	7241.45	6388.11	-4554.74	-4479.10	40°00'59.727"N	104°39'27.973"W	1.51	
13623.00	88.300	219.600	7241.83	6400.06	-4563.95	-4486.78	40°00'59.636"N	104°39'28.071"W	4.17	LAST BHI MWD SURVEY
13690.00	88.300	219.600	7243.82	6466.78	-4615.55	-4529.47	40°00'59.126"N	104°39'28.620"W	0.00	PROJECTION TO BIT

HOLE & CASING SECTIONS - Ref Wellbore: ROWE 13N-27HZ AWB Ref Wellpath: ROWE 13N-27HZ AWP									
String/Diameter	Start MD [ft]	End MD [ft]	Interval [ft]	Start TVD [ft]	End TVD [ft]	Start N/S [ft]	Start E/W [ft]	End N/S [ft]	End E/W [ft]
9.625in Casing Surface	17.00	1345.00	1328.00	17.00	1344.97	0.00	0.00	-2.48	-6.43
8.75in Open Hole	1345.00	7575.00	6230.00	1344.97	7220.56	-2.48	-6.43	-294.90	-210.18
7in Casing Intermediate	17.00	7575.00	7558.00	17.00	7220.56	0.00	0.00	-294.90	-210.18
6.125in Open Hole	7575.00	13690.00	6115.00	7220.56	7243.82	-294.90	-210.18	-4615.55	-4529.47



Actual Wellpath Report

ROWE 13N-27HZ AWP

Page 6 of 7



REFERENCE WELLPATH IDENTIFICATION

Operator	ANADARKO E&P COMPANY LP	Slot	SLOT#01 ROWE 13N-27HZ (200'FNL & 286'FEL, SEC.27)
Area	COLORADO	Well	ROWE 13N-27HZ
Field	WELD COUNTY (KERR MCGEE)	Wellbore	ROWE 13N-27HZ AWB
Facility	SEC.27-T1N-R65W		

TARGETS

Name	MD [ft]	TVD [ft]	North [ft]	East [ft]	Grid East [US ft]	Grid North [US ft]	Latitude	Longitude	Shape
ROWE 13N-27HZ SECTION LINES		0.00	0.00	0.00	3240327.40	1254608.38	40°01'44.742"N	104°38'30.404"W	polygon
ROWE 13N-27HZ BHL ON PLAT (460'FSL & 460'FWL, REV-1)		7254.00	-4619.77	-4553.91	3235818.59	1249944.93	40°00'59.084"N	104°39'28.934"W	point
ROWE 13N-27HZ HARDLINES (460' SETBACKS)		7254.00	0.00	0.00	3240327.40	1254608.38	40°01'44.742"N	104°38'30.404"W	polygon
ROWE CENTER POINT		7254.00	-2443.82	-2359.71	3237991.54	1252141.93	40°01'20.590"N	104°39'00.735"W	point

WELLPATH COMPOSITION - Ref Wellbore: ROWE 13N-27HZ AWB Ref Wellpath: ROWE 13N-27HZ AWP

Start MD [ft]	End MD [ft]	Positional Uncertainty Model	Log Name/Comment	Wellbore
17.00	1295.00	Gyrodata standard - Drop gyro or Multi-shot	GYRO SURVEYS <125-1295>	ROWE 13N-27HZ AWB
1295.00	13623.00	NaviTrak (Standard)	BHI MWD SURVEYS <1395-13623>	ROWE 13N-27HZ AWB
13623.00	13690.00	Blind Drilling (std)	Projection to bit	ROWE 13N-27HZ AWB



Actual Wellpath Report

ROWE 13N-27HZ AWP

Page 7 of 7



REFERENCE WELLPATH IDENTIFICATION

Operator	ANADARKO E&P COMPANY LP	Slot	SLOT#01 ROWE 13N-27HZ (200'FNL & 286'FEL, SEC.27)
Area	COLORADO	Well	ROWE 13N-27HZ
Field	WELD COUNTY (KERR MCGEE)	Wellbore	ROWE 13N-27HZ AWB
Facility	SEC.27-T1N-R65W		

WELLPATH COMMENTS

MD [ft]	Inclination [°]	Azimuth [°]	TVD [ft]	Comment
1295.00	0.300	218.110	1294.97	TIED INTO GYRO SURVEYS
1345.00	0.101	222.270	1344.97	SURFACE 9.625" CASING
7575.00	90.079	223.649	7220.56	INTERMEDIATE 7" CASING
13623.00	88.300	219.600	7241.83	LAST BHI MWD SURVEY
13690.00	88.300	219.600	7243.82	PROJECTION TO BIT