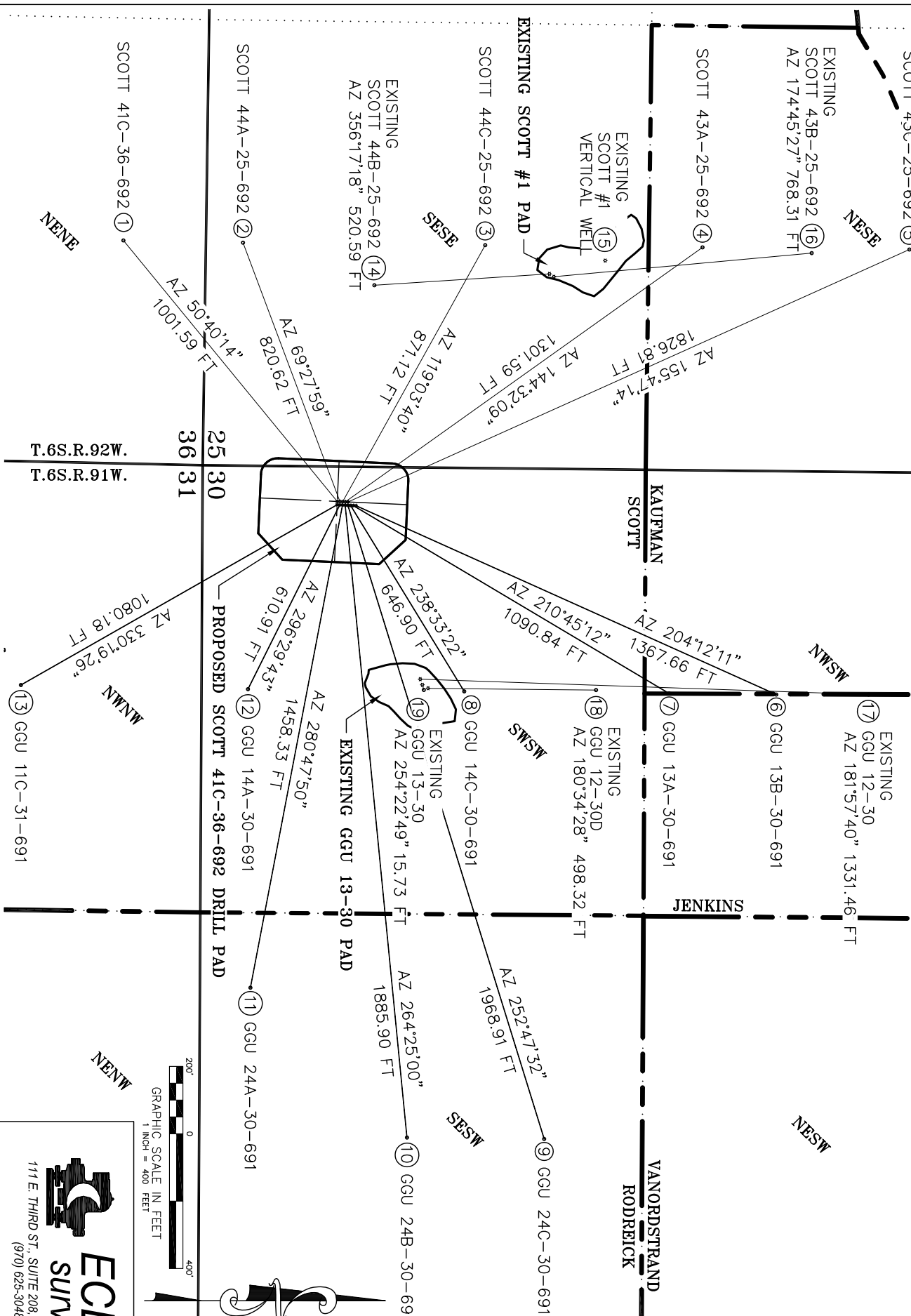


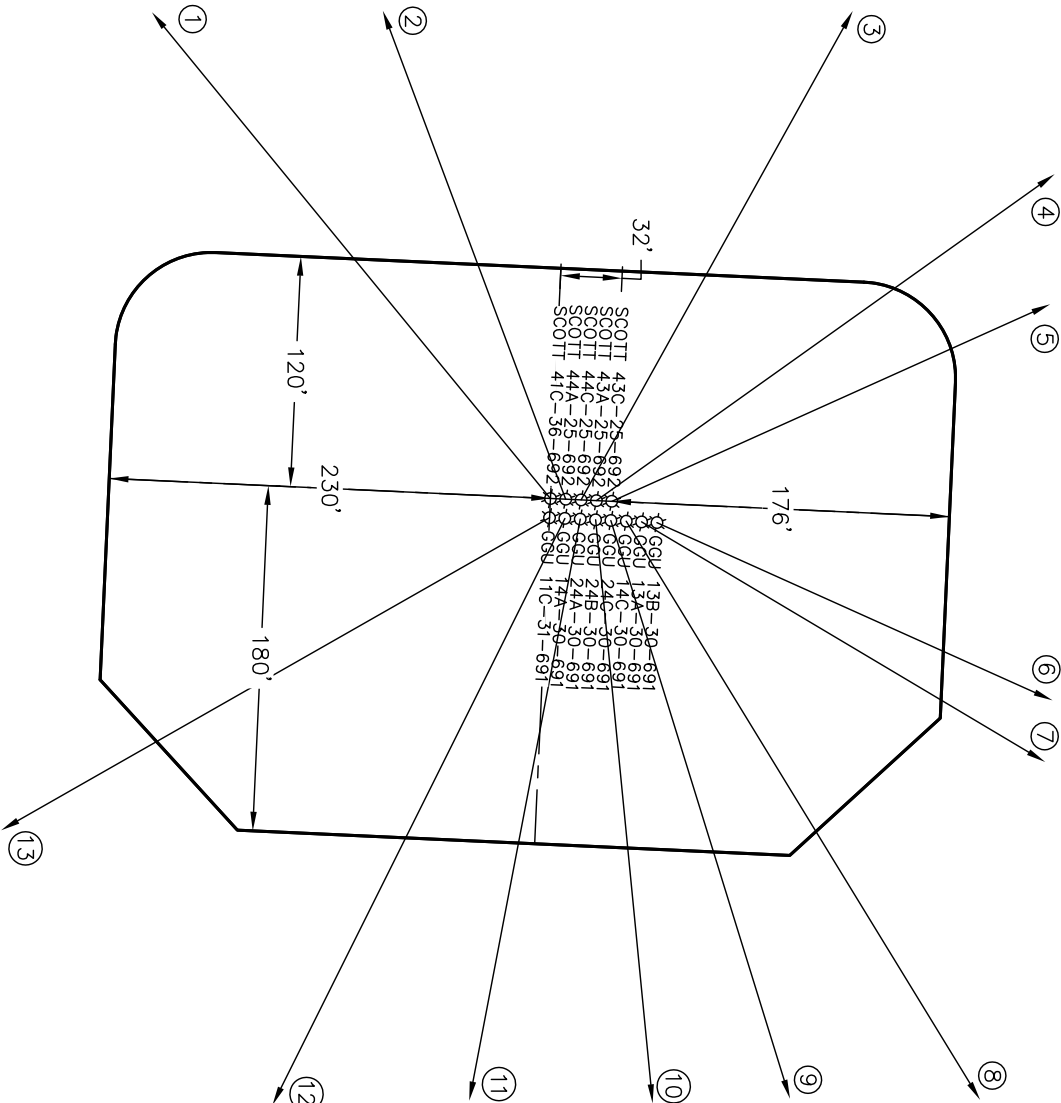
SURFACE HOLE LOCATIONS					BOTTOM HOLE LOCATIONS				
	WELL NAME	FSL	FWL	NORTHING	EASTING	LATITUDE	LONGITUDE	FSL	FEL
1	SCOTT 41C-36-692	400	103	1611087.9	2405834.4	39.492308	-107.605552	245 FNL	662
2	SCOTT 44A-25-692	408	104	1611095.8	2405834.8	39.492330	-107.605551	110	662
3	SCOTT 44C-25-692	416	104	1611103.8	2405835.1	39.492352	-107.605550	829	662
4	SCOTT 43A-25-692	424	104	1611111.8	2405835.5	39.492374	-107.605550	1474	662
5	SCOTT 43C-25-692	432	104	1611119.8	2405835.8	39.492396	-107.605549	2088	662
6	GGU 13B-30-691	456	115	1611143.3	2405846.9	39.492461	-107.605512	1706	663 FWL
7	GGU 13A-30-691	448	115	1611135.4	2405846.6	39.492439	-107.605512	1388	663 FWL
8	GGU 14C-30-691	440	115	1611127.4	2405846.2	39.492417	-107.605513	780	663 FWL
9	GGU 24C-30-691	432	114	1611119.4	2405845.8	39.492395	-107.605514	1024	1989 FWL
10	GGU 24B-30-691	424	114	1611111.4	2405845.5	39.492373	-107.605514	617	1985 FWL
11	GGU 24A-30-691	416	114	1611103.4	2405845.1	39.492351	-107.605515	150	1549 FWL
12	GGU 14A-30-691	408	114	1611095.4	2405844.7	39.492329	-107.605516	138	663 FWL
13	GGU 11C-31-691	400	113	1611087.4	2405844.4	39.492307	-107.605516	536 FNL	664 FWL
14	EXISTING SCOTT-44B-25-692	1021	579 FEL	1611717.5	2405158.9	39.493993	-107.607996	502	540
15	EXISTING DUANE-SCOTT#1	1186	620 FEL	1611883.2	2405119.3	39.494445	-107.608150	1186	620
16	EXISTING SCOTT-43B-25-692	1034	570 FEL	1611730.9	2405167.4	39.494031	-107.607967	1798	648
17	EXISTING GGU-12-30	649	628	1611334.1	2406361.9	39.493017	-107.603703	1980	660 FWL
18	EXISTING GGU-12-30D	672	655	1611357.6	2406389.1	39.493083	-107.603609	1171	655 FWL
19	EXISTING GGU-13-30	655	645	1611340.6	2406378.7	39.493036	-107.603644	660	660 FWL



WELL INTERFERENCE EXHIBIT

SCOTT 41C-36-692 PAD

NAD 83 COLORADO CENTRAL ZONE
SURFACE HOLE LOCATIONS



*NOTE: THE FINISHED PAD ELEVATION IS 5922.0'
PRODUCTION PAD ELEVATION IS 5912.0'

ECLIPSE
surveying

111 E. THIRD ST., SUITE 208 RIFLE, CO 81650
(970) 625-3048

REV. DATE: 1" = 400'
SCALE: 11/3/11
DATE: 1 OF 1
SHEET: SCOTT SWSW
PROJECT: TAB
DFT:

Bill Barrett Corporation
SW1/4SW1/4, SECTION 30
T. 6 S., R. 91 W. of the 6th. P.M.
GARFIELD COUNTY, COLORADO