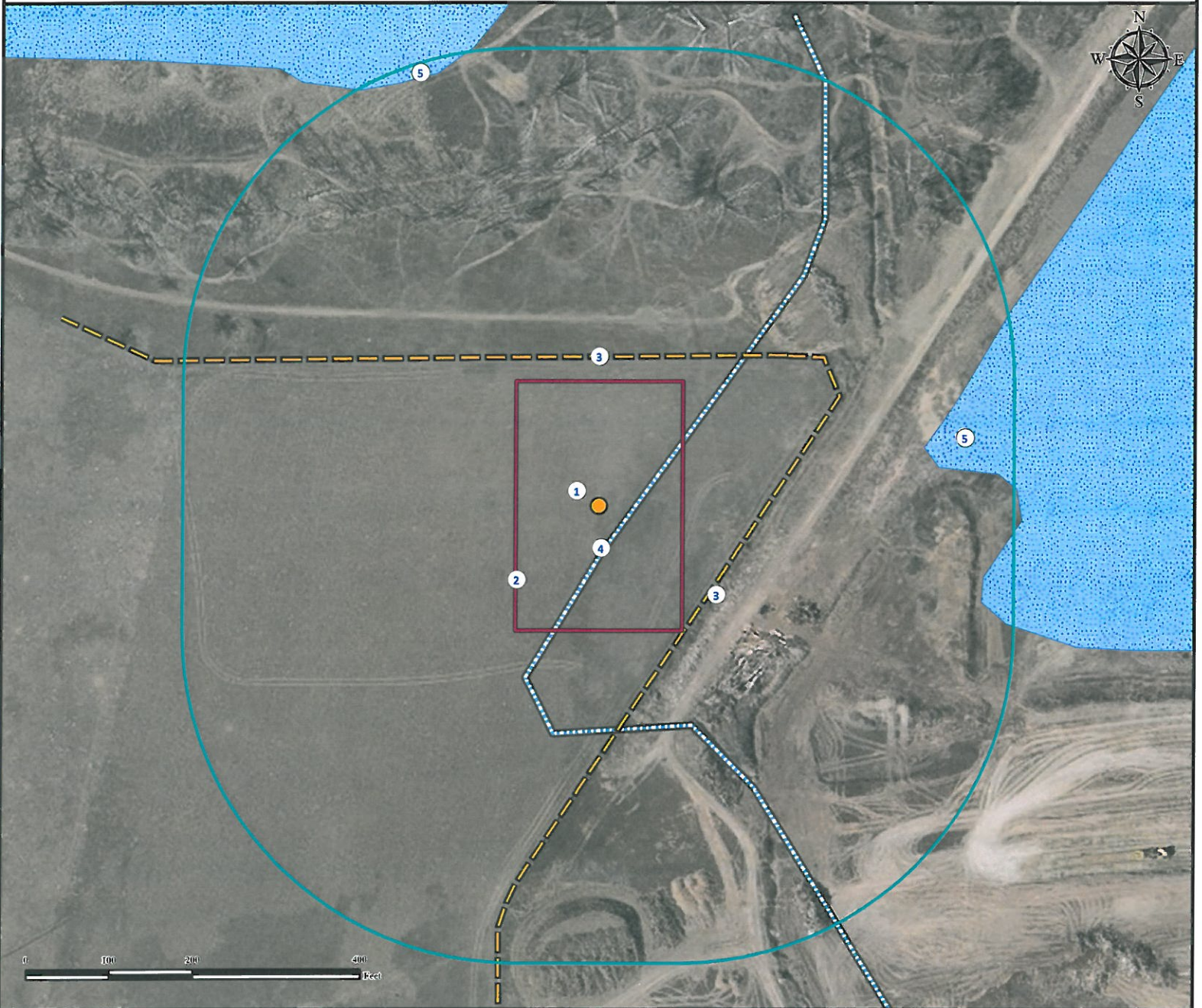


# Location Drawing

## ZARLENGO 6-4

**SE¼ NW¼ SECTION 04, TOWNSHIP 1 SOUTH, RANGE 67 WEST OF THE 6TH PRINCIPAL MERIDIAN**



1. Proposed well ZARLENGO 6-4.
2. Operational disturbance area.
3. Fences are ±180' N and ±167' SE.
4. Ditch is ±35' S. Feature dry and not in this location at time of mapping.
5. Reservoirs are ±397' NE and ±556' NW. Feature dry at time of mapping.

### Legend

- |               |                  |                 |
|---------------|------------------|-----------------|
| Proposed Well | Disturbance Area | Fence           |
| Reservoir     | 400' Radius      | NDIS Water Line |

### Reference Location

\*\* All Measurements are Made from Reference Well ZARLENGO 6-4 \*\*  
 Lat: 39.995033° Long: -104.896817° (NAD83)  
 Elevation: 5155 Feet

Surface Use: Pasture

**Use our resources to find yours!**  
[www.petro-fs.com](http://www.petro-fs.com)  
 (303) 928-7128

Field Date: 11/1/2011  
 Drafting Date: 11/15/2011  
 Drafter: DMM  
 Checked By: BHF

Data Sources:  
 - Aerial courtesy of NAIP (2009)  
 - Water lines courtesy NDIS  
 - Reservoir data courtesy of NHD

Prepared for:

**BAYSWATER**  
 EXPLORATION AND PRODUCTION, LLC