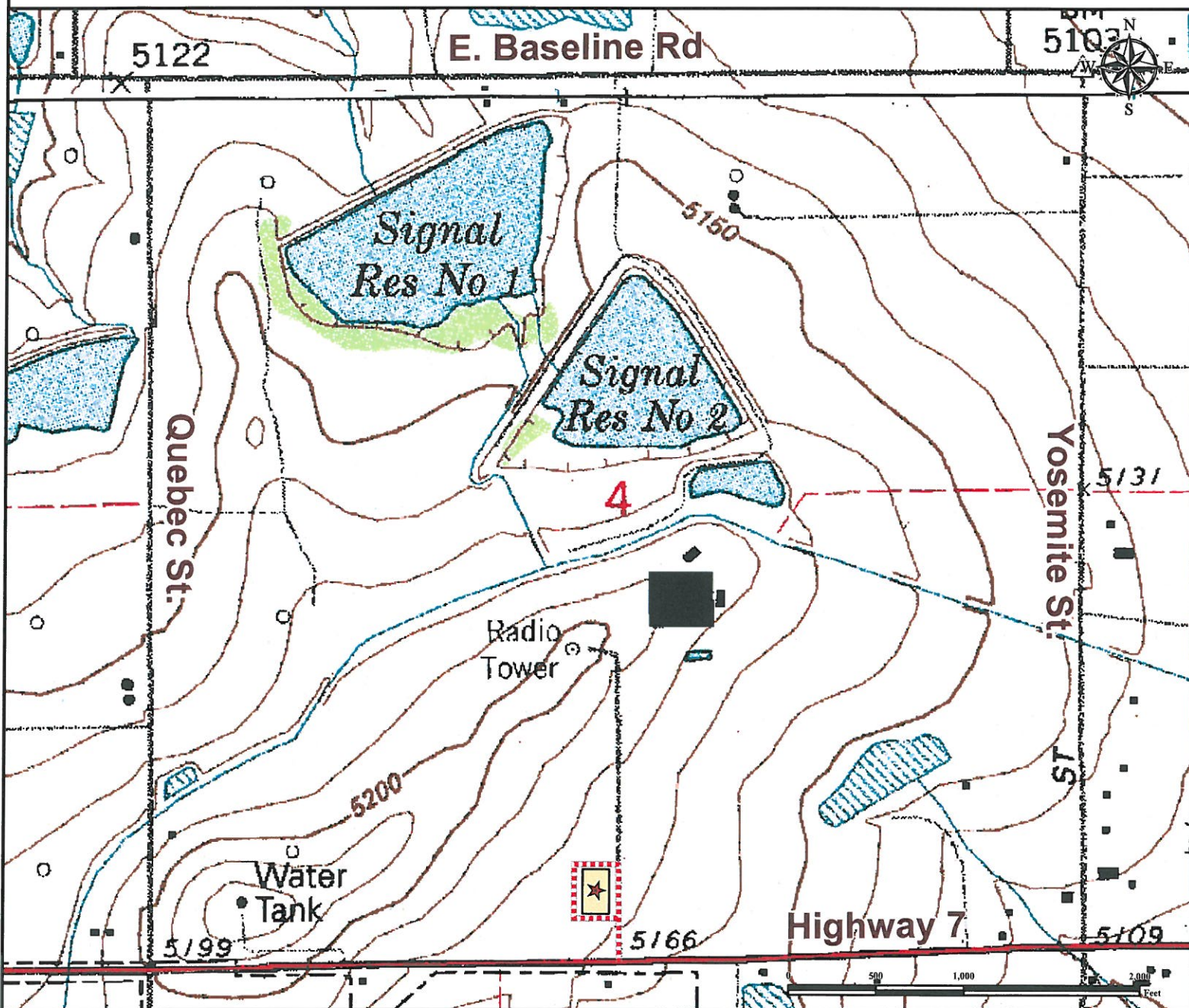


Access Road Map

ZARLENGO 14-4 FACILITY

SE¼ SW¼ SECTION 4, TOWNSHIP 1 SOUTH, RANGE 67 WEST OF THE 6TH PRINCIPAL MERIDIAN



From Brighton, CO: From the intersection of US Highway 85 and CO Highway 7, proceed west on CO HWY 7 ±3.7 miles to proposed access road. Turn Right onto proposed access road and proceed north ±0.1 miles to proposed facility location.


Total distance from Brighton, CO to proposed facility location is ±3.80 miles.

*** Size of Facility has been exaggerated to be clearly visible at this scale ***

Legend

 Proposed Facility  Proposed Access Road

Reference Location

**** All Measurements are Made from Reference Point  ****

Lat: 39.987482° Long:-104.894136° (NAD83)
Elevation: 5177 Feet



Use our resources to find yours!

www.petro-fs.com

(303) 928-7128

Field Date: 11/1/2011
Drafting Date: 11/16/2011
Drafter: DMM
Checked By: BHF

Data Sources:
- TOPO courtesy of USGS

Prepared for:

