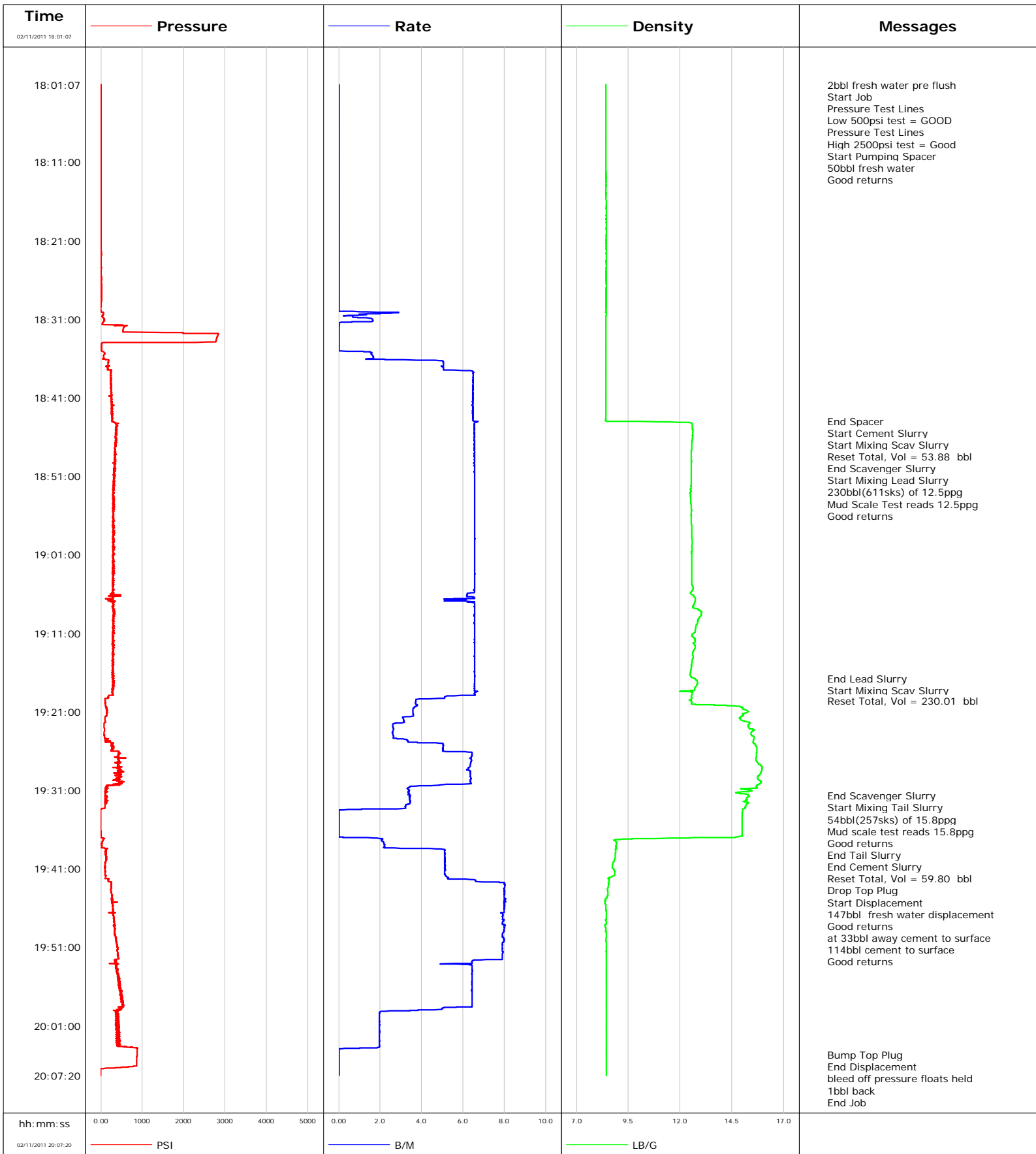


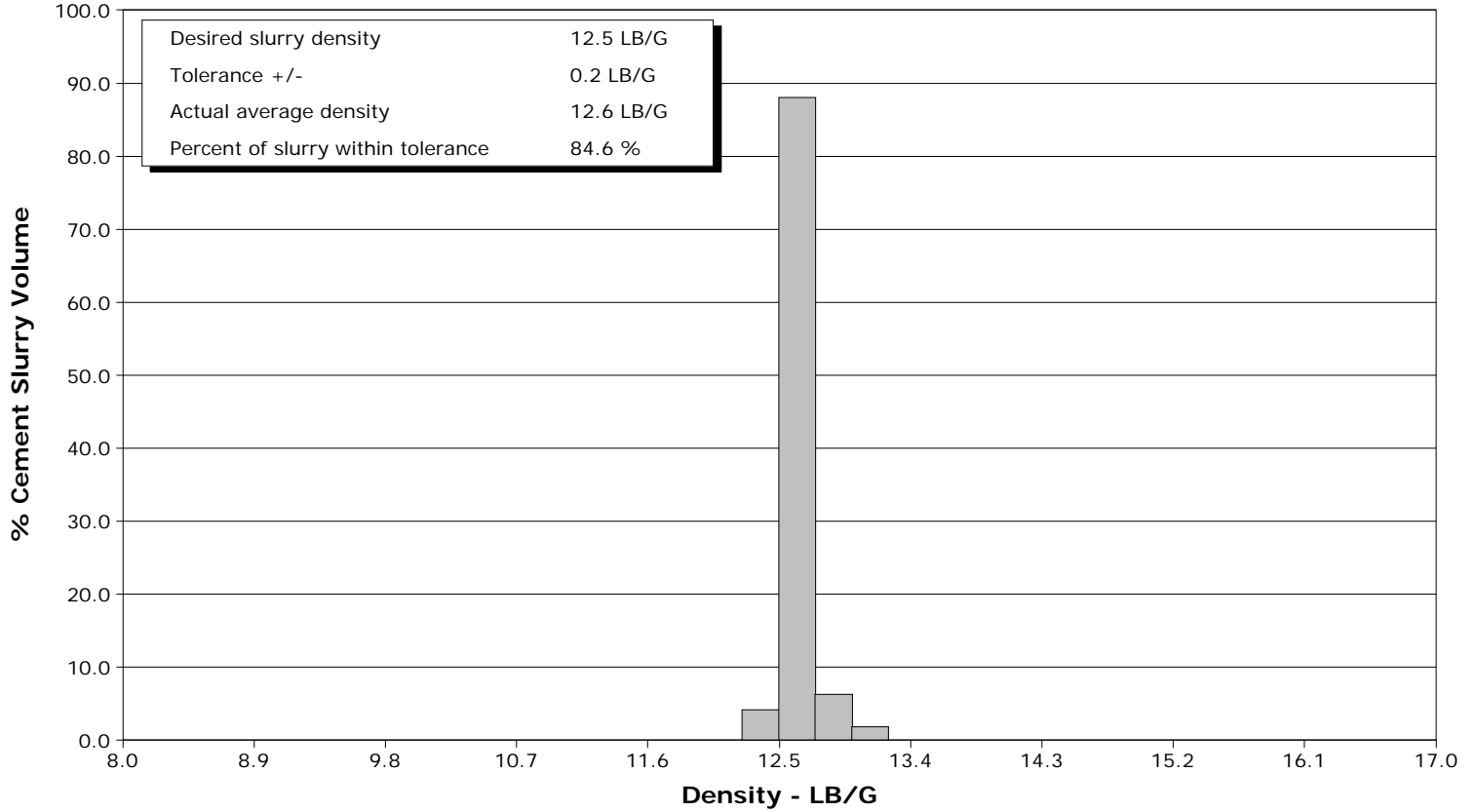
Well	FIVE R 15-1 HM C10	Client	ENCANA OIL GAS
Field	MAMM CREEK	SIR No.	000494586
Engineer	Dustin C Krueger	Job Type	1542' 10.75" Surface
Country	United States	Job Date	02-11-2011



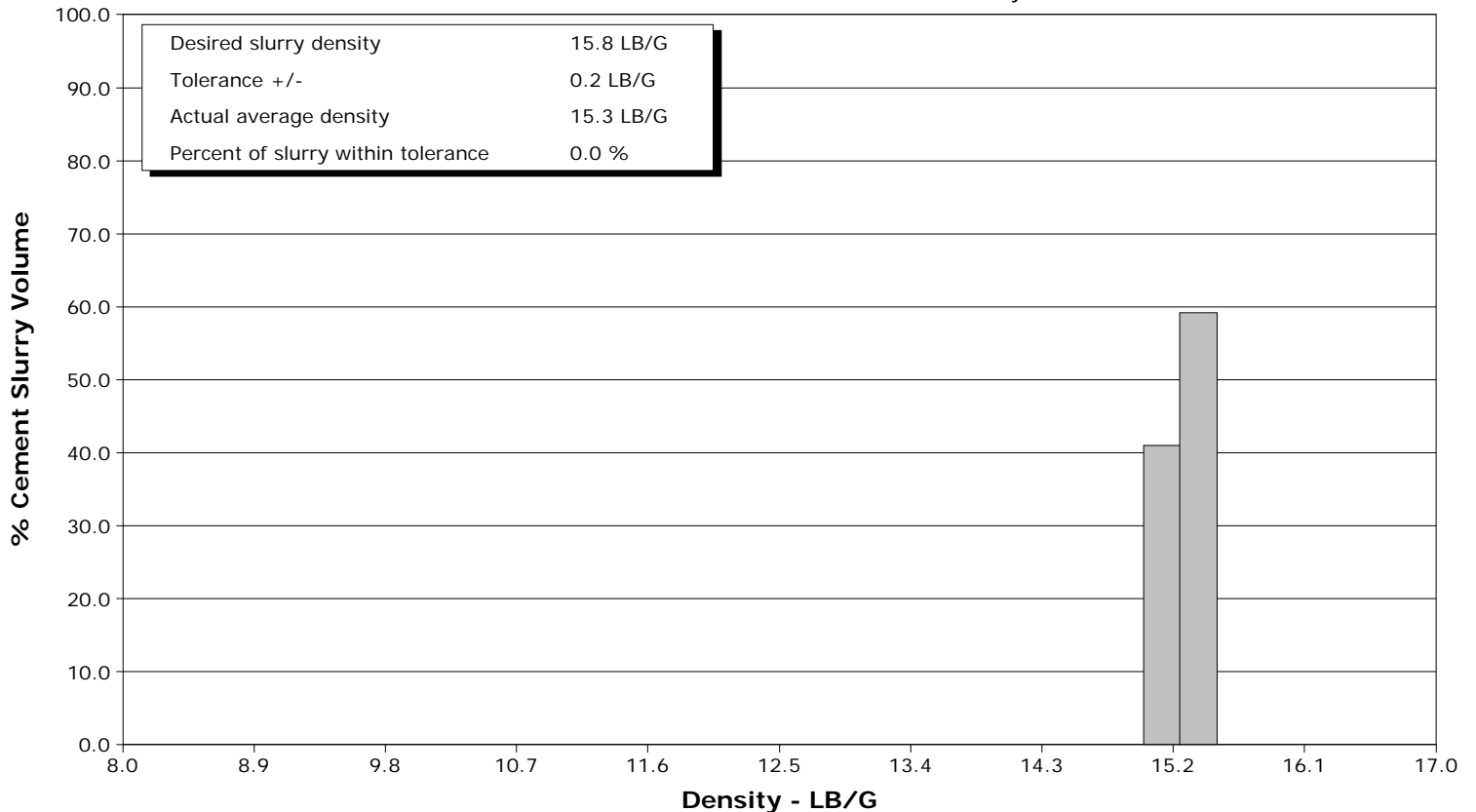
Well FIVE R 15-1 HM C10
Field MAMM CREEK
Engineer Dustin C Krueger
Country United States

Client ENCANA OIL GAS
SIR No. 000494586
Job Type 1542' 10.75" Surface
Job Date 02-11-2011

Lead Slurry - 02/11/2011 18:45:02 to 02/11/2011 19:16:50



Tail Slurry - 02/11/2011 19:31:46 to 02/11/2011 19:31:57



Customer ENCANA OIL & GAS	Job Number 000494586
-------------------------------------	--------------------------------

Well FIVE R 15-1 HM C10 FIVE R 15-1 HM C10	Location (legal) Orchard	Schlumberger Location GRAND-JUNCTION	Job Start Feb/11/2011
--	------------------------------------	--	---------------------------------

Field MAMM CREEK	Formation Name/Type Clean-Sandstone	Deviation	Bit Size 14.8 in	Well MD 1295.0 ft	Well TVD 1295.0 ft
----------------------------	---	------------------	----------------------------	-----------------------------	------------------------------

County GARFIELD	State/Province Colorado	BHP	BHST 95 degF	BHCT 83 degF	Pore Press. Gradient
---------------------------	-----------------------------------	------------	------------------------	------------------------	-----------------------------

Well Master 0631231667	API/UWI	Casing/Liner			
----------------------------------	----------------	---------------------	--	--	--

Rig Name NABORS M-11	Drilled For Gas	Service Via Land	Depth, ft	Size, in	Weight, lb/ft	Grade	Thread
--------------------------------	---------------------------	----------------------------	------------------	-----------------	----------------------	--------------	---------------

Offshore Zone	Well Class New	Well Type Development	40.0	20.000	0.0	N/A	N/A
----------------------	--------------------------	---------------------------------	------	--------	-----	-----	-----

Drilling Fluid Type Bentonite	Max. Density 9.30 lb/gal	Plastic Viscosity 12.000 cP	Tubing/Drill Pipe			
---	------------------------------------	---------------------------------------	--------------------------	--	--	--

Service Line Cementing	Job Type 1542' 10.75" Surface				
----------------------------------	---	--	--	--	--

Max. Allowed Tub. Press 3000 psi	Max. Allowed Ann. Press 1500 psi	WH Connection Single Cement head	Perforations/Open Hole			
--	--	--	-------------------------------	--	--	--

Top,	Bottom,		No. of Shots	Total Interval	
-------------	----------------	--	---------------------	-----------------------	--

Service Instructions Cement 10 3/4" surface casing @ 1545ft in 14 3/4" OH with 50 bbl water 230bbl(611sks) 12.5 ppq Lead 54bbl(257sks) 15.8 ppq Tail Displace 147bbl with water 114bbl Cement to surface					
--	--	--	--	--	--

Treat Down	Displacement 147.3 bbl	Packer Type	Packer Depth		
-------------------	----------------------------------	--------------------	---------------------	--	--

Tubing Vol.	Casing Vol. 151.6 bbl	Annular Vol. 159.0 bbl	Openhole Vol. 316.0 bbl		
--------------------	---------------------------------	----------------------------------	-----------------------------------	--	--

Casing/Tubing Secured <input checked="" type="checkbox"/>	1 Hole Vol. Circulated prior to Cement <input checked="" type="checkbox"/>	Casing Tools		Squeeze Job	
--	---	---------------------	--	--------------------	--

Lift Pressure 689 psi	Shoe Type Guide	Squeeze Type	
---------------------------------	---------------------------	---------------------	--

Pipe Rotated <input type="checkbox"/>	Pipe Reciprocated <input type="checkbox"/>	Shoe Depth 1545.0 ft	Tool Type		
--	---	--------------------------------	------------------	--	--

No. Centralizers 6	Top Plugs 1	Bottom Plugs	Stage Tool Type		Tool Depth
------------------------------	-----------------------	---------------------	------------------------	--	-------------------

Cement Head Type Single			Stage Tool Depth		Tail Pipe Size
-----------------------------------	--	--	-------------------------	--	-----------------------

Job Scheduled For Feb/11/2011 11:00	Arrived on Location Feb/11/2011 10:45	Leave Location Feb/11/2011 20:00	Collar Type Float		Tail Pipe Depth
---	---	--	-----------------------------	--	------------------------

			Collar Depth 1501.0 ft		Sqz. Total Vol.
--	--	--	----------------------------------	--	------------------------

Date	Time 24-hr clock	Treating Pressure PSI	Flow Rate B/M	Density LB/G	Volume BBL	Message
02/11/2011	17:59:27					Started Acquisition
02/11/2011	17:59:38					Pre Job Safety Meeting
02/11/2011	18:01:07	9	0.0	8.43	0.0	
02/11/2011	18:01:10					2bbl fresh water pre flush
02/11/2011	18:01:10	9	0.0	8.43	0.0	
02/11/2011	18:01:13					Start Job
02/11/2011	18:01:13	9	0.0	8.43	0.0	
02/11/2011	18:01:21					Pressure Test Lines
02/11/2011	18:01:21	9	0.0	8.43	0.0	
02/11/2011	18:01:24					Low 500psi test = GOOD
02/11/2011	18:01:24	9	0.0	8.43	0.0	
02/11/2011	18:01:26					Pressure Test Lines
02/11/2011	18:01:26	9	0.0	8.43	0.0	
02/11/2011	18:01:28					High 2500psi test = Good
02/11/2011	18:01:28	8	0.0	8.43	0.0	
02/11/2011	18:01:30					Start Pumping Spacer
02/11/2011	18:01:30	9	0.0	8.43	0.0	
02/11/2011	18:01:34					50bbl fresh water
02/11/2011	18:01:34					Good returns
02/11/2011	18:01:34	9	0.0	8.43	0.0	
02/11/2011	18:01:57	9	0.0	8.43	0.0	

Well		Field		Job Start		Customer		Job Number	
FIVE R 15-1 HM C10 FIVE R 15-1 HM C10		MAMM CREEK		Feb/11/2011		ENCANA OIL & GAS		000494586	
Date	Time 24-hr clock	Treating Pressure PSI	Flow Rate B/M	Density LB/G	Volume BBL	Message			
02/11/2011	18:06:57	9	0.0	8.43	0.0				
02/11/2011	18:09:27	10	0.0	8.43	0.0				
02/11/2011	18:11:57	10	0.0	8.43	0.0				
02/11/2011	18:14:27	11	0.0	8.43	0.0				
02/11/2011	18:16:57	11	0.0	8.43	0.0				
02/11/2011	18:19:27	11	0.0	8.43	0.0				
02/11/2011	18:21:57	12	0.0	8.43	0.0				
02/11/2011	18:24:27	11	0.0	8.43	0.0				
02/11/2011	18:26:57	12	0.0	8.43	0.0				
02/11/2011	18:29:27	11	0.0	8.43	0.0				
02/11/2011	18:31:57	572	0.0	8.42	1.9				
02/11/2011	18:34:27	16	0.0	8.42	1.9				
02/11/2011	18:36:57	173	5.0	8.41	7.4				
02/11/2011	18:39:27	255	6.5	8.41	22.8				
02/11/2011	18:41:57	320	6.4	8.41	39.0				
02/11/2011	18:43:58					End Spacer			
02/11/2011	18:43:58	264	6.5	8.40	52.0				
02/11/2011	18:44:02					Start Cement Slurry			
02/11/2011	18:44:02	279	6.7	9.08	52.4				
02/11/2011	18:44:03					Start Mixing Scav Slurry			
02/11/2011	18:44:03	274	6.7	10.12	52.6				
02/11/2011	18:44:15					Reset Total, Vol = 53.88 bbl			
02/11/2011	18:44:15	356	6.5	12.55	53.9				
02/11/2011	18:44:27	372	6.5	12.58	55.2				
02/11/2011	18:45:01					End Scavenger Slurry			
02/11/2011	18:45:01	358	6.5	12.59	58.9				
02/11/2011	18:45:02					Start Mixing Lead Slurry			
02/11/2011	18:45:02	385	6.5	12.60	59.0				
02/11/2011	18:45:05					230bbl(611sks) of 12.5ppg			
02/11/2011	18:45:05					Mud Scale Test reads 12.5ppg			
02/11/2011	18:45:05	384	6.5	12.61	59.3				
02/11/2011	18:45:06					Good returns			
02/11/2011	18:45:06	350	6.5	12.61	59.4				
02/11/2011	18:46:57	340	6.5	12.55	71.5				
02/11/2011	18:49:27	360	6.6	12.55	87.9				
02/11/2011	18:51:57	326	6.6	12.53	104.3				
02/11/2011	18:54:27	303	6.6	12.52	120.7				
02/11/2011	18:56:57	307	6.6	12.54	137.1				
02/11/2011	18:59:27	306	6.6	12.58	153.5				
02/11/2011	19:01:57	314	6.6	12.56	169.9				
02/11/2011	19:04:27	286	6.6	12.57	186.3				
02/11/2011	19:06:57	351	6.1	12.72	202.1				
02/11/2011	19:09:27	318	6.6	12.86	218.5				
02/11/2011	19:11:57	325	6.6	12.71	234.9				
02/11/2011	19:14:27	293	6.5	12.59	251.2				
02/11/2011	19:16:50					End Lead Slurry			
02/11/2011	19:16:50	306	6.6	12.72	266.9				
02/11/2011	19:16:51					Start Mixing Scav Slurry			
02/11/2011	19:16:51	306	6.6	12.74	267.0				
02/11/2011	19:16:57	285	6.6	12.74	267.6				
02/11/2011	19:19:27	106	3.7	12.54	283.2				
02/11/2011	19:19:38					Reset Total, Vol = 230.01 bbl			
02/11/2011	19:19:38	107	3.7	12.52	283.9				
02/11/2011	19:21:57	101	3.1	14.91	292.2				

Well		Field		Job Start		Customer		Job Number	
FIVE R 15-1 HM C10 FIVE R 15-1 HM C10		MAMM CREEK		Feb/11/2011		ENCANA OIL & GAS		000494586	
Date	Time 24-hr clock	Treating Pressure PSI	Flow Rate B/M	Density LB/G	Volume BBL	Message			
02/11/2011	19:26:57	429	6.3	15.66	311.8				
02/11/2011	19:29:27	422	6.4	15.74	327.7				
02/11/2011	19:31:44					End Scavenger Slurry			
02/11/2011	19:31:44	104	3.5	15.33	338.2				
02/11/2011	19:31:46					Start Mixing Tail Slurry			
02/11/2011	19:31:46	145	3.5	15.34	338.3				
02/11/2011	19:31:50					54bbl(257sks) of 15.8ppg			
02/11/2011	19:31:50					Mud scale test reads 15.8ppg			
02/11/2011	19:31:50	113	3.4	15.29	338.5				
02/11/2011	19:31:51					Good returns			
02/11/2011	19:31:51	102	3.4	15.29	338.6				
02/11/2011	19:31:57					End Tail Slurry			
02/11/2011	19:31:57	112	3.4	15.23	338.9				
02/11/2011	19:32:01					End Cement Slurry			
02/11/2011	19:32:01	107	3.4	15.22	339.1				
02/11/2011	19:33:23					Reset Total, Vol = 59.80 bbl			
02/11/2011	19:33:23	27	2.9	15.06	343.7				
02/11/2011	19:33:28					Drop Top Plug			
02/11/2011	19:33:28					Start Displacement			
02/11/2011	19:33:28	-16	0.5	15.01	343.8				
02/11/2011	19:33:31					147bbl fresh water displacement			
02/11/2011	19:33:31					Good returns			
02/11/2011	19:33:31	-8	0.1	15.01	343.9				
02/11/2011	19:34:27	-9	0.0	14.98	343.9				
02/11/2011	19:36:57	-8	0.0	14.77	343.9				
02/11/2011	19:39:27	130	5.1	8.87	352.0				
02/11/2011	19:41:57	118	5.2	8.80	364.8				
02/11/2011	19:44:27	271	8.0	8.50	383.2				
02/11/2011	19:46:57	296	7.9	8.44	403.1				
02/11/2011	19:49:02					at 33bbl away cement to surface			
02/11/2011	19:49:02					114bbl cement to surface			
02/11/2011	19:49:02	330	8.0	8.41	419.7				
02/11/2011	19:49:27	337	7.9	8.43	423.0				
02/11/2011	19:51:44					Good returns			
02/11/2011	19:51:44	405	7.9	8.43	441.1				
02/11/2011	19:51:57	409	7.9	8.43	442.8				
02/11/2011	19:54:27	399	6.4	8.43	459.7				
02/11/2011	19:56:57	467	6.4	8.44	475.8				
02/11/2011	19:59:27	409	2.0	8.44	489.6				
02/11/2011	20:01:57	390	2.0	8.44	494.5				
02/11/2011	20:04:27	874	0.0	8.44	498.3				
02/11/2011	20:04:44					Bump Top Plug			
02/11/2011	20:04:44	871	0.0	8.44	498.3				
02/11/2011	20:04:45					End Displacement			
02/11/2011	20:04:45	871	0.0	8.44	498.3				
02/11/2011	20:04:52					bleed off pressure floats held			
02/11/2011	20:04:52	870	0.0	8.44	498.3				
02/11/2011	20:04:53					1bbl back			
02/11/2011	20:04:53	870	0.0	8.44	498.3				
02/11/2011	20:06:57	-8	0.0	8.44	498.3				
02/11/2011	20:07:16					End Job			
02/11/2011	20:07:16	-8	0.0	8.44	498.3				

Well FIVE R 15-1 HM C10 FIVE R 15-1 HM C10	Field MAMM CREEK	Job Start Feb/11/2011	Customer ENCANA OIL & GAS	Job Number 000494586
--	----------------------------	---------------------------------	-------------------------------------	--------------------------------

Post Job Summary

Average Pump Rates,					Volume of Fluid Injected, bbl			
Slurry	N2	Mud	Maximum Rate		Total Slurry 283.0	Mud	Spacer 50.0	N2
Treating Pressure Summary, psi					Breakdown Fluid			
Maximum 3000	Final 700	Average 250	Bump Plug to 1000	Breakdown 251	Type FreshWater	Volume 503.0 bbl	Density 8.34 lb/gal	
Avg. N2 Percent	Designed Slurry Volume 283.0 bbl		Displacement 147.3 bbl	Mix Water Temp 75 degF	Cement Circulated to Surface? <input checked="" type="checkbox"/>	Volume 114.0 bbl		
Customer or Authorized Representative Richard Mitchell					Schlumberger Supervisor Dustin C Krueger		Washed Thru Perfs <input type="checkbox"/>	To
							Circulation Lost <input type="checkbox"/>	Job Completed <input checked="" type="checkbox"/>
							-	-