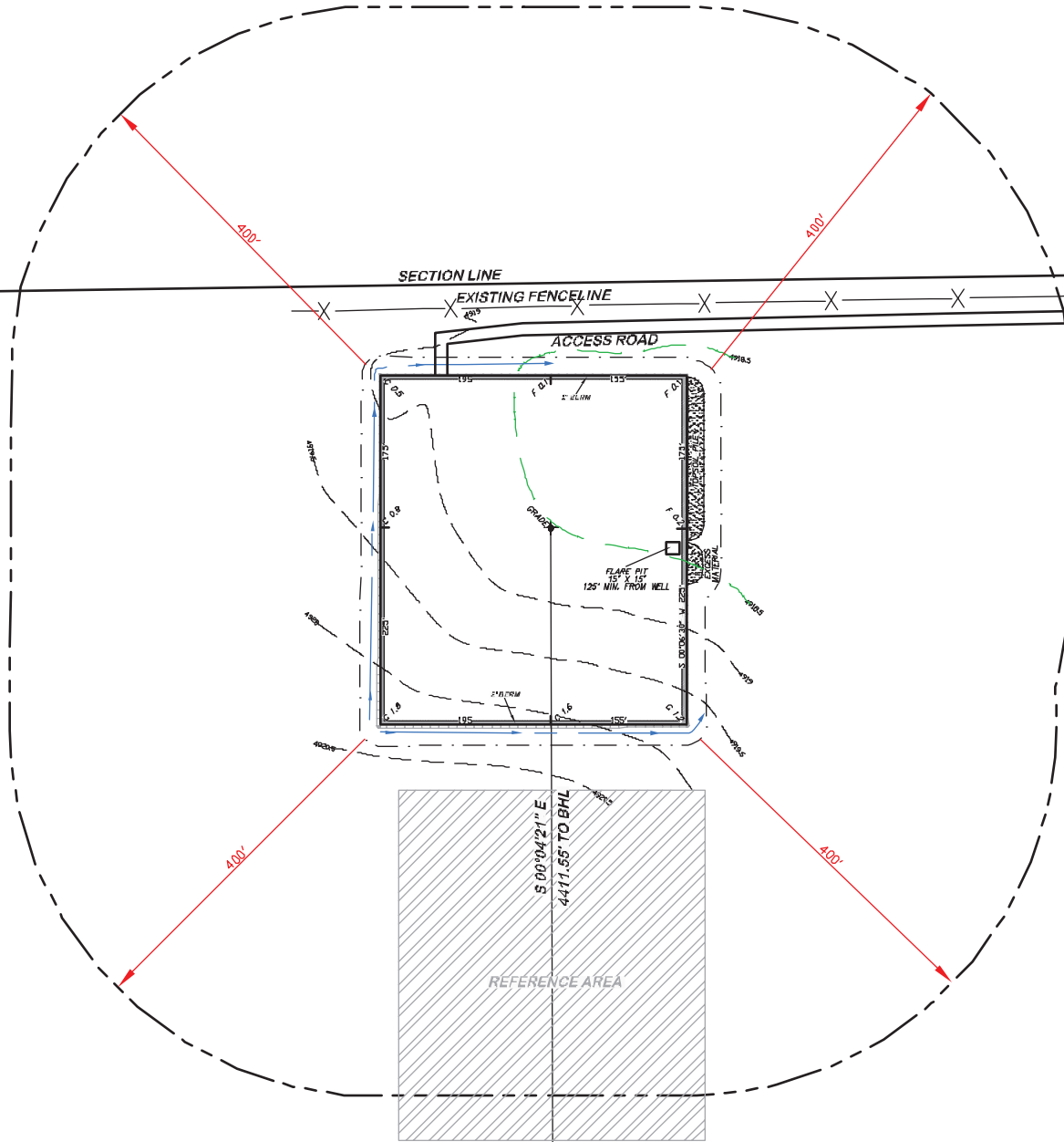


APPROXIMATE DISTURBANCE AREA: 4.1 ACRES±
 0.6% GRADE ON A NORTHEASTERLY SLOPE
 UNGRADED ELEVATION: 4918.5'
 FINISHED ELEVATION: 4918.5'

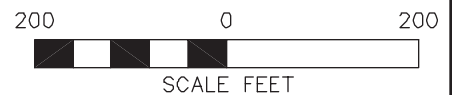
2A ATTACHMENT

2



**BEFORE DIGGING
 CALL FOR
 UTILITY LINE LOCATION**

NOTE: THE EARTH QUANTITIES ON
 THIS DRAWING ARE ESTIMATED
 AND THE USE OF IS AT THE
 RESPONSIBILITY OF THE USER.



RIFFIN & ASSOCIATES, INC.
 1414 ELK ST., ROCK SPRINGS, WY 82901

(307) 362-6028

DRAWN: 11/22/11 - JMB

SCALE: 1" = 200'

REVISED: NA

DRG JOB No. 18945

EXHIBIT 2C

LOCATION DRAWING

CHESAPEAKE ENERGY, LLC.
STATE 8-60 16-2H
SECTION 16, T8N, R60W

UNGRADED ELEVATION: 4918.5'
FINISHED ELEVATION: 4918.5'