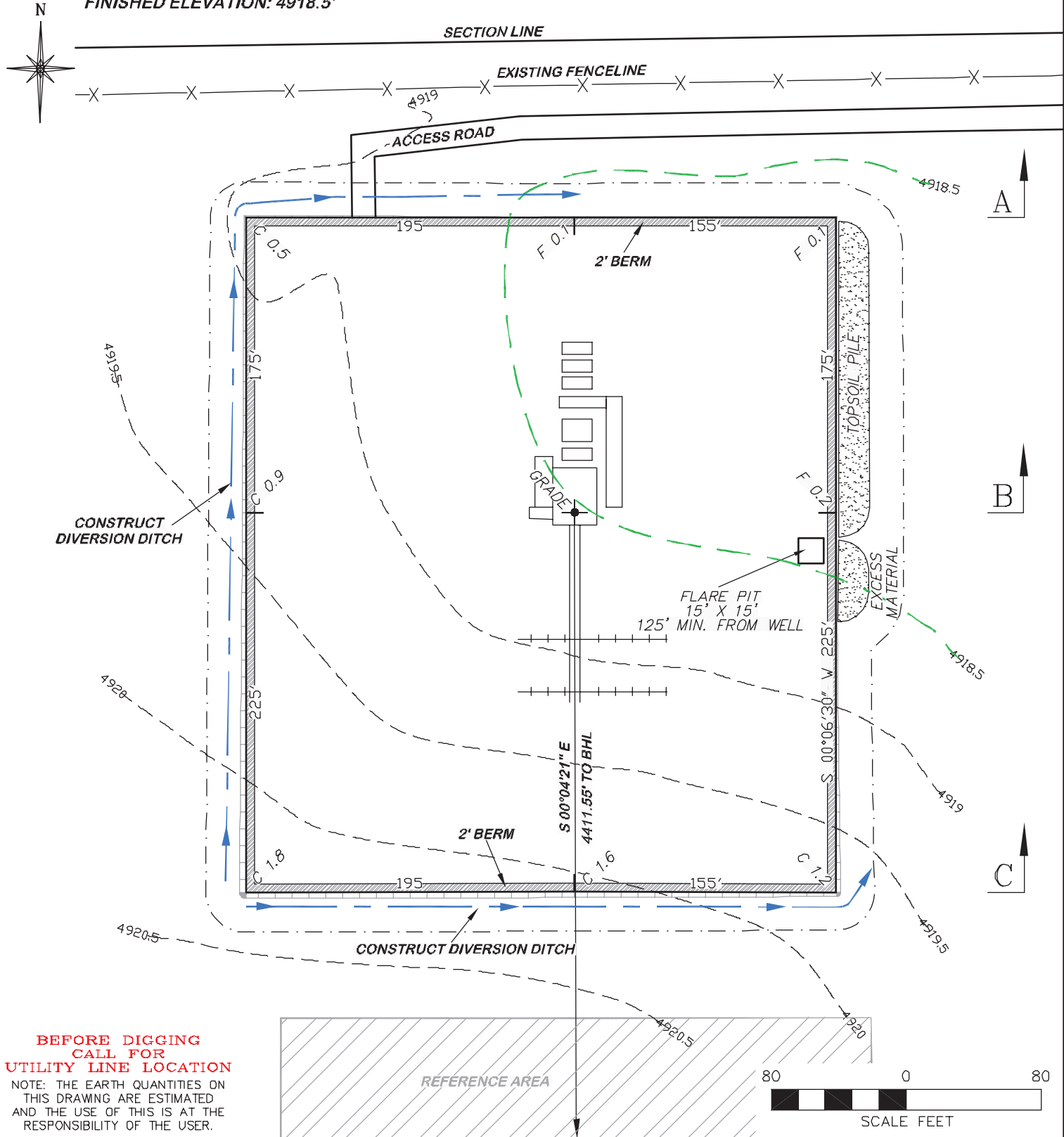


APPROXIMATE DISTURBANCE AREA: 4.1 ACRES±  
 0.6% GRADE ON A NORTHEASTERLY SLOPE  
 UNGRADED ELEVATION: 4918.5'  
 FINISHED ELEVATION: 4918.5'



**BEFORE DIGGING  
 CALL FOR  
 UTILITY LINE LOCATION**  
 NOTE: THE EARTH QUANTITIES ON  
 THIS DRAWING ARE ESTIMATED  
 AND THE USE OF THIS IS AT THE  
 RESPONSIBILITY OF THE USER.

**DRG** RIFFIN & ASSOCIATES, INC.  
 1414 ELK ST., ROCK SPRINGS, WY 82901  
 (307) 362-6028

**CONSTRUCTION LAYOUT DRAWING 1 OF 3**  
**CHESAPEAKE ENERGY, LLC.**  
**STATE 8-60 16-2H**  
**SECTION 16, T8N, R60W**

DRAWN: 11/22/11 - JMB	SCALE: 1" = 80'
REVISED: NA	DRG JOB No. 18945
	EXHIBIT 2

ESTIMATED EARTHWORK				
ITEM	CUT	FILL	TOPSOIL	EXCESS
PAD	3072 CY	95 CY	2593 CY	384 CY
PIT	0 CY			0 CY
TOTALS	3072 CY	95 CY	2593 CY	384 CY