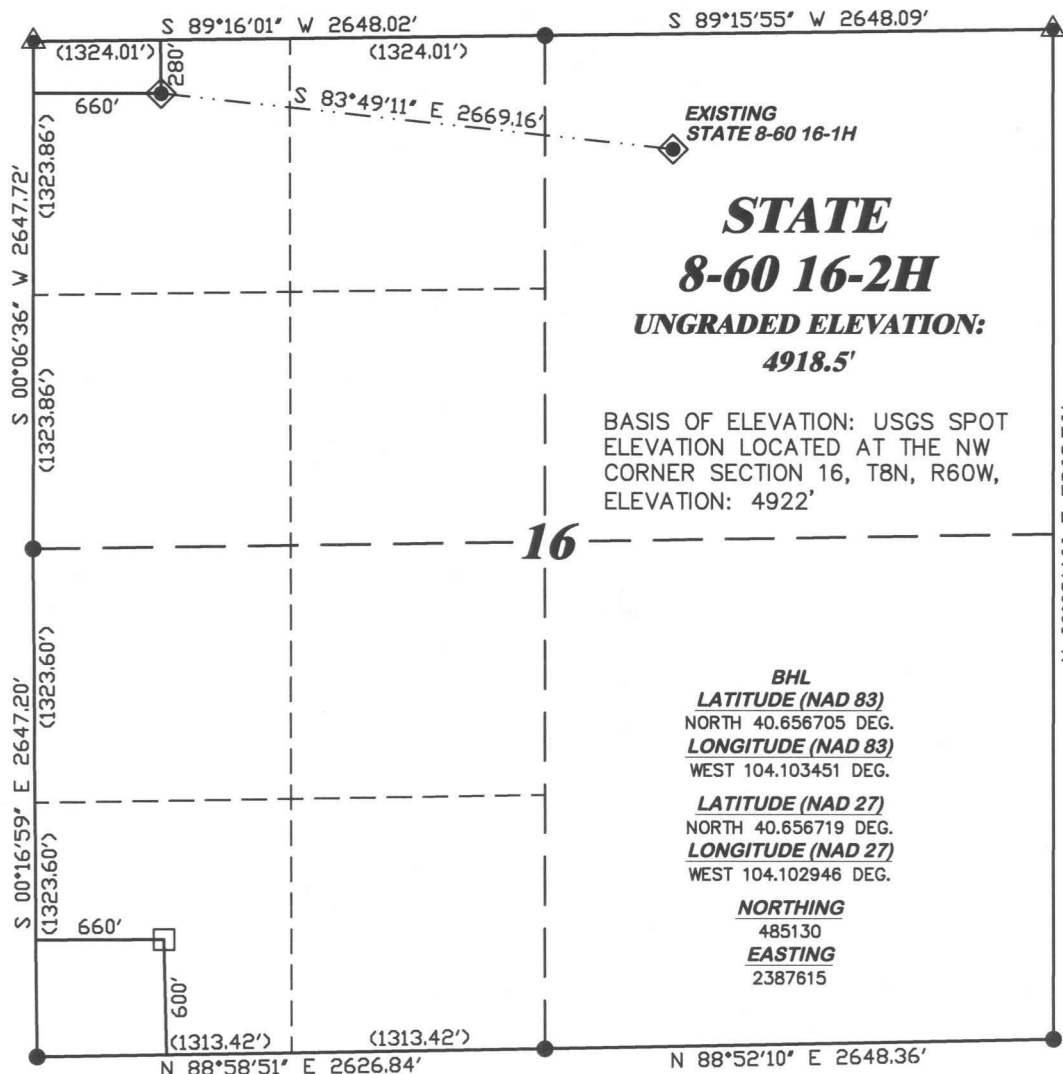


R. 60 W.



**STATE
8-60 16-2H**
**UNGRADED ELEVATION:
4918.5'**

BASIS OF ELEVATION: USGS SPOT
ELEVATION LOCATED AT THE NW
CORNER SECTION 16, T8N, R60W,
ELEVATION: 4922'

BHL
LATITUDE (NAD 83)
NORTH 40.656705 DEG.
LONGITUDE (NAD 83)
WEST 104.103451 DEG.
LATITUDE (NAD 27)
NORTH 40.656719 DEG.
LONGITUDE (NAD 27)
WEST 104.102946 DEG.

NORTHING
485130
EASTING
2387615

SCALE 1" = 1000'

T. 8 N.

LATITUDE (NAD 83)
NORTH 40.668813 DEG.
LONGITUDE (NAD 83)
WEST 104.103220 DEG.

LATITUDE (NAD 27)
NORTH 40.668827 DEG.
LONGITUDE (NAD 27)
WEST 104.102716 DEG.

NORTHING
489541.68
EASTING
2387609.23

BASIS OF BEARING/DATUM
SPCS CO NORTH NAD 27
BASED ON NGS TRIANGULATION
STATION "SNOW"

NOTES

PRARIE LANDS
EXISTING FENCELINE WITHIN
400' RADIUS OF WELL SITE.

GPS OPERATOR PAUL ORME
OBSERVED A PDOP OF 2.2.
ALL GPS OBSERVATIONS ARE IN
COMPLIANCE WITH COGCC RULE No.215.



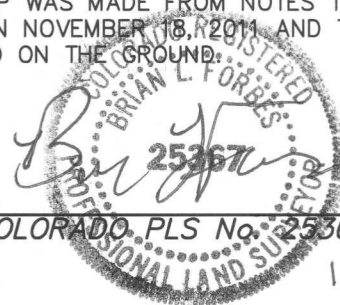
SURVEYOR'S STATEMENT

I, BRIAN L. FORBES, OF ROCK SPRINGS, WYOMING, HEREBY STATE: THIS MAP WAS MADE FROM NOTES TAKEN DURING AN ACTUAL FIELD SURVEY DONE UNDER MY DIRECT SUPERVISION ON NOVEMBER 18, 2011 AND THAT THIS PLAT CORRECTLY SHOWS THE LOCATION OF STATE 8-60 16-2H AS STAKED ON THE GROUND.

LEGEND

- ◆ WELL LOCATION
- BOTTOM HOLE LOC. (APPROX)
- FOUND MONUMENT
- ▲ PREVIOUSLY FOUND MONUMENT

COLORADO PLS No. 25367



11/23/11



DRIFIN & ASSOCIATES, INC.
1414 ELK ST., ROCK SPRINGS, WY 82901

(307) 362-5028

DRAWN: 11/22/11 - JMB

SCALE: 1" = 1000'

REVISED: NA

DRG JOB No. 18945

EXHIBIT 1

**PLAT OF DRILLING LOCATION
FOR
CHESAPEAKE ENERGY LLC.**

**280' F/NL & 660' F/WL, NWNW, SECTION 16,
T. 8 N., R. 60 W., 6th P.M.
WELD COUNTY, COLORADO**