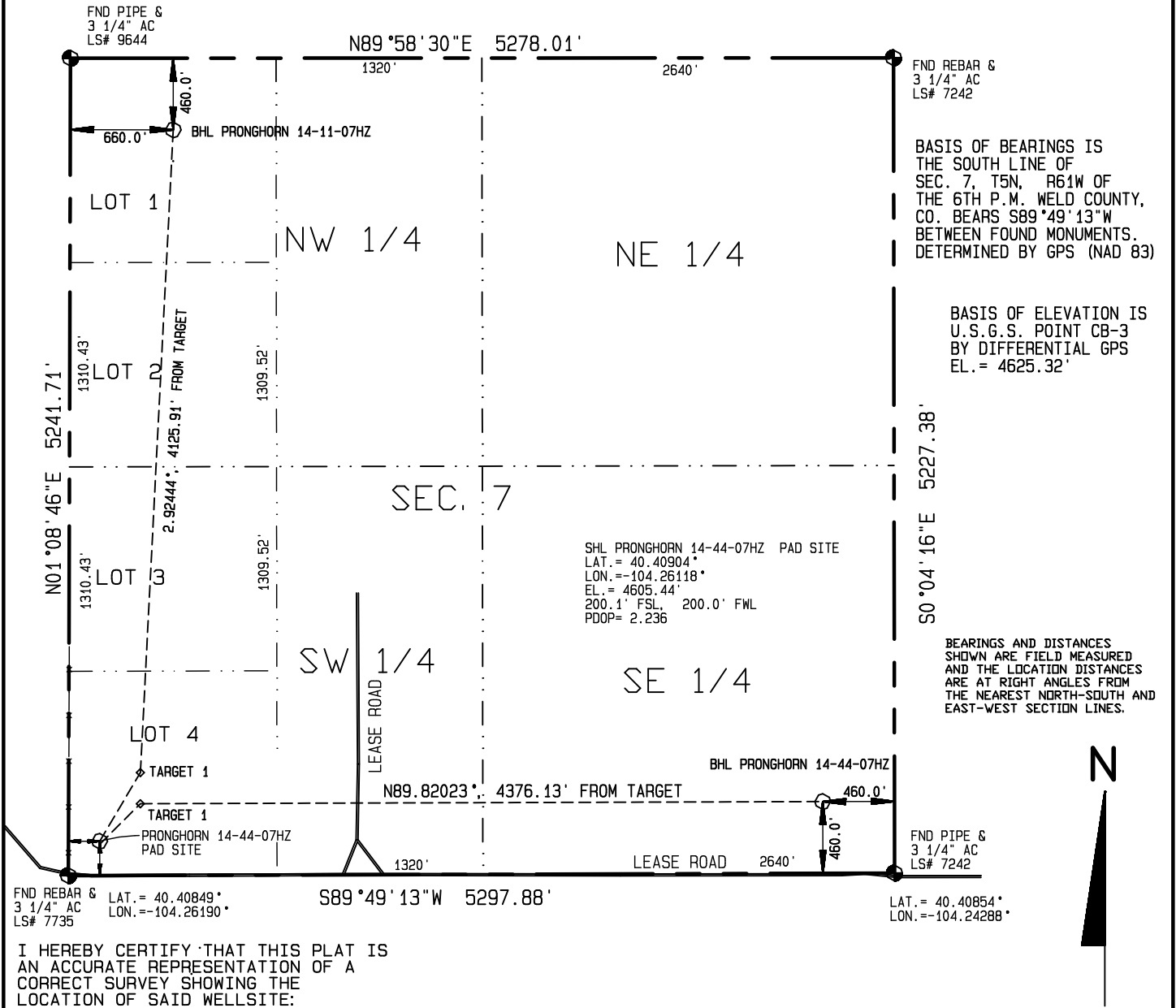


SURFACE HOLE LOCATION PRONGHORN 14-44-07 HZ PAD SITE
 WELL LAT. LONG. EL. FSL FWL
 14-11-07HZ 40.40910° -104.26118° 4605.28' 219.9' 200.0'
 14-44-07HZ 40.40904° -104.26118° 4605.44' 200.1' 200.0'

BOTTOM HOLE LOCATION PRONGHORN 14-44-07 HZ PAD SITE
 WELL LAT. LONG. N-S E-W
 14-11-07HZ 40.42160° -104.25925° 460.0'FNL 660.0'FWL
 14-44-07HZ 40.40962° -104.24451° 460.0'FSL 460.0'FEL

Visible improvements within 400 feet of the location include:
 A field road passes 215' to the south, a fence is 224' west.



BASIS OF BEARINGS IS THE SOUTH LINE OF SEC. 7, T5N, R61W OF THE 6TH P.M. WELD COUNTY, CO. BEARS S89°49'13"W BETWEEN FOUND MONUMENTS. DETERMINED BY GPS (NAD 83)

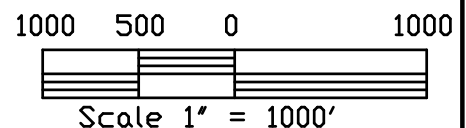
BASIS OF ELEVATION IS U.S.G.S. POINT CB-3 BY DIFFERENTIAL GPS EL. = 4625.32'

BEARINGS AND DISTANCES SHOWN ARE FIELD MEASURED AND THE LOCATION DISTANCES ARE AT RIGHT ANGLES FROM THE NEAREST NORTH-SOUTH AND EAST-WEST SECTION LINES.

FND REBAR & 3 1/4" AC LS# 7735 LAT. = 40.40849° LON. = -104.26190°

FND PIPE & 3 1/4" AC LS# 7242 LAT. = 40.40854° LON. = -104.24288°

I HEREBY CERTIFY THAT THIS PLAT IS AN ACCURATE REPRESENTATION OF A CORRECT SURVEY SHOWING THE LOCATION OF SAID WELLSITE:



Dan Griggs PLS# 38018

CONTRACT SURVEYORS, LTD.
 COMPLETE SURVEYING AND GLOBAL POSITIONING

2133 SOUTH BELLAIRE STREET #14
 DENVER COLORADO 80222
 (303) 756-3695

DATE OF FIELD WORK: OCTOBER 25, 2011	DATE OF DRAWING: NOVEMBER 11, 2011
PRONGHORN 14-44-07HZ PAD SITE	
LOT 4, SEC. 7, T5N, R61W	
BONANZA CREEK ENERGY OPERATING COMPANY, LLC	
WELD COUNTY, COLORADO	