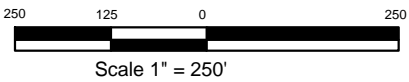


- A fenceline passes 200' west of location stake
- A lease road passes 205. South of location stake



BONANZA CREEK ENERGY OPERATING COMPANY, LLC



Drawing Title:

Location Drawing

Drawing Date: 11/08/2011

Well/Location Name:

Pronghorn 14-44-7HZ

Surface Location:

Lot 4 Sec 07, T5N, R61W, 6th PM, Weld County, CO
 Lat. 40.40904 Long. -104.26118
 200' FSL 200' FWL

Drawn By: ksc