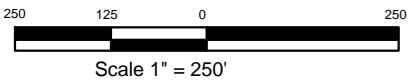


- - - - An electric fence passes 91' East of location stake
- - - - A buried gas gathering line passes 193' North of location stake
- - - - A lease road passes 206' North of location stake



## BONANZA CREEK ENERGY OPERATING COMPANY, LLC



Drawing Title:

Location Drawing

Drawing Date: 10/28/2011

Well/Location Name:

Pronghorn 31-44-6HZ

Surface Location:

Lot 2 Sec 06, T5N, R61W, 6th PM, Weld County, CO  
 Lat. 40.43682 Long. -104.25041  
 225' FNL 2062' FEL

Drawn By: ksc