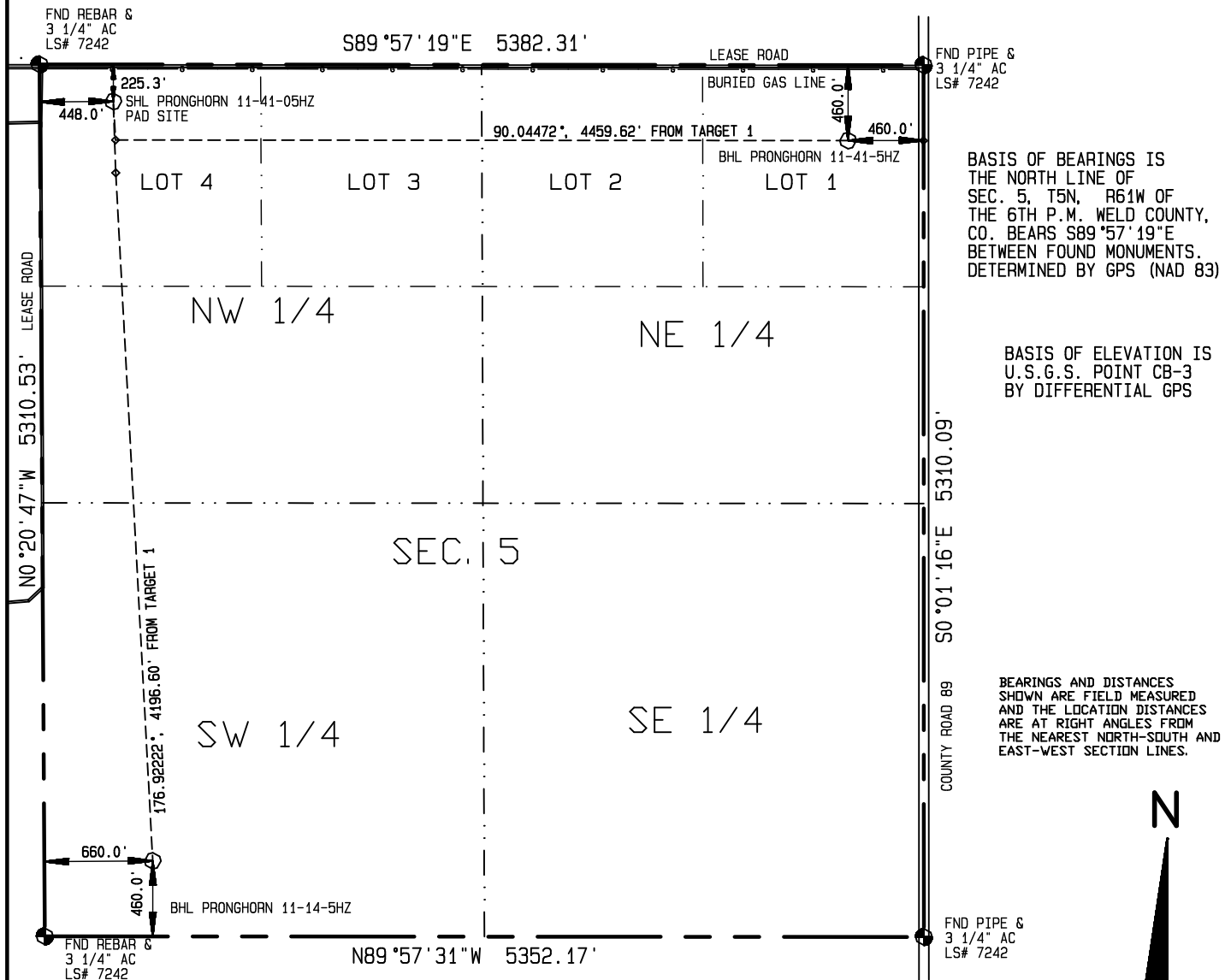
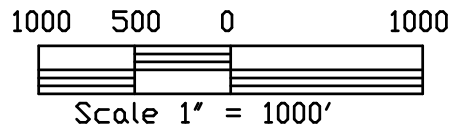


SURFACE HOLE LOCATION PRONGHORN 11-41-05 HZ PAD SITE						BOTTOM HOLE LOCATION PRONGHORN 11-44-05 HZ PAD SITE					
WELL	LAT.	LONG.	EL.	FNL	FWL	WELL	LAT.	LONG.	N-S	E-W	
11-41-05HZ	40.43683°	-104.24139°	4598.65'	225.3'	448.0'	11-41-05 HZ	40.43600°	-104.22534°	460.0'FNL	460.0'FEL	
11-14-05HZ	40.43678°	-104.24139°	4598.65'	245.3'	447.8'	11-14-05 HZ	40.42413°	-104.24077°	460.0'FSL	660.0'FWL	

Visible improvements within 400 feet of the location include:
 A lease road is 208' north, a buried gas line is 198' north



I HEREBY CERTIFY THAT THIS PLAT IS
 AN ACCURATE REPRESENTATION OF A
 CORRECT SURVEY SHOWING THE
 LOCATION OF SAID WELLSITE:



Dan Griggs PLS# 38018

CONTRACT SURVEYORS, LTD.
 COMPLETE SURVEYING AND GLOBAL POSITIONING

2133 SOUTH BELLAIRE STREET #14
 DENVER COLORADO 80222
 (303) 756-3695



DATE OF FIELD WORK:

OCTOBER 25, 2011

DATE OF DRAWING:

OCTOBER 31, 2011

PRONGHORN 11-41-05HZ (PAD SITE)

LOT 4, SEC. 5, T5N, R61W

BONANZA CREEK ENERGY OPERATING COMPANY, LLC

PAGE 1

CSL# 10104-53
 REVISION 2

WELD COUNTY, COLORADO