

# **US ROCKIES REGION PLANNING**

**COLORADO NORTHERN ZONE - 83**

**WELD\_RATTLER PAD 2**

**RATTLER 26N-33HZ**


**RATTLER 26N-33HZ**

**Plan: RATTLER 26N-33HZ (wp01)**

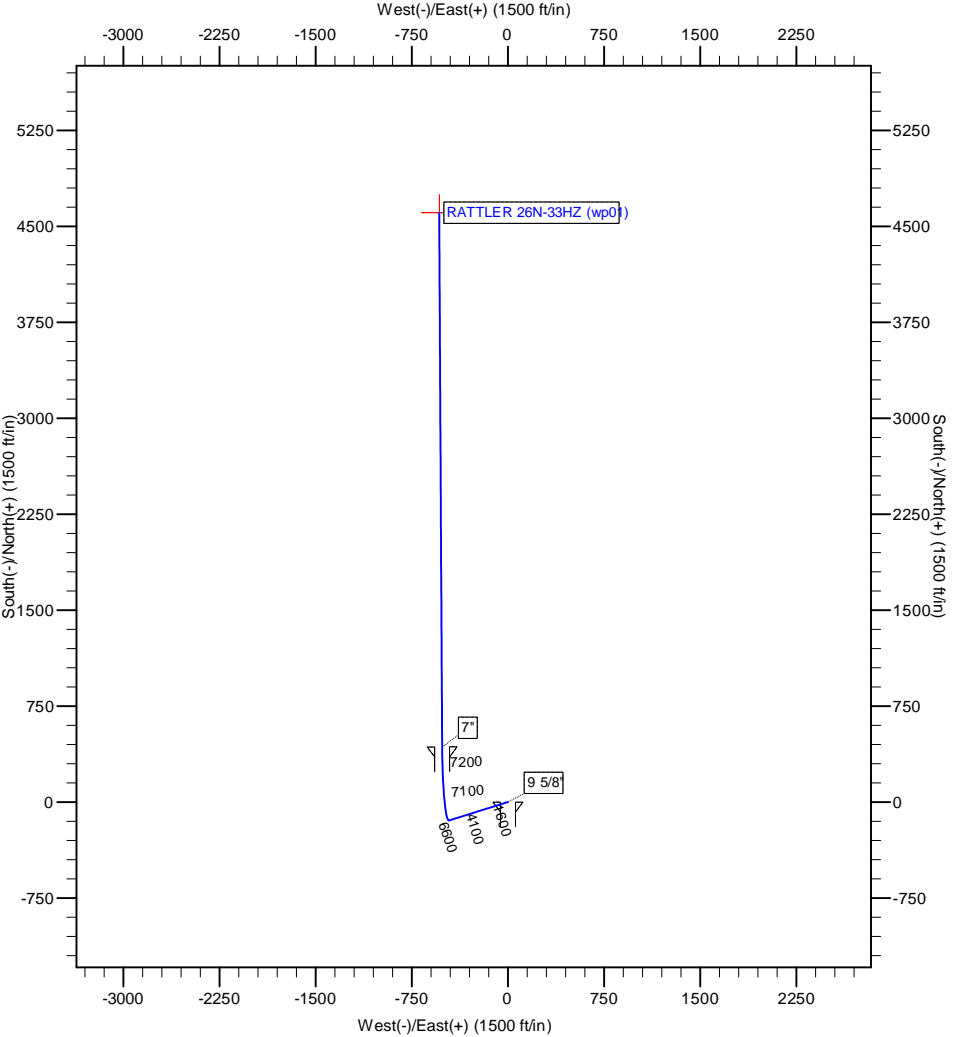
## **Standard Planning Report**

**24 October, 2011**

Azimuths to True North  
 Magnetic North: 8.80°  
 Magnetic Field  
 Strength: 52973.3snT  
 Dip Angle: 66.86°  
 Date: 10/24/2011  
 Model: IGRF2010




**Project:** COLORADO NORTHERN ZONE - 83  
**Site:** WELD\_RATTLER PAD 2  
**Well:** RATTLER 26N-33HZ  
**Wellbore:** RATTLER 26N-33HZ  
**Section:**  
**SHL:**  
**Design:** RATTLER 26N-33HZ (wp01)  
**Latitude:** 40.174881  
**Longitude:** -104.771075  
**GL:** 4967.00  
**KB:** 17' RKB + 4967' GL @ 4984.00ft



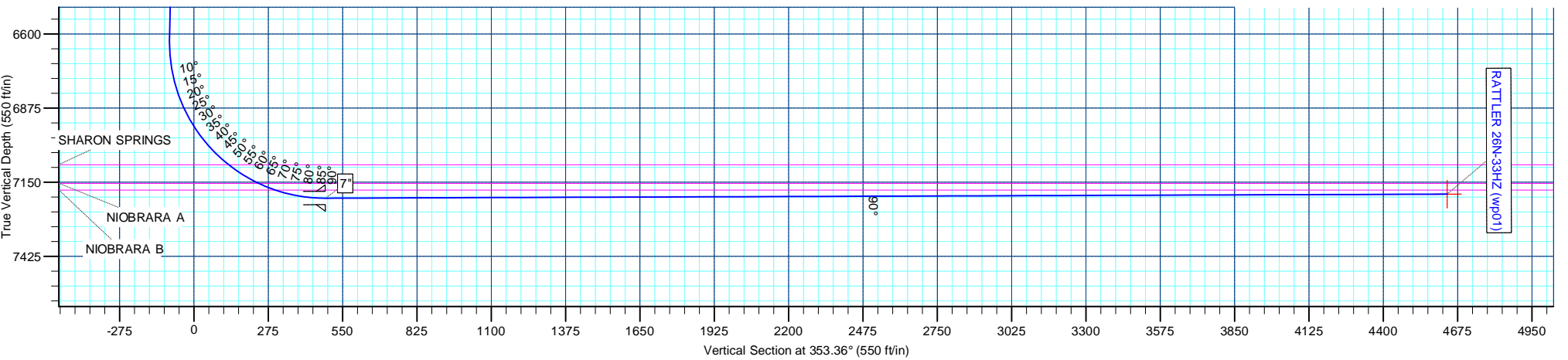
WELL DETAILS: RATTLER 26N-33HZ						
+N-S	+E-W	Northing	Ground Level: Easting	4967.00	Latitude	Longitude
0.00	0.00	1307389.22	3203684.99	40.174881	-104.771075	Slot

SECTION DETAILS									
MD	Inc	Azi	TVD	+N-S	+E-W	Dleg	TFace	VSect	
0.00	0.00	0.00	0.00	0.00	0.00	0.00	0.00	0.00	
1050.00	0.00	0.00	1050.00	0.00	0.00	0.00	0.00	0.00	
1302.57	5.05	252.55	1302.25	-3.34	-10.61	2.00	252.55	-2.09	
6644.43	5.05	252.55	6623.36	-144.38	-459.32	0.00	0.00	-90.33	
7561.20	90.20	359.60	7209.00	430.00	-513.00	10.00	106.97	486.41	
7569.88	90.21	359.69	7208.97	438.68	-513.05	1.00	84.67	495.04	
11736.92	90.21	359.69	7194.00	4605.64	-535.86	0.00	0.00	4636.71	

WELLBORE TARGET DETAILS (MAP CO-ORDINATES AND LAT/LONG)							
Name	TVD	+N-S	+E-W	Latitude	Longitude	Shape	
RATTLER 26N-33HZ BHL	7194.00	4605.64	-535.86	40.187524	-104.772993	Point	

FORMATION TOP DETAILS		
TVDPath	MDPath	Formation
3754.00	3763.89	PARKMAN
4556.00	4569.01	SUSSEX
7085.00	7174.39	SHARON SPRINGS
7154.00	7305.64	NIOBRARA A
7179.00	7372.63	NIOBRARA B

CASING DETAILS			
TVD	MD	Name	Size
900.00	900.00	9 5/8"	9-5/8
7209.00	7561.20	7"	7



# Anadarko Petroleum Corp

## Planning Report

<b>Database:</b>	edmp	<b>Local Co-ordinate Reference:</b>	Well RATTLER 26N-33HZ
<b>Company:</b>	US ROCKIES REGION PLANNING	<b>TVD Reference:</b>	17' RKB + 4967' GL @ 4984.00ft
<b>Project:</b>	COLORADO NORTHERN ZONE - 83	<b>MD Reference:</b>	17' RKB + 4967' GL @ 4984.00ft
<b>Site:</b>	WELD_RATTLER PAD 2	<b>North Reference:</b>	True
<b>Well:</b>	RATTLER 26N-33HZ	<b>Survey Calculation Method:</b>	Minimum Curvature
<b>Wellbore:</b>	RATTLER 26N-33HZ		
<b>Design:</b>	RATTLER 26N-33HZ (wp01)		

<b>Project</b>	COLORADO NORTHERN ZONE - 83		
<b>Map System:</b>	US State Plane 1983	<b>System Datum:</b>	Mean Sea Level
<b>Geo Datum:</b>	North American Datum 1983		
<b>Map Zone:</b>	Colorado Northern Zone		

<b>Site</b>	WELD_RATTLER PAD 2				
<b>Site Position:</b>	<b>Northing:</b>	1,307,389.22 usft	<b>Latitude:</b>	40.174881	
<b>From:</b>	Lat/Long	<b>Easting:</b>	3,203,684.99 usft	<b>Longitude:</b>	-104.771075
<b>Position Uncertainty:</b>	0.00 ft	<b>Slot Radius:</b>	13-3/16 "	<b>Grid Convergence:</b>	0.47 °

<b>Well</b>	RATTLER 26N-33HZ					
<b>Well Position</b>	<b>+N/-S</b>	0.00 ft	<b>Northing:</b>	1,307,389.22 usft	<b>Latitude:</b>	40.174881
	<b>+E/-W</b>	0.00 ft	<b>Easting:</b>	3,203,684.99 usft	<b>Longitude:</b>	-104.771075
<b>Position Uncertainty</b>	0.00 ft	<b>Wellhead Elevation:</b>		<b>Ground Level:</b>	4,967.00 ft	

<b>Wellbore</b>	RATTLER 26N-33HZ				
<b>Magnetics</b>	<b>Model Name</b>	<b>Sample Date</b>	<b>Declination (°)</b>	<b>Dip Angle (°)</b>	<b>Field Strength (nT)</b>
	IGRF2010	10/24/2011	8.80	66.86	52,973

<b>Design</b>	RATTLER 26N-33HZ (wp01)			
<b>Audit Notes:</b>				
<b>Version:</b>	<b>Phase:</b>	PLAN	<b>Tie On Depth:</b>	0.00
<b>Vertical Section:</b>	<b>Depth From (TVD) (ft)</b>	<b>+N/-S (ft)</b>	<b>+E/-W (ft)</b>	<b>Direction (°)</b>
	0.00	0.00	0.00	353.36

<b>Plan Sections</b>										
Measured Depth (ft)	Inclination (°)	Azimuth (°)	Vertical Depth (ft)	+N/-S (ft)	+E/-W (ft)	Dogleg Rate (°/100usft)	Build Rate (°/100usft)	Turn Rate (°/100usft)	TFO (°)	Target
0.00	0.00	0.00	0.00	0.00	0.00	0.00	0.00	0.00	0.00	
1,050.00	0.00	0.00	1,050.00	0.00	0.00	0.00	0.00	0.00	0.00	
1,302.57	5.05	252.55	1,302.25	-3.34	-10.61	2.00	2.00	0.00	252.55	
6,644.43	5.05	252.55	6,623.36	-144.38	-459.32	0.00	0.00	0.00	0.00	
7,561.20	90.20	359.60	7,209.00	430.00	-513.00	10.00	9.29	11.68	106.97	
7,569.88	90.21	359.69	7,208.97	438.68	-513.05	1.00	0.09	1.00	84.67	
11,736.92	90.21	359.69	7,194.00	4,605.64	-535.86	0.00	0.00	0.00	0.00	RATTLER 26N-33HZ

# Anadarko Petroleum Corp

## Planning Report

<b>Database:</b>	edmp	<b>Local Co-ordinate Reference:</b>	Well RATTLER 26N-33HZ
<b>Company:</b>	US ROCKIES REGION PLANNING	<b>TVD Reference:</b>	17' RKB + 4967' GL @ 4984.00ft
<b>Project:</b>	COLORADO NORTHERN ZONE - 83	<b>MD Reference:</b>	17' RKB + 4967' GL @ 4984.00ft
<b>Site:</b>	WELD_RATTLER PAD 2	<b>North Reference:</b>	True
<b>Well:</b>	RATTLER 26N-33HZ	<b>Survey Calculation Method:</b>	Minimum Curvature
<b>Wellbore:</b>	RATTLER 26N-33HZ		
<b>Design:</b>	RATTLER 26N-33HZ (wp01)		

Planned Survey										
Measured Depth (ft)	Inclination (°)	Azimuth (°)	Vertical Depth (ft)	+N/-S (ft)	+E/-W (ft)	Vertical Section (ft)	Dogleg Rate (°/100usft)	Build Rate (°/100usft)	Turn Rate (°/100usft)	
0.00	0.00	0.00	0.00	0.00	0.00	0.00	0.00	0.00	0.00	0.00
100.00	0.00	0.00	100.00	0.00	0.00	0.00	0.00	0.00	0.00	0.00
200.00	0.00	0.00	200.00	0.00	0.00	0.00	0.00	0.00	0.00	0.00
300.00	0.00	0.00	300.00	0.00	0.00	0.00	0.00	0.00	0.00	0.00
400.00	0.00	0.00	400.00	0.00	0.00	0.00	0.00	0.00	0.00	0.00
500.00	0.00	0.00	500.00	0.00	0.00	0.00	0.00	0.00	0.00	0.00
600.00	0.00	0.00	600.00	0.00	0.00	0.00	0.00	0.00	0.00	0.00
700.00	0.00	0.00	700.00	0.00	0.00	0.00	0.00	0.00	0.00	0.00
800.00	0.00	0.00	800.00	0.00	0.00	0.00	0.00	0.00	0.00	0.00
900.00	0.00	0.00	900.00	0.00	0.00	0.00	0.00	0.00	0.00	0.00
<b>9 5/8"</b>										
1,000.00	0.00	0.00	1,000.00	0.00	0.00	0.00	0.00	0.00	0.00	0.00
1,050.00	0.00	0.00	1,050.00	0.00	0.00	0.00	0.00	0.00	0.00	0.00
<b>Start Build 2.00</b>										
1,100.00	1.00	252.55	1,100.00	-0.13	-0.42	-0.08	2.00	2.00	0.00	0.00
1,200.00	3.00	252.55	1,199.93	-1.18	-3.75	-0.74	2.00	2.00	0.00	0.00
1,300.00	5.00	252.55	1,299.68	-3.27	-10.40	-2.05	2.00	2.00	0.00	0.00
1,302.57	5.05	252.55	1,302.25	-3.34	-10.61	-2.09	2.00	2.00	0.00	0.00
<b>Start 5341.86 hold at 1302.57 MD</b>										
1,400.00	5.05	252.55	1,399.29	-5.91	-18.80	-3.70	0.00	0.00	0.00	0.00
1,500.00	5.05	252.55	1,498.91	-8.55	-27.20	-5.35	0.00	0.00	0.00	0.00
1,600.00	5.05	252.55	1,598.52	-11.19	-35.60	-7.00	0.00	0.00	0.00	0.00
1,700.00	5.05	252.55	1,698.13	-13.83	-44.00	-8.65	0.00	0.00	0.00	0.00
1,800.00	5.05	252.55	1,797.74	-16.47	-52.40	-10.30	0.00	0.00	0.00	0.00
1,900.00	5.05	252.55	1,897.35	-19.11	-60.80	-11.96	0.00	0.00	0.00	0.00
2,000.00	5.05	252.55	1,996.96	-21.75	-69.20	-13.61	0.00	0.00	0.00	0.00
2,100.00	5.05	252.55	2,096.58	-24.39	-77.60	-15.26	0.00	0.00	0.00	0.00
2,200.00	5.05	252.55	2,196.19	-27.03	-86.00	-16.91	0.00	0.00	0.00	0.00
2,300.00	5.05	252.55	2,295.80	-29.67	-94.40	-18.56	0.00	0.00	0.00	0.00
2,400.00	5.05	252.55	2,395.41	-32.31	-102.80	-20.22	0.00	0.00	0.00	0.00
2,500.00	5.05	252.55	2,495.02	-34.95	-111.20	-21.87	0.00	0.00	0.00	0.00
2,600.00	5.05	252.55	2,594.63	-37.59	-119.60	-23.52	0.00	0.00	0.00	0.00
2,700.00	5.05	252.55	2,694.25	-40.23	-128.00	-25.17	0.00	0.00	0.00	0.00
2,800.00	5.05	252.55	2,793.86	-42.87	-136.40	-26.82	0.00	0.00	0.00	0.00
2,900.00	5.05	252.55	2,893.47	-45.51	-144.80	-28.47	0.00	0.00	0.00	0.00
3,000.00	5.05	252.55	2,993.08	-48.15	-153.20	-30.13	0.00	0.00	0.00	0.00
3,100.00	5.05	252.55	3,092.69	-50.79	-161.60	-31.78	0.00	0.00	0.00	0.00
3,200.00	5.05	252.55	3,192.30	-53.43	-170.00	-33.43	0.00	0.00	0.00	0.00
3,300.00	5.05	252.55	3,291.91	-56.07	-178.40	-35.08	0.00	0.00	0.00	0.00
3,400.00	5.05	252.55	3,391.53	-58.71	-186.80	-36.73	0.00	0.00	0.00	0.00
3,500.00	5.05	252.55	3,491.14	-61.36	-195.20	-38.39	0.00	0.00	0.00	0.00
3,600.00	5.05	252.55	3,590.75	-64.00	-203.60	-40.04	0.00	0.00	0.00	0.00
3,700.00	5.05	252.55	3,690.36	-66.64	-212.00	-41.69	0.00	0.00	0.00	0.00
3,763.89	5.05	252.55	3,754.00	-68.32	-217.36	-42.74	0.00	0.00	0.00	0.00
<b>PARKMAN</b>										
3,800.00	5.05	252.55	3,789.97	-69.28	-220.40	-43.34	0.00	0.00	0.00	0.00
3,900.00	5.05	252.55	3,889.58	-71.92	-228.80	-44.99	0.00	0.00	0.00	0.00
4,000.00	5.05	252.55	3,989.20	-74.56	-237.20	-46.64	0.00	0.00	0.00	0.00
4,100.00	5.05	252.55	4,088.81	-77.20	-245.60	-48.30	0.00	0.00	0.00	0.00
4,200.00	5.05	252.55	4,188.42	-79.84	-254.00	-49.95	0.00	0.00	0.00	0.00
4,300.00	5.05	252.55	4,288.03	-82.48	-262.39	-51.60	0.00	0.00	0.00	0.00
4,400.00	5.05	252.55	4,387.64	-85.12	-270.79	-53.25	0.00	0.00	0.00	0.00
4,500.00	5.05	252.55	4,487.25	-87.76	-279.19	-54.90	0.00	0.00	0.00	0.00
4,569.01	5.05	252.55	4,556.00	-89.58	-284.99	-56.04	0.00	0.00	0.00	0.00
<b>SUSSEX</b>										

# Anadarko Petroleum Corp

## Planning Report

<b>Database:</b>	edmp	<b>Local Co-ordinate Reference:</b>	Well RATTLER 26N-33HZ
<b>Company:</b>	US ROCKIES REGION PLANNING	<b>TVD Reference:</b>	17' RKB + 4967' GL @ 4984.00ft
<b>Project:</b>	COLORADO NORTHERN ZONE - 83	<b>MD Reference:</b>	17' RKB + 4967' GL @ 4984.00ft
<b>Site:</b>	WELD_RATTLER PAD 2	<b>North Reference:</b>	True
<b>Well:</b>	RATTLER 26N-33HZ	<b>Survey Calculation Method:</b>	Minimum Curvature
<b>Wellbore:</b>	RATTLER 26N-33HZ		
<b>Design:</b>	RATTLER 26N-33HZ (wp01)		

Planned Survey									
Measured Depth (ft)	Inclination (°)	Azimuth (°)	Vertical Depth (ft)	+N/-S (ft)	+E/-W (ft)	Vertical Section (ft)	Dogleg Rate (°/100usft)	Build Rate (°/100usft)	Turn Rate (°/100usft)
4,600.00	5.05	252.55	4,586.87	-90.40	-287.59	-56.56	0.00	0.00	0.00
4,700.00	5.05	252.55	4,686.48	-93.04	-295.99	-58.21	0.00	0.00	0.00
4,800.00	5.05	252.55	4,786.09	-95.68	-304.39	-59.86	0.00	0.00	0.00
4,900.00	5.05	252.55	4,885.70	-98.32	-312.79	-61.51	0.00	0.00	0.00
5,000.00	5.05	252.55	4,985.31	-100.96	-321.19	-63.16	0.00	0.00	0.00
5,100.00	5.05	252.55	5,084.92	-103.60	-329.59	-64.82	0.00	0.00	0.00
5,200.00	5.05	252.55	5,184.54	-106.24	-337.99	-66.47	0.00	0.00	0.00
5,300.00	5.05	252.55	5,284.15	-108.88	-346.39	-68.12	0.00	0.00	0.00
5,400.00	5.05	252.55	5,383.76	-111.52	-354.79	-69.77	0.00	0.00	0.00
5,500.00	5.05	252.55	5,483.37	-114.16	-363.19	-71.42	0.00	0.00	0.00
5,600.00	5.05	252.55	5,582.98	-116.80	-371.59	-73.07	0.00	0.00	0.00
5,700.00	5.05	252.55	5,682.59	-119.44	-379.99	-74.73	0.00	0.00	0.00
5,800.00	5.05	252.55	5,782.21	-122.08	-388.39	-76.38	0.00	0.00	0.00
5,900.00	5.05	252.55	5,881.82	-124.72	-396.79	-78.03	0.00	0.00	0.00
6,000.00	5.05	252.55	5,981.43	-127.36	-405.19	-79.68	0.00	0.00	0.00
6,100.00	5.05	252.55	6,081.04	-130.00	-413.59	-81.33	0.00	0.00	0.00
6,200.00	5.05	252.55	6,180.65	-132.64	-421.99	-82.99	0.00	0.00	0.00
6,300.00	5.05	252.55	6,280.26	-135.28	-430.39	-84.64	0.00	0.00	0.00
6,400.00	5.05	252.55	6,379.87	-137.92	-438.79	-86.29	0.00	0.00	0.00
6,500.00	5.05	252.55	6,479.49	-140.56	-447.19	-87.94	0.00	0.00	0.00
6,600.00	5.05	252.55	6,579.10	-143.20	-455.59	-89.59	0.00	0.00	0.00
6,644.43	5.05	252.55	6,623.36	-144.38	-459.32	-90.33	0.00	0.00	0.00
<b>Start DLS 10.00 TFO 106.97</b>									
6,700.00	6.32	309.84	6,678.69	-143.15	-464.01	-88.57	10.00	2.28	103.10
6,800.00	14.87	341.02	6,776.96	-127.45	-472.43	-72.00	10.00	8.55	31.18
6,900.00	24.53	348.91	6,871.02	-94.87	-480.62	-38.69	10.00	9.66	7.89
7,000.00	34.38	352.49	6,957.99	-46.38	-488.32	10.37	10.00	9.85	3.58
7,100.00	44.29	354.61	7,035.24	16.53	-495.31	73.66	10.00	9.91	2.13
7,174.39	51.68	355.75	7,085.00	71.57	-499.91	128.86	10.00	9.94	1.53
<b>SHARON SPRINGS</b>									
7,200.00	54.23	356.09	7,100.43	91.95	-501.37	149.28	10.00	9.94	1.32
7,300.00	64.18	357.24	7,151.57	177.60	-506.31	234.92	10.00	9.95	1.15
7,305.64	64.74	357.30	7,154.00	182.68	-506.55	240.00	10.00	9.96	1.03
<b>NIOBRARA A</b>									
7,372.64	71.41	357.95	7,179.00	244.74	-509.12	301.94	10.00	9.96	0.98
<b>NIOBRARA B</b>									
7,396.21	73.76	358.17	7,186.06	267.22	-509.88	324.36	10.00	9.96	0.93
<b>RATTLER 26N-33HZ heel</b>									
7,400.00	74.14	358.21	7,187.10	270.86	-509.99	327.99	10.00	9.96	0.91
7,500.00	84.10	359.08	7,205.96	368.91	-512.30	425.65	10.00	9.96	0.88
7,561.20	90.20	359.60	7,209.00	430.00	-513.00	486.41	10.00	9.96	0.84
<b>Start DLS 1.00 TFO 84.67 - 7"</b>									
7,569.88	90.21	359.69	7,208.97	438.68	-513.05	495.04	1.00	0.09	1.00
<b>Start 4167.05 hold at 7569.88 MD</b>									
7,600.00	90.21	359.69	7,208.86	468.80	-513.22	524.97	0.00	0.00	0.00
7,700.00	90.21	359.69	7,208.50	568.80	-513.77	624.37	0.00	0.00	0.00
7,800.00	90.21	359.69	7,208.14	668.80	-514.31	723.76	0.00	0.00	0.00
7,900.00	90.21	359.69	7,207.78	768.80	-514.86	823.15	0.00	0.00	0.00
8,000.00	90.21	359.69	7,207.42	868.80	-515.41	922.54	0.00	0.00	0.00
8,100.00	90.21	359.69	7,207.07	968.79	-515.96	1,021.93	0.00	0.00	0.00
8,200.00	90.21	359.69	7,206.71	1,068.79	-516.50	1,121.32	0.00	0.00	0.00
8,300.00	90.21	359.69	7,206.35	1,168.79	-517.05	1,220.71	0.00	0.00	0.00
8,400.00	90.21	359.69	7,205.99	1,268.79	-517.60	1,320.10	0.00	0.00	0.00
8,500.00	90.21	359.69	7,205.63	1,368.78	-518.14	1,419.49	0.00	0.00	0.00

# Anadarko Petroleum Corp

## Planning Report

<b>Database:</b>	edmp	<b>Local Co-ordinate Reference:</b>	Well RATTLER 26N-33HZ
<b>Company:</b>	US ROCKIES REGION PLANNING	<b>TVD Reference:</b>	17' RKB + 4967' GL @ 4984.00ft
<b>Project:</b>	COLORADO NORTHERN ZONE - 83	<b>MD Reference:</b>	17' RKB + 4967' GL @ 4984.00ft
<b>Site:</b>	WELD_RATTLER PAD 2	<b>North Reference:</b>	True
<b>Well:</b>	RATTLER 26N-33HZ	<b>Survey Calculation Method:</b>	Minimum Curvature
<b>Wellbore:</b>	RATTLER 26N-33HZ		
<b>Design:</b>	RATTLER 26N-33HZ (wp01)		

Planned Survey										
Measured Depth (ft)	Inclination (°)	Azimuth (°)	Vertical Depth (ft)	+N/-S (ft)	+E/-W (ft)	Vertical Section (ft)	Dogleg Rate (°/100usft)	Build Rate (°/100usft)	Turn Rate (°/100usft)	
8,600.00	90.21	359.69	7,205.27	1,468.78	-518.69	1,518.89	0.00	0.00	0.00	
8,700.00	90.21	359.69	7,204.91	1,568.78	-519.24	1,618.28	0.00	0.00	0.00	
8,800.00	90.21	359.69	7,204.55	1,668.78	-519.79	1,717.67	0.00	0.00	0.00	
8,900.00	90.21	359.69	7,204.19	1,768.78	-520.33	1,817.06	0.00	0.00	0.00	
9,000.00	90.21	359.69	7,203.83	1,868.77	-520.88	1,916.45	0.00	0.00	0.00	
9,100.00	90.21	359.69	7,203.47	1,968.77	-521.43	2,015.84	0.00	0.00	0.00	
9,200.00	90.21	359.69	7,203.11	2,068.77	-521.97	2,115.23	0.00	0.00	0.00	
9,300.00	90.21	359.69	7,202.75	2,168.77	-522.52	2,214.62	0.00	0.00	0.00	
9,400.00	90.21	359.69	7,202.40	2,268.77	-523.07	2,314.01	0.00	0.00	0.00	
9,500.00	90.21	359.69	7,202.04	2,368.76	-523.62	2,413.40	0.00	0.00	0.00	
9,600.00	90.21	359.69	7,201.68	2,468.76	-524.16	2,512.80	0.00	0.00	0.00	
9,700.00	90.21	359.69	7,201.32	2,568.76	-524.71	2,612.19	0.00	0.00	0.00	
9,800.00	90.21	359.69	7,200.96	2,668.76	-525.26	2,711.58	0.00	0.00	0.00	
9,900.00	90.21	359.69	7,200.60	2,768.75	-525.81	2,810.97	0.00	0.00	0.00	
10,000.00	90.21	359.69	7,200.24	2,868.75	-526.35	2,910.36	0.00	0.00	0.00	
10,100.00	90.21	359.69	7,199.88	2,968.75	-526.90	3,009.75	0.00	0.00	0.00	
10,200.00	90.21	359.69	7,199.52	3,068.75	-527.45	3,109.14	0.00	0.00	0.00	
10,300.00	90.21	359.69	7,199.16	3,168.75	-527.99	3,208.53	0.00	0.00	0.00	
10,400.00	90.21	359.69	7,198.80	3,268.74	-528.54	3,307.92	0.00	0.00	0.00	
10,500.00	90.21	359.69	7,198.44	3,368.74	-529.09	3,407.32	0.00	0.00	0.00	
10,600.00	90.21	359.69	7,198.08	3,468.74	-529.64	3,506.71	0.00	0.00	0.00	
10,700.00	90.21	359.69	7,197.73	3,568.74	-530.18	3,606.10	0.00	0.00	0.00	
10,800.00	90.21	359.69	7,197.37	3,668.74	-530.73	3,705.49	0.00	0.00	0.00	
10,900.00	90.21	359.69	7,197.01	3,768.73	-531.28	3,804.88	0.00	0.00	0.00	
11,000.00	90.21	359.69	7,196.65	3,868.73	-531.83	3,904.27	0.00	0.00	0.00	
11,100.00	90.21	359.69	7,196.29	3,968.73	-532.37	4,003.66	0.00	0.00	0.00	
11,200.00	90.21	359.69	7,195.93	4,068.73	-532.92	4,103.05	0.00	0.00	0.00	
11,300.00	90.21	359.69	7,195.57	4,168.72	-533.47	4,202.44	0.00	0.00	0.00	
11,400.00	90.21	359.69	7,195.21	4,268.72	-534.01	4,301.84	0.00	0.00	0.00	
11,500.00	90.21	359.69	7,194.85	4,368.72	-534.56	4,401.23	0.00	0.00	0.00	
11,600.00	90.21	359.69	7,194.49	4,468.72	-535.11	4,500.62	0.00	0.00	0.00	
11,700.00	90.21	359.69	7,194.13	4,568.72	-535.66	4,600.01	0.00	0.00	0.00	
11,736.92	90.21	359.69	7,194.00	4,605.64	-535.86	4,636.71	0.00	0.00	0.00	
<b>TD at 11736.92 - RATTLER 26N-33HZ BHL</b>										

Design Targets										
Target Name	Dip Angle (°)	Dip Dir. (°)	TVD (ft)	+N/-S (ft)	+E/-W (ft)	Northing (usft)	Easting (usft)	Latitude	Longitude	
RATTLER 26N-33HZ BHL - hit/miss target - Shape - plan hits target center - Point	0.00	0.00	7,194.00	4,605.64	-535.86	1,311,990.28	3,203,111.30	40.187524	-104.772993	

Casing Points						
Measured Depth (ft)	Vertical Depth (ft)	Name	Casing Diameter (")	Hole Diameter (")		
900.00	900.00	9 5/8"	9-5/8	12-1/4		
7,561.20	7,209.00	7"	7	8-3/4		

# Anadarko Petroleum Corp

## Planning Report

<b>Database:</b>	edmp	<b>Local Co-ordinate Reference:</b>	Well RATTLER 26N-33HZ
<b>Company:</b>	US ROCKIES REGION PLANNING	<b>TVD Reference:</b>	17' RKB + 4967' GL @ 4984.00ft
<b>Project:</b>	COLORADO NORTHERN ZONE - 83	<b>MD Reference:</b>	17' RKB + 4967' GL @ 4984.00ft
<b>Site:</b>	WELD_RATTLER PAD 2	<b>North Reference:</b>	True
<b>Well:</b>	RATTLER 26N-33HZ	<b>Survey Calculation Method:</b>	Minimum Curvature
<b>Wellbore:</b>	RATTLER 26N-33HZ		
<b>Design:</b>	RATTLER 26N-33HZ (wp01)		

Formations					
Measured Depth (ft)	Vertical Depth (ft)	Name	Lithology	Dip (°)	Dip Direction (°)
3,763.89	3,754.00	PARKMAN		0.00	
4,569.01	4,556.00	SUSSEX		0.00	
7,174.39	7,085.00	SHARON SPRINGS		0.00	
7,305.64	7,154.00	NIOBRARA A		0.00	
7,372.64	7,179.00	NIOBRARA B		0.00	

Plan Annotations					
Measured Depth (ft)	Vertical Depth (ft)	Local Coordinates		Comment	
		+N/-S (ft)	+E/-W (ft)		
1,050.00	1,050.00	0.00	0.00	Start Build 2.00	
1,302.57	1,302.25	-3.34	-10.61	Start 5341.86 hold at 1302.57 MD	
6,644.43	6,623.36	-144.38	-459.32	Start DLS 10.00 TFO 106.97	
7,561.20	7,209.00	430.00	-513.00	Start DLS 1.00 TFO 84.67	
7,569.88	7,208.97	438.68	-513.05	Start 4167.05 hold at 7569.88 MD	
11,736.92	7,194.00	4,605.64	-535.86	TD at 11736.92	