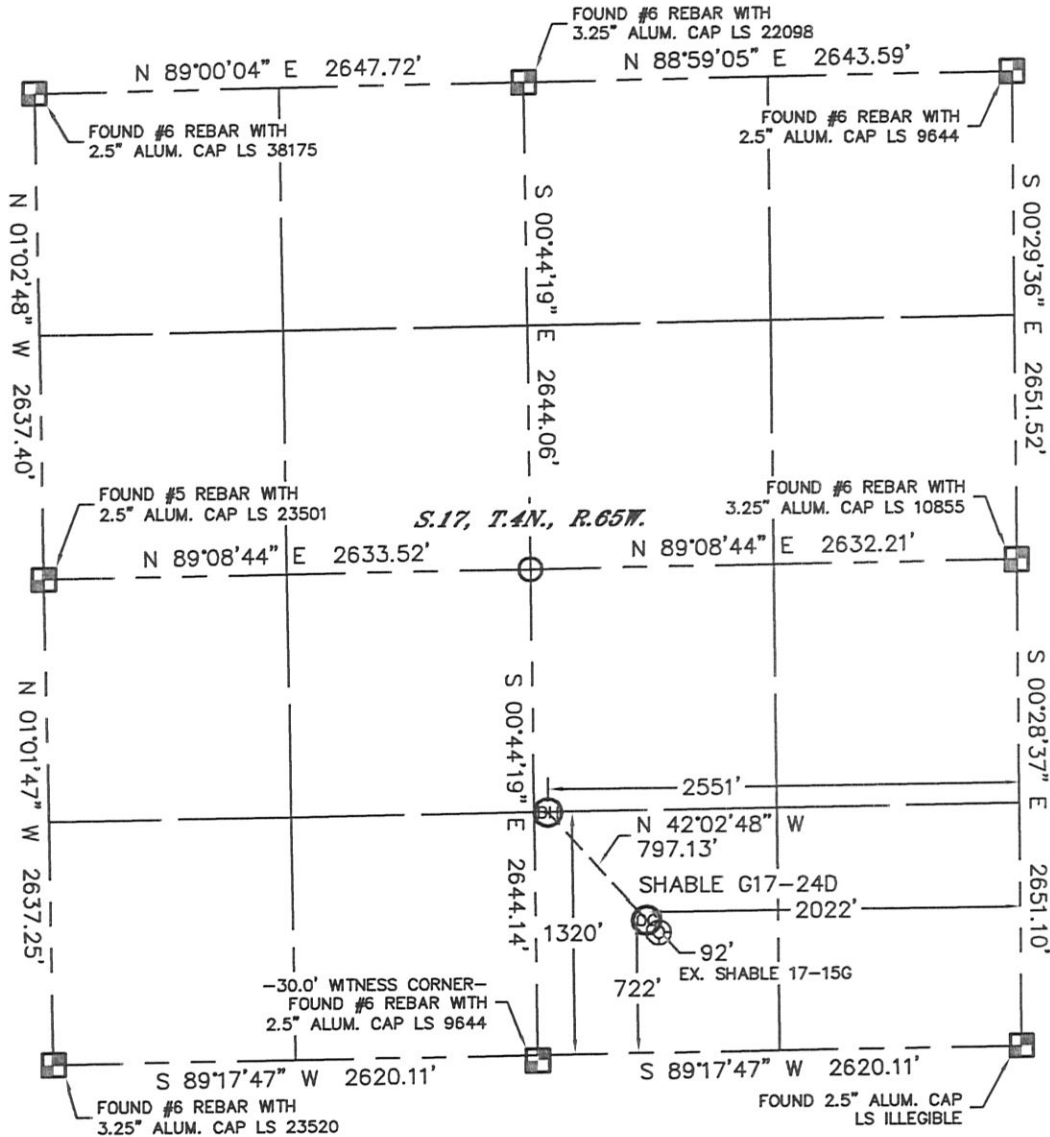


Lat40°, Inc. 1635 Foxtrail Drive, Suite 325 Loveland, CO 970-776-3321

WELL LOCATION CERTIFICATE

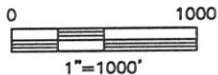
THIS MAP DOES NOT REPRESENT A BOUNDARY SURVEY

SECTION: 17
TOWNSHIP: 4N
RANGE: 65W



In accordance with a request from Ryan Hawkins with Noble Energy Inc. Lat40°, Inc. has determined the surface location of the SHABLE G17-24D to be 722' from the SOUTH line and 2022' from the EAST line and the bottom hole to be 1320' from the SOUTH line and 2551' from the EAST line as measured at right angles from the section lines of Section 17, Township 4 North, Range 65 West of the Sixth Principal Meridian, County of Weld, State of Colorado.

I hereby state that this Well Location Certificate was prepared by me, or under my direct supervision, that the fieldwork was completed on 8/19/11, for and on behalf of Noble Energy Inc. That this is not a Land Survey Plat or an Improvement Survey Plat, and that it is not to be relied upon for establishment of fence, building, or other future improvement lines.





NOTE:

- 1) Bearings shown are Grid Bearings of the Colorado State Plane Coordinate System, North Zone, North American Datum 1983/2007. The lineal dimensions as contained herein are based upon the "U.S. Survey Foot."
- 2) Ground elevations are based on an observed GPS elevation (NAVD 1988 DATUM).
- 3) NEAREST EXISTING WELL: SHABLE 17-15G, 92'
- 4) IMPROVEMENTS: See LOCATION DRAWING for all visible improvements within 400' of disturbed area.
- 5) SURFACE USE: CROP FIELD / EX. WELL PAD
- 6) INSTRUMENT OPERATOR: AARON LUND

NOTE

According to Colorado law, you must commence any legal action based upon any defect in this W.L.C. within three years after you discover such defect. In no event, may any action based upon any defect in this survey be commenced more than ten years after the date of the certificate shown hereon. (13-80-105 C.R.S.)

LEGEND

-  = ALIQUOT MONUMENT AS DESCRIBED
-  = CALCULATED POSITION

SURFACE LOCATION
LATITUDE: 40.30714°N
LONGITUDE: 104.68476°W
PDOP: 2.1
ELEV: 4759'
1/4, 1/4: SW1/4SE1/4
NEAREST PROPERTY LINE: ±377' SW

BOTTOM HOLE
LATITUDE: 40.30878°N
LONGITUDE: 104.68665°W

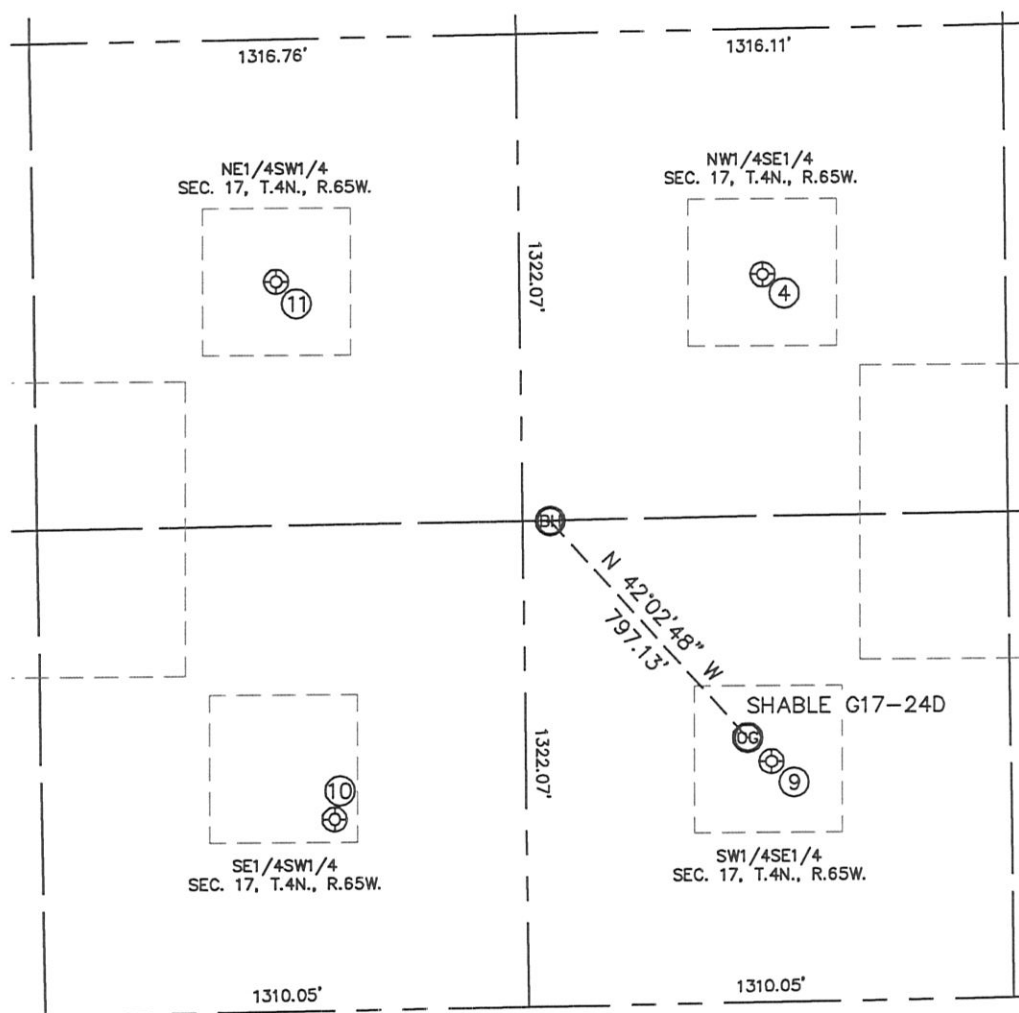


Brian T. Brinkman—On behalf of Lat40°
Colorado Licensed Professional
Land Surveyor No. 38175
PROJECT#: 2011206

SITE SKETCH

SHABLE G17-24D

SECTION: 17
TOWNSHIP: 4N
RANGE: 65W



④

SHABLE 17-10G
NW1/4SE1/4
1979' FSL
1971' FEL
LAT-40.31060°N
LONG-104.68457°W
PDOP: 1.5
ELEV: 4755'

⑨

SHABLE 17-15G
SW1/4SE1/4
655' FSL
1958' FEL
LAT-40.30696°N
LONG-104.68453°W
PDOP: 2.5
ELEV: 4760'

⑩

HSR-GETZ 14-17
SE1/4SW1/4
520' FSL
2103' FWL
LAT-40.30658°N
LONG-104.68877°W
PDOP: 2.2
ELEV: 4750'

⑪

HSR-EVANS 11-17
NE1/4SW1/4
1983' FSL
1971' FWL
LAT-40.31059°N
LONG-104.68929°W
PDOP: 1.6
ELEV: 4734'

