

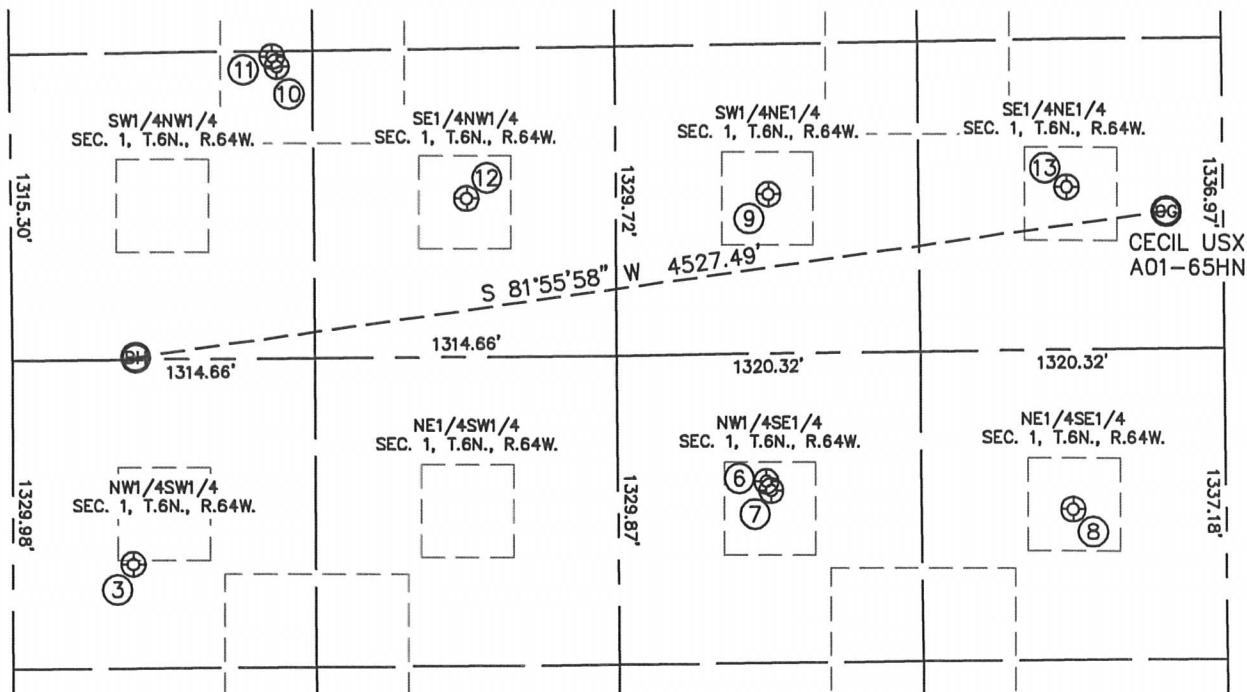
PROJECT#: 2011186

Lat40°, Inc. 1635 Foxtrail Drive, Suite 325 Loveland, CO 970-776-3321

SITE SKETCH

CECIL USX A01-65HN

SECTION: 1
TOWNSHIP: 6N
RANGE: 64W



③

CECIL 13-1
NW1/4SW1/4
1780' FSL
524' FWL
LAT-40.51294°N
LONG-104.50588°W
PDOP: 1.4
ELEV: 4754'

⑥

CECIL USX A01-11D
NW1/4SE1/4
2115' FSL
1996' FEL
LAT-40.51384°N
LONG-104.49597°W
PDOP: 1.3
ELEV: 4740'

⑦

CECIL USX A 1-10
NW1/4SE1/4
2075' FSL
1975' FEL
LAT-40.51373°N
LONG-104.49589°W
PDOP: 1.9
ELEV: 4739'

⑧

CECIL USX A01-09
NE1/4SE1/4
1983' FSL
664' FEL
LAT-40.51347°N
LONG-104.49118°W
PDOP: 2.0
ELEV: 4751'

⑨

CECIL-USX A1-7
SW1/4NE1/4
1983' FNL
1974' FEL
LAT-40.51723°N
LONG-104.49588°W
PDOP: 2.2
ELEV: 4757'

⑩

CECIL USX A01-05D
SW1/4NW1/4
1400' FNL
1159' FWL
LAT-40.51879°N
LONG-104.50357°W
PDOP: 1.7
ELEV: 4766'

⑪

CECIL-USX A1-19
SW1/4NW1/4
1356' FNL
1140' FWL
LAT-40.51891°N
LONG-104.50364°W
PDOP: 1.2
ELEV: 4765'

⑫

CECIL-USX A1-6
SE1/4NW1/4
1980' FNL
1980' FWL
LAT-40.51721°N
LONG-104.50062°W
PDOP: 2.2
ELEV: 4764'

⑬

CECIL USX A01-08
SE1/4NE1/4
1973' FNL
677' FEL
LAT-40.51728°N
LONG-104.49122°W
PDOP: 2.5
ELEV: 4751'

