

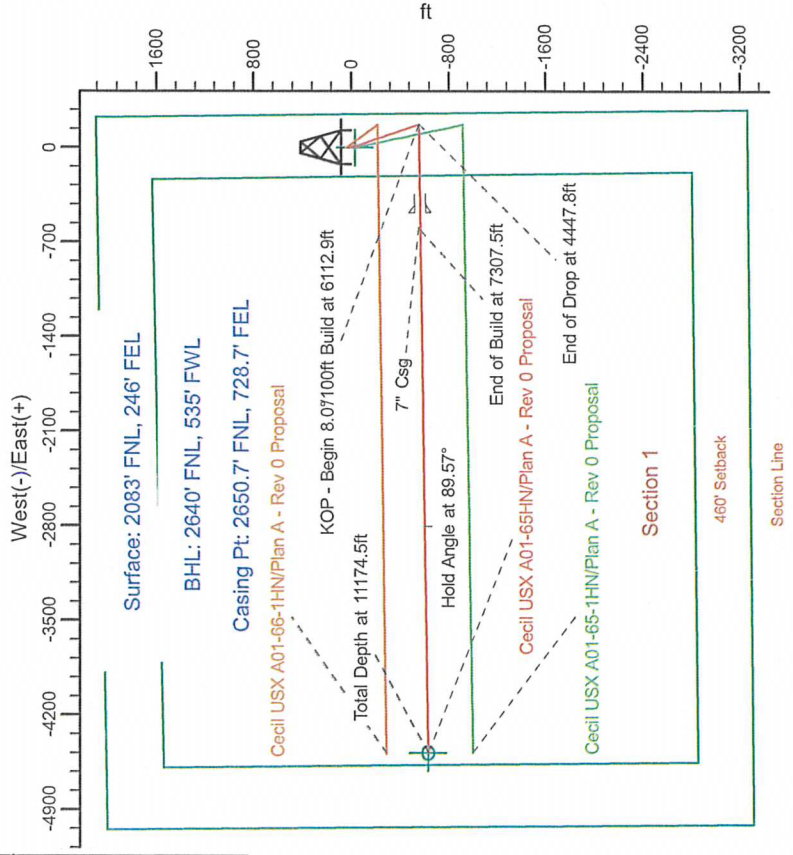
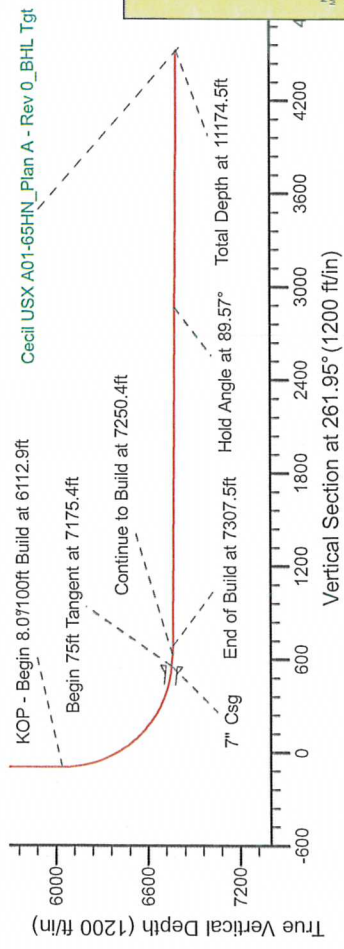
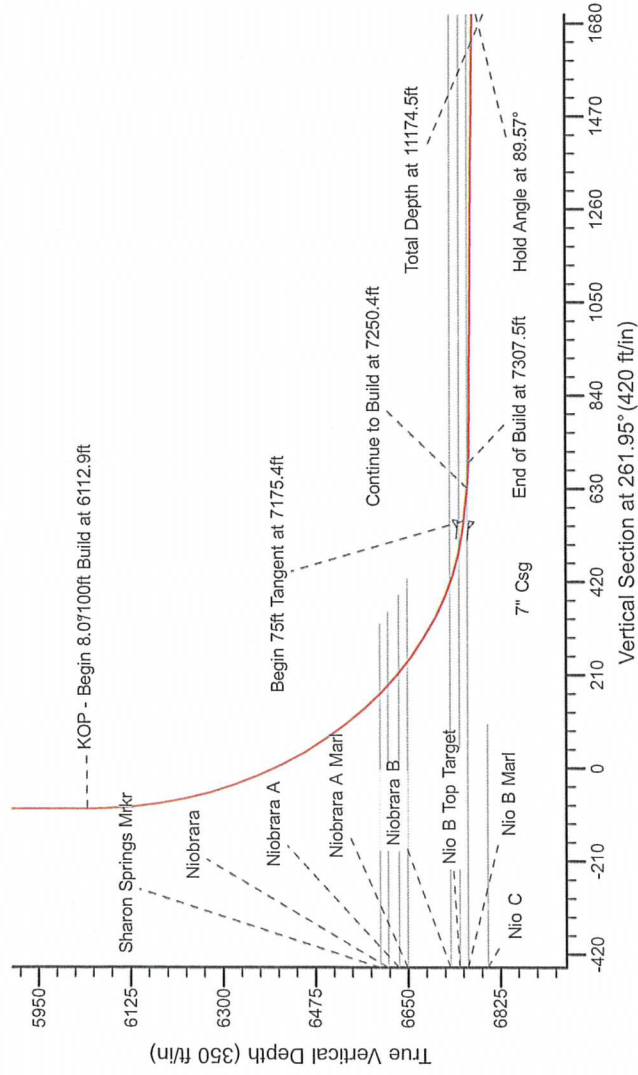
Noble Energy

Project: Weld County Colorado (NAD 83)
Site: Sec. 1, T6N, R64W
Well: Cecil USX A01-65HN
Wellbore: Plan A - Rev 0 (PERMITTING PLAN ONLY)
Design: Plan A - Rev 0 Proposal

HALLIBURTON
Sperry Drilling

SECTION DETAILS

Sec	MD	Inc	Azi	TVD	+N/-S	+E/-W	Dleg	TFace	VSect	Target
1	0.0	0.00	0.00	0.0	0.0	0.0	0.00	0.00	0.0	
2	1600.0	0.00	0.00	1600.0	0.0	0.0	0.00	0.00	0.0	
3	2200.0	15.00	162.93	2193.2	-74.6	22.9	2.50	162.93	-12.2	
4	3847.8	15.00	162.93	3784.8	-482.4	148.1	0.00	0.00	-79.1	
5	4447.8	0.00	0.00	4378.0	-557.0	171.0	2.50	180.00	-91.3	
6	6113.0	0.00	0.00	6043.2	-557.0	171.0	0.00	0.00	-91.3	
7	7175.5	85.00	269.06	6756.7	-482.7	8.00	269.06	557.4		
8	7250.5	85.00	269.06	6763.2	-569.0	0.00	0.00	631.6		
9	7307.6	89.57	269.06	6765.9	-569.9	-614.4	8.00	0.00	688.2	
10	11174.6	89.57	269.05	6795.0	-633.6	-4480.7	0.00	-96.88	4525.3	Cecil USX A01-65HN_Plan A - Rev 0_BHL Tgt-



WELL DETAILS: Cecil USX A01-65HN(NAD 83 Geodetic System)			
Northing	Easting	Ground Level:	Longitude
436711.19	1000019.02	4737.0	104°29'22.812 W
Plan: Plan A - Rev 0 Proposal (Cecil USX A01-65HN/Plan A - Rev 0 (PERMITTING PLAN ONLY))			
Created By: Erasmo Mendoza		Date: 18.28, October 27 2011	
Checked:		Date:	
Reviewed:		Date:	
Approved:		Date:	

T G M

Magnetics Model: Kpp530510
Date: 10/27/2011
Inclination: 7.98°
Dip Angle: 67.19°
Field Strength: 5205.9

Use North is 0.00 East of True North (Grid, Geomagnetic)
Magnetic North is 7.98 East of True North (Grid, Geomagnetic)
To convert a Magnetic Direction to a True Direction, Add 7.98°
To convert a True Direction to a Magnetic Direction, Subtract 7.98°