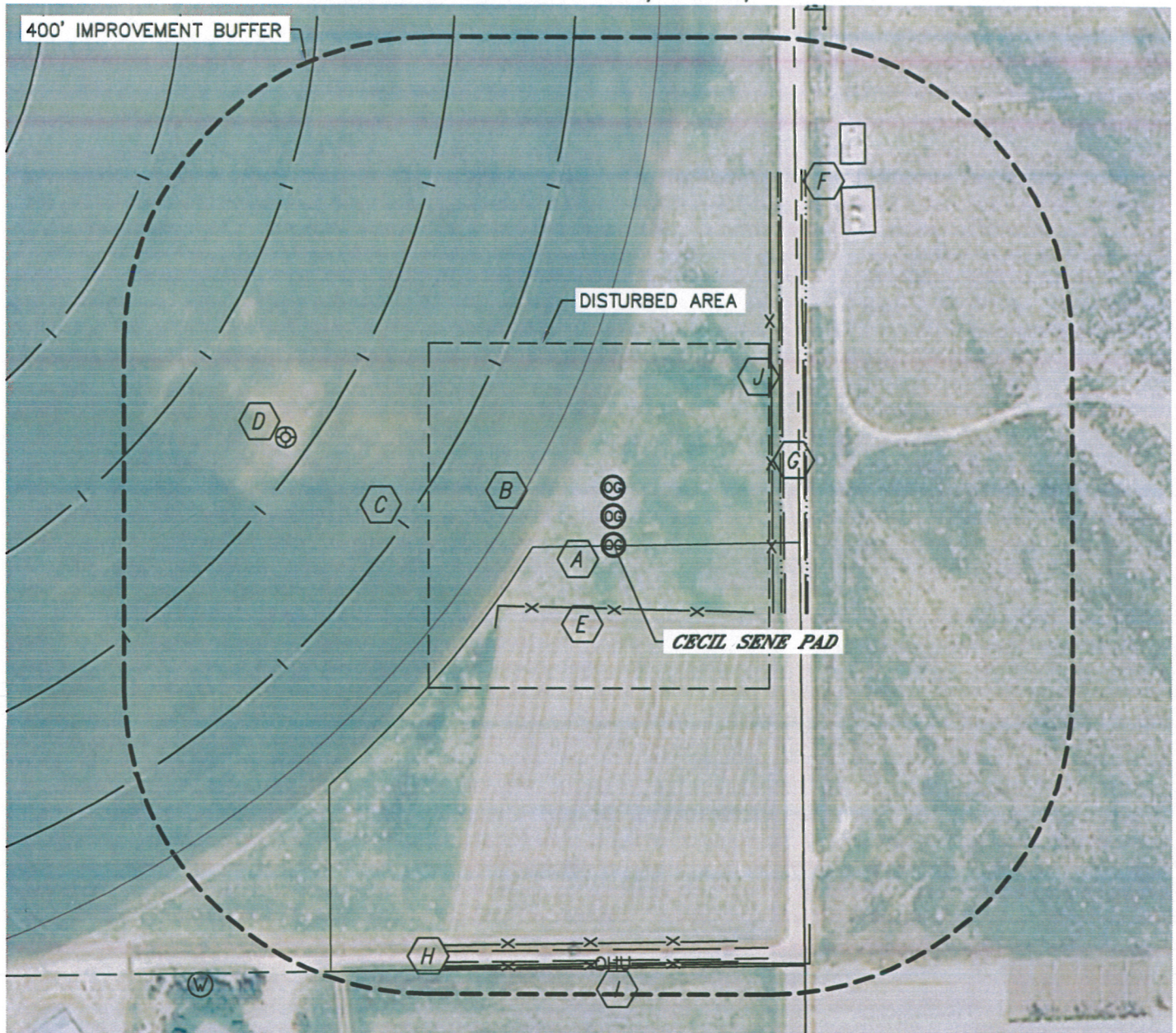


## LOCATION DRAWING

CECIL USX A01-65-1HN, 65HN, 66-1HN

SECTION: 1  
TOWNSHIP: 6N  
RANGE: 64W



### IMPROVEMENTS:

(MEASURED FROM THE CECIL USX A01-65-1HN LOCATION)

- |   |  |
|---|--|
| <b>A</b> PROPERTY LINE 1' S                 | <b>F</b> EX. PRODUCTION EQ. (GREAT WESTERN) 508' & 582' NE |
| <b>B</b> FIELD LINE 137' NW                 | <b>G</b> COUNTY ROAD 61 225' E                             |
| <b>C</b> PIVOT TRACK 248', 409' & 588' NW   | <b>H</b> PRIVATE DRIVE 529' S                              |
| <b>D</b> EX. OIL & GAS WELL 455' NW         | <b>I</b> OVERHEAD UTILITY 547' S                           |
| <b>E</b> FENCE 83' S, 210' E, 520' & 550' S | <b>J</b> BARROW DITCH 221' & 255' E                        |

NEAREST: BUILDING 820' SW, PUBLIC ROAD 225' E (CR 61),  
ABOVE GROUND UTILITY 547' S, RAILROAD 5280'+, PROPERTY LINE 1' S

