

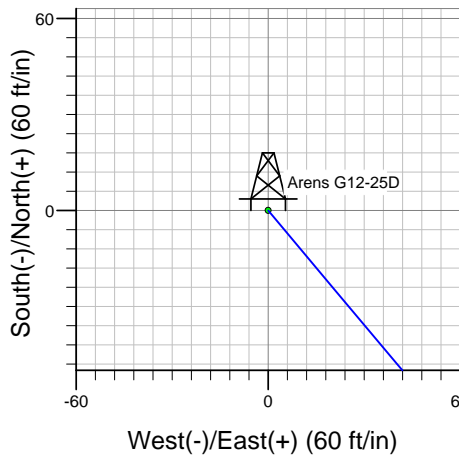
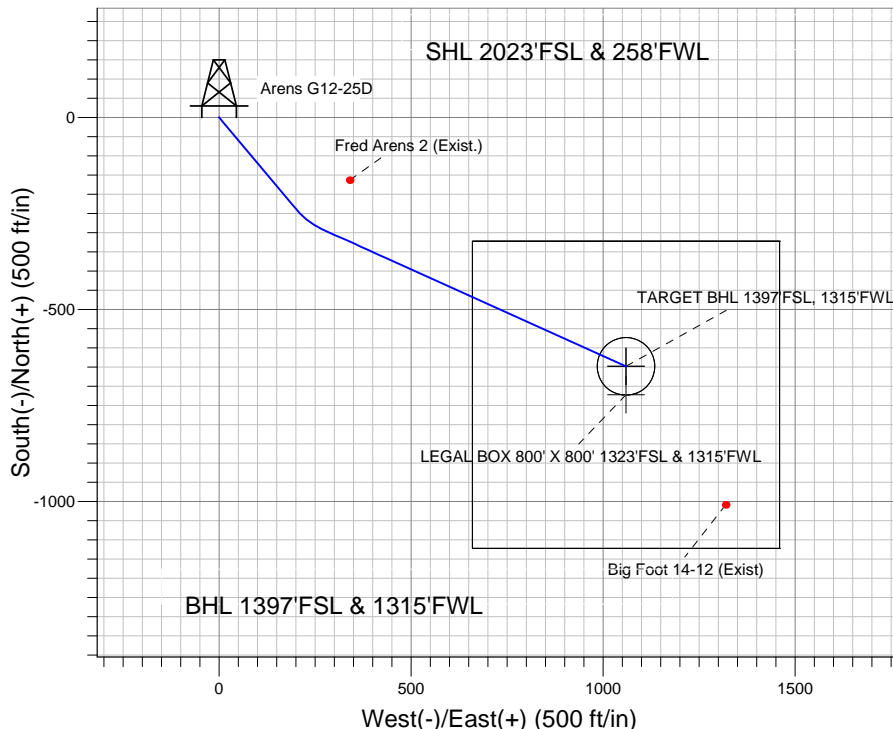
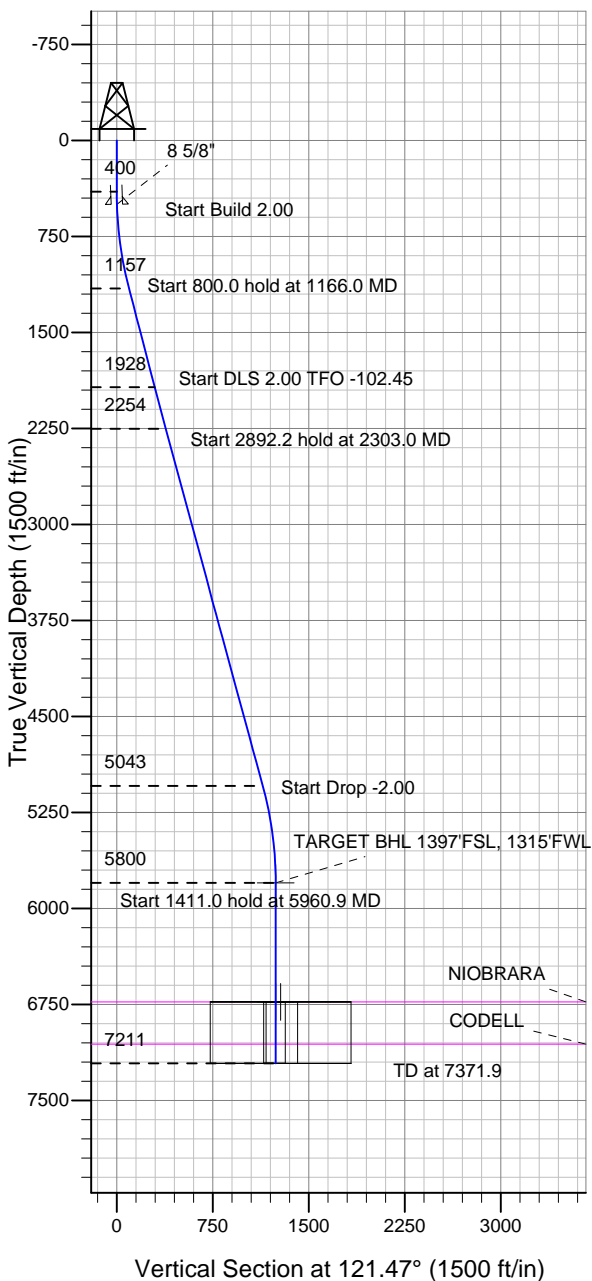
ENSIGN

Directional

Well Name: Arens G12-25D

Surface Location: Arens G12-25D Pad Sec.12-T4N-R65W
 North American Datum 1983 US State Plane 1983 Colorado Northern Zone
 Ground Elevation: 4748.0
 +N/-S +E/-W Northing Easting Latitude Longitude Slot
 0.0 0.0 1362554.17 3245358.04 40.325270 -104.619990
 Original Well Elev WELL @ 4761.0ft (Original Well Elev)

NOBLE ENERGY INC WELD COUNTY CO



Arens G12-25D Pad Sec.12-T4N-R65W
 Arens G12-25D
 Noble Arens G12-25D Plan #1 (11-11-11)
 11:04, November 11 2011



Azimuths to True North
 Magnetic North: 8.72°

Magnetic Field
 Strength: 53065.4snT
 Dip Angle: 67.00°
 Date: 11/11/2011
 Model: IGRF2010

WELLBORE TARGET DETAILS (LAT/LONG)

Name	TVD	+N/-S	+E/-W	Latitude	Longitude	Shape
TARGET BHL 1397'FSL, 1315'FWL	5800.0	-648.4	1059.6	40.323490	-104.616190	Point
LEGAL BOX 800' X 800' 1323'FSL & 1315'FWL	6731.0	-722.4	1059.6	40.323287	-104.616190	Rectangle (Sides: L800.0 W800.0)
TARGET CIRCLE 1397'FSL, 1315'FWL	6731.0	-648.4	1059.6	40.323490	-104.616190	Circle (Radius: 75.0)

SECTION DETAILS

Sec	MD	Inc	Azi	TVD	+N/-S	+E/-W	DLeg	TFace	VSec	Target
1	0.0	0.00	0.00	0.0	0.0	0.0	0.00	0.00	0.0	
2	400.0	0.00	0.00	400.0	0.0	0.0	0.00	0.00	0.0	
3	1166.0	15.32	140.00	1156.9	-78.0	65.4	2.00	140.00	96.5	
4	1966.0	15.32	140.00	1928.5	-239.9	201.3	0.00	0.00	296.9	
5	2303.0	15.32	114.29	2253.8	-292.4	270.6	2.00	-102.45	383.4	
6	5195.1	15.32	114.29	5043.3	-606.6	966.8	0.00	0.00	1141.3	
7	5960.9	0.00	0.00	5800.0	-648.4	1059.6	2.00	180.00	1242.3	TARGET BHL 1397'FSL, 1315'FWL
8	7371.9	0.00	0.00	7211.0	-648.4	1059.6	0.00	0.00	1242.3	