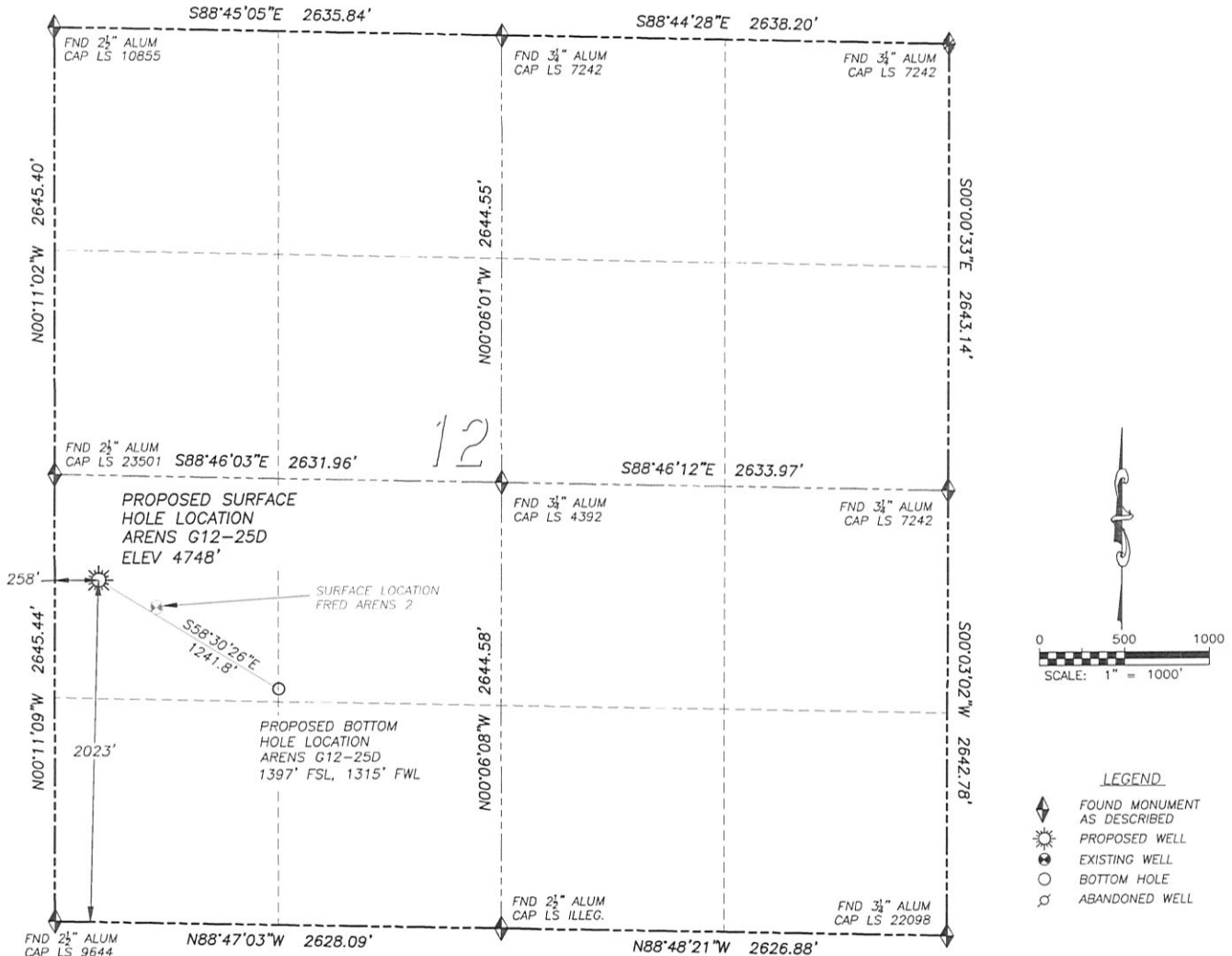


WELL LOCATION CERTIFICATE ARENS G12-25D

SECTION 12, TOWNSHIP 4 NORTH, RANGE 65 WEST OF THE 6TH PRINCIPAL MERIDIAN

**NAD 83 LATITUDE AND LONGITUDE****ARENS G12-25D SURFACE HOLE:**

LATITUDE: N40.32527°
 LONGITUDE: W104.61999°
 ELEVATION: 4748'
 FOOTAGE: 2023' FSL, 258' FWL
 PDOP: 1.7
 QTR/QTR: NW4/SW4
 PROP LINE: 162' NORTHEAST

BOTTOM HOLE:

LATITUDE: N40.32349°
 LONGITUDE: W104.61619°
 FOOTAGE: 1397' FSL, 1315' FWL

NEAREST EXISTING WELL:

FRED ARENS 2 SURFACE HOLE
 LATITUDE: N40.32482°
 LONGITUDE: W104.61877°
 ELEVATION: 4745'
 376' SOUTHEAST

IN ACCORDANCE WITH A REQUEST FROM MIKE RODINE OF NOBLE ENERGY INC., DALEY LAND SURVEYING, INC. HAS DETERMINED THE SURFACE LOCATION OF THE ARENS G12-25D WELL TO BE 2023' FSL, 258' FWL, AS MEASURED AT NINETY (90) DEGREES FROM THE SECTION LINES OF SECTION 12, TOWNSHIP 4 NORTH, RANGE 65 WEST OF THE 6TH PRINCIPAL MERIDIAN, WELD COUNTY, COLORADO. THE BOTTOM HOLE LOCATION, PROVIDED BY THE CLIENT, IS TO BE 1397' FSL, 1315' FWL.

I HEREBY CERTIFY THAT THIS WELL LOCATION CERTIFICATE WAS PREPARED BY ME OR UNDER MY DIRECT SUPERVISION, THAT THE WORK WAS COMPLETED ON 9/01/2011 FOR AND ON BEHALF OF NOBLE ENERGY, INC., AND THAT THIS MAP DOES NOT REPRESENT A BOUNDARY SURVEY, IT IS NOT A LAND SURVEY PLAT OR AN IMPROVEMENT SURVEY PLAT AND IT IS NOT TO BE RELIED UPON FOR THE ESTABLISHMENT OF FENCE, BUILDING OR OTHER FUTURE IMPROVEMENT LINES.

NOTES:

- 1) BEARINGS FOR THIS MAP ARE ASSUMED AND BASED UPON GPS OBSERVATIONS MADE BETWEEN MONUMENTS LOCATED AT THE SOUTHWEST CORNER AND WEST QUARTER CORNER OF SECTION 12, T.4N., R.65W.
- 2) HORIZONTAL DATUM IS NAD83.
- 3) VERTICAL DATUM IS NAVD88 AND ORIGINATES FROM LOCAL C.O.R.S. STATIONS, UTILIZING THE GEOID09 MODEL.
- 4) SEE LOCATION DRAWING FOR VISIBLE IMPROVEMENTS WITHIN 400' OF PROPOSED DISTURBED AREA.
- 5) SURFACE USE: PASTURE.

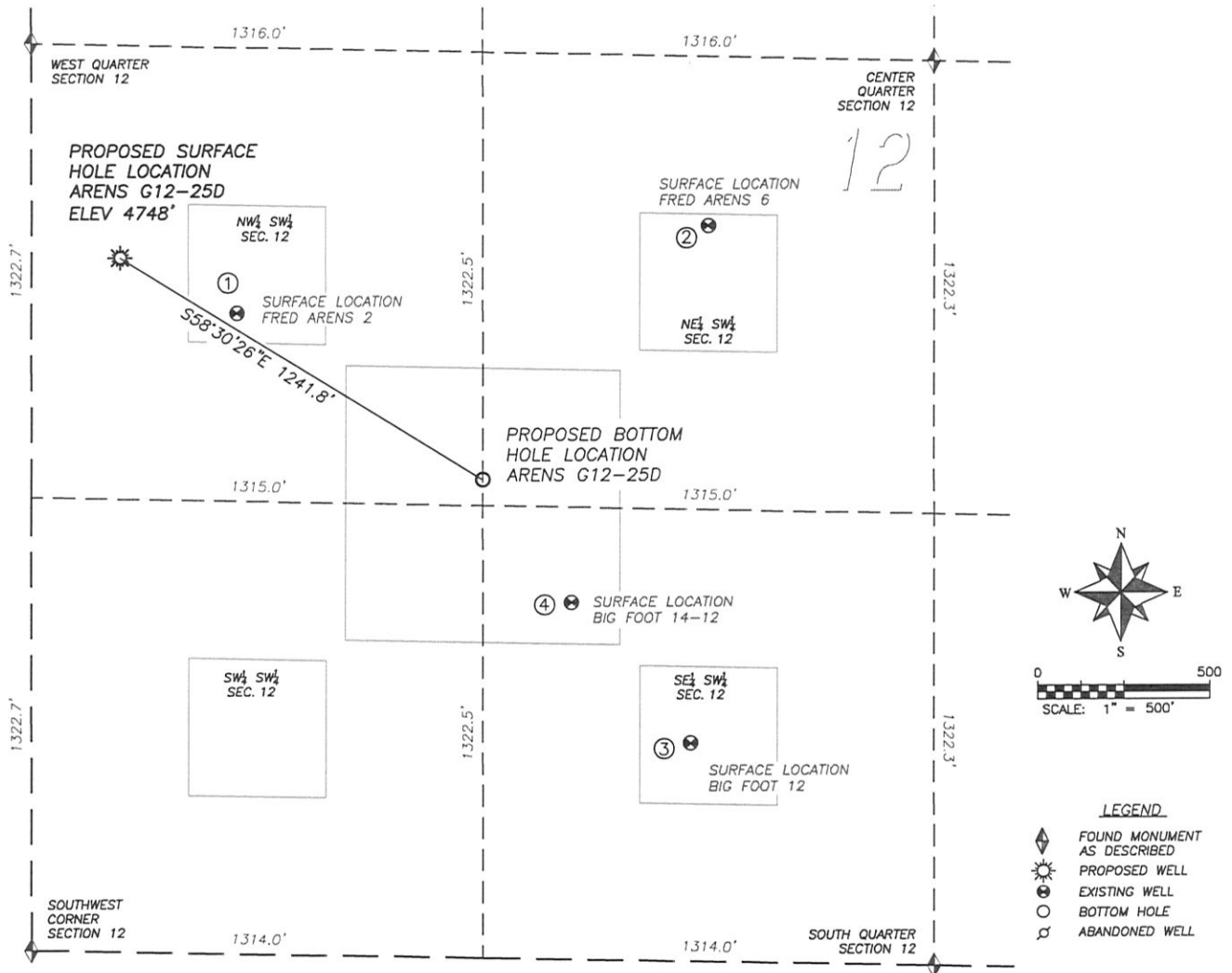
NOTICE: According to Colorado law you MUST commence any legal action based upon any defect in this W.L.C. within three years after you first discover such defect. In no event may any action based upon any such defect in this W.L.C. be commenced more than ten years from the date of the certification shown herein.



FOR AND ON BEHALF OF
 DALEY LAND SURVEYING INC.,
 Robert Daley, PLS 35597

SITE SKETCH ARENS G12-25D

SECTION 12, TOWNSHIP 4 NORTH, RANGE 65 WEST OF THE 6TH PRINCIPAL MERIDIAN



①

FRED ARENS 2

NW/SW SEC. 12
 1869' FSL, 597' FWL
 868' NW OF PROPOSED
 SURFACE HOLE LOCATION
 LAT. N40.32482°
 LONG. W104.61877°
 EL: 4745'
 PDOP 1.9

②

FRED ARENS 6

NE/SW SEC. 12
 2150' FSL, 1972' FWL
 987' NE OF PROPOSED
 SURFACE HOLE LOCATION
 LAT. N40.32552°
 LONG. W104.61384°
 EL: 4777'
 PDOP 2.1

③

BIG FOOT 1-12

SE/SW SEC. 12
 638' FSL, 1921' FWL
 983' SE OF PROPOSED
 SURFACE HOLE LOCATION
 LAT. N40.32137°
 LONG. W104.61401°
 EL: 4753'
 PDOP 2.2

④

BIG FOOT 14-12

SE/SW SEC. 12
 1043' FSL, 1574' FWL
 444' SE OF PROPOSED
 SURFACE HOLE LOCATION
 LAT. N40.32250°
 LONG. W104.61526°
 EL: 4755'
 PDOP 1.9

NOTES:

- THIS DOES NOT REPRESENT A BOUNDARY SURVEY
- HORIZONTAL DATUM IS NAD83
- VERTICAL DATUM IS NAVD88 AND ORIGINATES FROM LOCAL C.O.R.S. STATIONS, UTILIZING THE GEOID09 MODEL.

