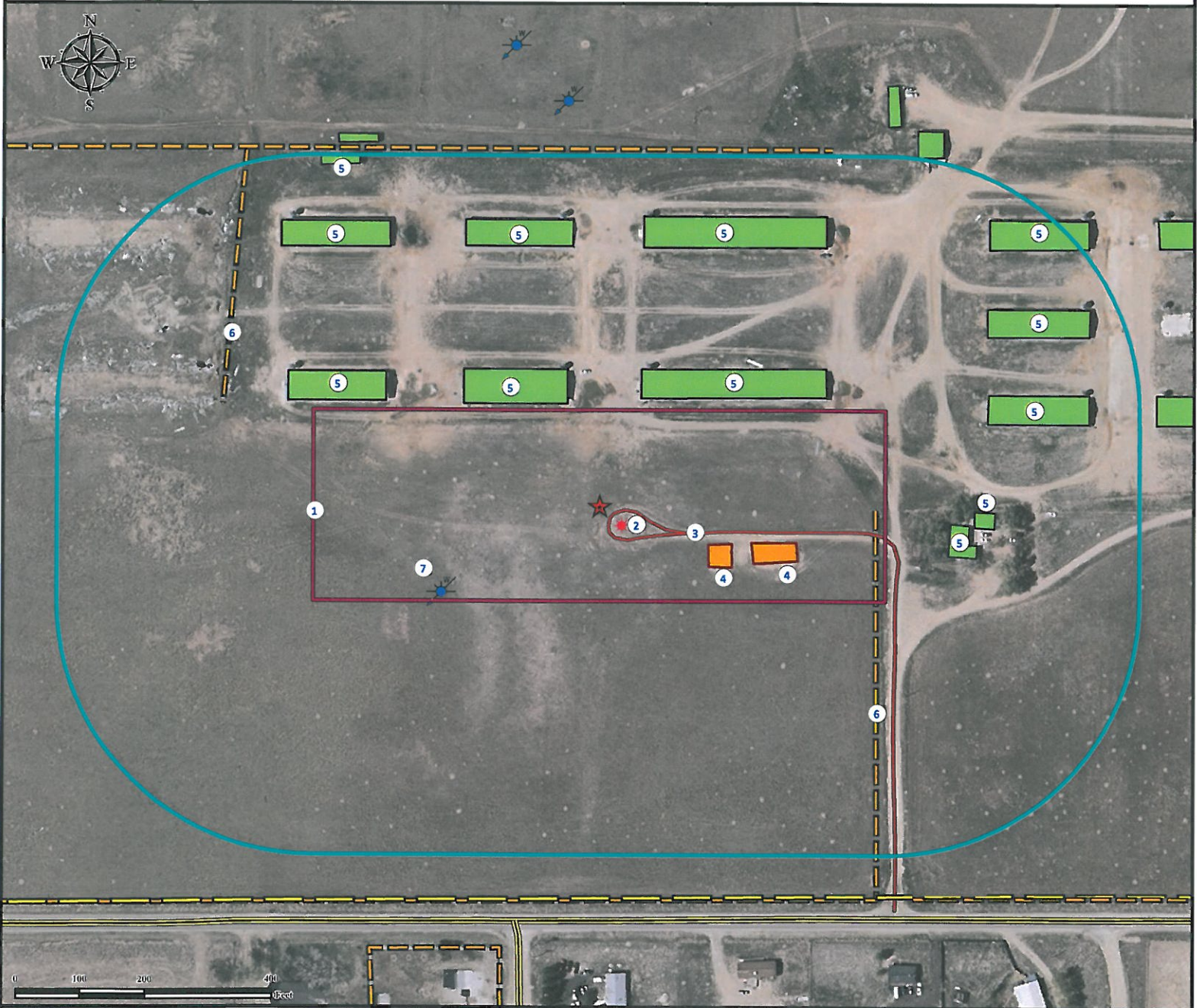


Location Drawing GOBBLER 15S - 27HZ Facility

SE¼ SE¼ SECTION 22, TOWNSHIP 2 NORTH, RANGE 66 WEST OF THE 6TH PRINCIPAL MERIDIAN



- | | |
|--|--|
| <p>1. Proposed GOBBLER 15S-27HZ Facility.</p> <p>2. Existing well WARREN FARMS INC "B" #2 is ±46' SE. ±412' NE, ±523' NW, ±554' W, ±590' W, ±624' NE, ±655' NW, ±665' NE, and ±734' NE.</p> <p>3. Private Road is ±24' SE.</p> <p>4. Facilities are ±182' SE and ±246' SE.</p> | <p>5. Buildings are ±168' NW, ±181' NE, ±373' NW, 411' NW,</p> <p>6. Fences are ±434' E and ±614' NW.</p> <p>7. Water Well (#52840) is ±283' SW. (Permit canceled, feature not in this location per field verify.)</p> |
|--|--|

<p>Legend</p> <ul style="list-style-type: none"> ★ Reference Point ★ Existing Well ★ Water Well Building/Residence Proposed Facility 400' Radius Facilities Enclosure Power Line Private Road Fence Public Road 	<p style="text-align: center;">Reference Location</p> <p style="text-align: center;">** All Measurements are Made from ★ Reference Point **</p> <p style="text-align: center;">Lat: 40.118244° Long:-104.758589° (NAD83) Elevation: 5062 Feet FSL: 655' FEL:1286'</p>	<p>Prepared for: Anadarko Petroleum Corporation</p> <p>KERR-MCGEE OIL & GAS ONSHORE LP</p>
<p>PFS Petroleum Field Services</p> <p style="text-align: center;"><i>Use our resources to find yours!</i> www.petro-fs.com (303) 928-7128</p>	<p>Field Date: 09/28/2011 Drafting Date: 10/12/2011 Drafted by: HMB Checked By: BHF</p>	<p>Surface Use: Rangeland</p> <p>Data Sources: - Aerial courtesy of NAIP (2009)</p>