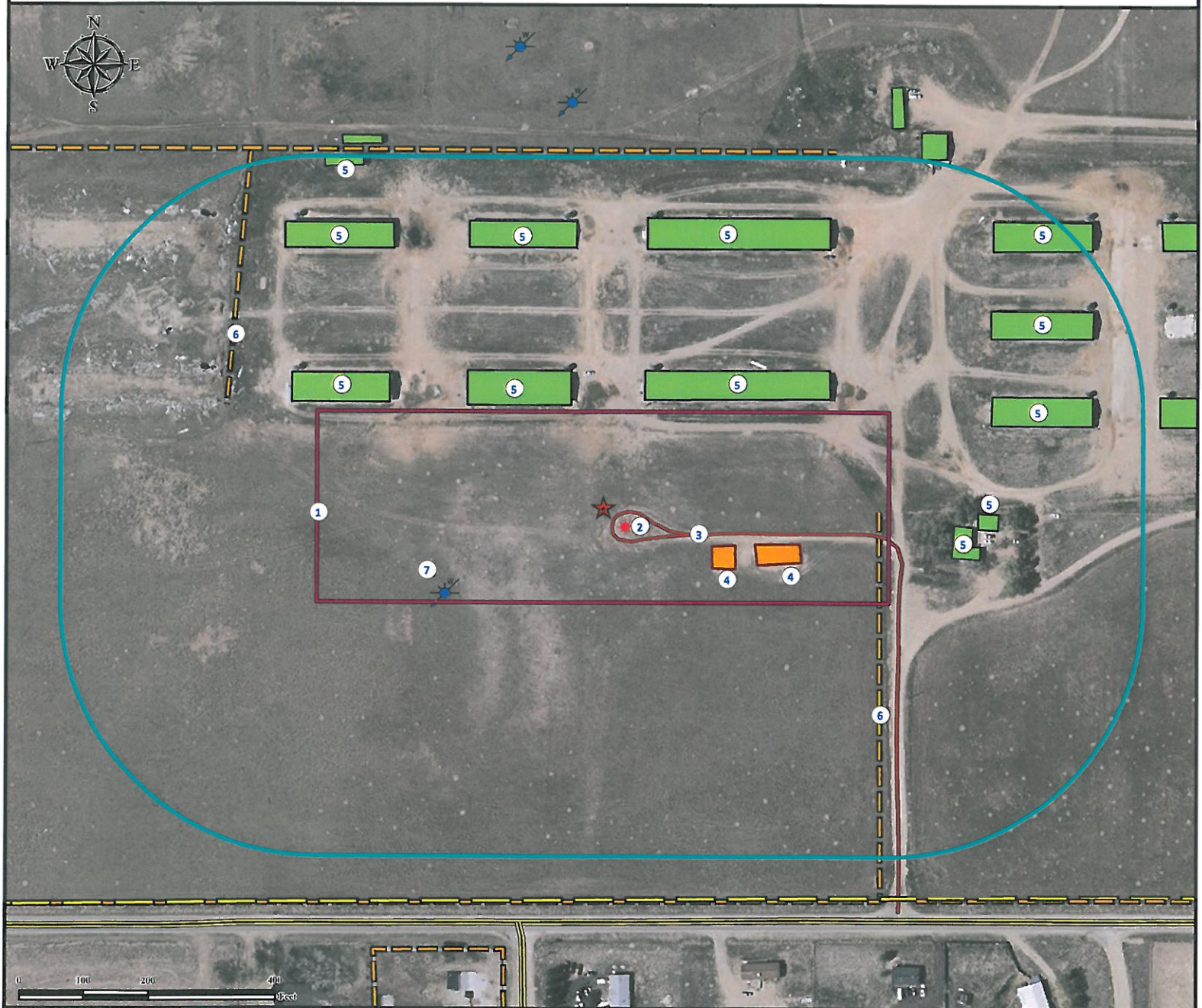


Location Drawing

GOBBLER 15S-27HZ Facility

ACCESS ROAD

SE¼ SE¼ SECTION 22, TOWNSHIP 2 NORTH, RANGE 66 WEST OF THE 6TH PRINCIPAL MERIDIAN



- | | |
|--|--|
| <p>1. Proposed GOBBLER 15S-27HZ Facility.</p> <p>2. Existing well WARREN FARMS INC "B" #2 is ±46' SE. ±412' NE, ±523' NW, ±554' W, ±590' W, ±624' NE, ±655' NW, ±665' NE, and ±734' NE.</p> <p>3. Private Road is ±24' SE.</p> <p>4. Facilities are ±182' SE and ±246' SE.</p> | <p>5. Buildings are ±168' NW, ±181' NE, ±373' NW, 411' NW,</p> <p>6. Fences are ±434' E and ±614' NW.</p> <p>7. Water Well (#52840) is ±283' SW. (Permit canceled, feature not in this location per field verify.)</p> |
|--|--|

Legend

- | | | |
|-------------------|------------------------|----------------|
| ★ Reference Point | ■ Building/Residence | — Power Line |
| ★ Existing Well | □ Proposed Facility | — Private Road |
| ⚡ Water Well | ○ 400' Radius | — Fence |
| | ■ Facilities Enclosure | — Public Road |

Reference Location

** All Measurements are Made from
 ★ Reference Point **
 Lat: 40.118244° Long: -104.758589° (NAD83)
 Elevation: 5062 Feet
 FSL: 655' FEL: 1286'



Use our resources to find yours!
www.petro-fs.com
 (303) 928-7128

Field Date: 09/28/2011
 Drafting Date: 10/12/2011
 Drafter: HMB
 Checked By: BHF

Surface Use: Rangeland
 Data Sources:
 - Aerial courtesy of NAIP (2009)

Prepared for:



KERR-MCGEE OIL & GAS ONSHORE LP