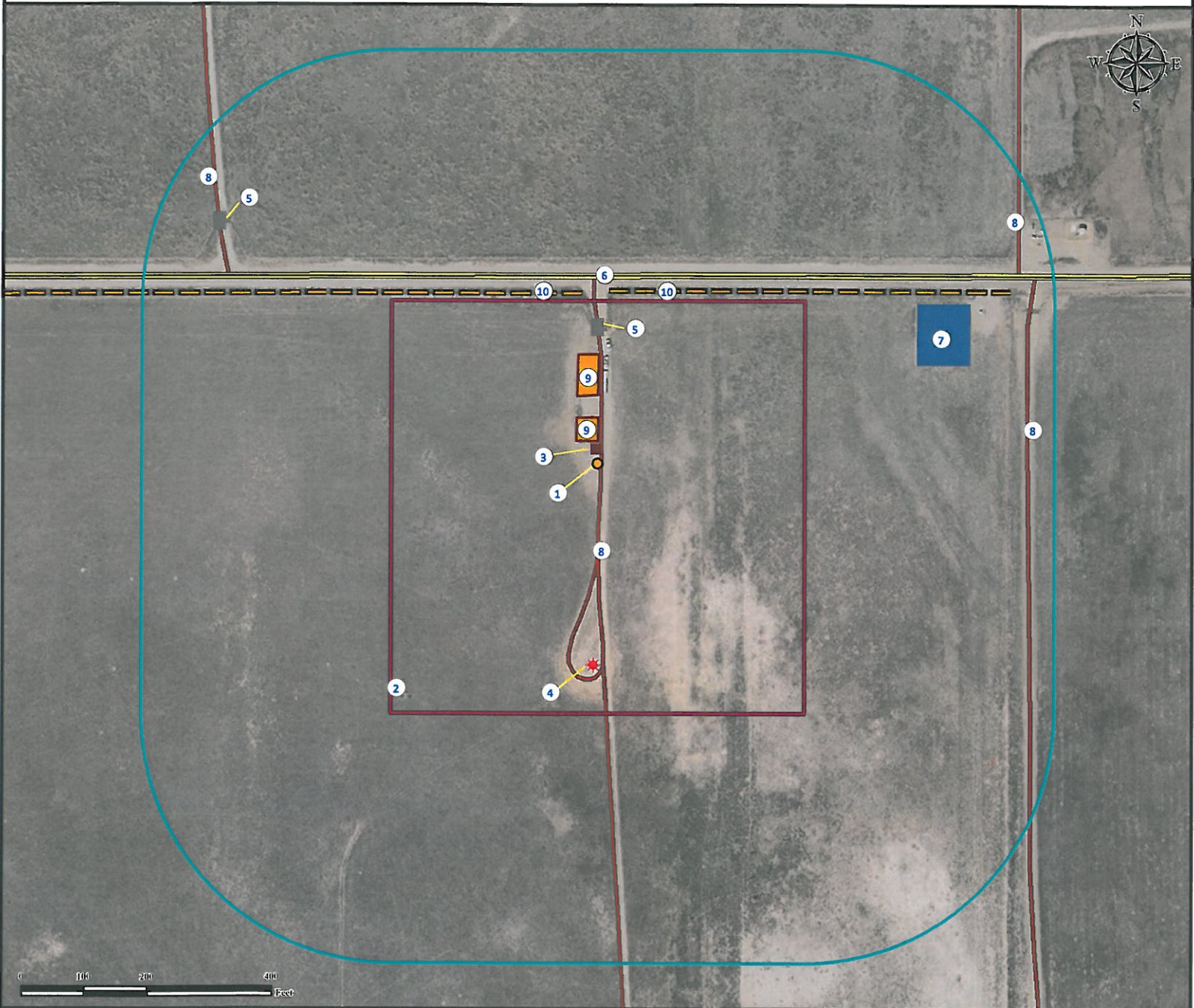


Location Drawing GOBBLER 16N-27HZ

Horizontal Well Pad

NE¼ NE¼ SECTION 22, TOWNSHIP 2 NORTH, RANGE 66 WEST OF THE 6TH PRINCIPAL MERIDIAN



- | | |
|--|---|
| <ul style="list-style-type: none"> 1. Proposed well GOBBLER 16N-27HZ. 2. Operational Disturbance Area. 3. Emissions Control Device is ±23' N. (To Be Removed) 4. Existing well WARREN FARMS INC "B" #1 is ±319' S. 5. Cattle guards are ±219' N and ±719' NW. | <ul style="list-style-type: none"> 6. County Road 20 is ±300' N. 7. Oil and gas equipment is ±534' NE. 8. Private roads are ±10' E, ±662' NW, ±687' E and ±738' NE. 9. Facilities are ±35' N and ±109' N. (To Be Removed) 10. Fences are ±292' N and ±395' NE. |
|--|---|

Legend

- | | | | |
|---------------|------------------|----------------------|--------------|
| Proposed Well | O&G Equipment | Facilities Enclosure | Cattle Guard |
| Existing Well | Disturbance Area | Private Road | Fence |
| ECD | 400' Radius | Public Road | |

Reference Location

** All Measurements are Made from Reference Well GOBBLER 16N-27HZ **
 Lat: 40.130084° Long: -104.756255° (NAD83)
 Elevation: 5077 Feet

Surface Use: Rangeland



Use our resources to find yours!
www.petro-fs.com
 (303) 928-7128

Field Date: 09/28/2011
 Drafting Date: 10/12/2011
 Drafter: DMM
 Checked By: BHF

Data Sources:
 - Aerial courtesy of NAIP (2009)

Prepared for:



KERR-MCGEE OIL & GAS ONSHORE LP