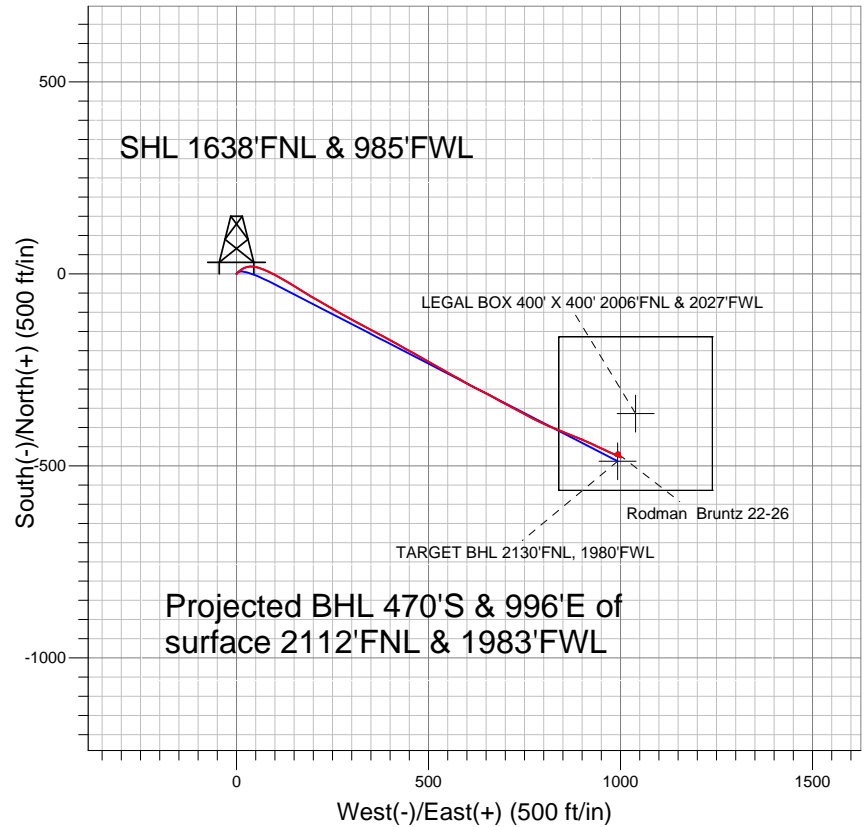
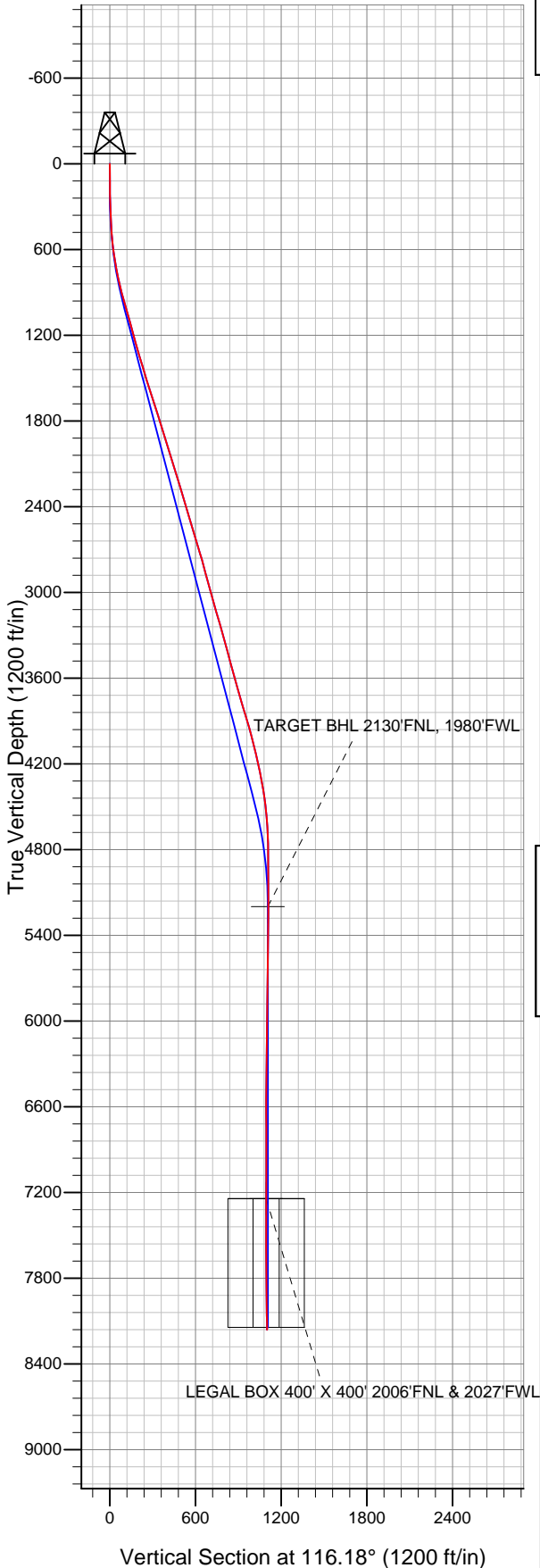


EnCana Oil & Gas Weld County CO



LEGEND

- △ Rodman Bruntz 22-26, Wellbore #1, Plan #1 (7-20-11) V0
- Wellbore #1
- Survey #1

Final Survey Plot

Projected Final Survey -
8312'MD & 8161'TVD @ 1101'VS
1.1 deg Inc 102.7 deg AZ

Project: SEC.26-T2N-R66W
Site: Rodman Bruntz 22-26 Pad Sec.26-T2N-R66W
Well: Rodman Bruntz 22-26
Plan: Wellbore #1



Directional

EnCana Oil & Gas Weld County CO

SEC.26-T2N-R66W

Rodman Bruntz 22-26 Pad Sec.26-T2N-R66W

Rodman Bruntz 22-26

Wellbore #1

Survey: Survey #1

Standard Survey Report

06 September, 2011

Company:	EnCana Oil & Gas Weld County CO	Local Co-ordinate Reference:	Well Rodman Bruntz 22-26
Project:	SEC.26-T2N-R66W	TVD Reference:	WELL @ 5088.0ft (Original Well Elev)
Site:	Rodman Bruntz 22-26 Pad Sec.26-T2N-R66W	MD Reference:	WELL @ 5088.0ft (Original Well Elev)
Well:	Rodman Bruntz 22-26	North Reference:	True
Wellbore:	Wellbore #1	Survey Calculation Method:	Minimum Curvature
Design:	Wellbore #1	Database:	Landmark

Project	SEC.26-T2N-R66W, Weld County, Colorado		
Map System:	US State Plane 1983	System Datum:	Mean Sea Level
Geo Datum:	North American Datum 1983		Using Well Reference Point
Map Zone:	Colorado Northern Zone		Using geodetic scale factor

Site	Rodman Bruntz 22-26 Pad Sec.26-T2N-R66W				
Site Position:		Northing:	1,284,520.67 ft	Latitude:	40.111970
From:	Lat/Long	Easting:	3,209,619.48 ft	Longitude:	-104.750530
Position Uncertainty:	0.0 ft	Slot Radius:	"	Grid Convergence:	0.48 °

Well	Rodman Bruntz 22-26					
Well Position	+N/-S	0.0 ft	Northing:	1,284,520.66 ft	Latitude:	40.111970
	+E/-W	0.0 ft	Easting:	3,209,619.48 ft	Longitude:	-104.750530
Position Uncertainty		0.0 ft	Wellhead Elevation:	ft	Ground Level:	5,075.0 ft

Wellbore	Wellbore #1				
Magnetics	Model Name	Sample Date	Declination (°)	Dip Angle (°)	Field Strength (nT)
	IGRF2010	7/18/2011	8.82	66.82	52,970

Design	Wellbore #1				
Audit Notes:					
Version:	1.0	Phase:	ACTUAL	Tie On Depth:	0.0
Vertical Section:	Depth From (TVD) (ft)	+N/-S (ft)	+E/-W (ft)	Direction (°)	
	0.0	0.0	0.0	116.18	

Survey Program	Date	9/6/2011			
From (ft)	To (ft)	Survey (Wellbore)	Tool Name	Description	
123.0	8,312.0	Survey #1 (Wellbore #1)	MWD	MWD - Standard	

Survey										
Measured Depth (ft)	Inclination (°)	Azimuth (°)	Vertical Depth (ft)	+N/-S (ft)	+E/-W (ft)	Vertical Section (ft)	Dogleg Rate (°/100ft)	Build Rate (°/100ft)	Turn Rate (°/100ft)	
0.0	0.00	0.00	0.0	0.0	0.0	0.0	0.00	0.00	0.00	
123.0	0.60	86.50	123.0	0.0	0.6	0.6	0.49	0.49	0.00	
182.0	1.80	44.50	182.0	0.7	1.6	1.1	2.39	2.03	-71.19	
300.0	4.90	45.00	299.8	5.6	6.5	3.3	2.63	2.63	0.42	
362.0	5.30	49.80	361.5	9.3	10.5	5.3	0.94	0.65	7.74	
454.0	5.80	63.50	453.1	14.1	17.9	9.9	1.53	0.54	14.89	
545.0	7.80	75.60	543.5	17.7	28.0	17.3	2.69	2.20	13.30	
637.0	8.90	92.30	634.5	19.0	41.2	28.6	2.88	1.20	18.15	
729.0	10.50	107.40	725.2	16.2	56.3	43.4	3.25	1.74	16.41	
822.0	13.10	112.00	816.2	9.7	74.2	62.3	2.97	2.80	4.95	
916.0	14.00	117.30	907.6	0.5	94.1	84.3	1.63	0.96	5.64	
1,009.0	16.30	119.90	997.4	-11.2	115.5	108.5	2.58	2.47	2.80	
1,096.0	15.90	120.40	1,081.0	-23.3	136.3	132.6	0.49	-0.46	0.57	

Company:	EnCana Oil & Gas Weld County CO	Local Co-ordinate Reference:	Well Rodman Bruntz 22-26
Project:	SEC.26-T2N-R66W	TVD Reference:	WELL @ 5088.0ft (Original Well Elev)
Site:	Rodman Bruntz 22-26 Pad Sec.26-T2N-R66W	MD Reference:	WELL @ 5088.0ft (Original Well Elev)
Well:	Rodman Bruntz 22-26	North Reference:	True
Wellbore:	Wellbore #1	Survey Calculation Method:	Minimum Curvature
Design:	Wellbore #1	Database:	Landmark

Survey										
Measured Depth (ft)	Inclination (°)	Azimuth (°)	Vertical Depth (ft)	+N/-S (ft)	+E/-W (ft)	Vertical Section (ft)	Dogleg Rate (°/100ft)	Build Rate (°/100ft)	Turn Rate (°/100ft)	
1,177.0	15.10	122.00	1,159.0	-34.5	154.8	154.2	1.12	-0.99	1.98	
1,270.0	15.50	121.30	1,248.7	-47.3	175.7	178.6	0.47	0.43	-0.75	
1,364.0	17.10	120.30	1,338.9	-60.8	198.4	204.9	1.73	1.70	-1.06	
1,458.0	16.80	120.60	1,428.8	-74.7	222.0	232.2	0.33	-0.32	0.32	
1,551.0	17.40	119.70	1,517.7	-88.5	245.7	259.5	0.71	0.65	-0.97	
1,645.0	17.00	118.20	1,607.5	-101.9	270.0	287.3	0.64	-0.43	-1.60	
1,738.0	17.90	120.60	1,696.3	-115.6	294.3	315.1	1.24	0.97	2.58	
1,832.0	18.00	118.20	1,785.7	-129.8	319.5	344.0	0.79	0.11	-2.55	
1,926.0	17.90	117.30	1,875.1	-143.3	345.1	373.0	0.31	-0.11	-0.96	
2,019.0	17.20	117.80	1,963.8	-156.3	370.0	401.0	0.77	-0.75	0.54	
2,113.0	16.70	118.90	2,053.7	-169.3	394.1	428.4	0.63	-0.53	1.17	
2,207.0	17.20	119.70	2,143.6	-182.7	418.0	455.8	0.59	0.53	0.85	
2,300.0	16.60	118.50	2,232.6	-195.9	441.6	482.8	0.75	-0.65	-1.29	
2,394.0	16.80	118.70	2,322.6	-208.8	465.4	509.7	0.22	0.21	0.21	
2,488.0	16.80	120.40	2,412.6	-222.2	489.0	536.9	0.52	0.00	1.81	
2,581.0	16.60	119.90	2,501.7	-235.6	512.1	563.5	0.26	-0.22	-0.54	
2,675.0	17.10	119.90	2,591.7	-249.2	535.7	590.7	0.53	0.53	0.00	
2,769.0	16.80	118.20	2,681.6	-262.5	559.7	618.1	0.62	-0.32	-1.81	
2,862.0	15.70	119.20	2,770.9	-275.0	582.5	644.1	1.22	-1.18	1.08	
2,956.0	14.90	122.00	2,861.5	-287.6	603.9	668.8	1.16	-0.85	2.98	
3,050.0	15.40	114.30	2,952.3	-299.2	625.5	693.3	2.20	0.53	-8.19	
3,143.0	15.80	116.20	3,041.8	-309.8	648.1	718.3	0.70	0.43	2.04	
3,237.0	16.50	121.30	3,132.1	-322.4	671.0	744.4	1.68	0.74	5.43	
3,331.0	15.70	115.90	3,222.5	-334.9	693.8	770.4	1.81	-0.85	-5.74	
3,424.0	15.50	118.90	3,312.0	-346.4	716.0	795.4	0.89	-0.22	3.23	
3,518.0	15.30	119.70	3,402.7	-358.6	737.8	820.3	0.31	-0.21	0.85	
3,612.0	15.00	118.00	3,493.4	-370.5	759.3	844.9	0.57	-0.32	-1.81	
3,705.0	15.80	114.60	3,583.1	-381.4	781.4	869.6	1.30	0.86	-3.66	
3,799.0	15.40	115.70	3,673.6	-392.1	804.3	894.8	0.53	-0.43	1.17	
3,893.0	16.10	111.30	3,764.1	-402.3	827.7	920.3	1.47	0.74	-4.68	
3,986.0	17.70	112.20	3,853.0	-412.3	852.8	947.2	1.74	1.72	0.97	
4,080.0	15.70	112.20	3,943.1	-422.5	877.8	974.2	2.13	-2.13	0.00	
4,174.0	14.60	112.90	4,033.8	-431.9	900.5	998.7	1.19	-1.17	0.74	
4,267.0	12.80	114.30	4,124.2	-440.7	920.7	1,020.7	1.97	-1.94	1.51	
4,361.0	12.80	114.60	4,215.8	-449.4	939.7	1,041.5	0.07	0.00	0.32	
4,455.0	11.00	115.50	4,307.8	-457.6	957.2	1,060.9	1.92	-1.91	0.96	
4,548.0	8.70	114.80	4,399.4	-464.3	971.6	1,076.8	2.48	-2.47	-0.75	
4,642.0	6.90	114.80	4,492.5	-469.7	983.2	1,089.6	1.91	-1.91	0.00	
4,736.0	4.70	116.20	4,586.1	-473.7	991.8	1,099.1	2.35	-2.34	1.49	
4,829.0	2.30	108.80	4,678.9	-476.0	997.0	1,104.7	2.62	-2.58	-7.96	
4,923.0	1.40	81.80	4,772.8	-476.5	999.9	1,107.5	1.31	-0.96	-28.72	
5,017.0	0.40	128.00	4,866.8	-476.5	1,001.3	1,108.8	1.23	-1.06	49.15	
5,110.0	0.40	181.40	4,959.8	-477.0	1,001.5	1,109.3	0.39	0.00	57.42	
5,204.0	0.30	158.90	5,053.8	-477.6	1,001.6	1,109.6	0.18	-0.11	-23.94	
5,298.0	0.20	226.80	5,147.8	-477.9	1,001.6	1,109.7	0.31	-0.11	72.23	
5,350.2	0.22	305.83	5,200.0	-477.9	1,001.4	1,109.6	0.52	0.05	151.42	
TARGET BHL 2130'FNL, 1980'FWL										
5,391.0	0.40	328.40	5,240.8	-477.8	1,001.3	1,109.4	0.52	0.43	55.30	
5,485.0	0.60	329.30	5,334.8	-477.1	1,000.9	1,108.7	0.21	0.21	0.96	
5,579.0	1.00	331.70	5,428.8	-475.9	1,000.2	1,107.6	0.43	0.43	2.55	
5,672.0	1.00	349.30	5,521.8	-474.4	999.7	1,106.5	0.33	0.00	18.92	
5,766.0	1.10	348.10	5,615.8	-472.7	999.4	1,105.4	0.11	0.11	-1.28	
5,860.0	1.10	347.60	5,709.8	-471.0	999.0	1,104.3	0.01	0.00	-0.53	
5,953.0	1.10	350.70	5,802.7	-469.2	998.7	1,103.2	0.06	0.00	3.33	

Company:	EnCana Oil & Gas Weld County CO	Local Co-ordinate Reference:	Well Rodman Bruntz 22-26
Project:	SEC.26-T2N-R66W	TVD Reference:	WELL @ 5088.0ft (Original Well Elev)
Site:	Rodman Bruntz 22-26 Pad Sec.26-T2N-R66W	MD Reference:	WELL @ 5088.0ft (Original Well Elev)
Well:	Rodman Bruntz 22-26	North Reference:	True
Wellbore:	Wellbore #1	Survey Calculation Method:	Minimum Curvature
Design:	Wellbore #1	Database:	Landmark

Survey

Measured Depth (ft)	Inclination (°)	Azimuth (°)	Vertical Depth (ft)	+N/-S (ft)	+E/-W (ft)	Vertical Section (ft)	Dogleg Rate (°/100ft)	Build Rate (°/100ft)	Turn Rate (°/100ft)
6,047.0	0.90	341.70	5,896.7	-467.6	998.3	1,102.2	0.27	-0.21	-9.57
6,141.0	0.80	333.80	5,990.7	-466.3	997.8	1,101.1	0.16	-0.11	-8.40
6,234.0	0.80	297.60	6,083.7	-465.4	996.9	1,100.0	0.53	0.00	-38.92
6,328.0	1.00	274.20	6,177.7	-465.1	995.5	1,098.6	0.44	0.21	-24.89
6,423.0	1.10	277.40	6,272.7	-464.9	993.8	1,096.9	0.12	0.11	3.37
6,517.0	1.10	259.70	6,366.7	-464.9	992.0	1,095.3	0.36	0.00	-18.83
6,611.0	1.20	212.90	6,460.6	-465.9	990.6	1,094.5	0.98	0.11	-49.79
6,705.0	1.60	203.60	6,554.6	-468.0	989.5	1,094.4	0.49	0.43	-9.89
6,800.0	1.80	211.80	6,649.6	-470.4	988.2	1,094.4	0.33	0.21	8.63
6,894.0	1.40	173.90	6,743.5	-472.8	987.5	1,094.8	1.18	-0.43	-40.32
6,988.0	0.90	75.30	6,837.5	-473.8	988.4	1,096.0	1.89	-0.53	-104.89
7,083.0	0.90	16.20	6,932.5	-472.9	989.3	1,096.4	0.93	0.00	-62.21
7,177.0	0.70	330.90	7,026.5	-471.7	989.2	1,095.8	0.68	-0.21	-48.19
7,271.0	0.90	295.00	7,120.5	-470.9	988.3	1,094.6	0.56	0.21	-38.19
7,365.0	0.30	289.70	7,214.5	-470.5	987.4	1,093.6	0.64	-0.64	-5.64
7,393.8	0.13	322.67	7,243.3	-470.4	987.3	1,093.5	0.70	-0.58	114.65
LEGAL BOX 400' X 400' 2006'FNL & 2027'FWL									
7,460.0	0.40	72.60	7,309.5	-470.3	987.4	1,093.6	0.70	0.40	165.95
7,554.0	0.40	27.80	7,403.5	-469.9	987.9	1,093.9	0.32	0.00	-47.66
7,648.0	0.50	43.40	7,497.5	-469.3	988.4	1,094.0	0.17	0.11	16.60
7,743.0	0.40	57.90	7,592.5	-468.8	988.9	1,094.3	0.16	-0.11	15.26
7,837.0	0.70	77.20	7,686.5	-468.5	989.8	1,094.9	0.37	0.32	20.53
7,931.0	0.70	97.80	7,780.5	-468.5	990.9	1,095.9	0.27	0.00	21.91
8,025.0	0.50	123.80	7,874.5	-468.8	991.8	1,096.9	0.35	-0.21	27.66
8,120.0	0.50	114.50	7,969.5	-469.2	992.5	1,097.7	0.09	0.00	-9.79
8,214.0	1.10	97.80	8,063.5	-469.5	993.8	1,099.0	0.68	0.64	-17.77
8,267.0	1.10	102.70	8,116.4	-469.7	994.8	1,099.9	0.18	0.00	9.25
8,312.0	1.10	102.70	8,161.4	-469.8	995.6	1,100.8	0.00	0.00	0.00

Checked By: _____ Approved By: _____ Date: _____