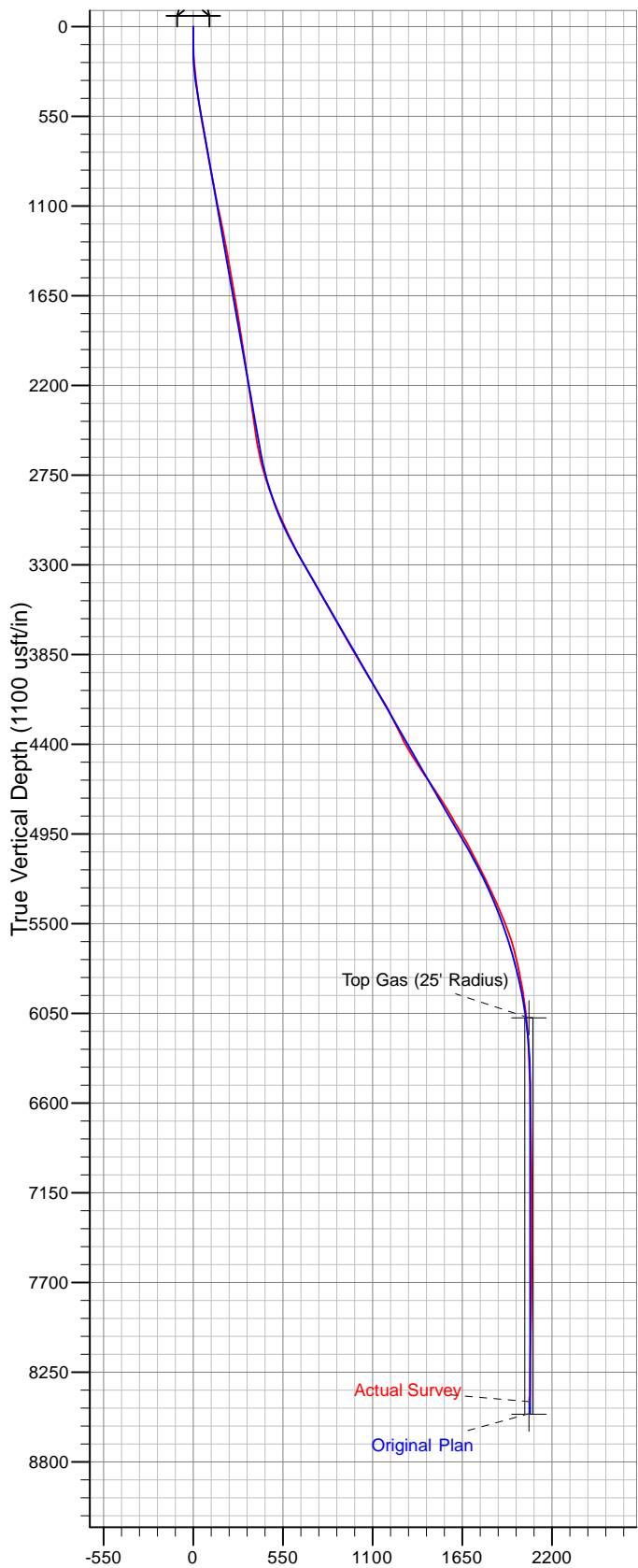
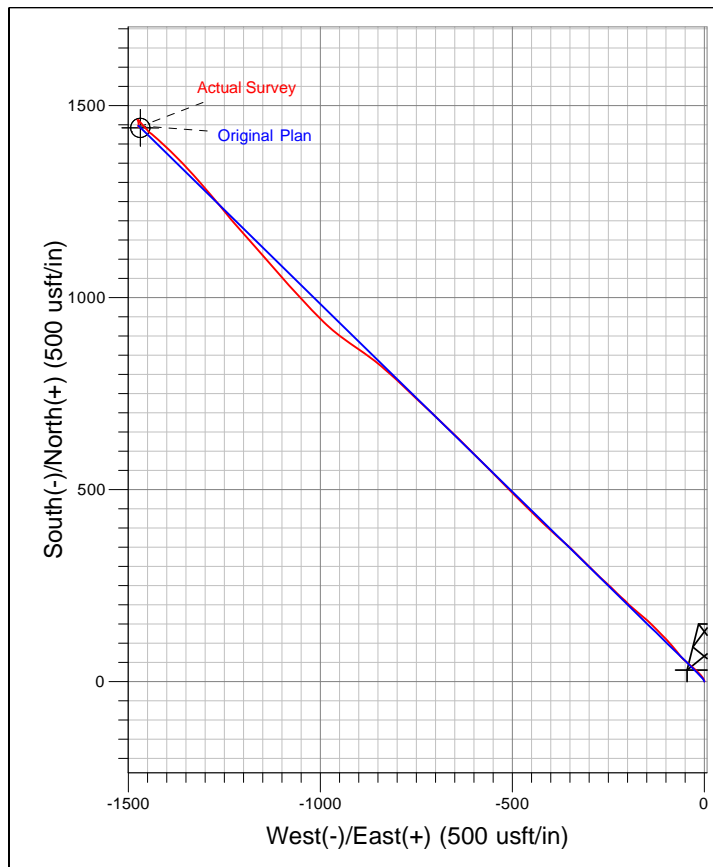




Well Name: RWF 431-17  
 Surface Location: RMV 53-17 Pad  
 NAD 1927 (NADCON CONUS) , US State Plane 1927 (Exact solution) Colorado Central 502  
 Ground Elevation: 5816.0  
 +N/-S +E/-W Northing Easting Latitude Longitude Slot  
 0.0 0.0 625576.30 1321929.00 39° 31' 35.007 N 107° 54' 14.598 W A10  
 KB @ 5839.0usft ((Cy 14 RKB @ 23') tf)



Vertical Section at 314.47° (1100 usft/in)



Azimuths to True North  
 Magnetic North: 10.56°  
 Magnetic Field  
 Strength: 52511.8snT  
 Dip Angle: 65.85°  
 Date: 6/1/2009  
 Model: IGRF2005-10