
WILLIAMS PRODUCTION RMT INC EBUSINE

**RWF 431-17
PICEANCE
Garfield County , Colorado**

Cement Surface Casing
13-Jun-2009

Post Job Report

The Road to Excellence Starts with Safety

Sold To #: 300721	Ship To #: 2729267	Quote #:	Sales Order #: 6725156
Customer: WILLIAMS PRODUCTION RMT INC EBUSINE	Customer Rep: TURNER, JOHN		
Well Name: RWF	Well #: 431-17	API/UWI #:	
Field: PICEANCE	City (SAP): RIFLE	County/Parish: Garfield	State: Colorado
Contractor: CYCLONE 14	Rig/Platform Name/Num: CYCLONE 14		
Job Purpose: Cement Surface Casing			
Well Type: Development Well	Job Type: Cement Surface Casing		
Sales Person: KOHL, KYLE	Srv Supervisor: CALDWELL, JEFFREY	MBU ID Emp #: 369111	

Job Personnel

HES Emp Name	Exp Hrs	Emp #	HES Emp Name	Exp Hrs	Emp #	HES Emp Name	Exp Hrs	Emp #
ARNOLD, EDWARD John	5.5	439784	CALDWELL, JEFFREY S	5.5	369111	DUBON, TODD N	5.5	443351
LANE, R Michael	5.5	445002	SCOTT, DALLAS D	5.5	334750			

Equipment

HES Unit #	Distance-1 way	HES Unit #	Distance-1 way	HES Unit #	Distance-1 way	HES Unit #	Distance-1 way
10296152C	60 mile	10744549	60 mile	10804487	60 mile	10897797	60 mile
10951248	60 mile						

Job Hours

Date	On Location Hours	Operating Hours	Date	On Location Hours	Operating Hours	Date	On Location Hours	Operating Hours
06/13/09	5.5	1						
TOTAL	Total is the sum of each column separately							

Job

Formation Name	Formation Depth (MD)	Top	Bottom	Form Type	Job depth MD	Job Depth TVD	Water Depth	Perforation Depth (MD)	From	To	Deparated Loc
				BHST	1155. ft	1155. ft	5. ft				

Well Data

Description	New / Used	Max pressure psig	Size in	ID in	Weight lbm/ft	Thread	Grade	Top MD ft	Bottom MD ft	Top TVD ft	Bottom TVD ft
-------------	------------	-------------------	---------	-------	---------------	--------	-------	-----------	--------------	------------	---------------

Sales/Rental/3rd Party (HES)

Description	Qty	Qty uom	Depth	Supplier
PLUG,CMTG,TOP,9 5/8,HWE,8.16 MIN/9.06 MA	1	EA		
PORT. DAS W/CEMWIN;ACQUIRE W/HES, ZI	1	JOB		
ADC (AUTO DENSITY CTRL) SYS, /JOB,ZI	1	JOB		

Tools and Accessories

Type	Size	Qty	Make	Depth	Type	Size	Qty	Make	Depth	Type	Size	Qty	Make
Guide Shoe					Packer					Top Plug	9.625	1	
Float Shoe					Bridge Plug					Bottom Plug			
Float Collar					Retainer					SSR plug set			
Insert Float										Plug Container	9.625	1	
Stage Tool										Centralizers			

Miscellaneous Materials

Gelling Agt	Conc	Surfactant	Conc	Acid Type	Qty	Conc	%
Treatment Fld	Conc	Inhibitor	Conc	Sand Type	Size	Qty	

Fluid Data									
Stage/Plug #: 1									
Fluid #	Stage Type	Fluid Name	Qty	Qty uom	Mixing Density lbm/gal	Yield ft3/sk	Mix Fluid Gal/sk	Rate bbl/min	Total Mix Fluid Gal/sk
1	Water Spacer		20	bbl	8.4	.0	.0	5.0	
2	Lead Cement	VERSACEM (TM) SYSTEM (452010)	160	sacks	12.3	2.38	13.75	7.5	
		CAL-SEAL 60, 50 LB BAG (101217146)							
		ECONOLITE (100001580)							
		VERSASET, 55 LB SK (101376573)							
		SALT, 100 LB BAG (100003652)							
		POLY-E-FLAKE (101216940)							
		D-AIR 3000 (101007446)							
		FRESH WATER							
3	Tail Cement	VERSACEM (TM) SYSTEM (452010)	160	sacks	12.8	2.11	11.75	7.5	
		CAL-SEAL 60, 50 LB BAG (101217146)							
		ECONOLITE (100001580)							
		VERSASET, 55 LB SK (101376573)							
		SALT, 100 LB BAG (100003652)							
		FRESH WATER							
4	Displacement Fluid		84	bbl	8.4	.0	.0	10.0	
Calculated Values		Pressures		Volumes					
Displacement	86.1	Shut In: Instant		Lost Returns	0	Cement Slurry	120	Pad	
Top Of Cement	SURFACE	5 Min		Cement Returns	20	Actual Displacement	84	Treatment	
Frac Gradient		15 Min		Spacers	20	Load and Breakdown		Total Job	224
Rates									
Circulating	RIG	Mixing	7.5	Displacement	10	Avg. Job	8		
Cement Left In Pipe	Amount	41..4 ft	Reason	Shoe Joint					
Frac Ring # 1 @	ID	Frac ring # 2 @	ID	Frac Ring # 3 @	ID	Frac Ring # 4 @	ID		
The Information Stated Herein Is Correct				Customer Representative Signature					

The Road to Excellence Starts with Safety

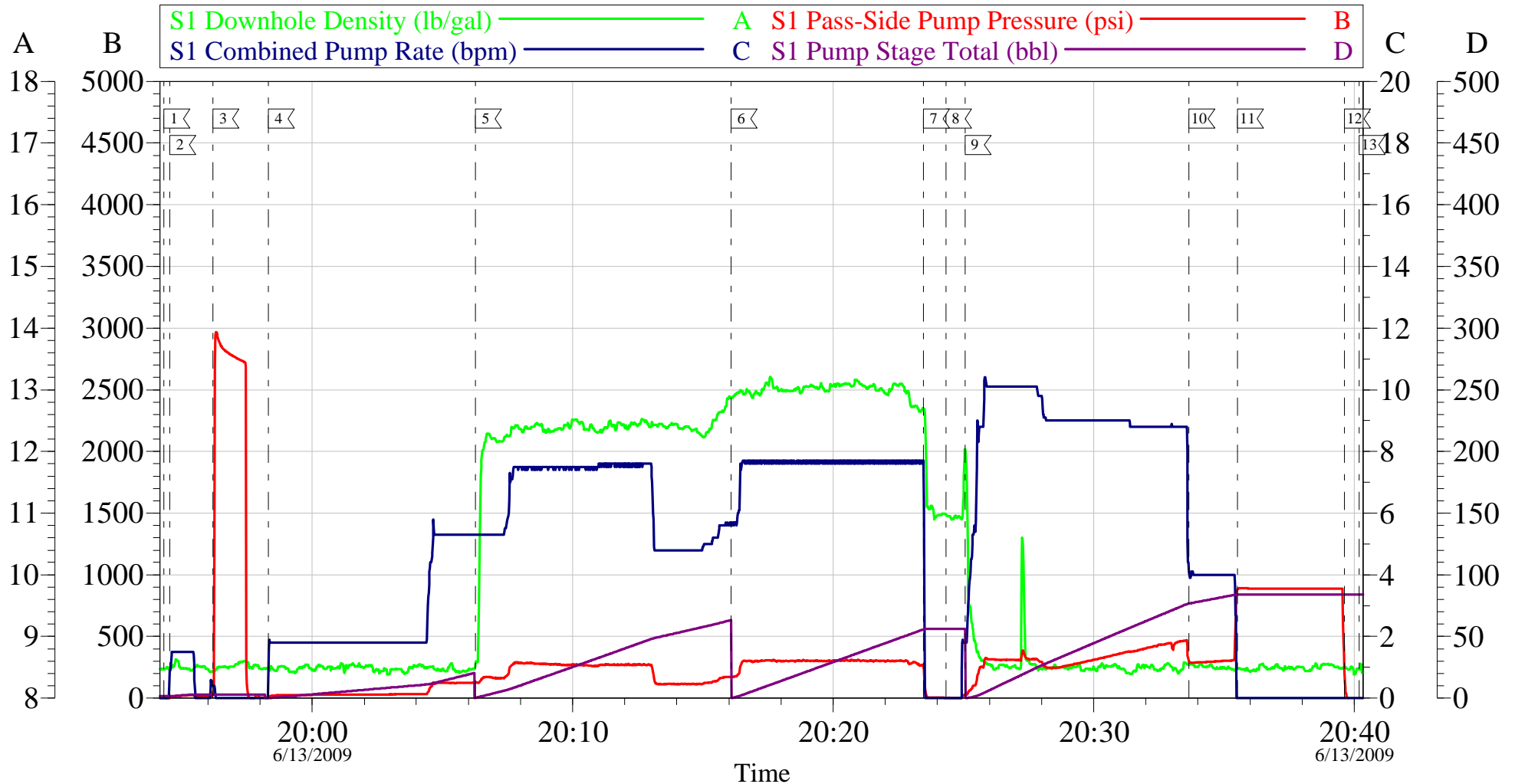
Sold To #: 300721	Ship To #: 2729267	Quote #:	Sales Order #: 6725156
Customer: WILLIAMS PRODUCTION RMT INC EBUSINE	Customer Rep: TURNER, JOHN		
Well Name: RWF	Well #: 431-17	API/UWI #:	
Field: PICEANCE	City (SAP): RIFLE	County/Parish: Garfield	State: Colorado
Legal Description:			
Lat: N 0 deg. OR N 0 deg. 0 min. 0 secs.		Long: E 0 deg. OR E 0 deg. 0 min. 0 secs.	
Contractor: CYCLONE 14	Rig/Platform Name/Num: CYCLONE 14		
Job Purpose: Cement Surface Casing	Ticket Amount:		
Well Type: Development Well	Job Type: Cement Surface Casing		
Sales Person: KOHL, KYLE	Srvc Supervisor: CALDWELL, JEFFREY	MBU ID Emp #:	369111

Activity Description	Date/Time	Cht #	Rate bbl/min	Volume bbl		Pressure psig		Comments
				Stage	Total	Tubing	Casing	
Call Out	06/13/2009 12:00							ELITE #9
Pre-Convoy Safety Meeting	06/13/2009 13:30							PLUG CONTAINER #D0726
Crew Leave Yard	06/13/2009 14:00							DALLAS SCOTT IS SAFETY OBSERVER ON JOB.
Arrive At Loc	06/13/2009 17:00							CASING WAS STILL BEING RUN.
Safety Meeting	06/13/2009 17:05							ALL PERSONAL ASSOCIATED WITH JOB ATTENDED.
Rig-Up Equipment	06/13/2009 17:10							
Pre-Job Safety Meeting	06/13/2009 19:30							ALL PERSONAL ASSOCIATED WITH JOB ATTENDED.
Start Job	06/13/2009 19:54		1.5	1.5	1.5		23.0	TD:1155' TP:1135' SJ:41.4' MUD:10 PPG 13.5" OPEN HOLE.
Prime Pumps	06/13/2009 19:54							H2O
Test Lines	06/13/2009 19:56					2500.0		
Pump Spacer	06/13/2009 19:58		5	20	20		125.0	H2O
Pump Lead Cement	06/13/2009 20:06		7.5	67.8	64		270.0	160 SKS 12.3 PPG 2.38 CUFT/SAK 13.75 GAL/SAK.WP:130 BP:13
Pump Tail Cement	06/13/2009 20:16		7.5	60.1	56		300.0	160 SKS 12.8 PPG 2.11 CUFT/SAK 11.75 GAL/SAK.WP:110 BP:11

Activity Description	Date/Time	Cht #	Rate bbl/min	Volume bbl		Pressure psig		Comments
				Stage	Total	Tubing	Casing	
Shutdown	06/13/2009 20:23							
Drop Top Plug	06/13/2009 20:24							PLUG AWAY
Pump Displacement	06/13/2009 20:25		10	86.1	84		440.0	H2O
Slow Rate	06/13/2009 20:33		4	76	76		250.0	
Bump Plug	06/13/2009 20:35		4	86.1	84		890.0	PLUG BUMPED.
Check Floats	06/13/2009 20:39							FLOATS HELD 3/4 BBL BACK. GOOD CIRCULATION THROUGH OUT JOB.
End Job	06/13/2009 20:40							20 BBLS OF CEMENT BACK TO PIT.
Post-Job Safety Meeting (Pre Rig-Down)	06/13/2009 20:45							ALL PERSONAL ASSOCIATED WITH JOB ATTENDED.
Rig-Down Equipment	06/13/2009 20:50							
Crew Leave Location	06/13/2009 22:30							THANK YOU FOR CHOOSING HALLIBURTON JEFF CALDWELL AND CREW.

WILLIAMS

9 5/8" SURFACE



Customer: Williams
Well Description: RWF 431-17
Company Rep: John Turner

Job Date: 13-Jun-2009
Job Type: Surface
Cement Supervisor: Jeff Caldwell

Sales Order #: 6725156
ADC Used: Yes
Elite #: Elite 9/Todd Dubon

OptiCem v6.4.2
13-Jun-09 21:09