

CONFIDENTIALITY NOTES:

The information contained in this plat is legally privileged and confidential information intended only for the use of the recipients. If you are not the intended recipients, you are hereby notified that any use, dissemination, distribution or copying of this information is strictly prohibited.

SGV 1J-2 PAD



**WILLIAM H. SMITH
& ASSOCIATES P.C.**
SURVEYING CONSULTANTS

550 EAST SECOND NORTH PHONE: 307-875-3638
GREEN RIVER, WY 307-875-3639
www.wsmithpc.com

DRAWN BY: RCR

CHECKED BY: RCR

PROJECT NO: 001

JOB NO: 2011700

REVISIONS:

LEGEND

- EXISTING ROAD
- PROPOSED ROAD

PROPOSED ACCESS LENGTH = 481±

LOCATION:
SGV 1J-2 PAD
WITHIN NW/4SE/4
SECTION 1,
T 8 S, R 96 W, 6TH PM.
GARFIELD COUNTY,
COLORADO

PROPOSED ACCESS ROAD MAP

NOBLE ENERGY, INC
SGV DEEP UNIT 11-31H, 18-14H &
18-24H

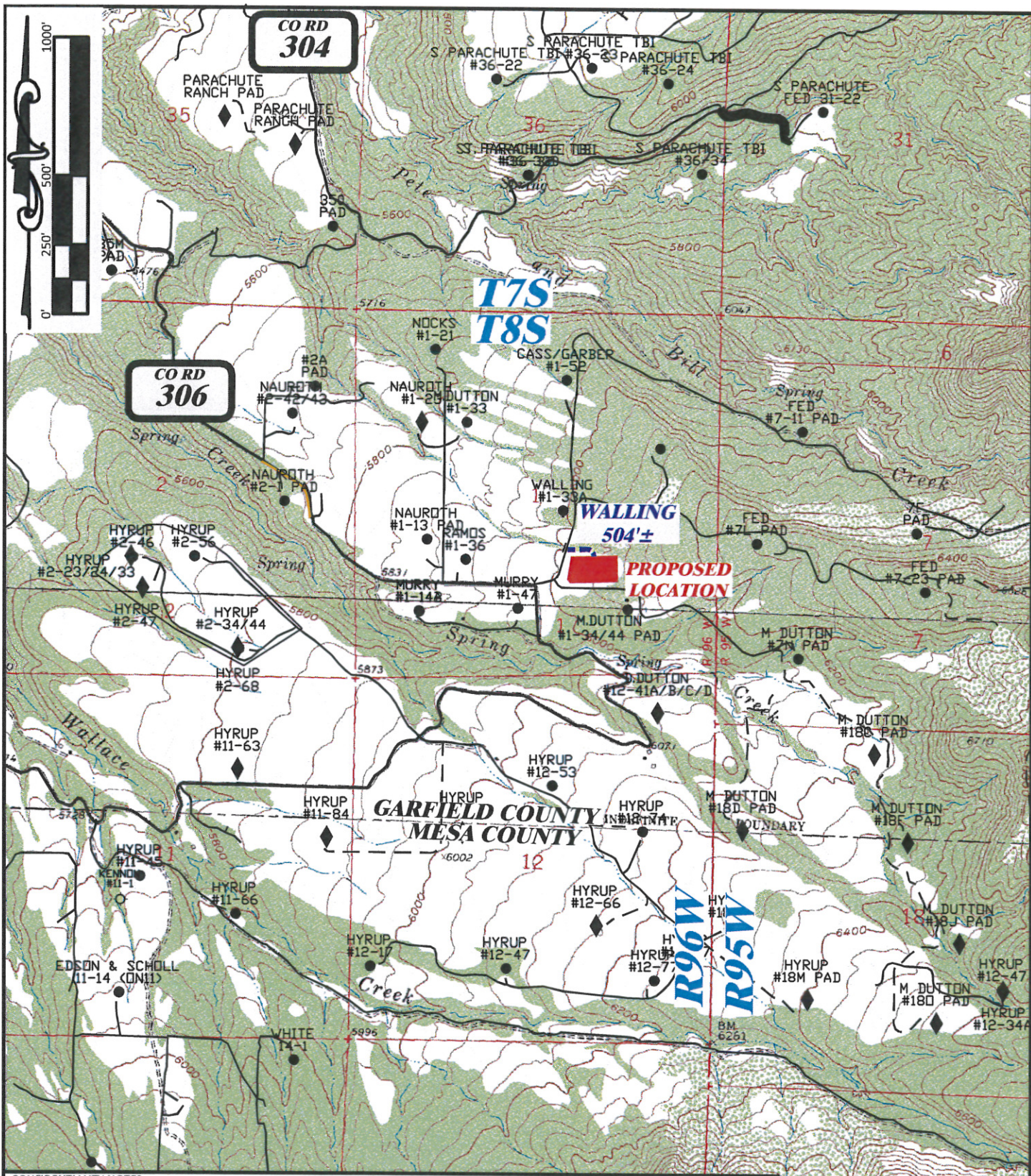
FOR NOBLE ENERGY, INC.

SCALE: 1"=2000'

EXHIBIT 8

DATE: 10/31/2011

SHEET 1 OF 1



CONFIDENTIALITY NOTES:

The information contained in this plat is legally privileged and confidential information intended only for the use of the recipients. If you are not the intended recipients, you are hereby notified that any use, dissemination, distribution or copying of this information is strictly prohibited.

SGV 1J-2 PAD



**WILLIAM H. SMITH
& ASSOCIATES P.C.
SURVEYING CONSULTANTS**

550 EAST SECOND NORTH
GREEN RIVER, WY 80633
PHONE: 307-875-3638
307-875-3639
www.whsmithpc.com

DRAWN BY: RCR

CHECKED BY: RCR

PROJECT NO: 001

JOB NO: 2011700

REVISIONS:

LEGEND

- EXISTING ROAD
- PROPOSED PIPELINE

PROPOSED PIPELINE LENGTH = 503'±

LOCATION:
SGV 1J-2 PAD
WITHIN NW/4SE/4
SECTION 1,
T 8 S, R 96 W, 6TH PM.
GARFIELD COUNTY,
COLORADO

PROPOSED PIPELINE MAP

NOBLE ENERGY, INC
SGV DEEP UNIT 11-31H, 18-14H &
18-24H

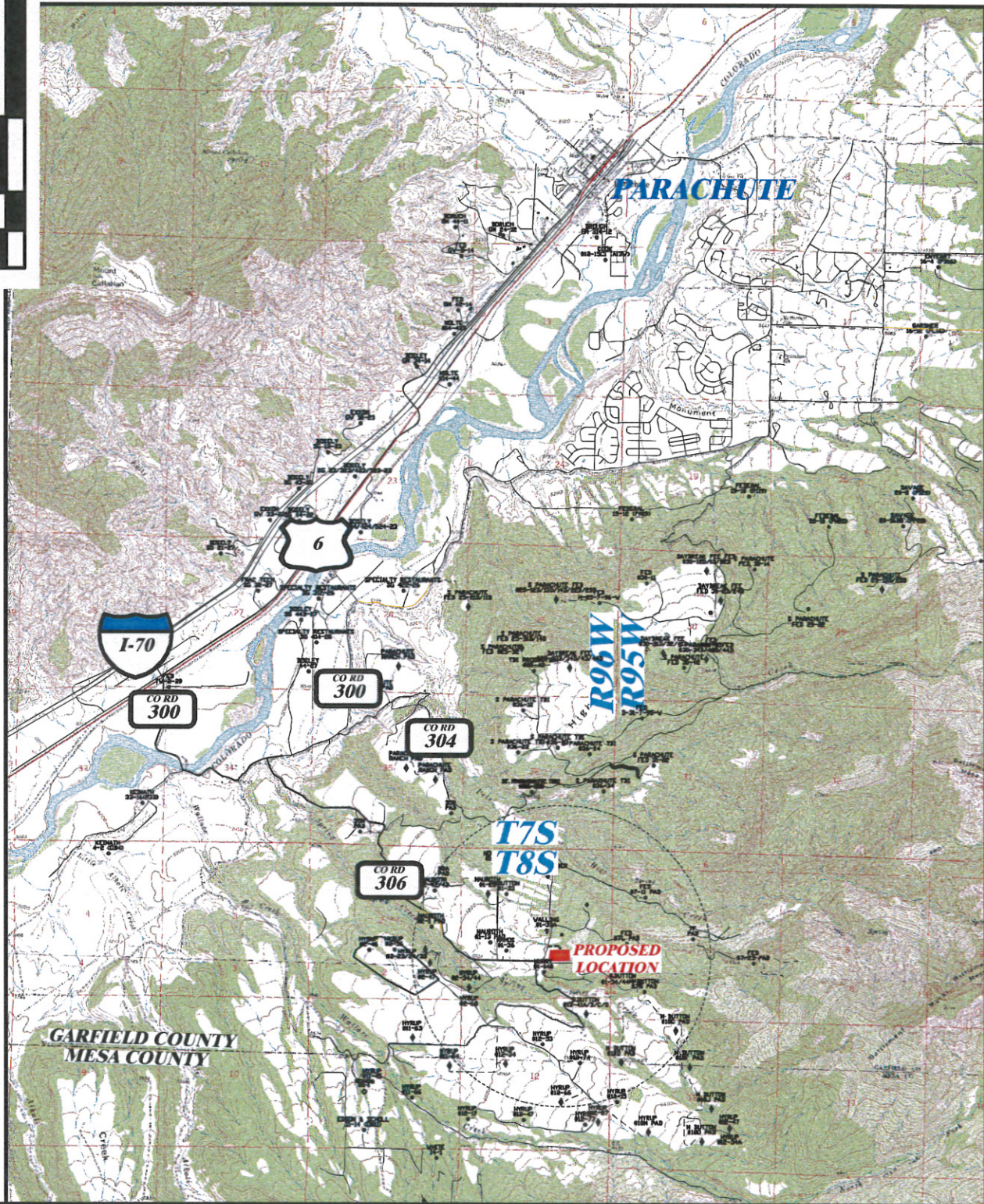
FOR NOBLE ENERGY, INC.

SCALE: 1"=2000'

EXHIBIT 9

DATE: 10/31/2011

SHEET 1 OF 1



CONFIDENTIALITY NOTES:

The information contained in this plat is legally privileged and confidential information intended only for the use of the recipients. If you are not the intended recipients, you are hereby notified that any use, dissemination, distribution or copying of this information is strictly prohibited.

SGV 1J-2 PAD



**WILLIAM H. SMITH
& ASSOCIATES P.C.**
SURVEYING CONSULTANTS

590 EAST SECOND NORTH PHONE: 307-875-3638
GREEN RIVER, WY 307-875-3639
www.whsmithpc.com

DRAWN BY: RCR

CHECKED BY: RCR

PROJECT NO: 001

JOB NO: 2011700

REVISIONS:

LEGEND

- EXISTING ROAD
- PROPOSED ROAD

PROPOSED ACCESS LENGTH = 481±

LOCATION:
SGV 1J-2 PAD

WITHIN NW/4SE/4
SECTION 1,
T 8 S, R 96 W, 6TH PM.
GARFIELD COUNTY,
COLORADO

PROPOSED ACCESS ROAD MAP

NOBLE ENERGY, INC
SGV DEEP UNIT 11-31H, 18-14H &
18-24H
FOR NOBLE ENERGY, INC.

SCALE: 1"=1 MILE

EXHIBIT 10

DATE: 10/31/2011

SHEET 1 OF 1