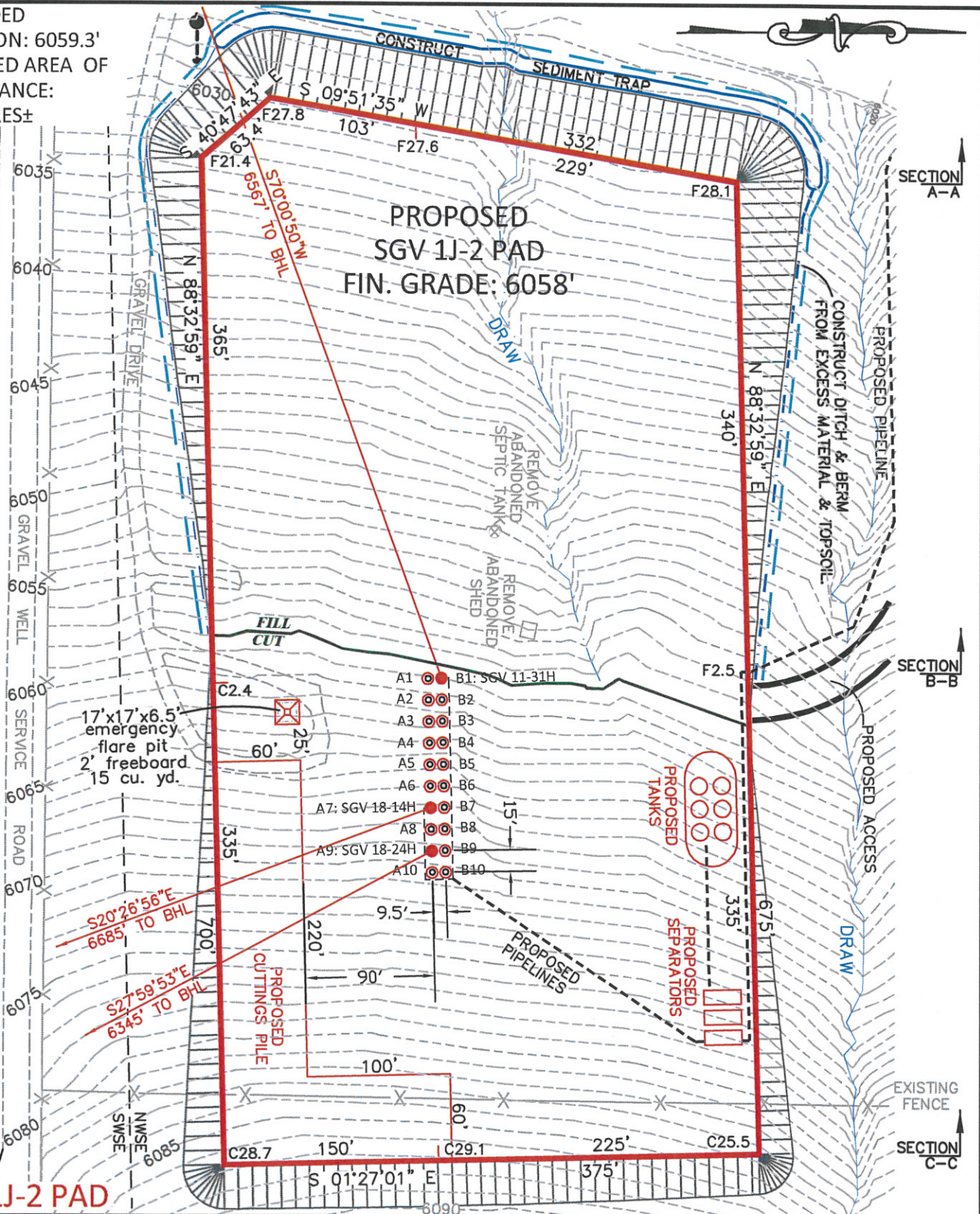


UNGRADED
ELEVATION: 6059.3'
PROPOSED AREA OF
DISTURBANCE:
8.84 ACRES±

EXISTING GAS PIPELINE



CONFIDENTIALITY NOTES:

The information contained in this plat is legally privileged and confidential information intended only for the use of the recipients. If you are not the intended recipients, you are hereby notified that any use, dissemination, distribution or copying of this information is strictly prohibited.

WILLIAM H. SMITH & ASSOCIATES P.C.
SURVEYING CONSULTANTS
550 EAST SECOND NORTH GREEN RIVER, WY 80633
PHONE: 307-875-3638 307-875-3639
www.wsmithpc.com

ESTIMATED EARTHWORK VOLUMES IN CUBIC YARDS				
ITEM	CUT CU. YARD	FILL CU. YARD	TOPSOIL CU. YARD	EXCESS CU. YARD
PAD	85,696	78,612	5,994	1,090
PIT	NONE			
TOTAL	85,696	78,612	5,994	1,090

LOCATION:
WITHIN NW/4 SE/4
SECTION 1,
T 8 S, R 96 W,
6TH PM.
GARFIELD COUNTY,
COLORADO

CONSTRUCTION LAYOUT DRAWING

NOBLE ENERGY, INC
SGV DEEP UNIT 11-31H, 18-14H &
18-24H

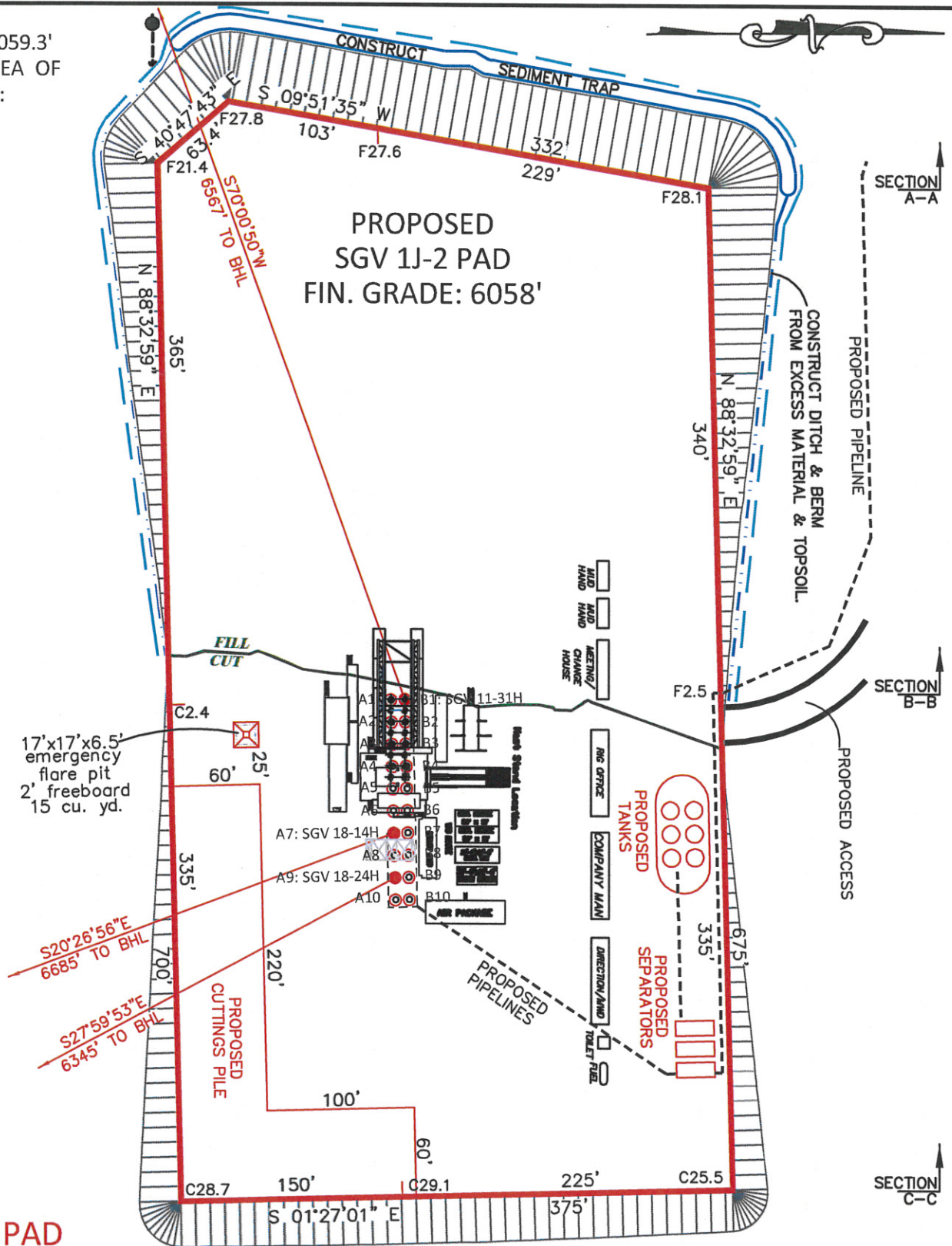
FOR NOBLE ENERGY, INC.

SCALE: 1"=200'
DATE: 10/31/2011
EXHIBIT 3
SHEET 1 OF 5

DRAWN BY: RCR
PROJECT NO: 001
REVISIONS:

CHECKED BY: RCR
JOB NO: 2011700

UNGRADED
ELEVATION: 6059.3'
PROPOSED AREA OF
DISTURBANCE:
8.84 ACRES±



SGV 1J-2 PAD

CONFIDENTIALITY NOTES:

The information contained in this plat is legally privileged and confidential information intended only for the use of the recipients. If you are not the intended recipients, you are hereby notified that any use, dissemination, distribution or copying of this information is strictly prohibited.

0' 25' 50' 100'



**WILLIAM H. SMITH
& ASSOCIATES P.C.**
SURVEYING CONSULTANTS
550 EAST SECOND NORTH PHONE: 307-875-3638
GREEN RIVER, WY 307-875-3639
www.whsmithpc.com

RIG LAYOUT

LOCATION:
WITHIN NW/4 SE/4
SECTION 1,
T 8 S, R 96 W,
6TH PM.
GARFIELD COUNTY,
COLORADO

CONSTRUCTION LAYOUT DRAWING

NOBLE ENERGY, INC
SGV DEEP UNIT 11-31H, 18-14H &
18-24H

FOR NOBLE ENERGY, INC.

SCALE: 1"=200'

EXHIBIT 3

DATE: 10/31/2011

SHEET 2 OF 5

DRAWN BY: RCR

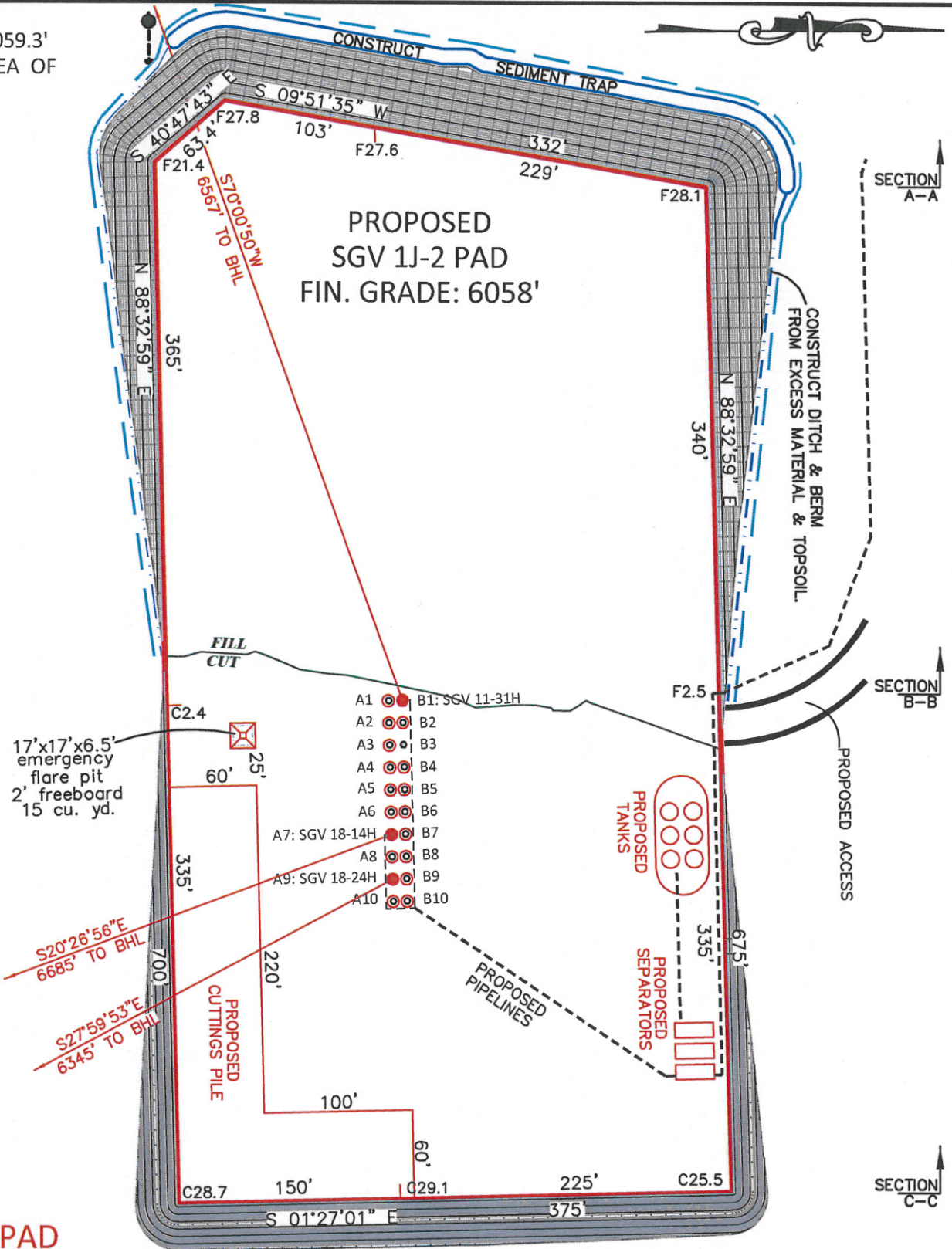
CHECKED BY: RCR

PROJECT NO: 001

JOB NO: 2011700

REVISIONS:

UNGRADED
ELEVATION: 6059.3'
PROPOSED AREA OF
DISTURBANCE:
8.84 ACRES±



CONFIDENTIALITY NOTES:

The information contained in this plat is legally privileged and confidential information intended only for the use of the recipients. If you are not the intended recipients, you are hereby notified that any use, dissemination, distribution or copying of this information is strictly prohibited.



**WILLIAM H. SMITH
& ASSOCIATES P.C.**
SURVEYING CONSULTANTS
590 EAST SECOND NORTH GREEN RIVER, WY
PHONE: 307-875-3638
307-875-3639
www.whsmithpc.com

DESIGN CONTOURS

LOCATION:
WITHIN NW/4 SE/4
SECTION 1,
T 8 S, R 96 W,
6TH PM.
GARFIELD COUNTY,
COLORADO

CONSTRUCTION LAYOUT DRAWING

NOBLE ENERGY, INC
**SGV DEEP UNIT 11-31H, 18-14H &
18-24H**

FOR NOBLE ENERGY, INC.

SCALE: 1"=200'

EXHIBIT 3

DATE: 10/31/2011

SHEET 3 OF 5

DRAWN BY: RCR

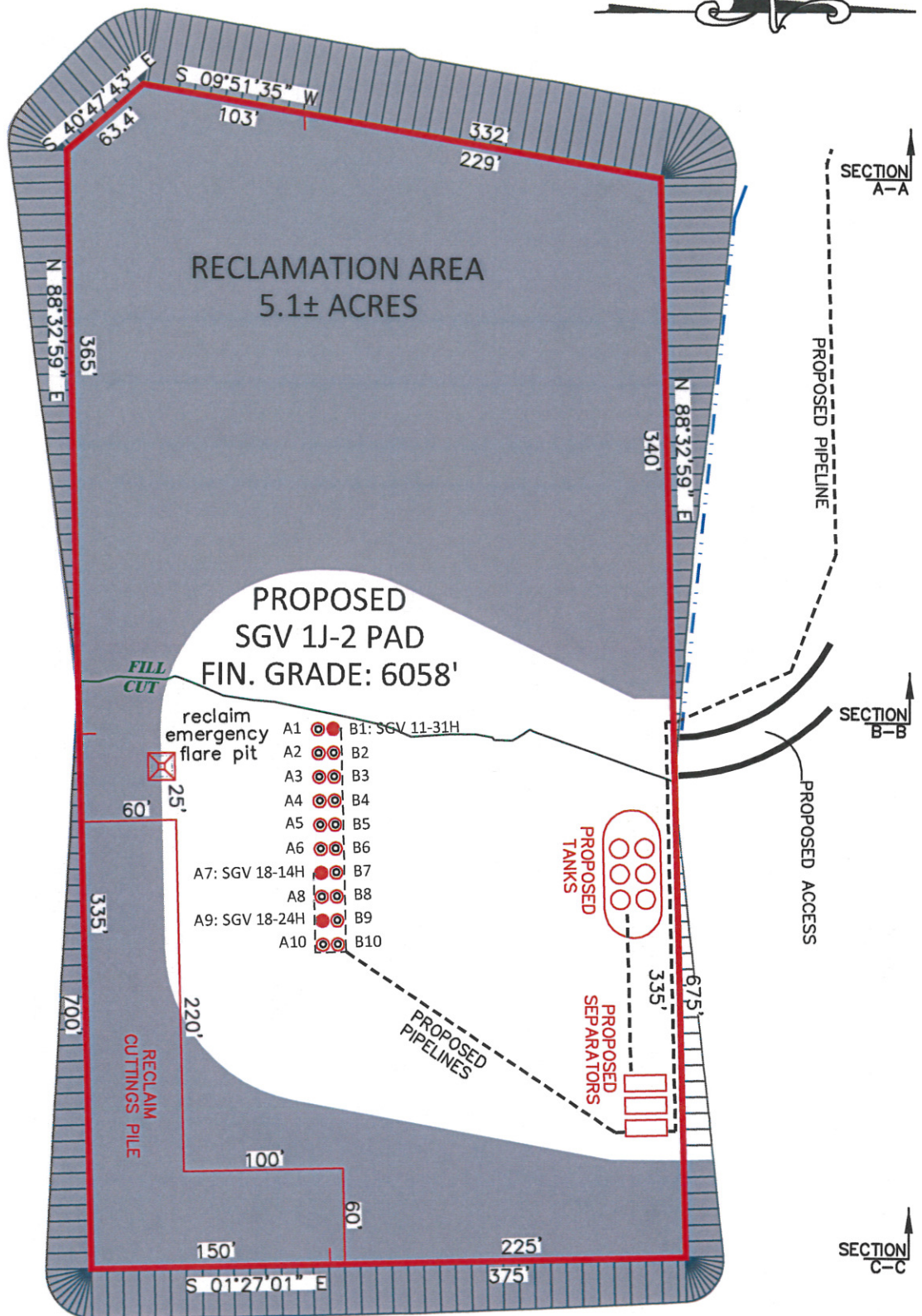
CHECKED BY: RCR

PROJECT NO: 001

JOB NO: 2011700

REVISIONS:

UNGRADED
ELEVATION: 6059.3'
PROPOSED AREA OF
DISTURBANCE:
8.84 ACRES±



SGV 1J-2 PAD

CONFIDENTIALITY NOTES:

The information contained in this plat is legally privileged and confidential information intended only for the use of the recipients. If you are not the intended recipients, you are hereby notified that any use, dissemination, distribution or copying of this information is strictly prohibited.

0' 25' 50' 100'



**WILLIAM H. SMITH
& ASSOCIATES P.C.**

SURVEYING CONSULTANTS
550 EAST SECOND NORTH PHONE: 307-875-3638
GREEN RIVER, WY 307-875-3639
www.whsmithpc.com

**PROPOSED
RECLAMTION**

LOCATION:
WITHIN NW/4 SE/4
SECTION 1,
T 8 S, R 96 W,
6TH PM.
GARFIELD COUNTY,
COLORADO

CONSTRUCTION LAYOUT DRAWING

NOBLE ENERGY, INC
**SGV DEEP UNIT 11-31H, 18-14H &
18-24H**

FOR NOBLE ENERGY, INC.

SCALE: 1"=200'

EXHIBIT 3

DATE: 10/31/2011

SHEET 4 OF 5

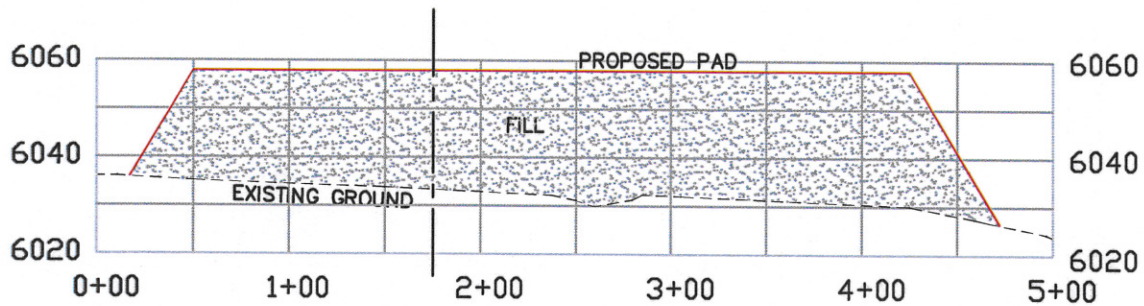
DRAWN BY: RCR

CHECKED BY: RCR

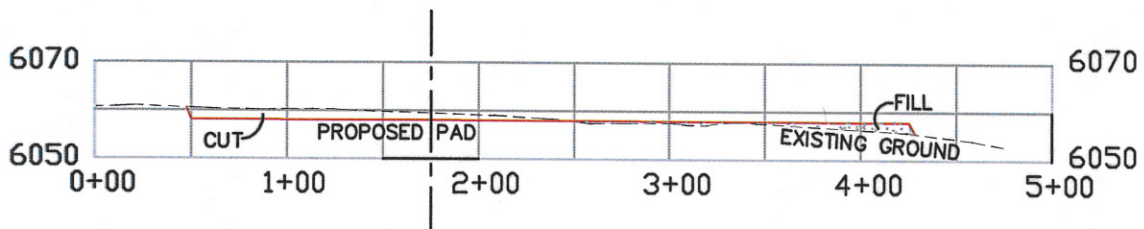
PROJECT NO: 001

JOB NO: 2011700

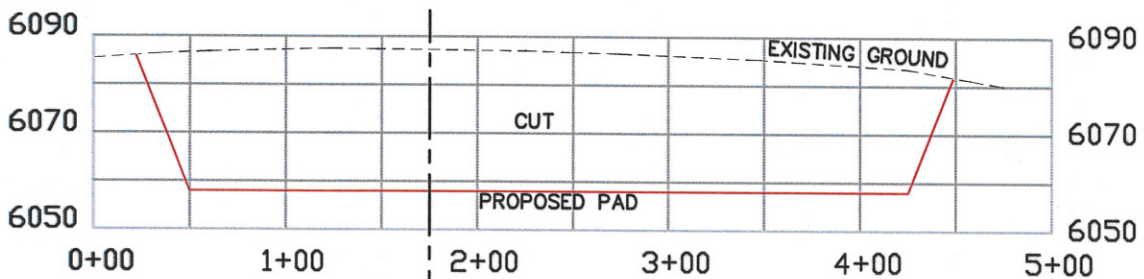
REVISIONS:



SECTION A-A



SECTION B-B



SECTION C-C

SGV 1J-2 PAD

CONFIDENTIALITY NOTES:

The information contained in this plat is legally privileged and confidential information intended only for the use of the recipients. If you are not the intended recipients, you are hereby notified that any use, dissemination, distribution or copying of this information is strictly prohibited.



**WILLIAM H. SMITH
& ASSOCIATES P.C.**

SURVEYING CONSULTANTS
550 EAST SECOND NORTH PHONE: 307-875-3638
GREEN RIVER, WY 307-875-3639
www.whsmithpc.com

DRAWN BY: RCR

CHECKED BY: RCR

PROJECT NO: 001

JOB NO: 2011700

REVISIONS:

**CROSS SECTION
VIEWS
A-A, B-B & C-C**

LOCATION:

WITHIN NW/4 SE/4
SECTION 1,
T 8 S, R 96 W,
6TH PM.
GARFIELD COUNTY,
COLORADO

CONSTRUCTION LAYOUT DRAWING

NOBLE ENERGY, INC
SGV DEEP UNIT 11-31H, 18-14H &
18-24H

FOR NOBLE ENERGY, INC.

SCALE: 1"=100'H, 1"=40'V

EXHIBIT 3

DATE: 10/31/2011

SHEET 5 OF 5