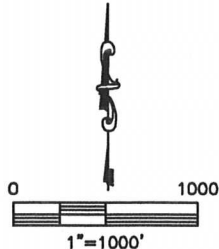
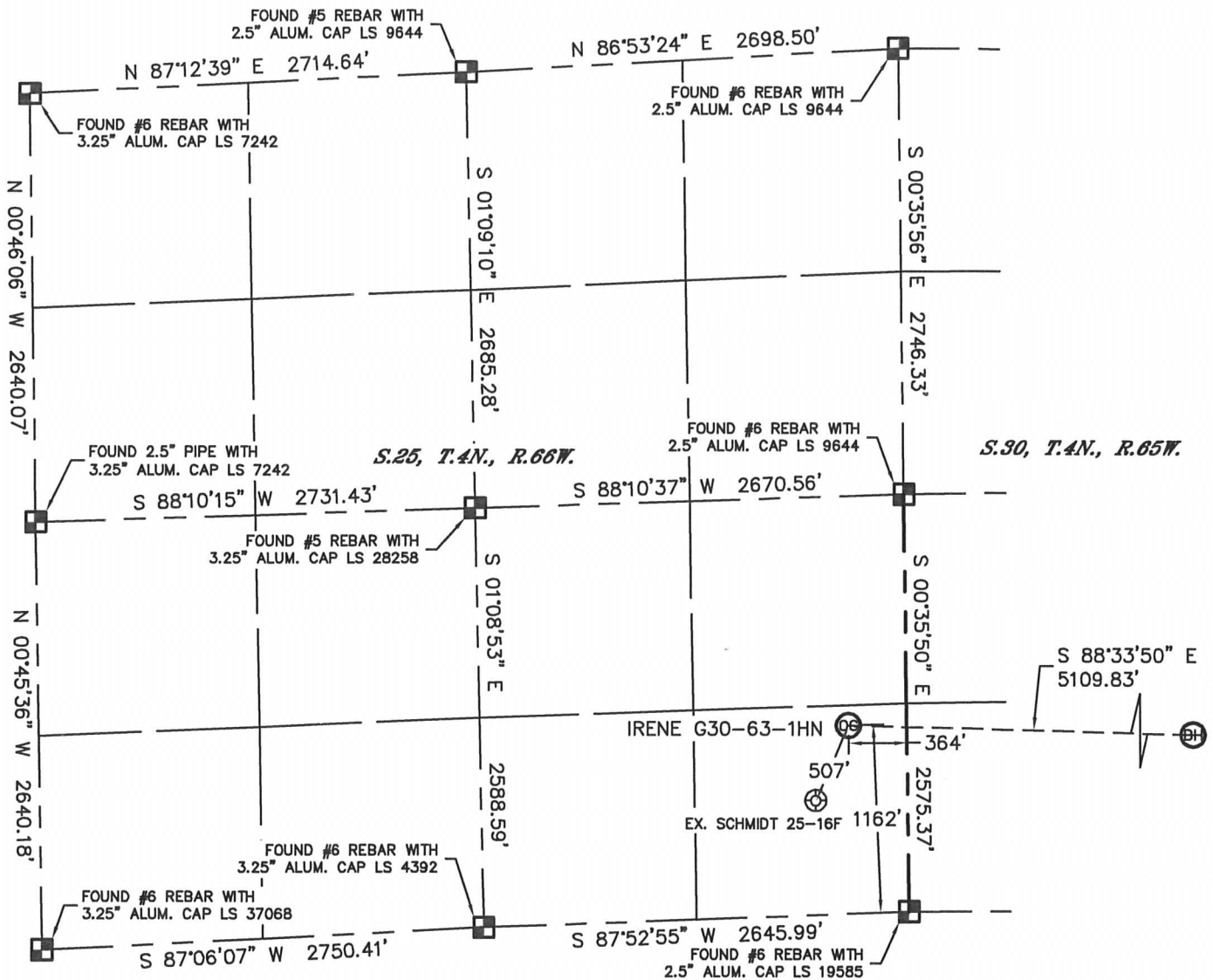


# WELL LOCATION CERTIFICATE

THIS MAP DOES NOT REPRESENT A BOUNDARY SURVEY

SECTION: 25  
TOWNSHIP: 4N  
RANGE: 66W



In accordance with a request from Jacob Rice with Noble Energy Inc., Lat40°, Inc. has determined the surface location of the IRENE G30-63-1HN to be 1162' from the SOUTH line and 364' from the EAST line as measured at right angles from the section lines of Section 25, Township 4 North, Range 66 West and the bottom hole to be 990' from the SOUTH line and 535' from the EAST line as measured at right angles from the section lines of Section 30, Township 4 North, Range 65 West of the Sixth Principal Meridian, County of Weld, State of Colorado.

I hereby state that this Well Location Certificate was prepared by me, or under my direct supervision, that the fieldwork was completed on 8/17/11, for and on behalf of Noble Energy Inc. That this is not a Land Survey Plat or an Improvement Survey Plat, and that it is not to be relied upon for establishment of fence, building, or other future improvement lines.

## NOTE:

- 1) Bearings shown are Grid Bearings of the Colorado State Plane Coordinate System, North Zone, North American Datum 1983/2007. The lineal dimensions as contained herein are based upon the "U.S. Survey Foot."
- 2) Ground elevations are based on an observed GPS elevation (NAVD 1988 DATUM).
- 3) NEAREST EXISTING WELL (WITHIN SECTION): SCHMIDT 25-16F, 507'
- 4) IMPROVEMENTS: See LOCATION DRAWING for all visible improvements within 400' of disturbed area.
- 5) SURFACE USE: PASTURE
- 6) INSTRUMENT OPERATOR: BRIAN BRINKMAN

SURFACE LOCATION  
LATITUDE: 40.27938°N  
LONGITUDE: 104.71682°W  
PDOP: 1.9  
ELEV: 4802'  
1/4, 1/4: SE1/4SE1/4  
NEAREST PROPERTY LINE: 362' SE

BOTTOM HOLE  
LATITUDE: 40.27890°N  
LONGITUDE: 104.69852°W

## NOTE

According to Colorado law, you must commence any legal action based upon any defect in this W.L.C. within three years after you discover such defect. In no event, may any action based upon any defect in this survey be commenced more than ten years after the date of the certificate shown hereon. (13-80-105 C.R.S.)

## LEGEND

- = ALIQUOT MONUMENT AS DESCRIBED
- = CALCULATED POSITION

(SHEET 1 OF 2)

Brian T. Brinkman-On behalf of Lat40°, Inc.  
Colorado Licensed Professional  
Land Surveyor No. 38175

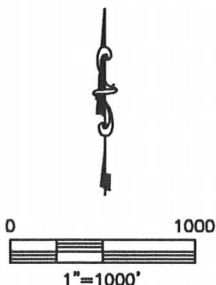
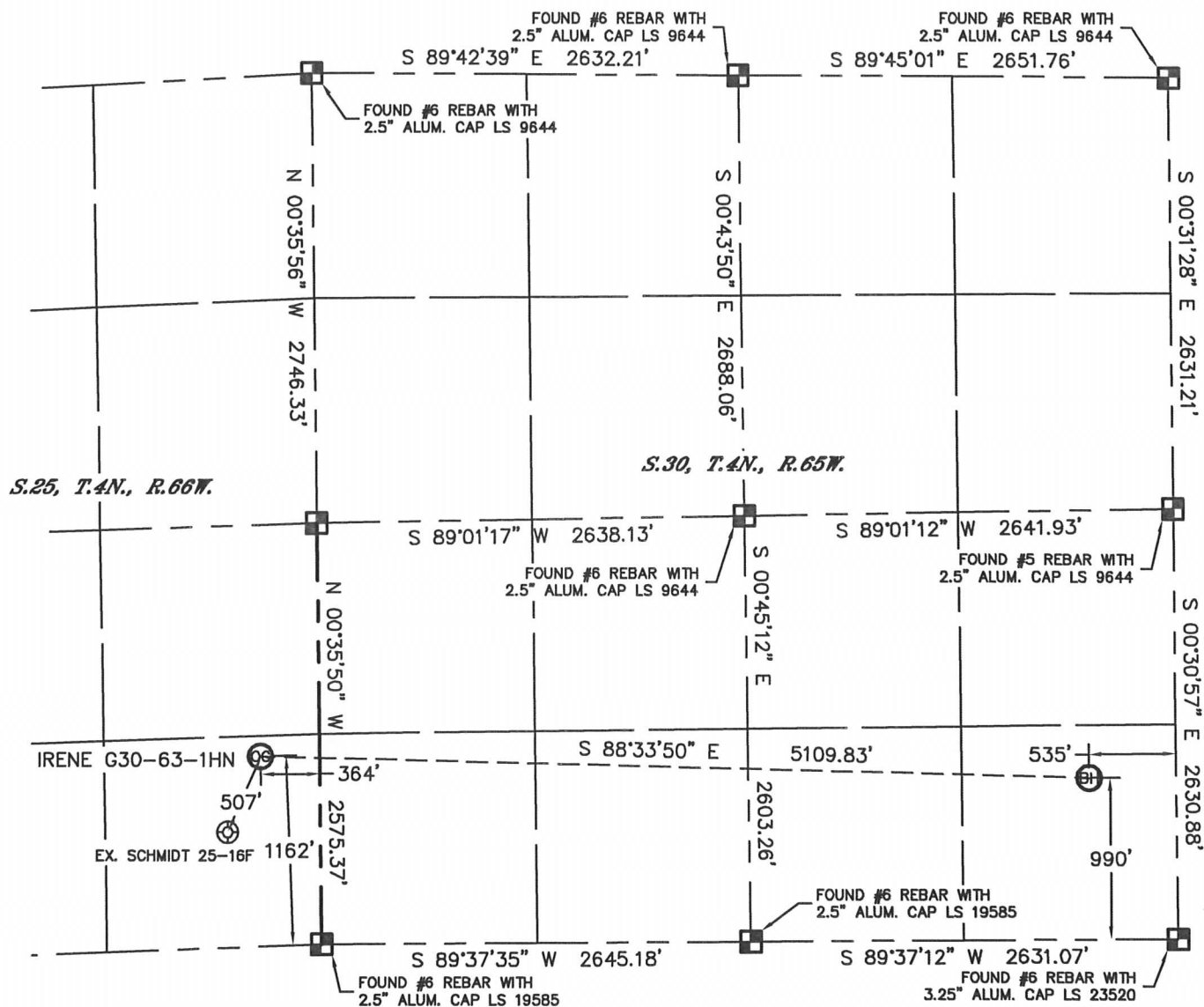
PROJECT#: 2011075



# WELL LOCATION CERTIFICATE

THIS MAP DOES NOT REPRESENT A BOUNDARY SURVEY



SECTION: 25  
TOWNSHIP: 4N  
RANGE: 66W



## NOTE

According to Colorado law, you must commence any legal action based upon any defect in this W.L.C. within three years after you discover such defect. In no event, may any action based upon any defect in this survey be commenced more than ten years after the date of the certificate shown hereon. (13-80-105 C.R.S.)

## LEGEND

-  = ALIQUOT MONUMENT AS DESCRIBED
-  = CALCULATED POSITION

(SHEET 2 OF 2)

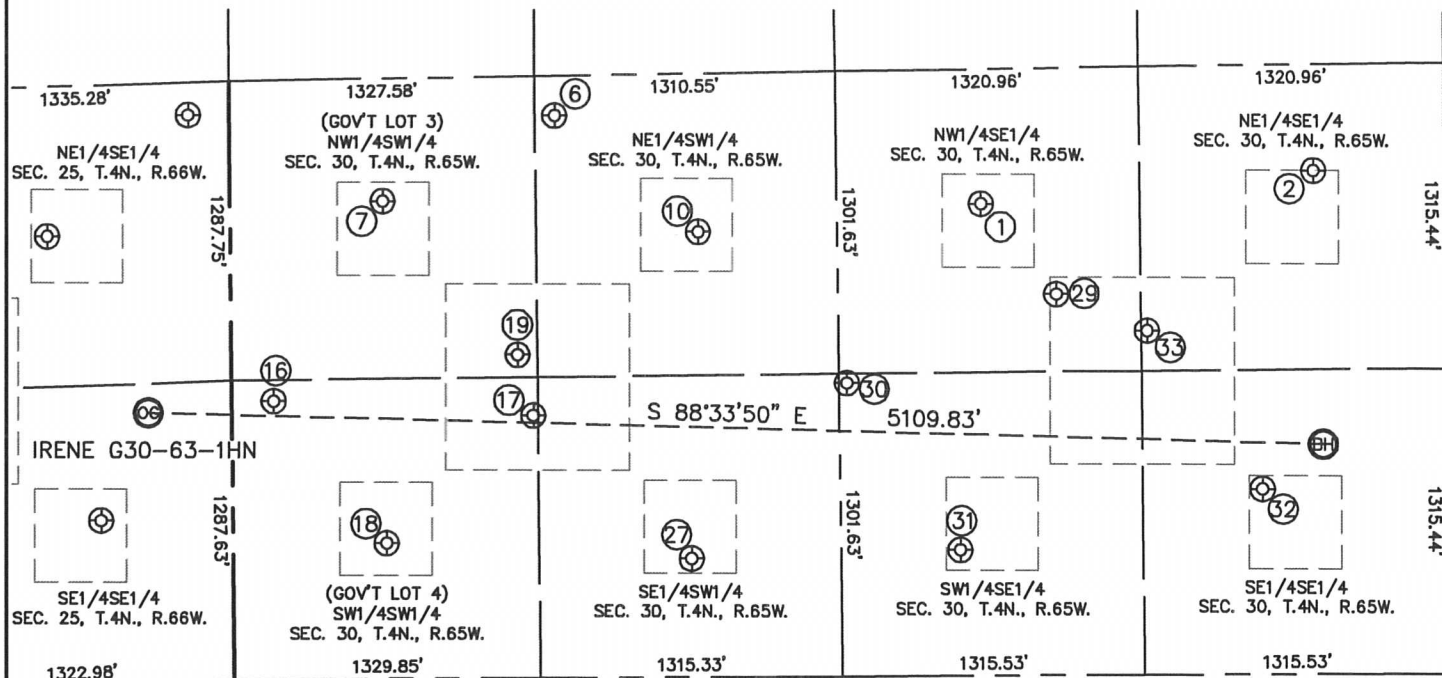
Brian T. Brinkman—On behalf of Lat40°, Inc.  
Colorado Licensed Professional  
Land Surveyor No. 38175

PROJECT#: 2011075



Loveland, CO 80538

SECTION: 25  
TOWNSHIP: 4N  
RANGE: 66W



- |                                                                                                                                                |                                                                                                                                                    |                                                                                                                                              |                                                                                                                                              |                                                                                                                                              |
|------------------------------------------------------------------------------------------------------------------------------------------------|----------------------------------------------------------------------------------------------------------------------------------------------------|----------------------------------------------------------------------------------------------------------------------------------------------|----------------------------------------------------------------------------------------------------------------------------------------------|----------------------------------------------------------------------------------------------------------------------------------------------|
| <p>①<br/>OSTER G30-10<br/>NW1/4SE1/4<br/>2030' FSL<br/>2011' FEL<br/>LAT-40.28177'N<br/>LONG-104.70381'W<br/>PDOP: 3.0<br/>ELEV: 4827'</p>     | <p>②<br/>OSTER G30-9<br/>NE1/4SE1/4<br/>2167' FSL<br/>568' FEL<br/>LAT-40.28213'N<br/>LONG-104.69864'W<br/>PDOP: 3.1<br/>ELEV: 4837'</p>           | <p>③<br/>SCHMIDT G30-20<br/>NE1/4SW1/4<br/>2419' FSL<br/>1413' FWL<br/>LAT-40.28285'N<br/>LONG-104.71046'W<br/>PDOP: 2.8<br/>ELEV: 4801'</p> | <p>④<br/>SCHMIDT 30-12G<br/>NW1/4SW1/4<br/>2055' FSL<br/>663' FWL<br/>LAT-40.28185'N<br/>LONG-104.71315'W<br/>PDOP: 1.9<br/>ELEV: 4802'</p>  | <p>⑤<br/>SCHMIDT 30-11G<br/>NE1/4SW1/4<br/>1916' FSL<br/>2035' FWL<br/>LAT-40.28146'N<br/>LONG-104.70823'W<br/>PDOP: 1.1<br/>ELEV: 4813'</p> |
| <p>⑥<br/>SCHMIDT G30-33<br/>SW1/4SW1/4<br/>1198' FSL<br/>181' FWL<br/>LAT-40.27950'N<br/>LONG-104.71487'W<br/>PDOP: 1.6<br/>ELEV: 4815'</p>    | <p>⑦<br/>ELMER W SCHMIDT UNIT<br/>SW1/4SW1/4<br/>1129' FSL<br/>1308' FWL<br/>LAT-40.27931'N<br/>LONG-104.71083'W<br/>PDOP: 1.6<br/>ELEV: 4811'</p> | <p>⑧<br/>2SCHMIDT 30-13G<br/>SW1/4SW1/4<br/>584' FSL<br/>666' FWL<br/>LAT-40.27782'N<br/>LONG-104.71313'W<br/>PDOP: 4.3<br/>ELEV: 4822'</p>  | <p>⑨<br/>SCHMIDT G30-25<br/>NW1/4SW1/4<br/>1391' FSL<br/>1243' FWL<br/>LAT-40.28003'N<br/>LONG-104.71107'W<br/>PDOP: 2.5<br/>ELEV: 4809'</p> | <p>⑩<br/>SCHMIDT 30-14G<br/>SE1/4SW1/4<br/>511' FSL<br/>1992' FWL<br/>LAT-40.27761'N<br/>LONG-104.70838'W<br/>PDOP: 2.3<br/>ELEV: 4818'</p>  |
| <p>⑪<br/>OSTER-MOLANDER 1<br/>NW1/4SE1/4<br/>1640' FSL<br/>1686' FEL<br/>LAT-40.28069'N<br/>LONG-104.70265'W<br/>PDOP: 1.1<br/>ELEV: 4835'</p> | <p>⑫<br/>OSTER G30-24<br/>SW1/4SE1/4<br/>1262' FSL<br/>2602' FEL<br/>LAT-40.27966'N<br/>LONG-104.70593'W<br/>PDOP: 1.2<br/>ELEV: 4835'</p>         | <p>⑬<br/>OSTER G30-15<br/>SW1/4SE1/4<br/>542' FSL<br/>2113' FEL<br/>LAT-40.27768'N<br/>LONG-104.70418'W<br/>PDOP: 1.0<br/>ELEV: 4858'</p>    | <p>⑭<br/>OSTER G30-16X<br/>SE1/4SE1/4<br/>799' FSL<br/>800' FEL<br/>LAT-40.27838'N<br/>LONG-104.69947'W<br/>PDOP: 1.8<br/>ELEV: 4875'</p>    | <p>⑮<br/>OSTER G30-23<br/>NE1/4SE1/4<br/>1480' FSL<br/>1292' FEL<br/>LAT-40.28025'N<br/>LONG-104.70124'W<br/>PDOP: 1.9<br/>ELEV: 4841'</p>   |

