

Project: Weld County Colorado (NAD 83)  
 Site: Sec. 25, T4N, R66W  
 Well: Irene G30-63-1HN  
 Wellbore: Plan A - Rev 0 (PERMITTING PLAN ONLY)  
 Design: Plan A - Rev 0 Proposal

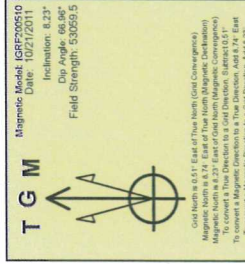
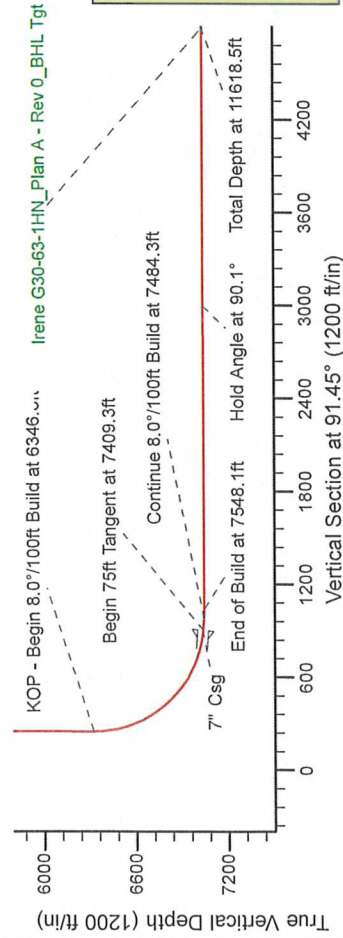
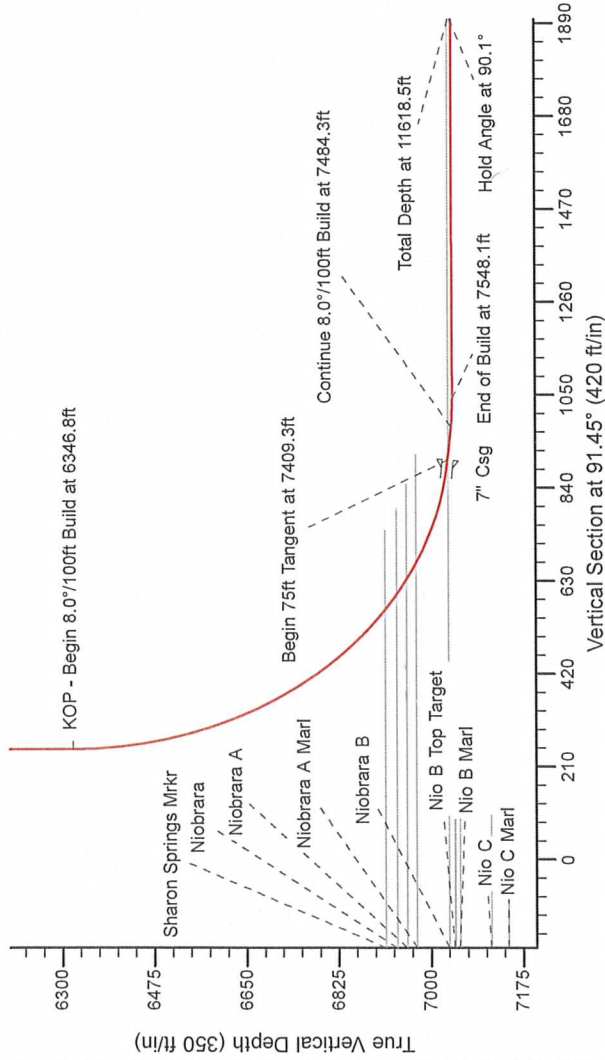
Noble Energy

HALLIBURTON  
 Consulting

# SECTION DETAILS

Sec	MD	Inc	Azi	TVD	+N/S	+E/W	Dleg	TFace	Vsect	Target
1	0.0	0.00	0.00	0.0	0.0	0.0	0.00	0.00	0.0	
2	2000.0	0.00	0.00	2000.0	0.0	0.0	0.00	0.00	0.0	
3	2442.1	11.05	125.07	2439.4	-24.4	34.8	2.50	125.07	38.4	
4	3660.1	11.05	125.07	3596.6	-147.6	216.2	2.50	190.00	243.3	
5	4902.2	0.00	0.00	4902.2	-172.0	245.0	0.00	0.00	249.3	
6	5902.2	0.00	0.00	5902.2	-165.3	89.50	8.00	89.50	502.7	
7	7409.3	85.00	89.50	7034.9	-165.6	973.5	0.00	0.00	977.3	
8	7484.3	85.00	89.50	7040.6	-165.1	1037.1	8.00	0.00	1041.0	
9	7548.1	90.10	89.50	7043.3	-129.2	5107.4	0.00	-69.21	5109.0	
10	1011618.5	90.10	89.49	7036.1						

Irene G30-63-1HN\_Plan A - Rev 0\_BHL Tgt-



WELL DETAILS: Irene G30-63-1HN (NAD83 Geodetic System)

Ground Level: 4802.0  
 Northing: 1345587.08  
 Easting: 3218515.43  
 Latitude: 40.279380  
 Longitude: -104.716920

Plan: Plan A - Rev 0 Proposal (Irene G30-63-1HN/Plan A - Rev 0 (PERMITTING PLAN ONLY))

Created By: Erika Cuauero Garcia Date: 11:08, October 21 2011