
WILLIAMS PRODUCTION RMT INC EBUSINE

**GM 344-27
GRAND VALLEY
Garfield County , Colorado**

Cement Surface Casing
11-Mar-2011

Post Job Report

The Road to Excellence Starts with Safety

Sold To #: 300721		Ship To #: 2840448		Quote #:		Sales Order #: 8010045	
Customer: WILLIAMS PRODUCTION RMT INC EBUSINE				Customer Rep: OLSEN, MIKE			
Well Name: GM			Well #: 344-27		API/UWI #: 05-045-19669		
Field: GRAND VALLEY		City (SAP): PARACHUTE		County/Parish: Garfield		State: Colorado	
Lat: N 39.493 deg. OR N 39 deg. 29 min. 35.542 secs.				Long: W 108.09 deg. OR W -109 deg. 54 min. 36.259 secs.			
Contractor: H&P 280			Rig/Platform Name/Num: H&P 280				
Job Purpose: Cement Surface Casing							
Well Type: Development Well			Job Type: Cement Surface Casing				
Sales Person: KOHL, KYLE			Srvc Supervisor: MUHLESTEIN, RYAN			MBU ID Emp #: 453609	

Job Personnel

HES Emp Name	Exp Hrs	Emp #	HES Emp Name	Exp Hrs	Emp #	HES Emp Name	Exp Hrs	Emp #
BROWN, TRAVIS A	7	396848	JENKINS, DEMON Lashaun	7	457892	MUHLESTEIN, RYAN Herrick	7	453609

Equipment

HES Unit #	Distance-1 way	HES Unit #	Distance-1 way	HES Unit #	Distance-1 way	HES Unit #	Distance-1 way
10713212	60 mile	10897849	60 mile	10951244	60 mile	11360881	60 mile
11542767	60 mile						

Job Hours

Date	On Location Hours	Operating Hours	Date	On Location Hours	Operating Hours	Date	On Location Hours	Operating Hours
03/11/2011	7	3						

TOTAL Total is the sum of each column separately

Job

Formation Name	Top	Bottom	Called Out	Date	Time	Time Zone
Formation Depth (MD)			On Location	11 - Mar - 2011	04:30	MST
Form Type	BHST		Job Started	11 - Mar - 2011	09:52	MST
Job depth MD	1031. ft	Job Depth TVD	1031. ft	Job Completed	11 - Mar - 2011	00:00
Water Depth		Wk Ht Above Floor	4. ft	Departed Loc	11 - Mar - 2011	11:30
Perforation Depth (MD)	From	To				

Well Data

Description	New / Used	Max pressure psig	Size in	ID in	Weight lbm/ft	Thread	Grade	Top MD ft	Bottom MD ft	Top TVD ft	Bottom TVD ft
OPEN HOLE				13.5				.	1031.	.	1031.
SURFACE CASING	Unknown		9.625	9.001	32.3		H-40	.	981.	.	981.

Sales/Rental/3rd Party (HES)

Description	Qty	Qty uom	Depth	Supplier
PLUG,CMTG,TOP,9 5/8,HWE,8.16 MIN/9.06 MA	1	EA		

Tools and Accessories

Type	Size	Qty	Make	Depth	Type	Size	Qty	Make	Depth	Type	Size	Qty	Make
Guide Shoe					Packer					Top Plug			
Float Shoe					Bridge Plug					Bottom Plug			
Float Collar					Retainer					SSR plug set			
Insert Float										Plug Container			
Stage Tool										Centralizers			

Miscellaneous Materials

Gelling Agt	Conc	Surfactant	Conc	Acid Type	Qty	Conc	%
Treatment Fld	Conc	Inhibitor	Conc	Sand Type	Size	Qty	

Fluid Data										
Stage/Plug #: 1										
Fluid #	Stage Type	Fluid Name	Qty	Qty uom	Mixing Density lbm/gal	Yield ft ³ /sk	Mix Fluid Gal/sk	Rate bbl/min	Total Mix Fluid Gal/sk	
1	Water Spacer		20.00	bbl	8.4	.0	.0	6.0		
2	Lead Cement	VERSACEM (TM) SYSTEM (452010)	140.0	sacks	12.3	2.38	13.75	8.0	13.75	
3	Tail Cement	VERSACEM (TM) SYSTEM (452010)	160.0	sacks	12.8	2.11	11.75	6.0	11.75	
4	Displacement Fluid		74.00	bbl	8.4	.0	.0	10.0		
Calculated Values		Pressures		Volumes						
Displacement	74	Shut In: Instant		Lost Returns	0	Cement Slurry	119.4	Pad		
Top Of Cement	SURFACE	5 Min		Cement Returns	31	Actual Displacement	74	Treatment		
Frac Gradient		15 Min		Spacers	20	Load and Breakdown		Total Job	213.4	
Rates										
Circulating	11	Mixing	8	Displacement	10	Avg. Job		9		
Cement Left In Pipe	Amount	41 ft	Reason	Shoe Joint						
Frac Ring # 1 @	ID	Frac ring # 2 @	ID	Frac Ring # 3 @	ID	Frac Ring # 4 @	ID			
The Information Stated Herein Is Correct				Customer Representative Signature						

The Road to Excellence Starts with Safety

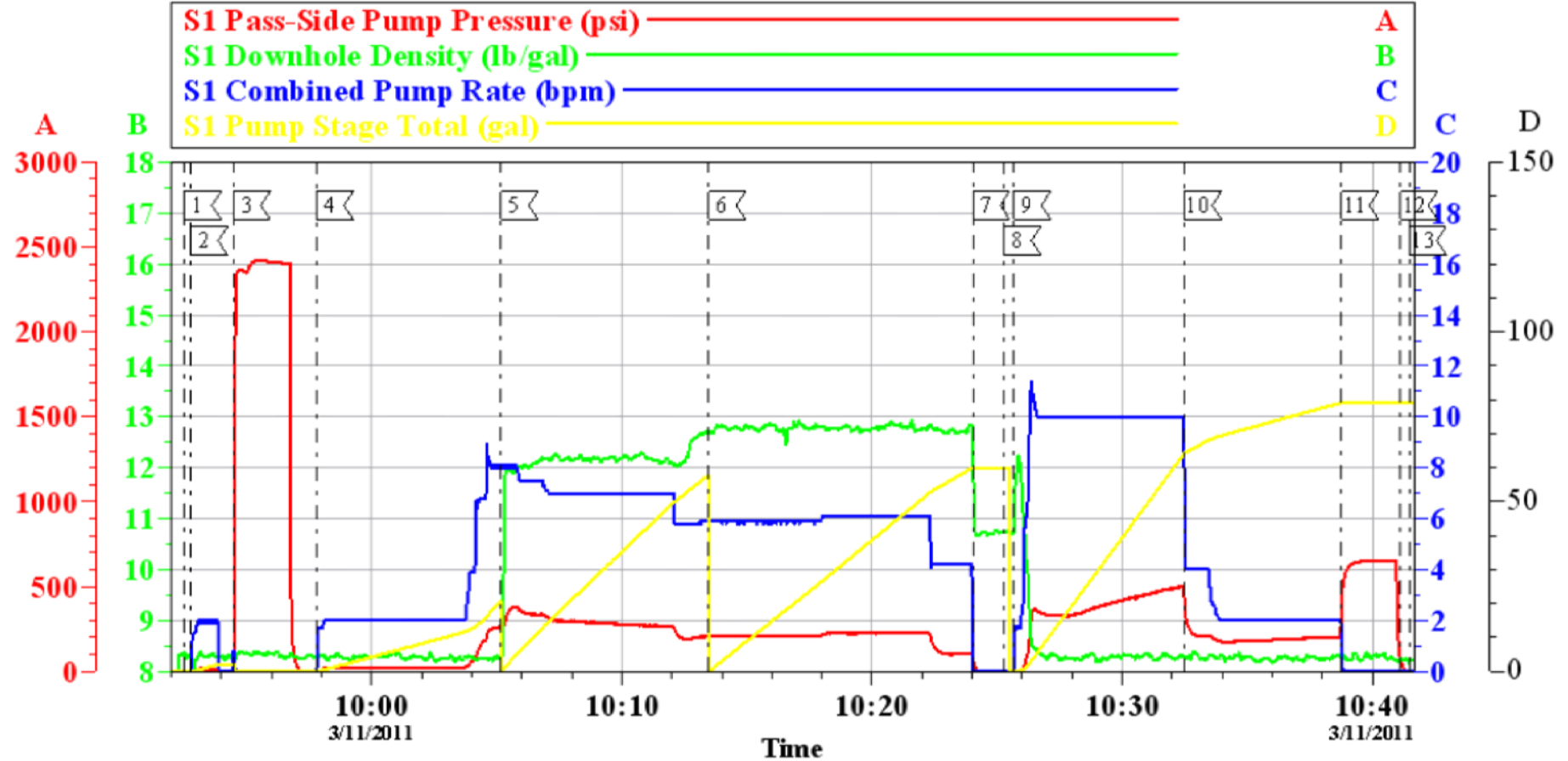
Sold To #: 300721	Ship To #: 2840448	Quote #:	Sales Order #: 8010045
Customer: WILLIAMS PRODUCTION RMT INC EBUSINE		Customer Rep: OLSEN, MIKE	
Well Name: GM	Well #: 344-27	API/UWI #: 05-045-19669	
Field: GRAND VALLEY	City (SAP): PARACHUTE	County/Parish: Garfield	State: Colorado
Legal Description:			
Lat: N 39.493 deg. OR N 39 deg. 29 min. 35.542 secs.		Long: W 108.09 deg. OR W -109 deg. 54 min. 36.259 secs.	
Contractor: H&P 280		Rig/Platform Name/Num: H&P 280	
Job Purpose: Cement Surface Casing			Ticket Amount:
Well Type: Development Well		Job Type: Cement Surface Casing	
Sales Person: KOHL, KYLE		Srvc Supervisor: MUHLESTEIN, RYAN	MBU ID Emp #: 453609

Activity Description	Date/Time	Cht #	Rate bbl/min	Volume bbl		Pressure psig		Comments
				Stage	Total	Tubing	Casing	
Call Out	03/10/2011 22:30							
Pre-Convoy Safety Meeting	03/11/2011 00:15							WITH ALL HES PERSONNEL SAFE DRIVING PRACTICES AND TRAVEL ROUTE REVIEWED
Arrive at Location from Service Center	03/11/2011 04:30							RIG STILL RUNNING CASING
Assessment Of Location Safety Meeting	03/11/2011 04:35							WITH ALL HES PERSONNEL
Other	03/11/2011 04:45							SPOT EQUIPMENT
Pre-Rig Up Safety Meeting	03/11/2011 04:55							WITH ALL HES PERSONNEL
Rig-Up Equipment	03/11/2011 05:00							1 HT 400 PUMP, 1 660 BULK TRUCK, 1 F-450 PICK-UP, 1 PLUG CONTAINER, 2" IRON TO STAND PIPE
Pre-Job Safety Meeting	03/11/2011 09:30							WITH ALL HES PERSONNEL, RIG CREW AND CO REP
Start Job	03/11/2011 09:52							TD 1031', TP 981', FC 940', SJ 41', CASING 9.625" 32.3# H-40, 13.5" HOLE, MUD REPORT 10.3 PPG PV 36, YP 30. RIG CIRC. 30 MINS PRIOR TO CMT JOB, 11 BPM, 230 PSI.
Pump Water	03/11/2011 09:53		2	2			37.0	FRESH H2O,
Test Lines	03/11/2011 09:54						2425.0	HELD PRESSURE 2 MIN NO LEAKS

Activity Description	Date/Time	Cht #	Rate bbl/min	Volume bbl		Pressure psig		Comments
				Stage	Total	Tubing	Casing	
Pump Spacer 1	03/11/2011 09:57		6	20			318.0	FRESH H2O
Pump Lead Cement	03/11/2011 10:05		8	59.3			375.0	140 SKS 12.3 PPG 2.38 FT3/SK 13.75 GAL/SK WEIGHED VERIFIED VIA MUD SCALES WET AND DRY SAMPLES SUBMITTED
Pump Tail Cement	03/11/2011 10:13		6	60.1			240.0	160 SKS 12.8 PPG 2.11 FT3/SK 11.75 GAL/SK WEIGHED VERIFIED VIA MUD SCALES WET AND DRY SAMPLES SUBMITTED
Shutdown	03/11/2011 10:24							SHUT DOWN
Drop Top Plug	03/11/2011 10:25							VERIFY PLUG LAUNCHED
Pump Displacement	03/11/2011 10:26		10	74			510.0	CMT RETURNS 44 BBLS INTO DIS, 30 BBLS TO SURFACE
Slow Rate	03/11/2011 10:32		2	64			177.0	SLOW RATE 10 BBLS PRIOR TO CALCULATED DISPLACEMENT
Bump Plug	03/11/2011 10:35		2	74			652.0	BUMP PLUG AT 220 PSI HOLD 2 MINS
Check Floats	03/11/2011 10:38							FLOATS HOLDING, GOOD RETURNS THROUGHOUT JOB
End Job	03/11/2011 10:41							CREW REQ. ON LOC AT 0430 BUMP PLUG AT . NO ADD HOURS OR DERRICK CHARGE. 100 LBS SUGAR USED
Pre-Rig Down Safety Meeting	03/11/2011 10:45							WITH ALL HES PERSONNEL
Rig-Down Equipment	03/11/2011 11:00							
Pre-Convoy Safety Meeting	03/11/2011 11:25							WITH ALL HES PERSONNEL
Crew Leave Location	03/11/2011 11:30							THANK YOU FOR USING HALLIBURTON CEMENT DEPARTMENT. RYAN MUHLESTEIN AND CREW

WILLIAMS

GM 344-27 9 5/8" SURFACE CASING



Local Event Log			
1	STARTJOB	09:52:31	2
2	FILL LINES	09:52:45	3
3	TEST LINES	09:54:28	4
4	PUMP H2O SPACER	09:57:48	5
5	PUMP LEAD CMT	10:05:10	6
6	PUMP TAIL CMT	10:13:29	7
7	SHUTDOWN	10:24:02	8
8	DROP PLUG	10:25:17	9
9	PUMP DISPLACEMENT	10:25:40	10
10	SLOW RATE	10:32:29	11
11	CHECK FLOATS	10:38:47	12
12	BUMP PLUG	10:41:08	13
13	END JOB	10:41:28	

Customer: WILLIAMS	Job Date: 11-Mar-2011	Sales Order #: 8010045	OptiCem v6.4.6 11-Mar-11 10:45
Well Description: GM 344-27	Job type: SURFACE	ADC Used: YES	
Customer Rep: MIKE OLSEN	Service Supervisor: RYAN MUHLESTEIN	Operator/ Pump: ELITE 1	