

Bill Barrett Corp.

Garfield County, Colorado [NAD83]

Kaufman 7 Pad

Kaufman 23C-24-692

Wellbore #1

Design: Wellbore #1

Standard Survey Report

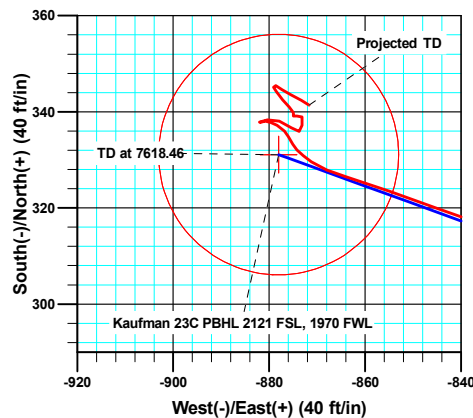
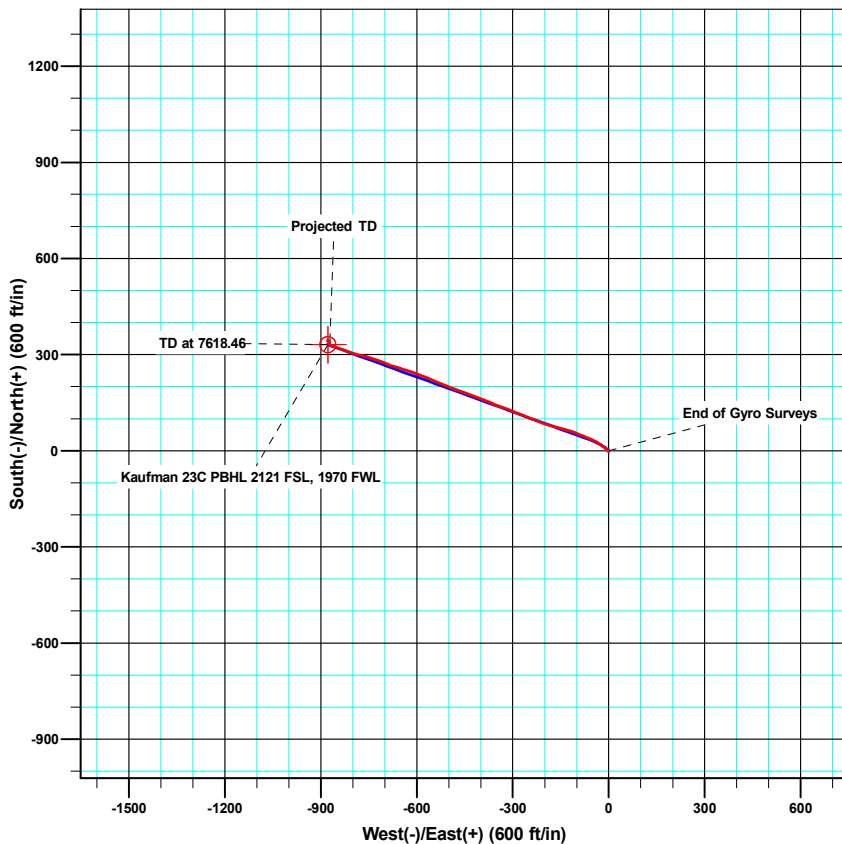
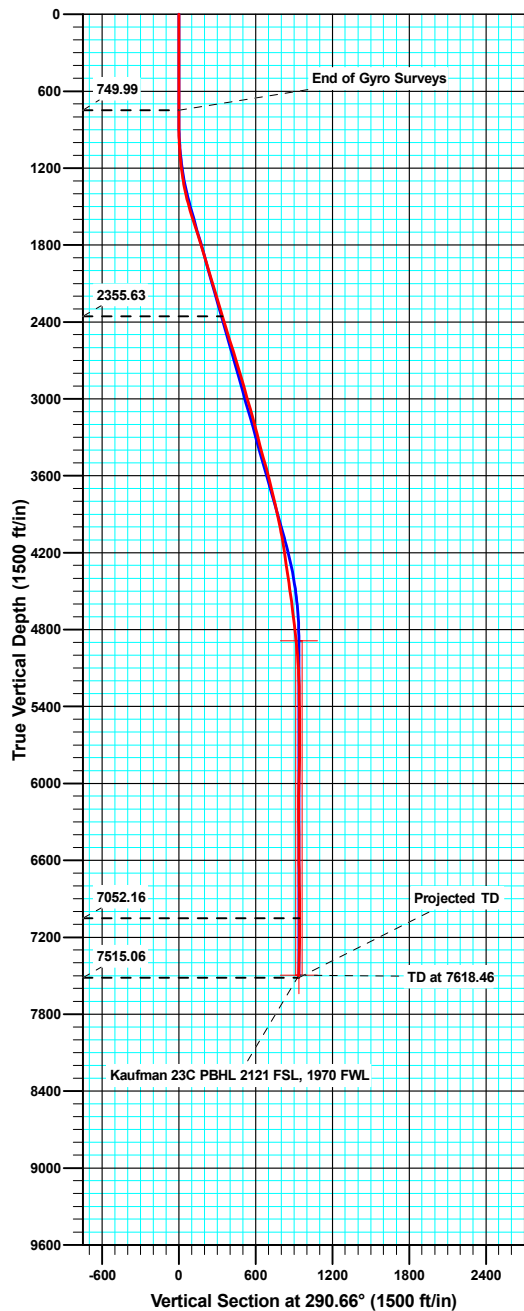
02 August, 2011

Well Details: Kaufman 23C-24-692

Ground Level: 5843.00



North American Datum 1983 , US State Plane 1983 , Colorado Central Zone
 +N/-S +E/-W Northing Easting Latitude Longitude
 0.00 0.00 1617744.30 2403389.90 39.510422 -107.614760



Azimuths to True North
 Magnetic North: 10.20°

Magnetic Field
 Strength: 52320.6snT
 Dip Angle: 65.83°
 Date: 05/03/2011
 Model: IGRF2010

ANNOTATIONS

TVD	MD	Inc	Azi	+N/-S	+E/-W	VSect	Departure	Annotation
749.99	750.00	0.11	309.16	-0.43	0.00	-0.15	2.75	End of Gyro Surveys
2355.63	2402.00	17.10	292.40	129.14	-315.49	340.77	346.52	As of July 31
7052.16	7170.00	0.90	333.70	345.15	-879.04	944.29	976.43	As of August 1
7515.06	7633.00	1.30	121.90	341.40	-871.67	936.07	986.09	Projected TD



Sharewell Survey Report

Company: Bill Barrett Corp.	Local Co-ordinate Reference: Well Kaufman 23C-24-692
Project: Garfield County, Colorado [NAD83]	TVD Reference: KB @ 5866.00ft
Site: Kaufman 7 Pad	MD Reference: KB @ 5866.00ft
Well: Kaufman 23C-24-692	North Reference: True
Wellbore: Wellbore #1	Survey Calculation Method: Minimum Curvature
Design: Wellbore #1	Database: Compass VM

Project Garfield County, Colorado [NAD83]		
Map System: US State Plane 1983	System Datum:	Mean Sea Level
Geo Datum: North American Datum 1983		
Map Zone: Colorado Central Zone		

Site Kaufman 7 Pad					
Site Position:		Northing:	1,617,736.60 usft	Latitude:	39.510401
From: Lat/Long		Easting:	2,403,391.98 usft	Longitude:	-107.614752
Position Uncertainty:	0.00 ft	Slot Radius:	1.10 ft	Grid Convergence:	-1.33 °

Well Kaufman 23C-24-692						
Well Position	+N/-S	0.00 ft	Northing:	1,617,744.29 usft	Latitude:	39.510422
	+E/-W	0.00 ft	Easting:	2,403,389.90 usft	Longitude:	-107.614760
Position Uncertainty		0.00 ft	Wellhead Elevation:	ft	Ground Level:	5,843.00 ft

Wellbore Wellbore #1					
Magnetics	Model Name	Sample Date	Declination (°)	Dip Angle (°)	Field Strength (nT)
	IGRF2010	05/03/11	10.20	65.83	52,321

Design Wellbore #1					
Audit Notes:					
Version:	1.0	Phase:	ACTUAL	Tie On Depth:	0.00
Vertical Section:	Depth From (TVD) (ft)	+N/-S (ft)	+E/-W (ft)	Direction (°)	
	0.00	0.00	0.00	290.66	

Survey Program		Date 08/02/11
From (ft)	To (ft)	Survey (Wellbore)
100.00	750.00	Gyro Surveys (Wellbore #1)
884.00	7,633.00	MWD Survey (Wellbore #1)
		Tool Name
		MWD
		Description
		MWD - Standard
		MWD - Standard

Survey										
Measured Depth (ft)	Inclination (°)	Azimuth (°)	Vertical Depth (ft)	+N/-S (ft)	+E/-W (ft)	Vertical Section (ft)	Dogleg Rate (°/100ft)	Build Rate (°/100ft)	Turn Rate (°/100ft)	
0.00	0.00	0.00	0.00	0.00	0.00	0.00	0.00	0.00	0.00	
100.00	0.23	153.71	100.00	-0.18	0.09	-0.15	0.23	0.23	0.00	
200.00	0.28	153.64	200.00	-0.58	0.29	-0.47	0.05	0.05	-0.07	
300.00	0.14	211.34	300.00	-0.90	0.33	-0.63	0.24	-0.14	57.70	
400.00	0.21	204.88	400.00	-1.17	0.19	-0.59	0.07	0.07	-6.46	
500.00	0.09	250.85	500.00	-1.36	0.04	-0.52	0.16	-0.12	45.97	
600.00	0.18	321.38	600.00	-1.27	-0.13	-0.32	0.17	0.09	70.53	
700.00	0.56	21.28	700.00	-0.69	-0.05	-0.19	0.49	0.38	59.90	
750.00	0.11	309.16	749.99	-0.43	0.00	-0.15	1.07	-0.90	-144.24	
884.00	0.30	232.90	883.99	-0.56	-0.38	0.16	0.22	0.14	-56.91	

Sharewell

Survey Report

Company:	Bill Barrett Corp.	Local Co-ordinate Reference:	Well Kaufman 23C-24-692
Project:	Garfield County, Colorado [NAD83]	TVD Reference:	KB @ 5866.00ft
Site:	Kaufman 7 Pad	MD Reference:	KB @ 5866.00ft
Well:	Kaufman 23C-24-692	North Reference:	True
Wellbore:	Wellbore #1	Survey Calculation Method:	Minimum Curvature
Design:	Wellbore #1	Database:	Compass VM

Survey									
Measured Depth (ft)	Inclination (°)	Azimuth (°)	Vertical Depth (ft)	+N/-S (ft)	+E/-W (ft)	Vertical Section (ft)	Dogleg Rate (°/100ft)	Build Rate (°/100ft)	Turn Rate (°/100ft)
977.00	2.30	309.60	976.97	0.48	-2.01	2.05	2.42	2.15	82.47
1,069.00	4.50	306.50	1,068.80	3.80	-6.34	7.27	2.40	2.39	-3.37
1,161.00	6.40	312.10	1,160.38	9.39	-13.04	15.52	2.14	2.07	6.09
1,256.00	8.50	307.60	1,254.57	17.22	-22.54	27.16	2.29	2.21	-4.74
1,352.00	11.30	300.40	1,349.14	26.31	-36.27	43.23	3.18	2.92	-7.50
1,447.00	14.20	292.10	1,441.79	35.41	-55.10	64.05	3.60	3.05	-8.74
1,543.00	17.10	293.60	1,534.23	45.49	-78.95	89.93	3.05	3.02	1.56
1,638.00	18.20	290.60	1,624.75	56.31	-105.64	118.71	1.50	1.16	-3.16
1,734.00	17.60	283.90	1,716.12	65.07	-133.76	148.12	2.23	-0.63	-6.98
1,829.00	17.00	285.30	1,806.82	72.18	-161.10	176.21	0.77	-0.63	1.47
1,925.00	16.20	286.60	1,898.82	79.71	-187.47	203.54	0.92	-0.83	1.35
2,020.00	16.30	292.20	1,990.03	88.54	-212.52	230.09	1.65	0.11	5.89
2,115.00	16.90	289.50	2,081.07	98.18	-237.88	257.22	1.03	0.63	-2.84
2,211.00	16.80	293.60	2,172.95	108.40	-263.75	285.03	1.24	-0.10	4.27
2,306.00	17.00	290.70	2,263.85	118.80	-289.32	312.63	0.91	0.21	-3.05
2,402.00	17.10	292.40	2,355.63	129.14	-315.49	340.77	0.53	0.10	1.77
2,497.00	17.40	289.30	2,446.36	139.16	-341.81	368.93	1.02	0.32	-3.26
2,593.00	16.60	292.00	2,538.17	149.04	-368.08	396.99	1.17	-0.83	2.81
2,688.00	17.10	292.20	2,629.09	159.40	-393.59	424.52	0.53	0.53	0.21
2,783.00	16.90	290.90	2,719.94	169.60	-419.42	452.29	0.45	-0.21	-1.37
2,879.00	16.90	290.00	2,811.79	179.35	-445.57	480.20	0.27	0.00	-0.94
2,974.00	16.30	288.60	2,902.83	188.33	-471.18	507.33	0.76	-0.63	-1.47
3,069.00	16.00	292.50	2,994.08	197.59	-495.91	533.74	1.18	-0.32	4.11
3,165.00	16.10	291.90	3,086.34	207.62	-520.49	560.27	0.20	0.10	-0.63
3,260.00	15.50	292.70	3,177.75	217.43	-544.42	586.12	0.67	-0.63	0.84
3,356.00	14.20	292.50	3,270.54	226.89	-567.13	610.71	1.36	-1.35	-0.21
3,451.00	14.50	290.70	3,362.58	235.55	-589.02	634.25	0.57	0.32	-1.89
3,546.00	15.80	289.30	3,454.28	244.03	-612.36	659.08	1.42	1.37	-1.47
3,642.00	15.20	288.10	3,546.79	252.26	-636.65	684.71	0.71	-0.63	-1.25
3,737.00	13.00	284.80	3,638.92	258.86	-658.83	707.79	2.46	-2.32	-3.47
3,833.00	13.80	291.10	3,732.31	265.74	-679.95	729.98	1.73	0.83	6.56
3,928.00	12.80	292.30	3,824.76	273.81	-700.26	751.83	1.09	-1.05	1.26
4,023.00	12.40	290.70	3,917.47	281.41	-719.53	772.55	0.56	-0.42	-1.68
4,119.00	11.90	287.20	4,011.32	287.98	-738.63	792.74	0.93	-0.52	-3.65
4,214.00	9.80	285.20	4,104.62	293.00	-755.79	810.56	2.25	-2.21	-2.11
4,310.00	8.60	280.80	4,199.39	296.48	-770.73	825.77	1.45	-1.25	-4.58
4,405.00	7.60	281.90	4,293.44	299.11	-783.85	838.98	1.07	-1.05	1.16
4,501.00	9.00	289.50	4,388.43	302.93	-797.14	852.76	1.85	1.46	7.92
4,596.00	7.90	289.20	4,482.40	307.55	-810.31	866.72	1.16	-1.16	-0.32
4,691.00	7.30	291.20	4,576.56	311.88	-822.11	879.28	0.69	-0.63	2.11
4,787.00	7.30	287.80	4,671.79	315.95	-833.60	891.47	0.45	0.00	-3.54
4,882.00	6.90	290.70	4,766.06	319.82	-844.69	903.20	0.57	-0.42	3.05
4,978.00	6.10	288.70	4,861.44	323.49	-854.91	914.07	0.87	-0.83	-2.08

Sharewell

Survey Report

Company: Bill Barrett Corp.	Local Co-ordinate Reference: Well Kaufman 23C-24-692
Project: Garfield County, Colorado [NAD83]	TVD Reference: KB @ 5866.00ft
Site: Kaufman 7 Pad	MD Reference: KB @ 5866.00ft
Well: Kaufman 23C-24-692	North Reference: True
Wellbore: Wellbore #1	Survey Calculation Method: Minimum Curvature
Design: Wellbore #1	Database: Compass VM

Survey										
Measured Depth (ft)	Inclination (°)	Azimuth (°)	Vertical Depth (ft)	+N/-S (ft)	+E/-W (ft)	Vertical Section (ft)	Dogleg Rate (°/100ft)	Build Rate (°/100ft)	Turn Rate (°/100ft)	
5,073.00	5.40	287.40	4,955.96	326.45	-863.96	923.57	0.75	-0.74	-1.37	
5,169.00	4.10	302.30	5,051.63	329.63	-871.17	931.45	1.86	-1.35	15.52	
5,264.00	2.50	331.10	5,146.48	333.26	-875.04	936.35	2.38	-1.68	30.32	
5,359.00	1.50	320.50	5,241.42	336.03	-876.83	939.01	1.12	-1.05	-11.16	
5,454.00	0.90	286.50	5,336.40	337.20	-878.34	940.83	0.95	-0.63	-35.79	
5,550.00	0.90	301.20	5,432.39	337.81	-879.71	942.32	0.24	0.00	15.31	
5,645.00	0.60	257.30	5,527.38	338.09	-880.83	943.47	0.66	-0.32	-46.21	
5,740.00	0.70	251.40	5,622.38	337.79	-881.87	944.34	0.13	0.11	-6.21	
5,836.00	0.60	61.60	5,718.37	337.84	-881.98	944.46	1.35	-0.10	177.29	
5,931.00	1.50	78.00	5,813.36	338.34	-880.33	943.09	0.99	0.95	17.26	
6,027.00	1.60	114.30	5,909.32	338.05	-877.88	940.69	1.01	0.10	37.81	
6,122.00	1.90	122.70	6,004.28	336.65	-875.34	937.83	0.41	0.32	8.84	
6,218.00	0.40	63.40	6,100.26	335.94	-873.70	936.04	1.80	-1.56	-61.77	
6,313.00	1.40	13.50	6,195.25	337.22	-873.14	935.96	1.24	1.05	-52.53	
6,408.00	0.80	334.30	6,290.23	338.95	-873.15	936.59	0.98	-0.63	-41.26	
6,504.00	1.00	239.90	6,386.22	339.13	-874.17	937.60	1.38	0.21	-98.33	
6,599.00	0.50	359.60	6,481.22	339.13	-874.89	938.28	1.39	-0.53	126.00	
6,694.00	0.30	351.50	6,576.22	339.79	-874.93	938.55	0.22	-0.21	-8.53	
6,790.00	1.50	318.00	6,672.20	340.97	-875.81	939.79	1.31	1.25	-34.90	
6,885.00	1.00	320.90	6,767.18	342.54	-877.16	941.61	0.53	-0.53	3.05	
6,980.00	0.60	323.90	6,862.17	343.58	-877.98	942.74	0.42	-0.42	3.16	
7,075.00	0.40	318.20	6,957.17	344.23	-878.49	943.45	0.22	-0.21	-6.00	
7,170.00	0.90	333.70	7,052.16	345.15	-879.04	944.29	0.55	0.53	16.32	
7,266.00	1.00	116.70	7,148.15	345.45	-878.63	944.01	1.88	0.10	148.96	
7,361.00	0.90	127.70	7,243.14	344.62	-877.30	942.47	0.22	-0.11	11.58	
7,456.00	1.70	115.50	7,338.12	343.56	-875.44	940.35	0.89	0.84	-12.84	
7,551.00	1.30	121.90	7,433.08	342.38	-873.25	937.89	0.46	-0.42	6.74	
7,633.00	1.30	121.90	7,515.06	341.40	-871.67	936.07	0.00	0.00	0.00	

Design Annotations					
Measured Depth (ft)	Vertical Depth (ft)	Local Coordinates		Comment	
		+N/-S (ft)	+E/-W (ft)		
750.00	749.99	-0.43	0.00	End of Gyro Surveys	
2,402.00	2,355.63	129.14	-315.49	As of July 31	
7,170.00	7,052.16	345.15	-879.04	As of August 1	
7,633.00	7,515.06	341.40	-871.67	Projected TD	

Checked By: _____ Approved By: _____ Date: _____