

1625 Broadway
Suite 2000
Denver, CO 80202

Tel: 303.228.4000
Fax: 303.228.4280
www.nobleenergyinc.com



November 17, 2011

Colorado Oil and Gas Conservation Commission
The Chancery Building
1120 Lincoln Street, Suite 801
Denver, CO 80203

Attn: Mr. David Neslin, Director

RE: 70 Ranch BB25-68HN
Niobrara New Drill
Township 5 North, Range 63 West, 6th P.M.
Section 25: NW/4NW/4: 509' FNL & 453' FWL (Surface Location)
Section 25: NE/4NW/4: 504' FNL & 1256' FWL (Beginning of Lateral)
Section 25: NE/4NE/4: 600' FNL & 535' FEL (Bottom Hole Location)
Weld County, Colorado

Mr. Neslin:

Noble Energy, Inc. ("NEI") is planning to drill the captioned boundary well in accordance with the provisions of COGCC Rule 318A.e.

NEI's proposed wellbore spacing unit consists of the N/2N/2, Sec. 25, T5N, R63W, creating a 160-acre wellbore spacing unit for the Niobrara formation. NEI is the only owner within the proposed wellbore spacing unit, therefore NEI hereby attests that no notice letters are required under COGCC Rule 318A(l).e.(6).

Enclosed are copies of the following documents to assist you in your review and approval of NEI's proposed APD for the captioned well:

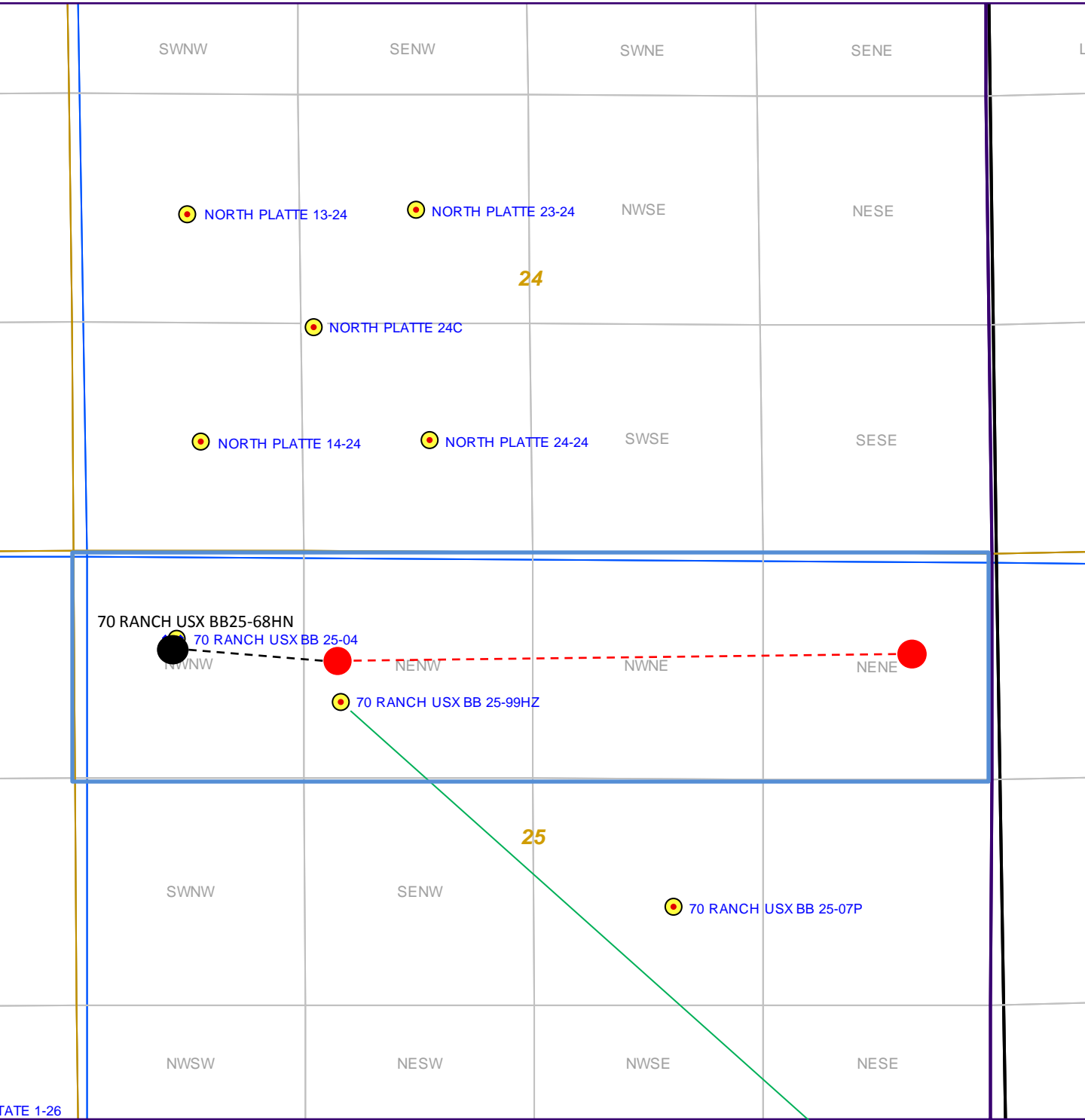
- Map & plat illustrating proposed wellbore spacing unit.

Thank you for your attention to the enclosed. NEI respectfully requests that the COGCC review the enclosed information and approve the Application for Permit to Drill the captioned well.

Sincerely,

Justin Garrett
Regulatory Specialist
Noble Energy Inc.

70 RANCH USX BB25-68HN
Noble Energy, Inc
N/2N/2 of Section 25, Township 5 North, Range 63 West



DATE 1-26

Legend



Proposed 160 acre spacing unit

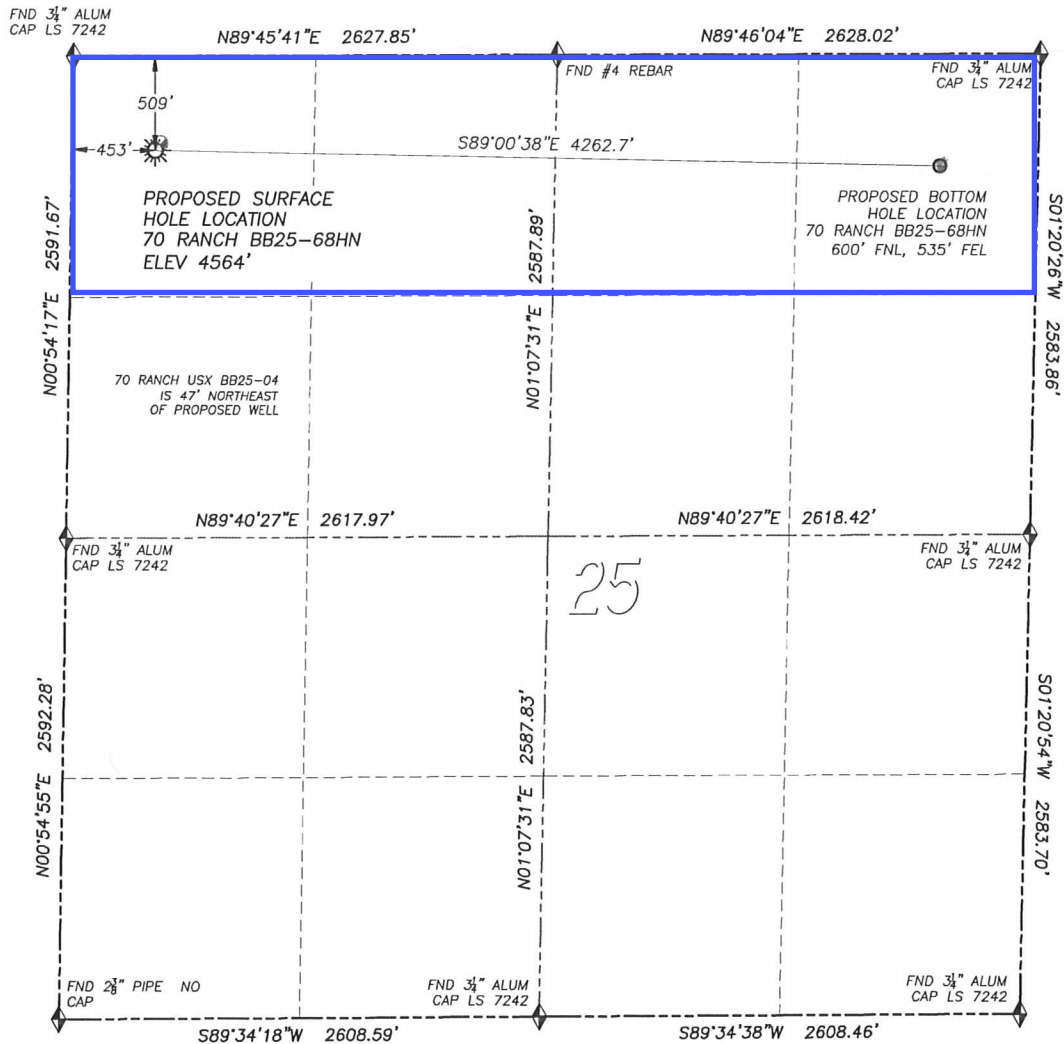


Proposed Bottom Hole Location

WELL LOCATION CERTIFICATE

70 RANCH BB25-68HN

SECTION 25, TOWNSHIP 5 NORTH, RANGE 63 WEST OF THE 6TH PRINCIPAL MERIDIAN



0 500 1000
SCALE: 1" = 1000'

LEGEND

- ◆ FOUND MONUMENT AS DESCRIBED
- ☀ PROPOSED HOLE
- EXISTING WELL
- BOTTOM HOLE
- ⊗ ABANDONED WELL

NAD 83 LATITUDE AND LONGITUDE**70 RANCH BB25-68HN SURFACE HOLE:**

LATITUDE: N40.37601°
LONGITUDE: W104.39203°
ELEVATION: 4564'
FOOTAGE: 509' FNL, 453' FWL
PDOP: 1.7
QTR/QTR: NW4/NW4
PROP LINE: 453'± WEST

BOTTOM HOLE:

LATITUDE: N40.37580°
LONGITUDE: W104.37674°
FOOTAGE: 600' FNL, 535' FEL

NEAREST EXISTING WELL:

70 RANCH USX BB25-04 SURFACE HOLE
LATITUDE: N40.37611°
LONGITUDE: W104.39193°
ELEVATION: 4564'
47' NORTHEAST

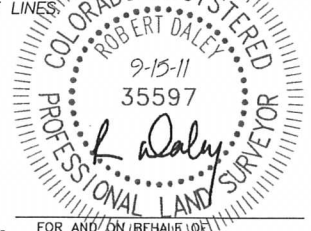
IN ACCORDANCE WITH A REQUEST FROM SCOTT LEWIS OF NOBLE ENERGY INC., DALEY LAND SURVEYING, INC. HAS DETERMINED THE SURFACE LOCATION OF THE 70 RANCH BB25-68HN WELL TO BE 509' FNL, 453' FWL, AS MEASURED AT NINETY (90) DEGREES FROM THE SECTION LINES OF SECTION 25, TOWNSHIP 5 NORTH, RANGE 63 WEST OF THE 6TH PRINCIPAL MERIDIAN, WELD COUNTY, COLORADO. THE BOTTOM HOLE LOCATION, PROVIDED BY THE CLIENT, IS TO BE 600' FNL, 535' FEL.

I HEREBY CERTIFY THAT THIS WELL LOCATION CERTIFICATE WAS PREPARED BY ME OR UNDER MY DIRECT SUPERVISION, THAT THE WORK WAS COMPLETED ON 9/13/2011 FOR AND ON BEHALF OF NOBLE ENERGY, INC., AND THAT THIS MAP DOES NOT REPRESENT A BOUNDARY SURVEY, IT IS NOT A LAND SURVEY PLAT OR AN IMPROVEMENT SURVEY PLAT AND IT IS NOT TO BE RELIED UPON FOR THE ESTABLISHMENT OF FENCE, BUILDING OR OTHER FUTURE IMPROVEMENT LINES.

NOTES:

- 1) BEARINGS FOR THIS MAP ARE ASSUMED AND BASED UPON GPS OBSERVATIONS MADE BETWEEN MONUMENTS LOCATED AT THE NORTHWEST CORNER AND WEST QUARTER CORNER OF SECTION 25, T.5N., R.63W.
- 2) HORIZONTAL DATUM IS NAD83.
- 3) VERTICAL DATUM IS NAVD88 AND ORIGINATES FROM THE LOCAL C.O.R.S. NETWORK, UTILIZING THE GEOID09 MODEL.
- 4) SEE LOCATION DRAWING FOR VISIBLE IMPROVEMENTS WITHIN 400' OF PROPOSED DISTURBED AREA.
- 5) SURFACE USE: PASTURE.

NOTICE: According to Colorado law you MUST commence any legal action based upon any defect in this W.L.C. within three years after you first discover such defect. In no event may any action based upon any such defect in this W.L.C. be commenced more than ten years from the date of the certification shown herein.



FOR AND ON BEHALF OF
DALEY LAND SURVEYING INC.
Robert Daley, PLS 35597