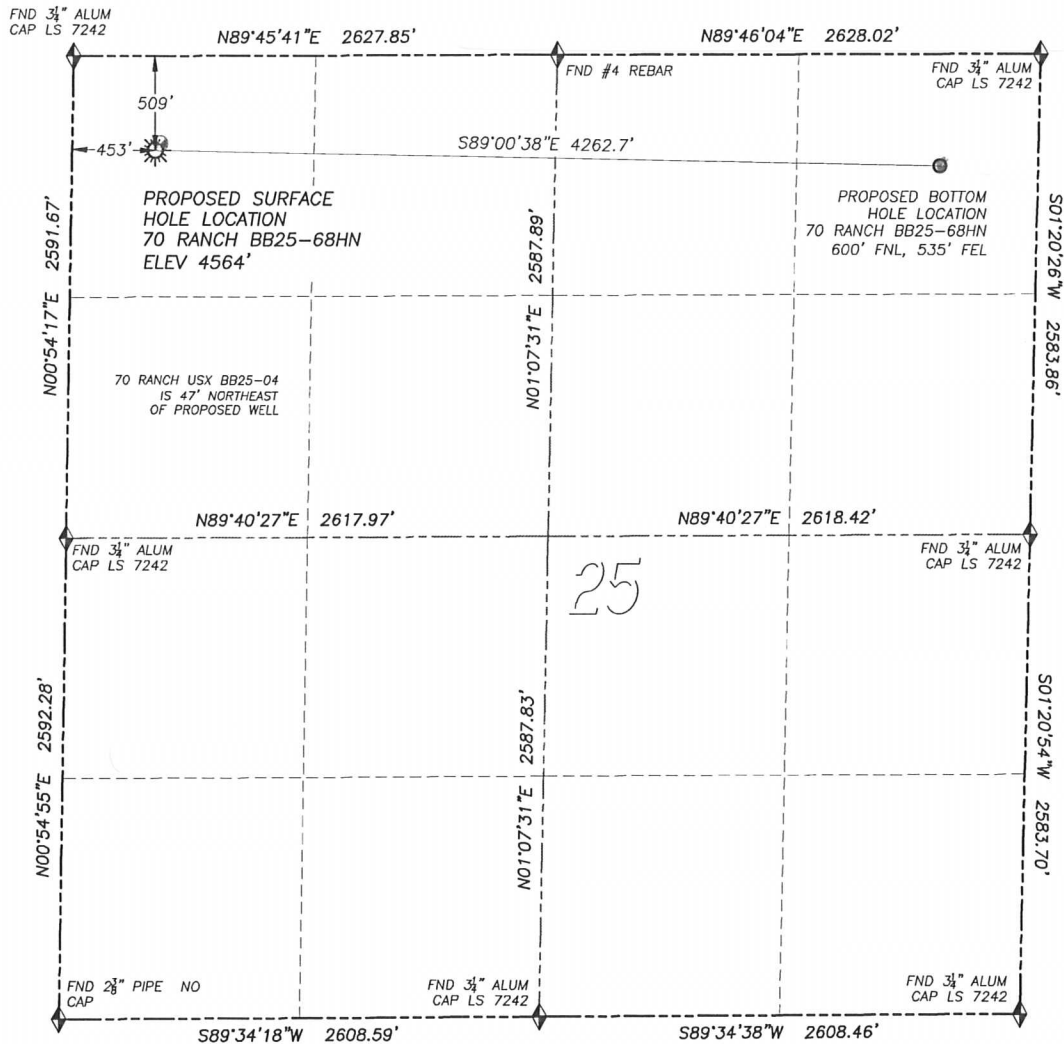


WELL LOCATION CERTIFICATE

70 RANCH BB25-68HN

SECTION 25, TOWNSHIP 5 NORTH, RANGE 63 WEST OF THE 6TH PRINCIPAL MERIDIAN



0 500 1000
SCALE: 1" = 1000'

LEGEND

- ◆ FOUND MONUMENT AS DESCRIBED
- ☀ PROPOSED WELL
- EXISTING WELL
- BOTTOM HOLE
- ⊗ ABANDONED WELL

NAD 83 LATITUDE AND LONGITUDE**70 RANCH BB25-68HN SURFACE HOLE:**

LATITUDE: N40.37601°
LONGITUDE: W104.39203°
ELEVATION: 4564'
FOOTAGE: 509' FNL, 453' FWL
PDOP: 1.7
QTR/QTR: NW4/NW4
PROP LINE: 453'± WEST

BOTTOM HOLE:

LATITUDE: N40.37580°
LONGITUDE: W104.37674°
FOOTAGE: 600' FNL, 535' FEL

NEAREST EXISTING WELL:

70 RANCH USX BB25-04 SURFACE HOLE
LATITUDE: N40.37611°
LONGITUDE: W104.39193°
ELEVATION: 4564'
47' NORTHEAST

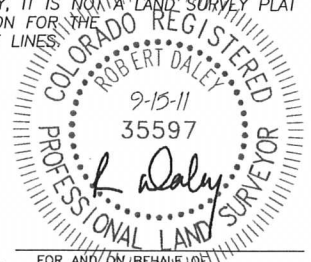
IN ACCORDANCE WITH A REQUEST FROM SCOTT LEWIS OF NOBLE ENERGY INC., DALEY LAND SURVEYING, INC. HAS DETERMINED THE SURFACE LOCATION OF THE 70 RANCH BB25-68HN WELL TO BE 509' FNL, 453' FWL, AS MEASURED AT NINETY (90) DEGREES FROM THE SECTION LINES OF SECTION 25, TOWNSHIP 5 NORTH, RANGE 63 WEST OF THE 6TH PRINCIPAL MERIDIAN, WELD COUNTY, COLORADO. THE BOTTOM HOLE LOCATION, PROVIDED BY THE CLIENT, IS TO BE 600' FNL, 535' FEL.

I HEREBY CERTIFY THAT THIS WELL LOCATION CERTIFICATE WAS PREPARED BY ME OR UNDER MY DIRECT SUPERVISION, THAT THE WORK WAS COMPLETED ON 9/13/2011 FOR AND ON BEHALF OF NOBLE ENERGY, INC., AND THAT THIS MAP DOES NOT REPRESENT A BOUNDARY SURVEY, IT IS NOT A LAND SURVEY PLAT OR AN IMPROVEMENT SURVEY PLAT AND IT IS NOT TO BE RELIED UPON FOR THE ESTABLISHMENT OF FENCE, BUILDING OR OTHER FUTURE IMPROVEMENT LINES.

NOTES:

- 1) BEARINGS FOR THIS MAP ARE ASSUMED AND BASED UPON GPS OBSERVATIONS MADE BETWEEN MONUMENTS LOCATED AT THE NORTHWEST CORNER AND WEST QUARTER CORNER OF SECTION 25, T.5N., R.63W.
- 2) HORIZONTAL DATUM IS NAD83.
- 3) VERTICAL DATUM IS NAVD88 AND ORIGINATES FROM THE LOCAL C.O.R.S. NETWORK, UTILIZING THE GEOID09 MODEL.
- 4) SEE LOCATION DRAWING FOR VISIBLE IMPROVEMENTS WITHIN 400' OF PROPOSED DISTURBED AREA.
- 5) SURFACE USE: PASTURE.

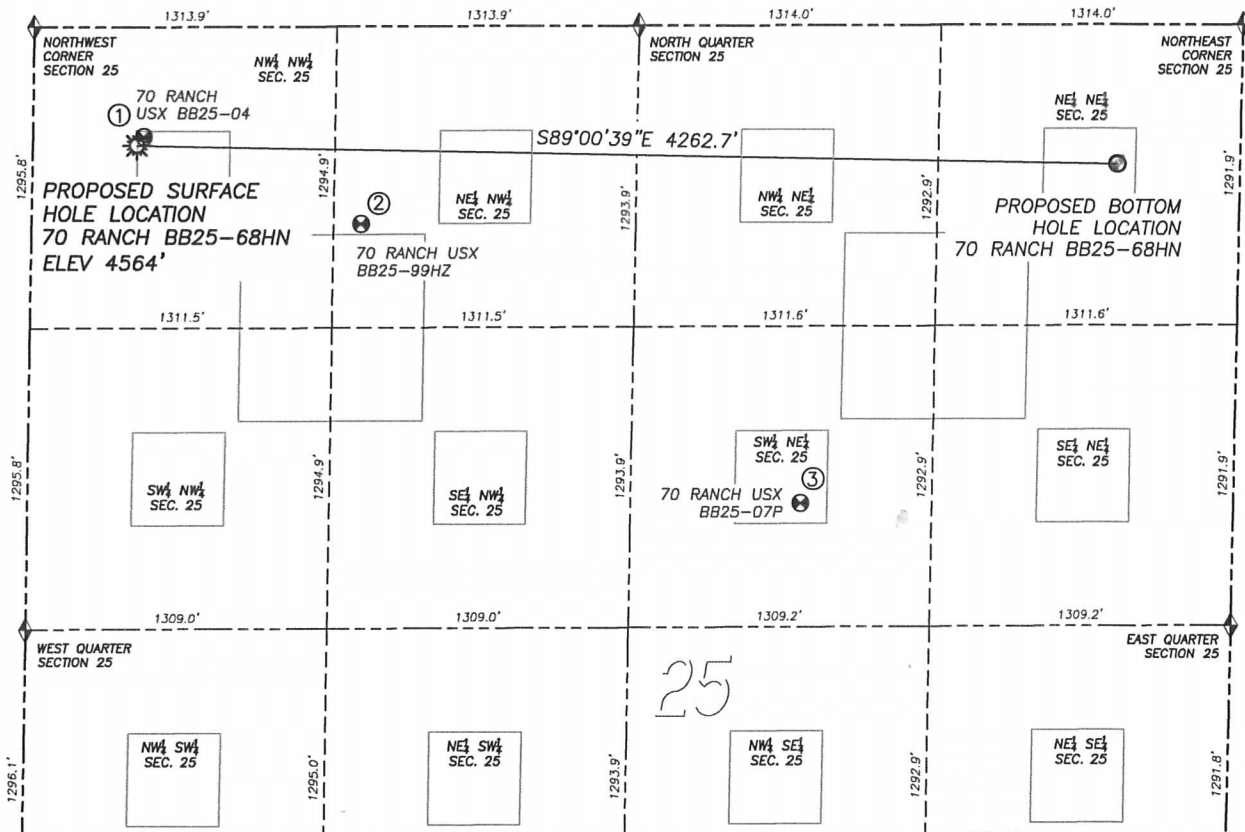
NOTICE: According to Colorado law you MUST commence any legal action based upon any defect in this W.L.C. within three years after you first discover such defect. In no event may any action based upon any such defect in this W.L.C. be commenced more than ten years from the date of the certification shown herein.



FOR AND ON BEHALF OF
DALEY LAND SURVEYING INC.
Robert Daley, PLS 35597

SITE SKETCH 70 RANCH BB25-68HN

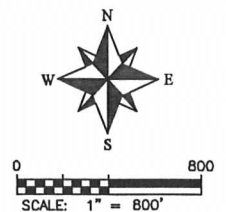
SECTION 25, TOWNSHIP 5 NORTH, RANGE 63 WEST OF THE 6TH PRINCIPAL MERIDIAN



①
70 RANCH
USX BB25-04
NW/NW SEC. 25
472' FNL, 481' FWL
LAT. N40.37611°
LONG. W104.39193°
EL: 4564'
PDOP 1.5

②
70 RANCH
USX BB25-99HZ
NE/NW SEC. 25
849' FNL, 1430' FWL
LAT. N40.37508°
LONG. W104.38854°
EL: 4562'
PDOP 1.7

③
70 RANCH
USX BB25-07P
SE/NE SEC. 25
2054' FNL, 1881' FEL
LAT. N40.37180°
LONG. W104.39169°
EL: 4584'
PDOP 1.8



LEGEND

- ◆ FOUND MONUMENT AS DESCRIBED
- ☀ PROPOSED WELL
- ⊙ EXISTING WELL
- BOTTOM HOLE
- ⊘ ABANDONED WELL

NOTES:

1. THIS DOES NOT REPRESENT A BOUNDARY SURVEY
2. HORIZONTAL DATUM IS NAD83
3. VERTICAL DATUM IS NAVD88 AND ORIGINATES FROM THE LOCAL C.O.R.S. NETWORK, UTILIZING THE GEOID09 MODEL.