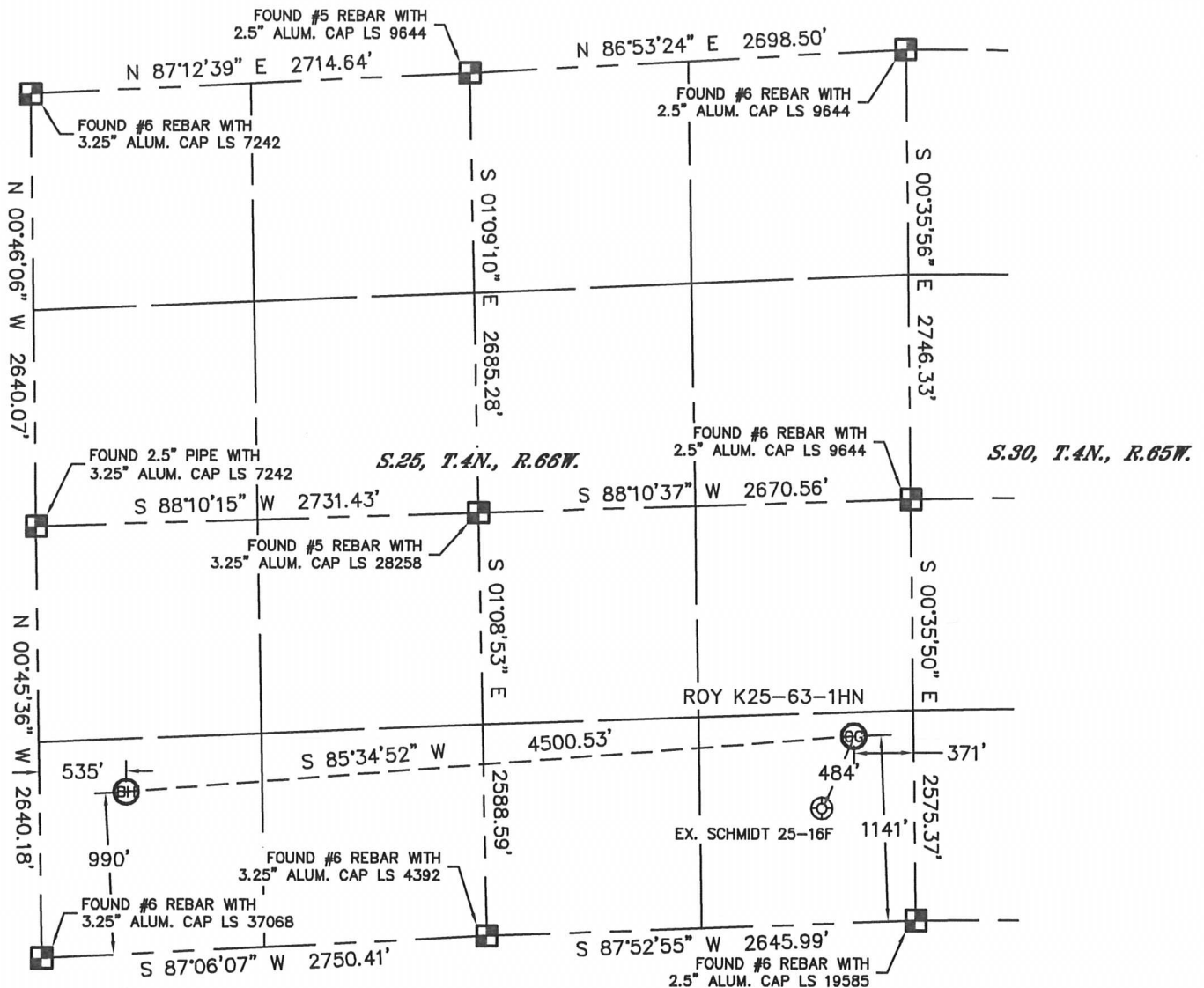


# WELL LOCATION CERTIFICATE

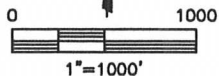
THIS MAP DOES NOT REPRESENT A BOUNDARY SURVEY

SECTION: 25  
TOWNSHIP: 4N  
RANGE: 66W



In accordance with a request from Jacob Rice with Noble Energy Inc. Lat40°, Inc. has determined the surface location of the ROY K25-63-1HN to be 1141' from the SOUTH line and 371' from the EAST line and the bottom hole to be 990' from the SOUTH line and 535' from the WEST line as measured at right angles from the section lines of Section 25, Township 4 North, Range 66 West of the Sixth Principal Meridian, County of Weld, State of Colorado.

I hereby state that this Well Location Certificate was prepared by me, or under my direct supervision, that the fieldwork was completed on 8/17/11, for and on behalf of Noble Energy Inc. That this is not a Land Survey Plat or an Improvement Survey Plat, and that it is not to be relied upon for establishment of fence, building, or other future Improvement lines.



## NOTE:

- 1) Bearings shown are Grid Bearings of the Colorado State Plane Coordinate System, North Zone, North American Datum 1983/2007. The lineal dimensions as contained herein are based upon the "U.S. Survey Foot."
- 2) Ground elevations are based on an observed GPS elevation (NAVD 1988 DATUM).
- 3) NEAREST EXISTING WELL (WITHIN SECTION): SCHMIDT 25-16F, 484'
- 4) IMPROVEMENTS: See LOCATION DRAWING for all visible Improvements within 400' of disturbed area.
- 5) SURFACE USE: PASTURE
- 6) INSTRUMENT OPERATOR: BRIAN BRINKMAN

## NOTE

According to Colorado law, you must commence any legal action based upon any defect in this W.L.C. within three years after you discover such defect. In no event, may any action based upon any defect in this survey be commenced more than ten years after the date of the certificate shown hereon. (13-80-105 C.R.S.)

## LEGEND

- = ALIQUOT MONUMENT AS DESCRIBED
- = CALCULATED POSITION

SURFACE LOCATION  
LATITUDE: 40.27932°N  
LONGITUDE: 104.71685°W  
PDOP: 1.3  
ELEV: 4803'  
1/4, 1/4: SE1/4SE1/4  
NEAREST PROPERTY LINE: 361' SE

BOTTOM HOLE  
LATITUDE: 40.27848°N  
LONGITUDE: 104.73294°W



Brian T. Brinkman—On behalf of Lat40°, Inc.  
Colorado Licensed Professional  
Land Surveyor No. 38175 PROJECT#: 2011075

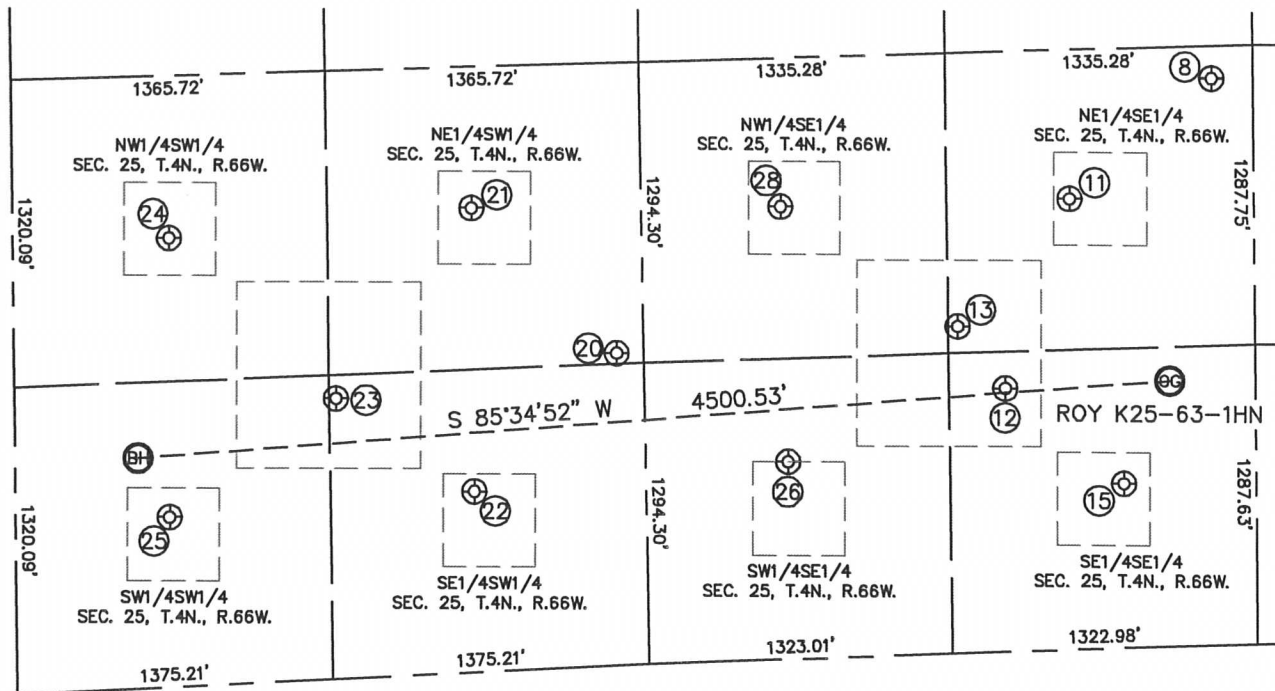
Lat40°, Inc.

1635 Foxtrail Drive, Suite 325

Loveland, CO 80538

## SITE SKETCH

ROY K25-63-1HN

SECTION: 25  
TOWNSHIP: 4N  
RANGE: 66W

⑧

SCHMIDT G30-32  
NE1/4SE1/4  
2435' FSL  
179' FEL  
LAT-40.28289°N  
LONG-104.71617°W  
PDOP: 1.3  
ELEV: 4791'

⑪

SCHMIDT 25-9F  
NE1/4SE1/4  
1936' FSL  
797' FEL  
LAT-40.28147°N  
LONG-104.71838°W  
PDOP: 1.6  
ELEV: 4793'

⑫

ROY A SCHMIDT UNIT 1  
SE1/4SE1/4  
1131' FSL  
1082' FEL  
LAT-40.27924°N  
LONG-104.71940°W  
PDOP: 1.2  
ELEV: 4793'

⑬

SCHMIDT 25-2316  
NE1/4SE1/4  
1405' FSL  
1288' FEL  
LAT-40.27997°N  
LONG-104.72013°W  
PDOP: 2.0  
ELEV: 4790'

⑮

SCHMIDT 25-16F  
SE1/4SE1/4  
706' FSL  
347' FEL  
LAT-40.27811°N  
LONG-104.71757°W  
PDOP: 1.8  
ELEV: 4800'

⑳

SANDAU K25-24  
NE1/4SW1/4  
1341' FSL  
2621' FWL  
LAT-40.27968°N  
LONG-104.72547°W  
PDOP: 2.2  
ELEV: 4795'

㉑

SANDAU & BARTELS  
25-11F  
NE1/4SW1/4  
1994' FSL  
1996' FWL  
LAT-40.28140°N  
LONG-104.72772°W  
PDOP: 1.7  
ELEV: 4787'

㉒

SANDAU & BARTELS  
25-14F  
SE1/4SW1/4  
777' FSL  
1996' FWL  
LAT-40.27806°N  
LONG-104.72770°W  
PDOP: 4.2  
ELEV: 4801'

㉓

L H MILLER UNIT 2  
SE1/4SW1/4  
1205' FSL  
1399' FWL  
LAT-40.27917°N  
LONG-104.72984°W  
PDOP: 2.8  
ELEV: 4796'

㉔

SANDAU & BARTELS  
25-12F  
NW1/4SW1/4  
1928' FSL  
679' FWL  
LAT-40.28107°N  
LONG-104.73243°W  
PDOP: 1.8  
ELEV: 4784'

㉕

SANDAU & BARTELS  
25-13F  
SW1/4SW1/4  
730' FSL  
670' FWL  
LAT-40.27778°N  
LONG-104.73245°W  
PDOP: 2.4  
ELEV: 4795'

㉖

SCHMIDT 25-15F  
SW1/4SE1/4  
849' FSL  
1803' FEL  
LAT-40.27839°N  
LONG-104.72280°W  
PDOP: 2.2  
ELEV: 4799'

㉗

SCHMIDT 25-10F  
NW1/4SE1/4  
1945' FSL  
2057' FEL  
LAT-40.28140°N  
LONG-104.72289°W  
PDOP: 1.5  
ELEV: 4785'

