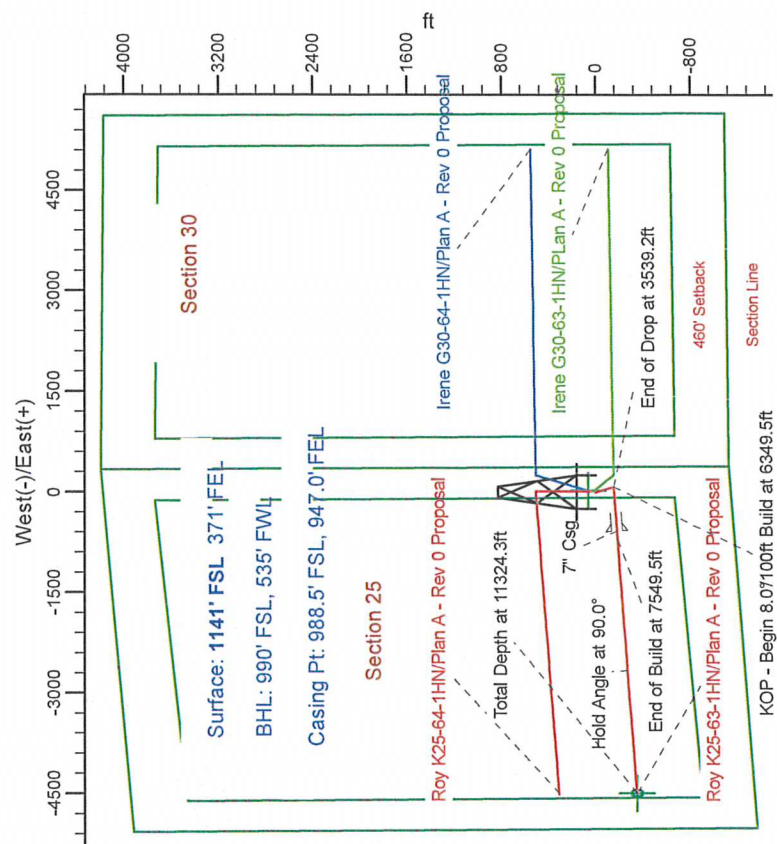
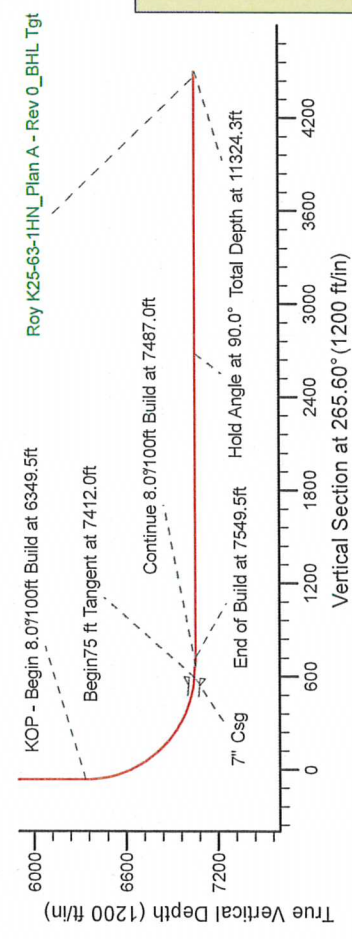
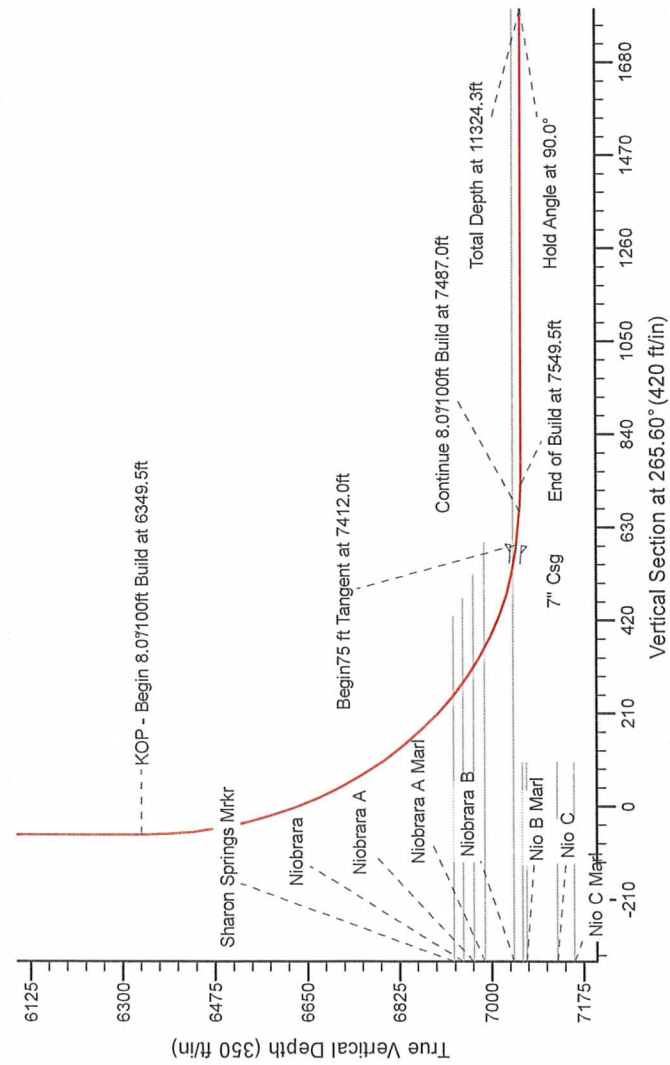


Project: Weld County Colorado (NAD 83)
Site: Sec. 25, T4N, R66W
Well: Roy K25-63-1HN
Wellbore: Plan A - Rev 0 (PERMITTING PLAN ONLY)
Design: Plan A - Rev 0 Proposal

SECTION DETAILS

Sec	MD	Inc	Azi	TVD	+N/-S	+E/-W	Dleg	TFace	Vsect	Target
1	0.0	0.00	0.00	0.0	0.0	0.0	0.00	0.00	0.0	0.0
2	2250.0	0.00	0.00	2250.0	0.0	0.0	0.00	0.00	0.0	0.0
3	2729.9	12.00	153.59	2726.4	-44.8	22.3	2.50	153.59	-18.8	-18.8
4	3059.2	12.00	153.59	3048.6	-106.2	52.7	0.00	0.00	-44.4	-44.4
5	3539.2	0.00	0.00	3525.0	-151.0	75.0	2.50	180.00	-63.2	-63.2
6	6349.5	0.00	0.00	6335.3	-151.0	75.0	0.00	0.00	-63.2	-63.2
7	7412.0	85.00	267.56	7048.8	-178.8	-578.2	8.00	267.56	590.2	590.2
8	7487.0	85.00	267.56	7055.3	-182.0	-652.8	0.00	0.00	664.9	664.9
9	7549.5	90.00	267.56	7058.0	-184.7	-715.2	8.00	0.00	727.3	727.3
10	11324.3	90.00	267.56	7058.0	-345.2	-4486.6	0.00	74.53	4499.9	4499.9

Roy K25-63-1HN_Plan A - Rev 0_BHL Tgt-



WELL DETAILS: Roy K25-63-1HN (NAD 83 Geodetic System)			
Northing	410128.26	Ground Level	4803.0
Easting	981001.01	Latitude	40° 16' 45.552 N
		Longitude	104° 43' 0.660 W
Plan: Plan A - Rev 0 Proposal (Roy K25-63-1HN/Plan A - Rev 0 (PERMITTING PLAN ONLY))			
Created By: Erasmo Mendoza		Date: 19:16, October 19 2011	

T G M

Magnetic Model: KRF200510
Date: 10/19/2011
Declination: 8.23°
Dip Angle: 60.96°
Field Strength: 53060.0

Grid North is 0.51' East of True North (Grid Corner given)
Magnetic North is 8.23' East of True North (Magnetic Declination)
To convert a True Direction to a Grid Direction, Subtract 8.23° from
To convert a Magnetic Direction to a Grid Direction, Add 8.23°