

1625 Broadway
Suite 2000
Denver, CO 80202

Tel: 303.228.4000
Fax: 303.228.4280
www.nobleenergyinc.com



November 17, 2011

Colorado Oil and Gas Conservation Commission
The Chancery Building
1120 Lincoln Street, Suite 801
Denver, CO 80203

Attn: Mr. David Neslin, Director

RE: ROY K25-64-1HN
Niobrara New Drill
Township 4 North, Range 65 West, 6th P.M.
Section 25: SE/4SE/4: 1184' FSL & 357' FEL (Surface Location)
Section 25: NW/4SE/4: 1651' FSL & 1004' FEL (Beginning of Lateral)
Section 25: NW/4SW/4: 1650' FSL & 535' FWL (Bottom Hole Location)
Weld County, Colorado

Mr. Neslin:

Noble Energy, Inc. ("NEI") is planning to drill the captioned boundary well in accordance with the provisions of COGCC Rule 318A.e.

NEI's proposed wellbore spacing unit consists of the S/2 Section 25, T4N, R65W, creating a 320-acre wellbore spacing unit for the Niobrara formation. NEI is the only owner within the proposed wellbore spacing unit, therefore NEI hereby attests that no notice letters are required under COGCC Rule 318A(l).e.(6).

Enclosed are copies of the following documents to assist you in your review and approval of NEI's proposed APD for the captioned well:

- Map & plat illustrating proposed wellbore spacing unit.

Thank you for your attention to the enclosed. NEI respectfully requests that the COGCC review the enclosed information and approve the Application for Permit to Drill the captioned well.

Sincerely,

A handwritten signature in blue ink that reads 'Mari Clark'.

Mari Clark
Regulatory Analyst II
Noble Energy Inc.

ROY K25-64-1HN

Noble Energy, Inc

S/2 Section 25, Township 4 North, Range 66 West



Legend

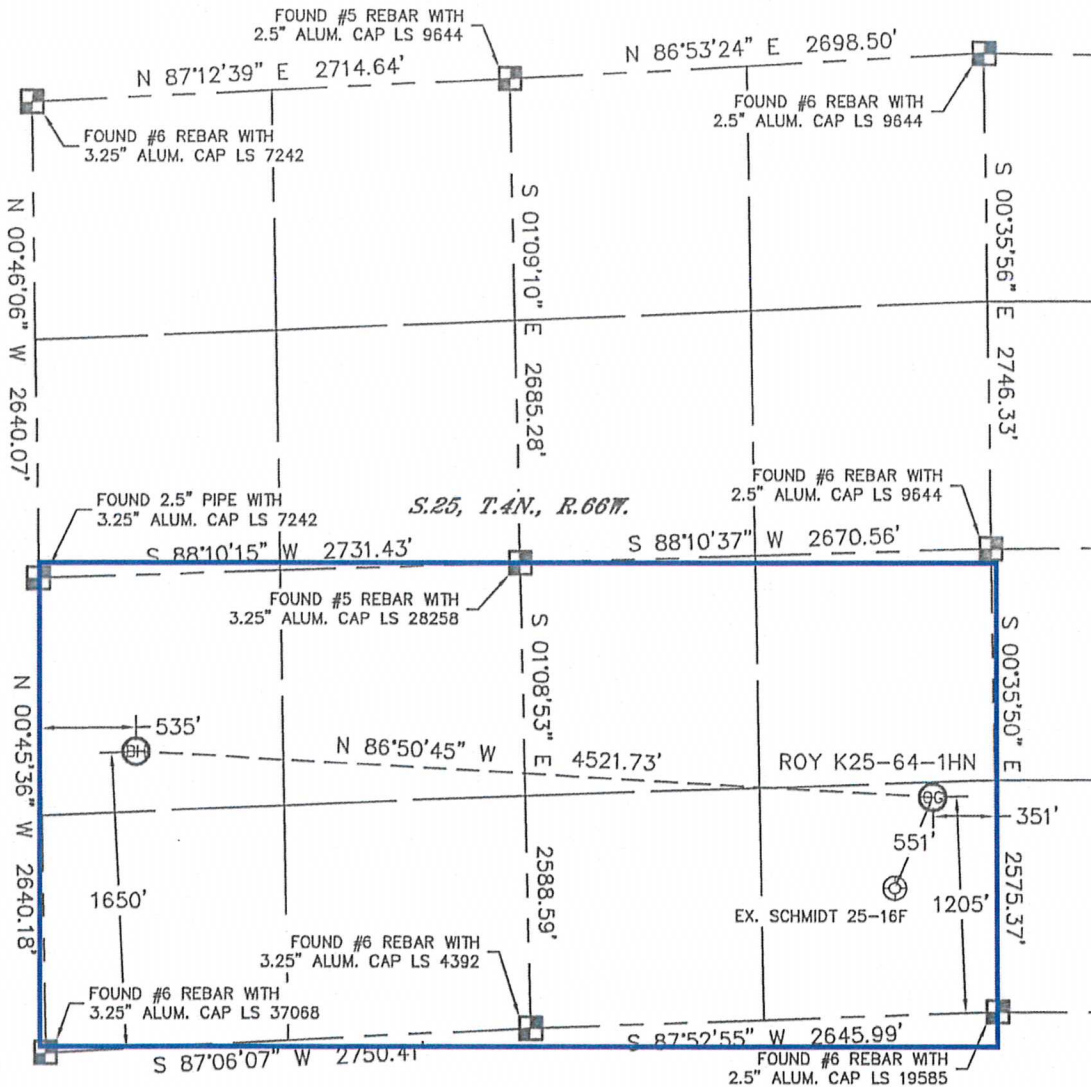
Proposed 320 acre spacing unit

Bottom Hole Location

WELL LOCATION CERTIFICATE

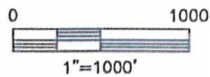
THIS MAP DOES NOT REPRESENT A BOUNDARY SURVEY

SECTION: 25
TOWNSHIP: 4N
RANGE: 66W



In accordance with a request from Jacob Rice with Noble Energy Inc. Lat40°, Inc. has determined the surface location of the ROY K25-64-1HN to be 1205' from the SOUTH line and 351' from the EAST line and the bottom hole to be 1650' from the SOUTH line and 535' from the WEST line as measured at right angles from the section lines of Section 25, Township 4 North, Range 66 West of the Sixth Principal Meridian, County of Weld, State of Colorado.

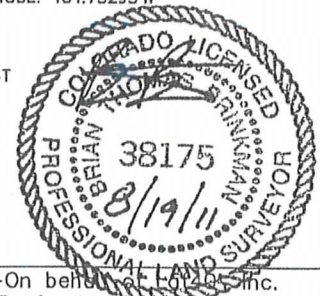
I hereby state that this Well Location Certificate was prepared by me, or under my direct supervision, that the fieldwork was completed on 8/17/11, for and on behalf of Noble Energy Inc. That this is not a Land Survey Plat or an Improvement Survey Plat, and that it is not to be relied upon for establishment of fence, building, or other future improvement lines.



NOTE:

- 1) Bearings shown are Grid Bearings of the Colorado State Plane Coordinate System, North Zone, North American Datum 1983/2007. The lineal dimensions as contained herein are based upon the "U.S. Survey Foot."
- 2) Ground elevations are based on an observed GPS elevation (NAVD 1988 DATUM).
- 3) NEAREST EXISTING WELL (WITHIN SECTION): SCHMIDT 25-16F, 551'
- 4) IMPROVEMENTS: See LOCATION DRAWING for all visible Improvements within 400' of disturbed area.
- 5) SURFACE USE: PASTURE
- 6) INSTRUMENT OPERATOR: BRIAN BRINKMAN

SURFACE LOCATION	BOTTOM HOLE
LATITUDE: 40.27950°N	LATITUDE: 40.28029°N
LONGITUDE: 104.71678°W	LONGITUDE: 104.73295°W
PDOP: 1.5	
ELEV: 4801'	
1/4,1/4: SE1/4SE1/4	
NEAREST PROPERTY LINE: 351' EAST	



NOTE

According to Colorado law, you must commence any legal action based upon any defect in this W.L.C. within three years after you discover such defect. In no event, may any action based upon any defect in this survey be commenced more than ten years after the date of the certificate shown hereon. (13-80-105 C.R.S.)

LEGEND

- = ALIQUOT MONUMENT AS DESCRIBED
- = CALCULATED POSITION

Brian T. Brinkman—On behalf of
Colorado Licensed Professional
Land Surveyor No. 38175 PROJECT#: 2011075