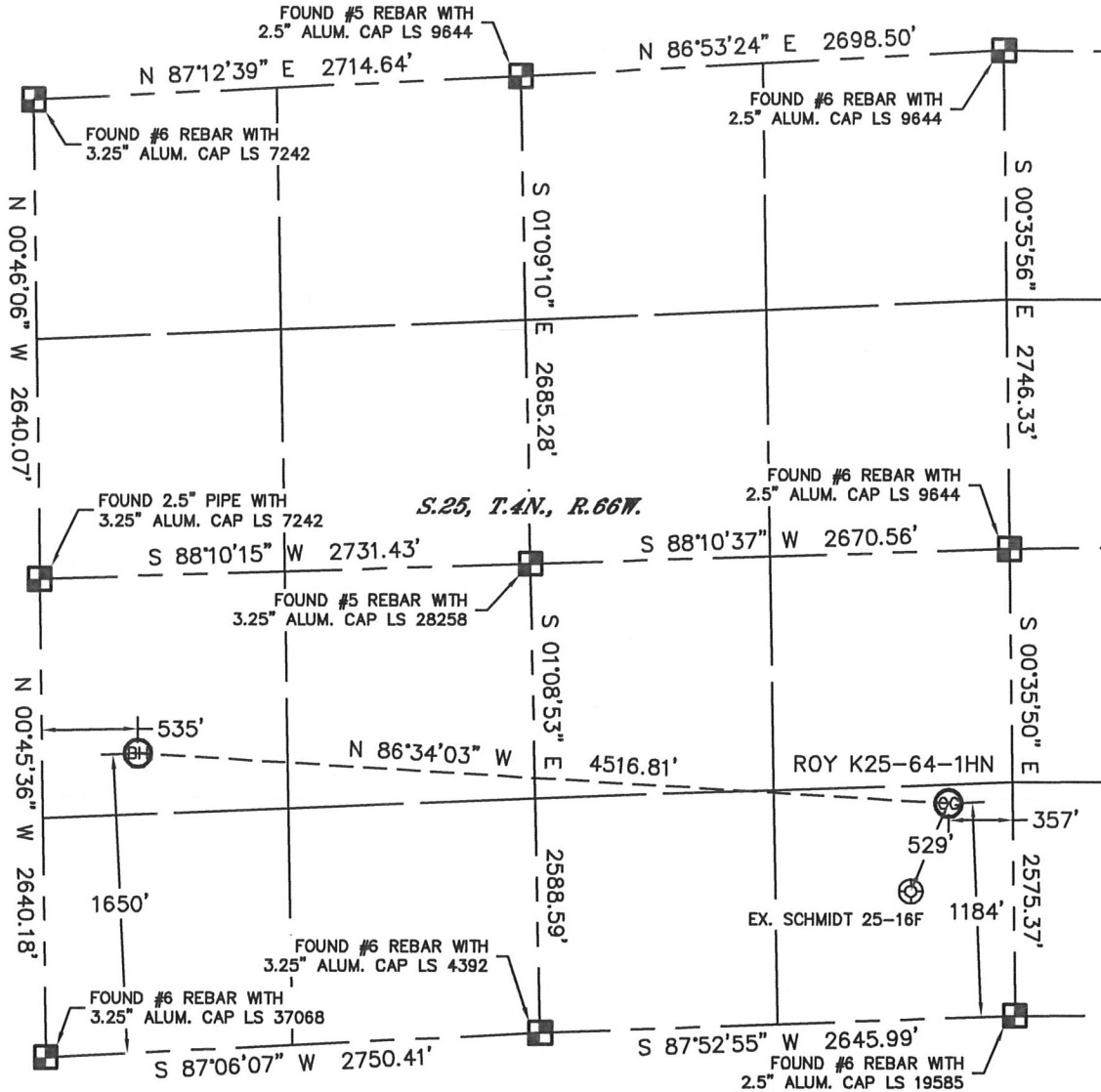


WELL LOCATION CERTIFICATE

THIS MAP DOES NOT REPRESENT A BOUNDARY SURVEY

SECTION: 25
TOWNSHIP: 4N
RANGE: 66W



In accordance with a request from Jacob Rice with Noble Energy Inc. Lat40°, Inc. has determined the surface location of the ROY K25-64-1HN to be 1184' from the SOUTH line and 357' from the EAST line and the bottom hole to be 1650' from the SOUTH line and 535' from the WEST line as measured at right angles from the section lines of Section 25, Township 4 North, Range 66 West of the Sixth Principal Meridian, County of Weld, State of Colorado.

I hereby state that this Well Location Certificate was prepared by me, or under my direct supervision, that the fieldwork was completed on 8/17/11, for and on behalf of Noble Energy Inc. That this is not a Land Survey Plat or an Improvement Survey Plat, and that it is not to be relied upon for establishment of fence, building, or other future improvement lines.

- NOTE:**
- 1) Bearings shown are Grid Bearings of the Colorado State Plane Coordinate System, North Zone, North American Datum 1983/2007. The lineal dimensions as contained herein are based upon the "U.S. Survey Foot."
 - 2) Ground elevations are based on an observed GPS elevation (NAVD 1988 DATUM).
 - 3) NEAREST EXISTING WELL (WITHIN SECTION): SCHMIDT 25-16F, 529'
 - 4) IMPROVEMENTS: See LOCATION DRAWING for all visible improvements within 400' of disturbed area.
 - 5) SURFACE USE: PASTURE
 - 6) INSTRUMENT OPERATOR: BRIAN BRINKMAN



SURFACE LOCATION
 LATITUDE: 40.27944°N
 LONGITUDE: 104.71680°W
 PDOP: 1.4
 ELEV: 4802'
 1/4, 1/4: SE1/4SE1/4
 NEAREST PROPERTY LINE: 357' EAST

BOTTOM HOLE
 LATITUDE: 40.28029°N
 LONGITUDE: 104.73295°W



NOTE
 According to Colorado law, you must commence any legal action based upon any defect in this W.L.C. within three years after you discover such defect. In no event, may any action based upon any defect in this survey be commenced more than ten years after the date of the certificate shown hereon. (13-80-105 C.R.S.)

LEGEND

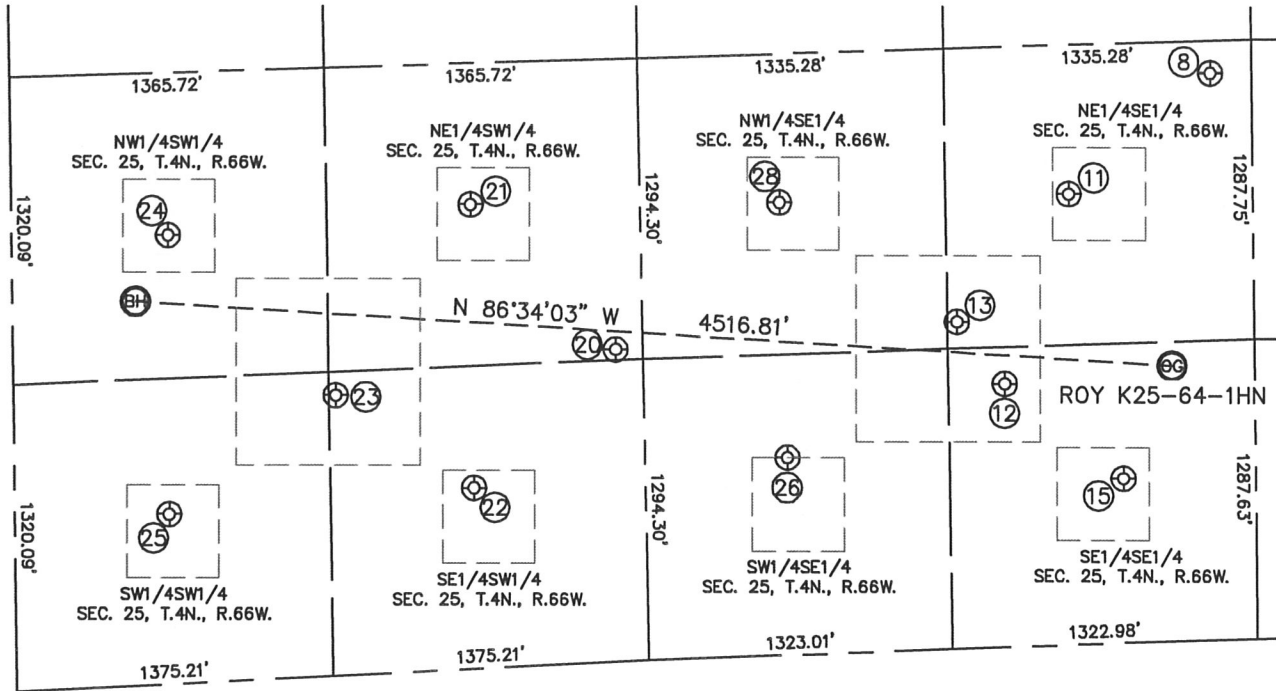
-  = ALIQUOT MONUMENT AS DESCRIBED
-  = CALCULATED POSITION

Brian T. Brinkman—On behalf of Lat40°, Inc.
 Colorado Licensed Professional Land Surveyor No. 38175
 PROJECT#: 2011075

SITE SKETCH

ROY K25-64-1HN

SECTION: 25
TOWNSHIP: 4N
RANGE: 66W



⑧

SCHMIDT G30-32
NE1/4SE1/4
2435' FSL
179' FEL
LAT-40.28289°N
LONG-104.71617°W
PDOP: 1.3
ELEV: 4791'

⑪

SCHMIDT 25-9F
NE1/4SE1/4
1936' FSL
797' FEL
LAT-40.28147°N
LONG-104.71838°W
PDOP: 1.6
ELEV: 4793'

⑫

ROY A SCHMIDT UNIT 1
SE1/4SE1/4
1131' FSL
1082' FEL
LAT-40.27924°N
LONG-104.71940°W
PDOP: 1.2
ELEV: 4793'

⑬

SCHMIDT 25-2316
NE1/4SE1/4
1405' FSL
1288' FEL
LAT-40.27997°N
LONG-104.72013°W
PDOP: 2.0
ELEV: 4790'

⑮

SCHMIDT 25-16F
SE1/4SE1/4
706' FSL
347' FEL
LAT-40.27811°N
LONG-104.71757°W
PDOP: 1.8
ELEV: 4800'

⑳

SANDAU K25-24
NE1/4SW1/4
1341' FSL
2621' FWL
LAT-40.27968°N
LONG-104.72547°W
PDOP: 2.2
ELEV: 4795'

㉑

SANDAU & BARTELS
25-11F
NE1/4SW1/4
1994' FSL
1996' FWL
LAT-40.28140°N
LONG-104.72772°W
PDOP: 1.7
ELEV: 4787'

㉒

SANDAU & BARTELS
25-14F
SE1/4SW1/4
777' FSL
1996' FWL
LAT-40.27806°N
LONG-104.72770°W
PDOP: 4.2
ELEV: 4801'

㉓

L H MILLER UNIT 2
SE1/4SW1/4
1205' FSL
1399' FWL
LAT-40.27917°N
LONG-104.72984°W
PDOP: 2.8
ELEV: 4796'

㉔

SANDAU & BARTELS
25-12F
NW1/4SW1/4
1928' FSL
679' FWL
LAT-40.28107°N
LONG-104.73243°W
PDOP: 1.8
ELEV: 4784'

㉕

SANDAU & BARTELS
25-13F
SW1/4SW1/4
730' FSL
670' FWL
LAT-40.27778°N
LONG-104.73245°W
PDOP: 2.4
ELEV: 4795'

㉖

SCHMIDT 25-15F
SW1/4SE1/4
849' FSL
1803' FEL
LAT-40.27839°N
LONG-104.72280°W
PDOP: 2.2
ELEV: 4799'

㉘

SCHMIDT 25-10F
NW1/4SE1/4
1945' FSL
2057' FEL
LAT-40.28140°N
LONG-104.72289°W
PDOP: 1.5
ELEV: 4785'

